

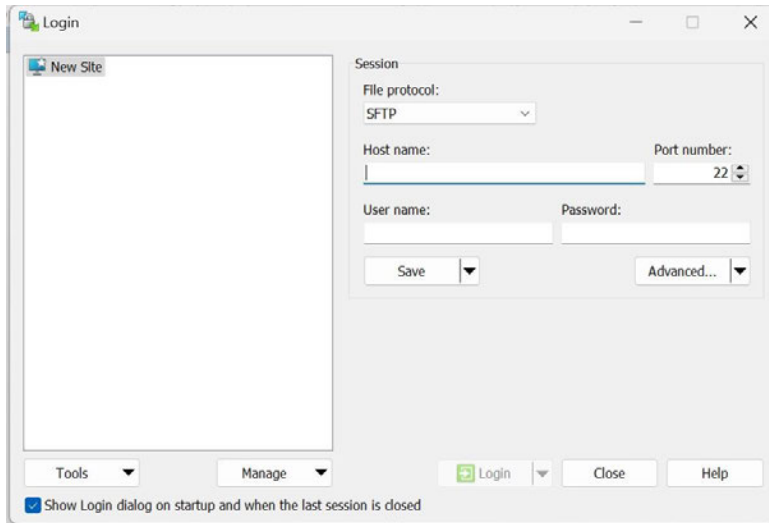
WINSCP

How to use WINSCP with these instructions:

ssh vattobs@vatt.as.arizona.edu -p 42122

sftp -P 42122 vattobs@vatt.as.arizona.edu

1) Launch WINSCP

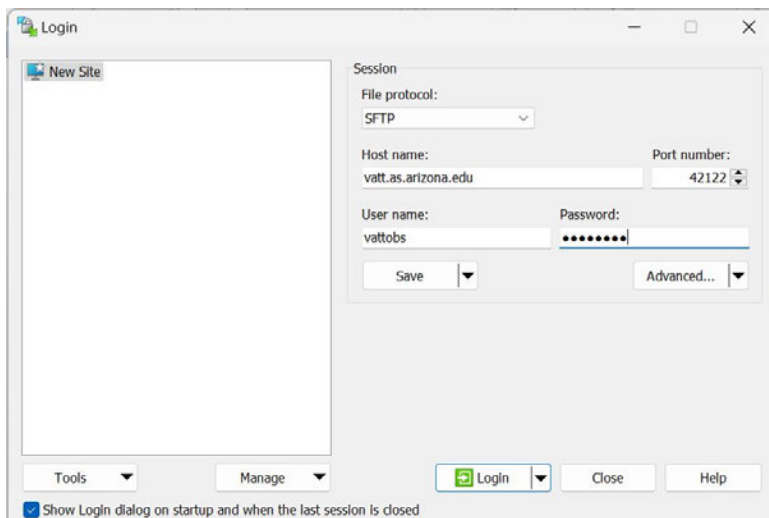


2) Insert Host: vat.arizona.edu,

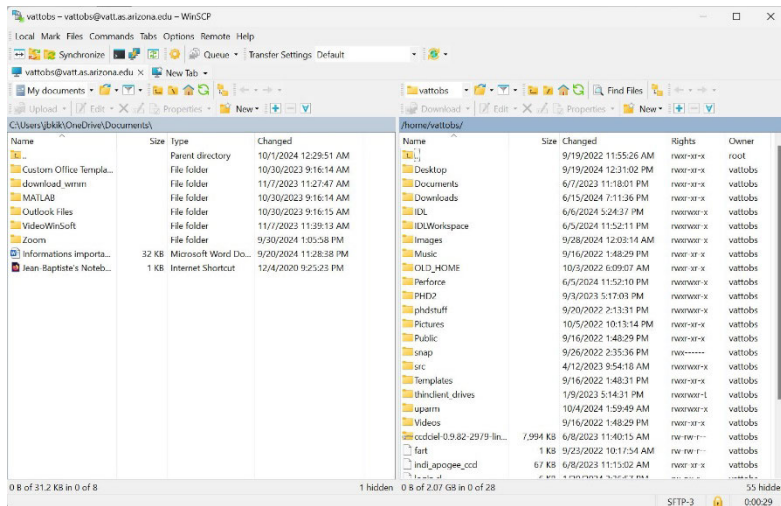
Specify port: 42122,

Username: vattobs

Password: [REDACTED]



3) Here is the result:



4) My directory is under Images (click Images to see my directory)

