

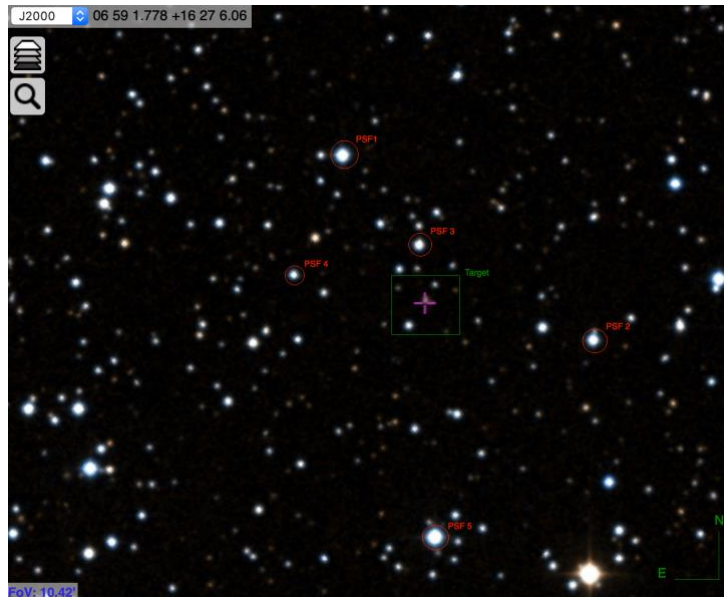
COSMOGRAIL checklist

Here is a summary of the task you will need to perform daily but please also read the rest of the instructions on cosmograil.epfl.ch :

- Take 4 exposures of 360 seconds in **R filter** every night. The coordinates where to point the telescope are :

(RA 06:59:04.07, DEC:+16:31:09.2)

The target should be on the detector corresponding to the second extension of the fit files (i.e. <image>.fits[2], which corresponds to the lower part of the detector when North is up and East is left).



- Please take **5 bias exposures** and **5 (dome) flats exposures in R filter** with 1:1 binning every day, even if you cannot observe.
- Make sure that the telescope is **in focus**.
- Make sure that all science and calibration frames are saved to the COSMOGRAIL directory:
`/mnt/TBArray/images/cosmograil/`

The fits files are automatically sorted by date every morning.

- Fill the [night report](#) online every day, even if you did not observe.

Observational Requirements:

We do not require to observe during dark time or in particularly good seeing conditions but please make sure that your observations match the following requirements:

- Daily observations (24 min exposure + overheads)
- Seeing <1.8"
- Airmass < 1.5. Please check the [visibility plots](#) online.
- No moon separation requirements.

Contact : Any questions or comments, please contact us:

Martin Millon : martin.millon@epfl.ch, Aymeric Galan : aymeric.galan@epfl.ch