

BOLTWOOD  
CLOUD  
SENSOR

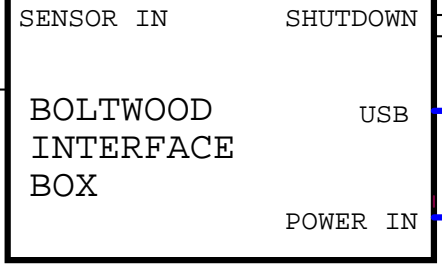
5-PIN  
RECTANGULAR CONNECTOR

LIGHTNING ARRESTOR



9-PIN  
RS-232  
MALE ON CABLE

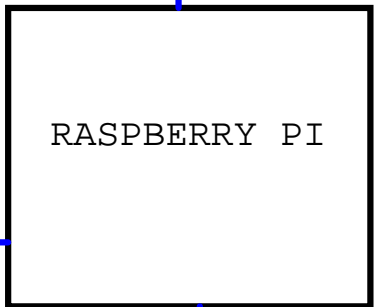
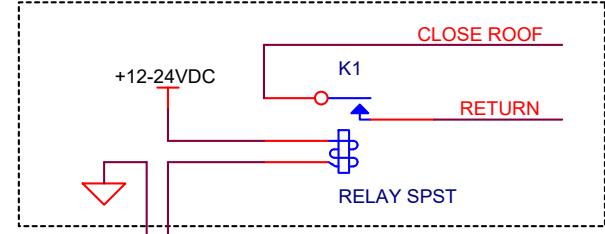
XMIT  
RECV  
RET  
+12V n/c



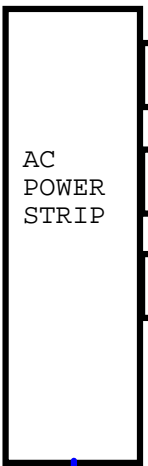
EMERGENCY SHUTDOWN SIGNAL  
to SHUTTER CONTROL  
3.5mm AUDIO JACK  
0-27 V SUPPLIED EXTERNALLY  
150mA MAX  
SEE PAGE 57 of the CLOUD  
SENSOR II USER'S MANUAL

USB CABLE to RPI

ROOF-CLOSE CIRCUIT



RASPBERRY PI



+24VDC  
BRICK

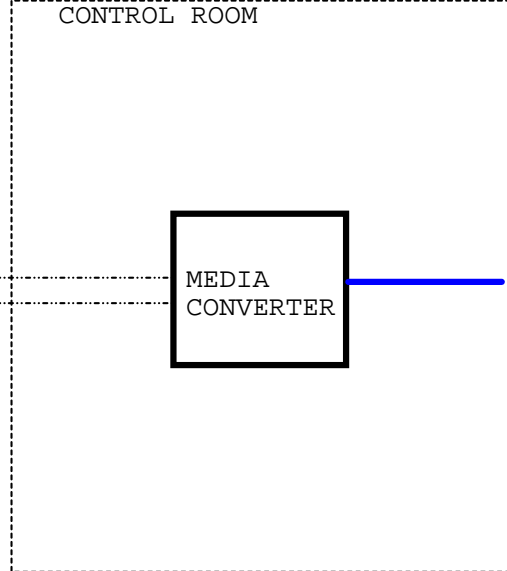
+5VDC  
BRICK

BRICK

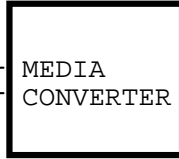
ETHERNET



MEDIA  
CONVERTER

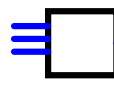


CONTROL ROOM



MEDIA  
CONVERTER

BUILDING AC (NOT UPS)



INSTALLED AT THE SUPERLOTIS TELESCOPE

Title		
<b>BOLTWOOD CLOUD SENSOR</b>		
Size B	Document Number <Doc>	Rev B
Date:	Thursday, May 25, 2017	Sheet 1 of 1

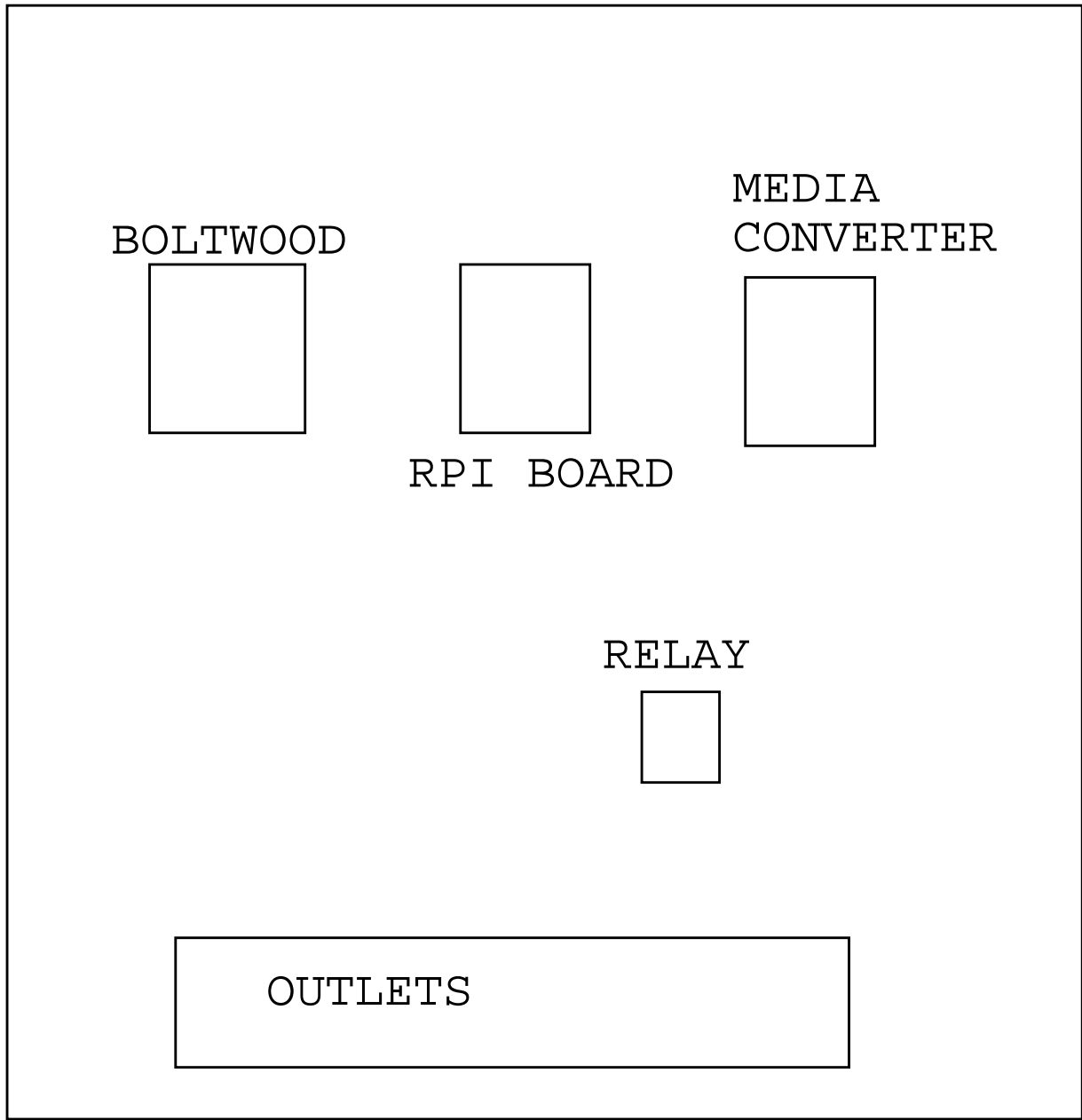


PLATE 10.75" X 10.75"

ENCLOSURE ALLIED MOULDED PRODUCTS AM1224H

Title		
SUPERLOTIS BOLTWOOD ENCLOSURE		
Size A	Document Number <Doc>	Rev A
Date:	Thursday, May 25, 2017	Sheet 1 of 1