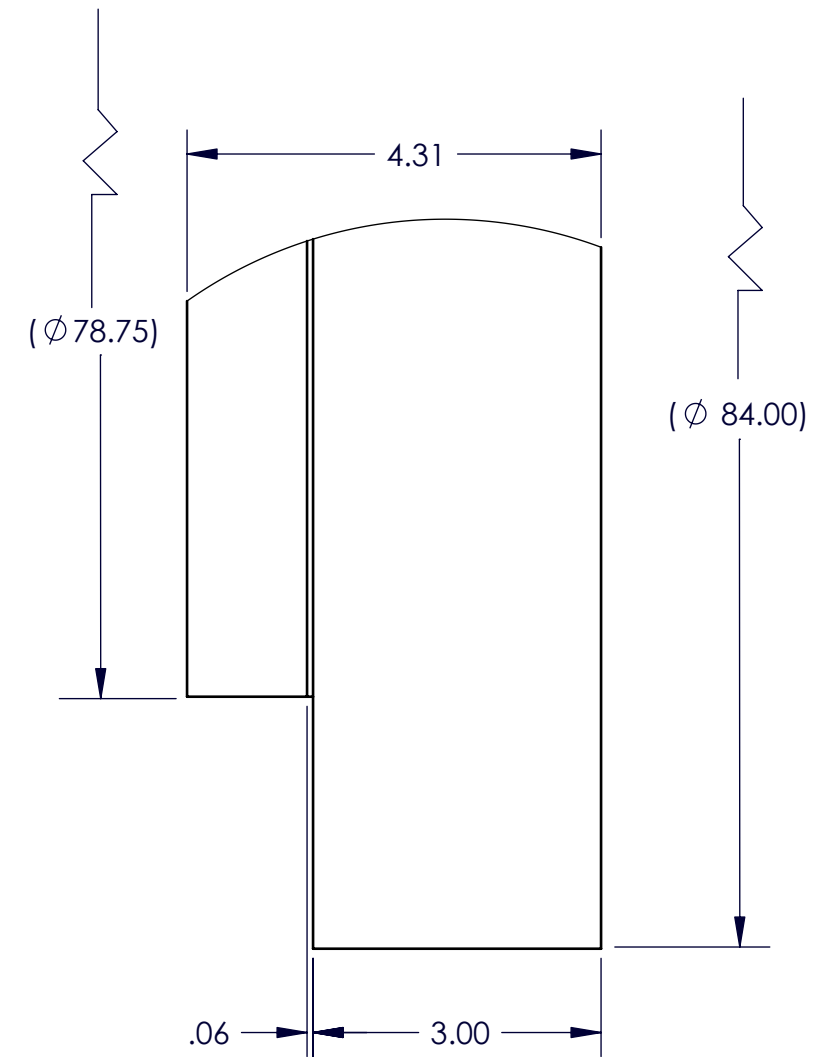
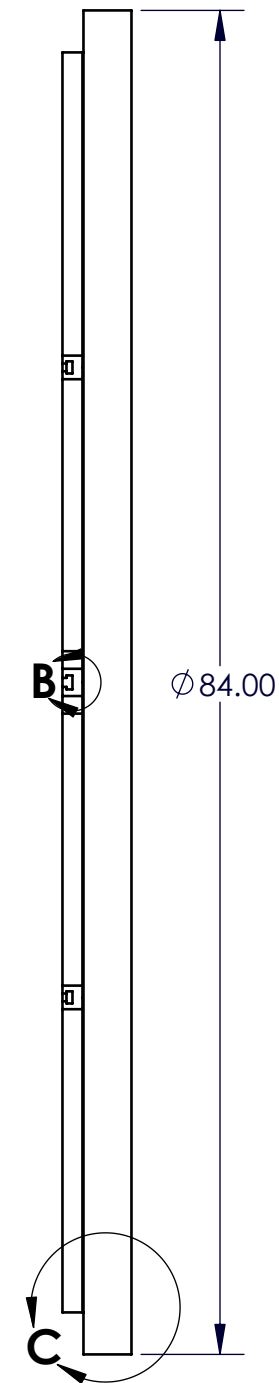
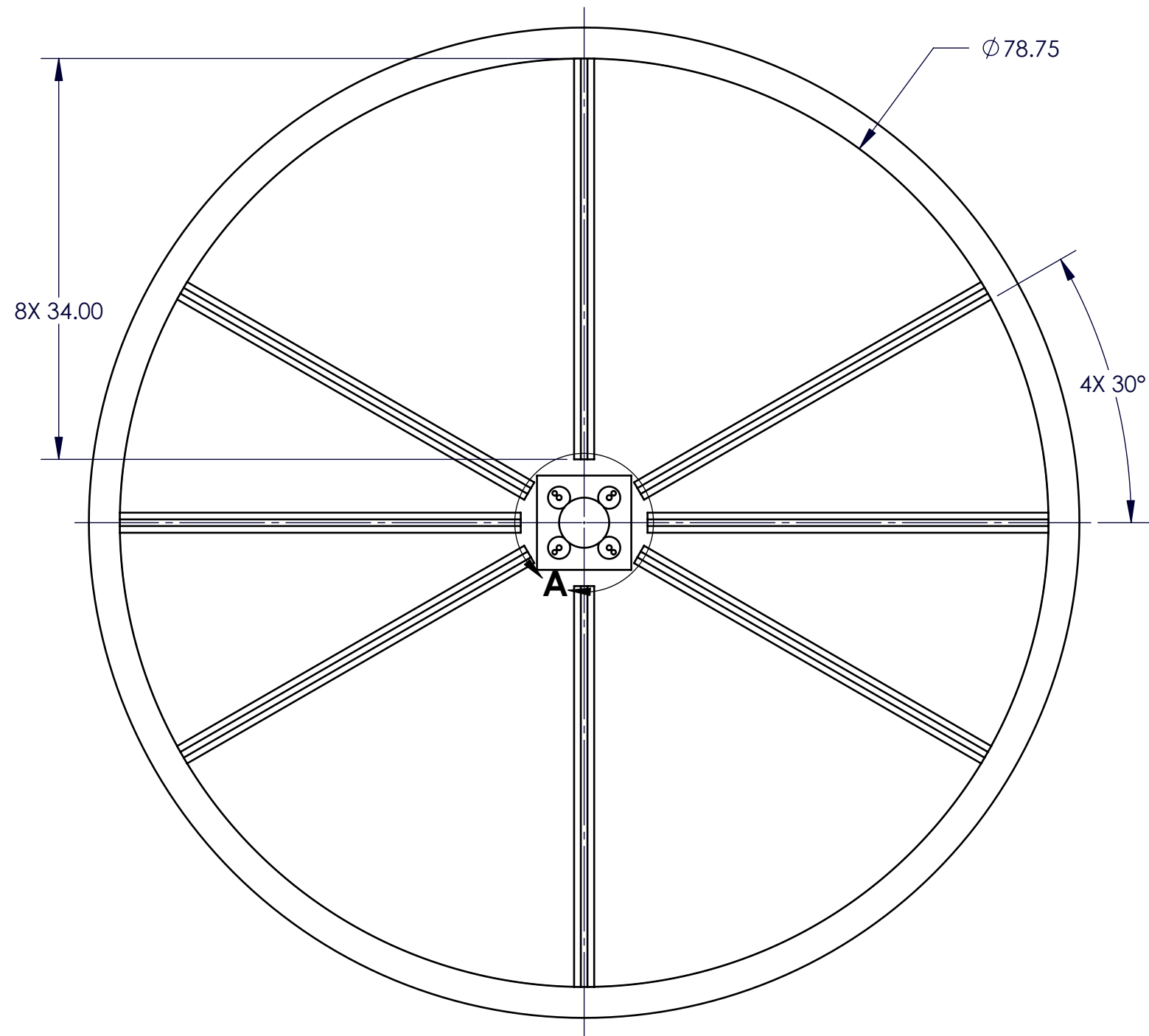


REVISION HISTORY				
REV.	DESCRIPTION	DATE	REVISED BY	APPROVED
1	INITIAL RELEASE	11-14-2007	S.BAUMAN	C.SAUVE

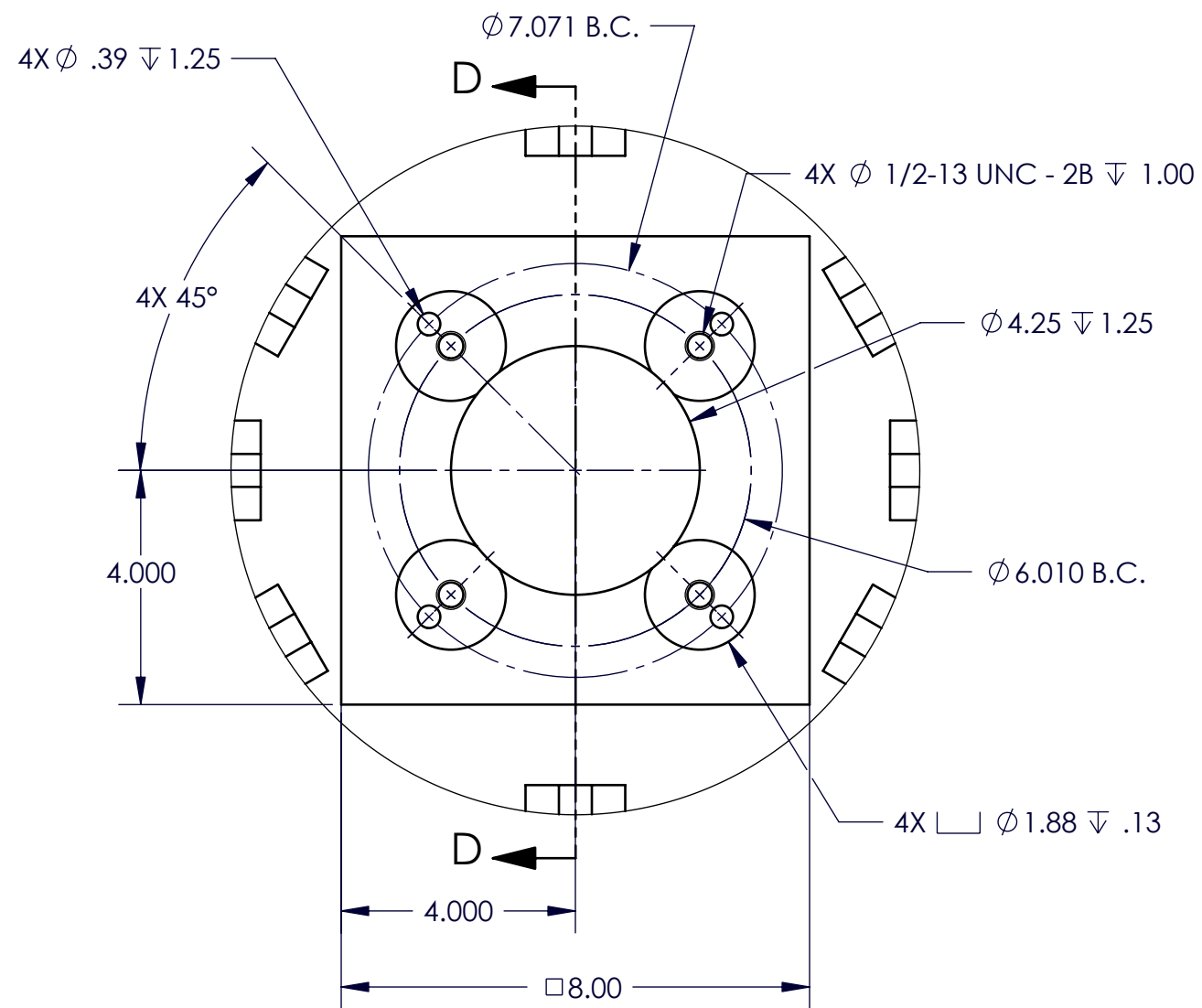


DETAIL C
SCALE 1 : 2

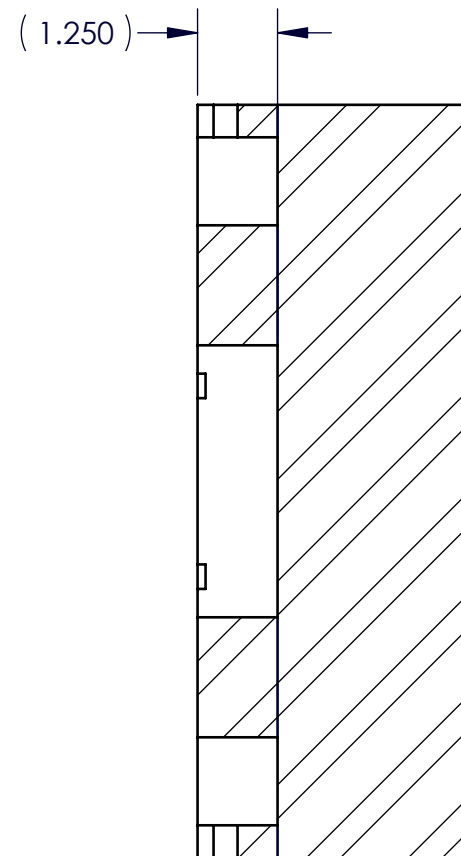
NOTE:

1. BREAK SHARP EDGES & DEBURR.
2. ALL MACHINING FILLETS TO BE R.015 MAX.
3. ALL MACHINED SURFACES TO BE 125 RMS OR BETTER.

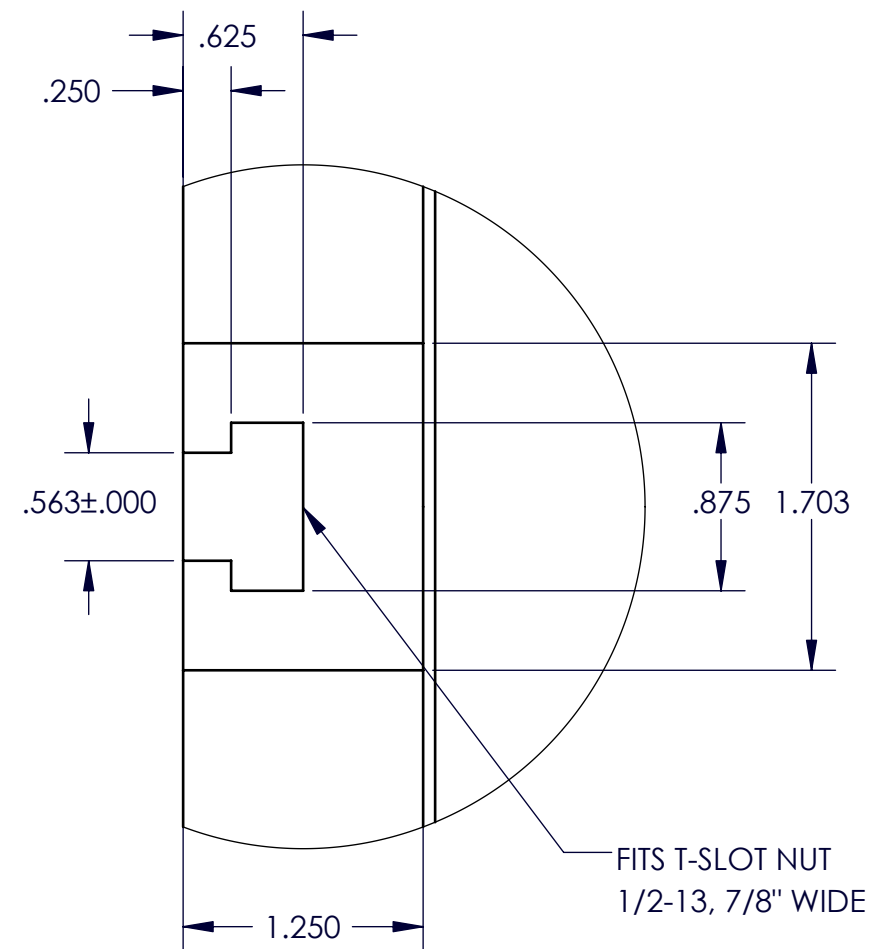
DO NOT SCALE DRAWING INTERPRET DIMENSIONS & TOLERANCES IN ACCORDANCE WITH ASME Y14-5M-94 TOLERANCES UNLESS OTHERWISE SPECIFIED LINEAR .X = .1 .XX = .01 .XXX = .005 <small>DIAMETRICAL SEE SPEC 4-002</small> MATERIAL: ASTM A-36 FINISH none	THIS DRAWING CREATED IN: <input type="checkbox"/> ACAD <input type="checkbox"/> MECH <input type="checkbox"/> IDEAS <input type="checkbox"/> INV <input checked="" type="checkbox"/> S-W		Steward Observatory, University of Arizona 933 N. Cherry Avenue, Tucson, AZ 85721 (520) 621-7659	
	ENGINEER: S.BAUMAN DESIGNED BY: S.BAUMAN DRAWN BY: S.BAUMAN CHECKED BY: C.SAUVE		DATE: _____ CATEGORY: LOTIS PROJECT: SUNNYSIDE CHAMBER SHOOT TITLE: SUNNYSIDE CHAMBER LID WELDMENT	
	N/A	N/A	1ST ENG APPROVED BY: G.ROSENBAUM 1ST ENG CHECKED BY: S.BAUMAN 2ND ENG APPROVED BY: _____ 3RD ENG APPROVED BY: _____	
	NEXT ASSY	USED ON	DRAWING NUMBER: 18426 SHEET 1 OF 2	
	ASSEMBLY APPLICATION		REV 02	



DETAIL A
SCALE 1 : 3



SECTION D-D
SCALE 1 : 3



DETAIL B
SCALE 1 : 1
8 REQUIRED

FITS T-SLOT NUT
1/2-13, 7/8" WIDE

DO NOT SCALE DRAWING INTERPRET DIMENSIONS & TOLERANCES IN ACCORDANCE WITH ASME Y14-5M-94 TOLERANCES UNLESS OTHERWISE SPECIFIED LINEAR .X = .1 .XX = .01 .XXX = .005 ANGULAR ±1° <small>DIAMETRICAL SEE SPEC 1-002</small> MATERIAL: ASTM A-36 FINISH none	THIS DRAWING CREATED IN: <input type="checkbox"/> ACAD <input type="checkbox"/> MECH <input type="checkbox"/> IDEAS <input type="checkbox"/> INV <input checked="" type="checkbox"/> S-W		Steward Observatory, University of Arizona 933 N. Cherry Avenue, Tucson, AZ 85721 (520) 621-7659	
	ENGINEER: S.BAUMAN DESIGNED BY: S.BAUMAN DRAWN BY: S.BAUMAN CHECKED BY: C SAUVE 1ST ENG APPROVED BY: G.ROSENBAUM 1ST ENG CHECKED BY: S.BAUMAN 2ND ENG APPROVED BY: 3RD ENG APPROVED BY:		DATE: CATEGORY: LOTIS PROJECT: SUNNYSIDE CHAMBER SHOOT TITLE: SUNNYSIDE CHAMBER LID WELDMENT DRAWING NUMBER: 18426	
N/A NEXT ASSY ASSEMBLY APPLICATION		N/A USED ON		REV 02 SHEET 2 OF 2