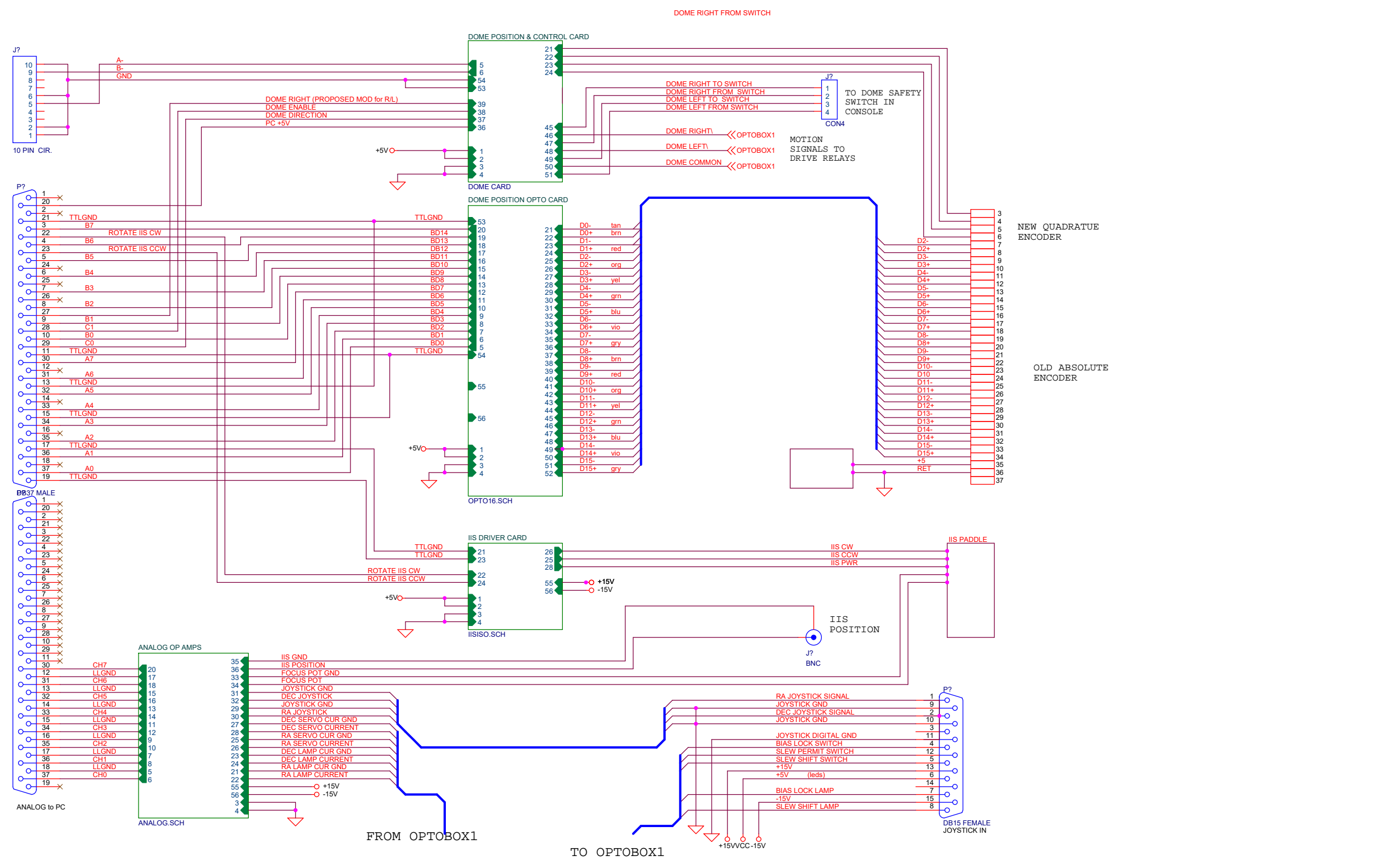


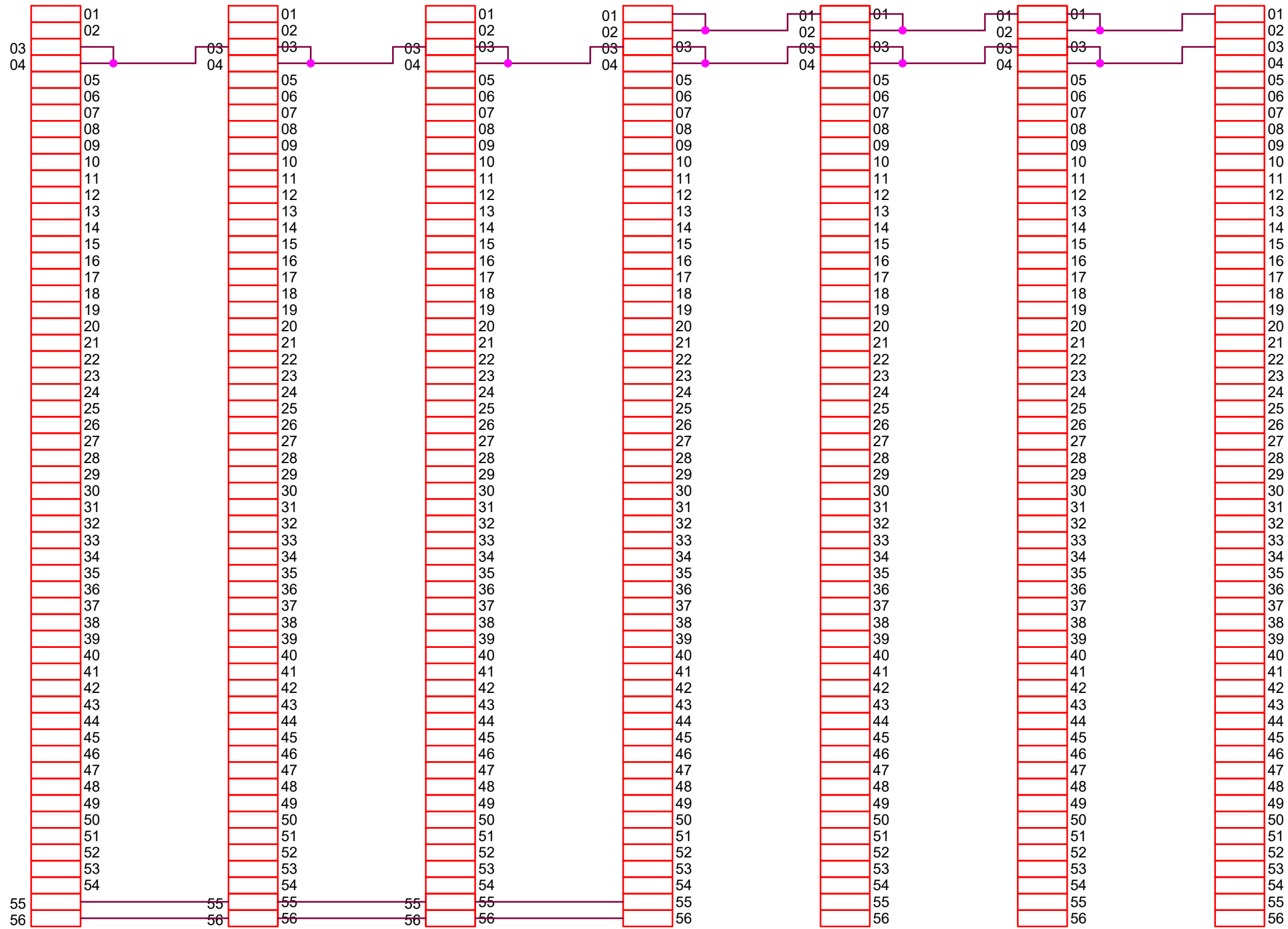
TO QUADRATURE CARD

TO DAS08 BOARD -  
DIGITAL I/O  
(BEFORE MOD)

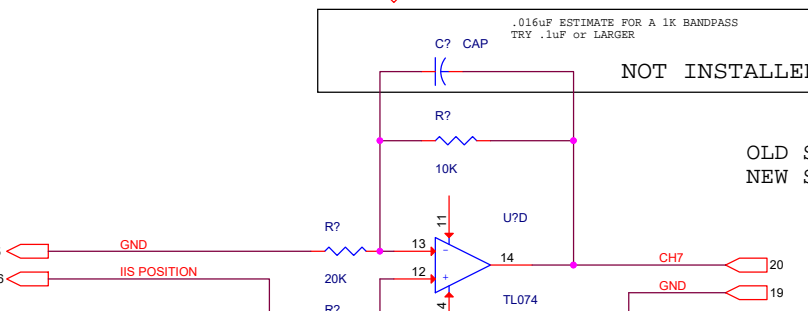
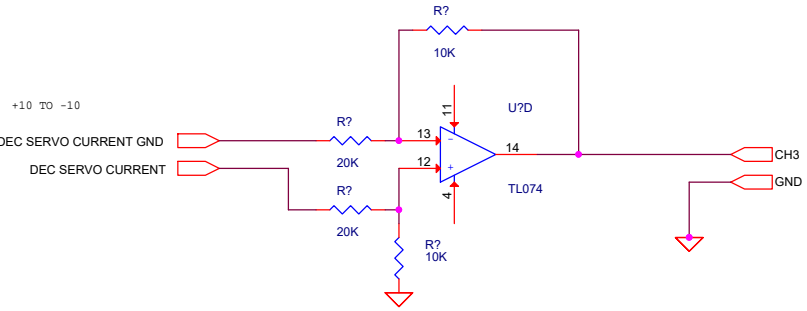
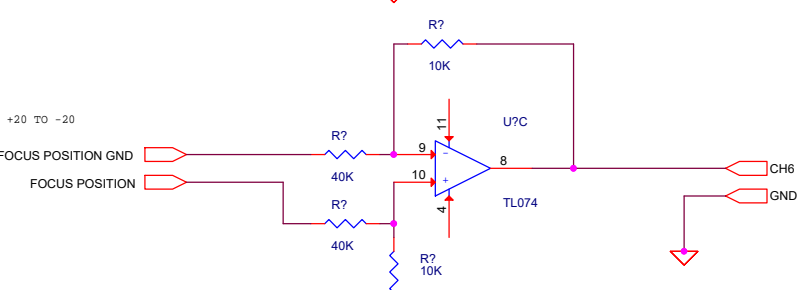
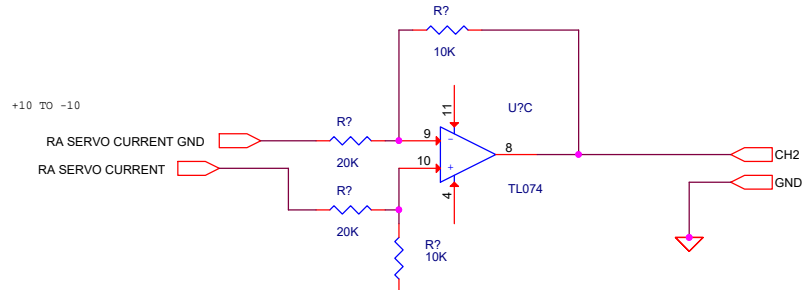
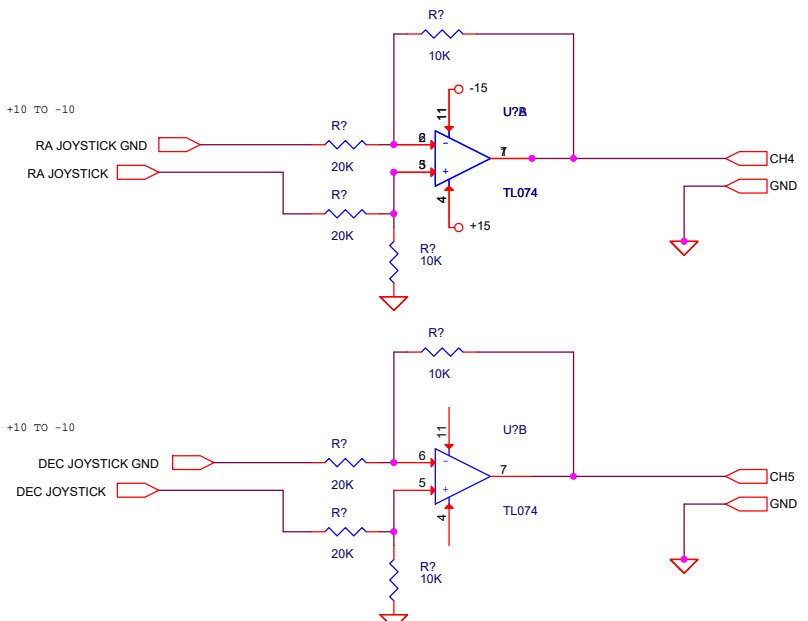
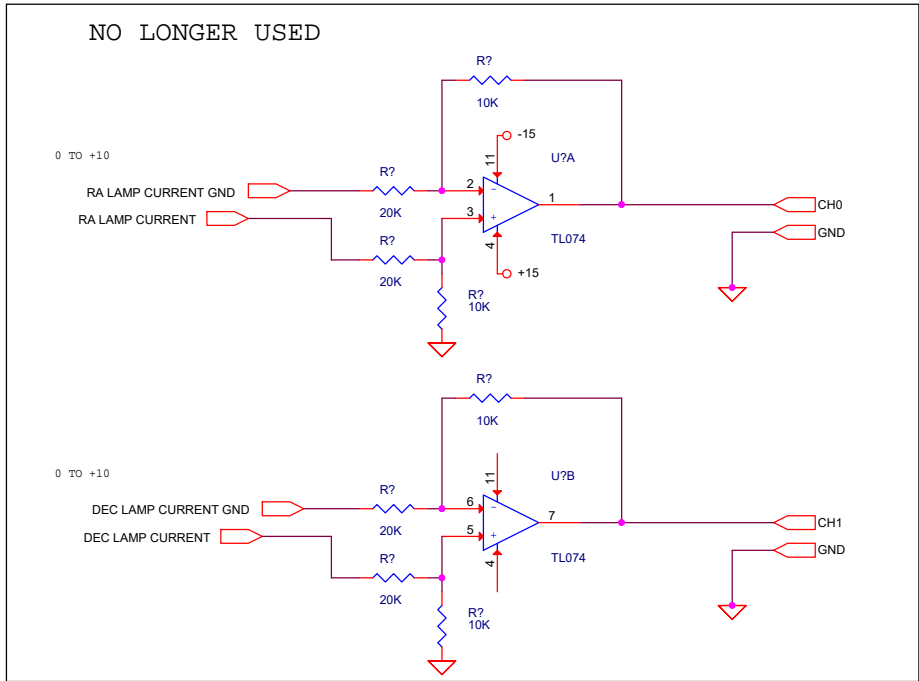
TO DAS08 BOARD -  
ANALOG INPUTS  
(BEFORE MOD)



<b>STEWART OBSERVATORY KITTE PEAK 90" TELESCOPE</b>		
Title		
OPTO-ISOLATION CRATE - PART 2		
Size	Document Number	Rev
C		A
Date:	Wednesday, May 31, 2017	Sheet 8 of 9

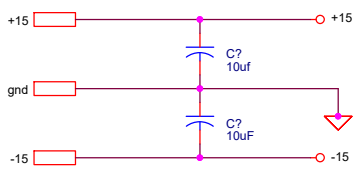


OPTOBOX BACKPLANE WIRING		
Size A	Document Number	Rev
Date: Wednesday, May 31, 2017	Sheet 6 of 9	



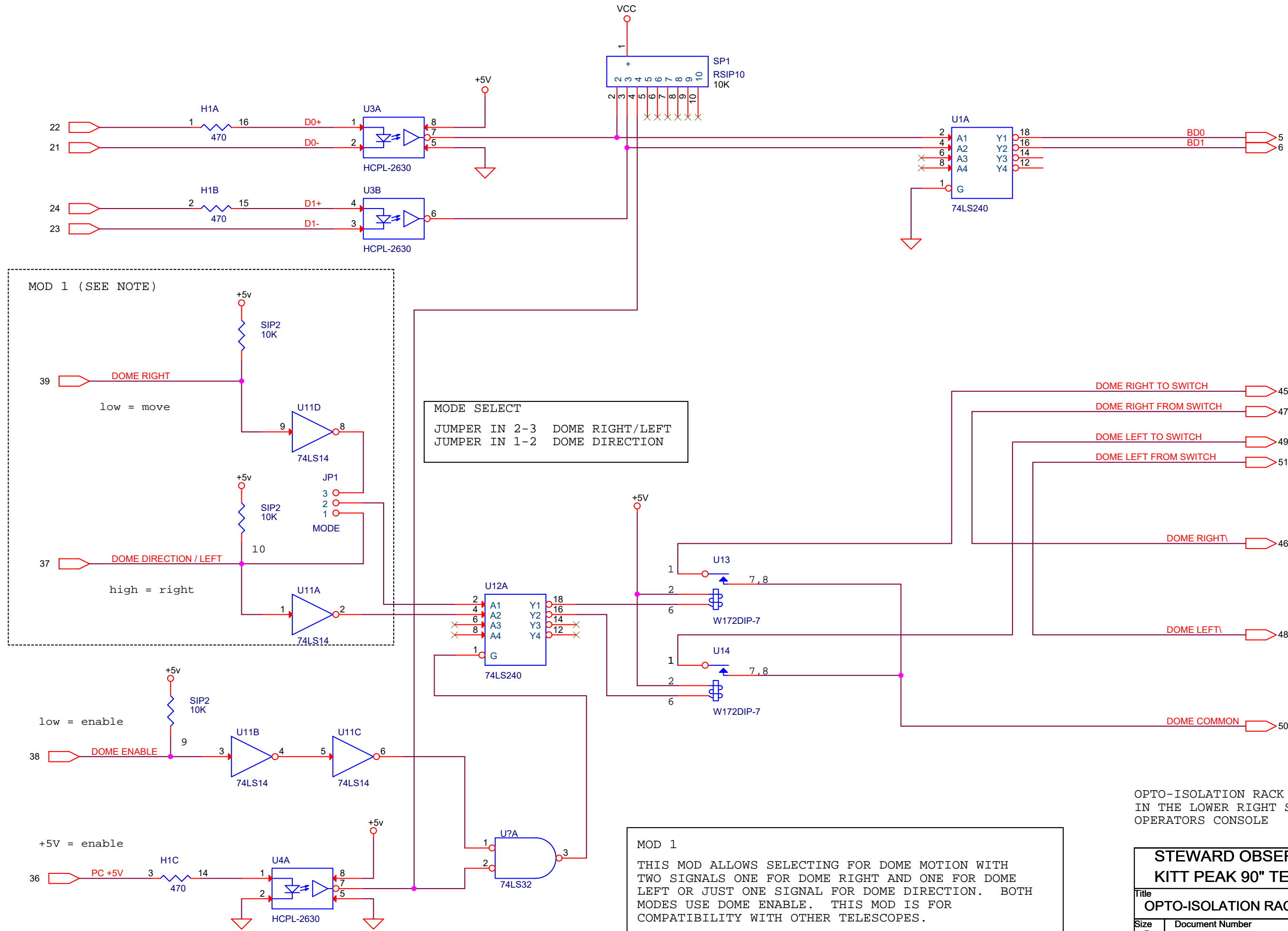
.016uF ESTIMATE FOR A 1K BANDPASS  
TRY .1uF or LARGER  
NOT INSTALLED

OLD SLOPE INTERCEPT: 0.246575 / -505.237  
NEW SLOPE INTERCEPT: 0.318 / -652.2



OPTO-ISOLATION RACK IS LOCATED  
IN THE LOWER RIGHT SIDE OF THE  
OPERATORS CONSOLE

STEWART OBSERVATORY KITTE PEAK 90" TELESCOPE		
Title	OPTO-ISOLATOR RACK - ANALOG CARD	
Size	Document Number	Rev
C		A
Date:	Wednesday, May 31, 2017	Sheet 1 of 9



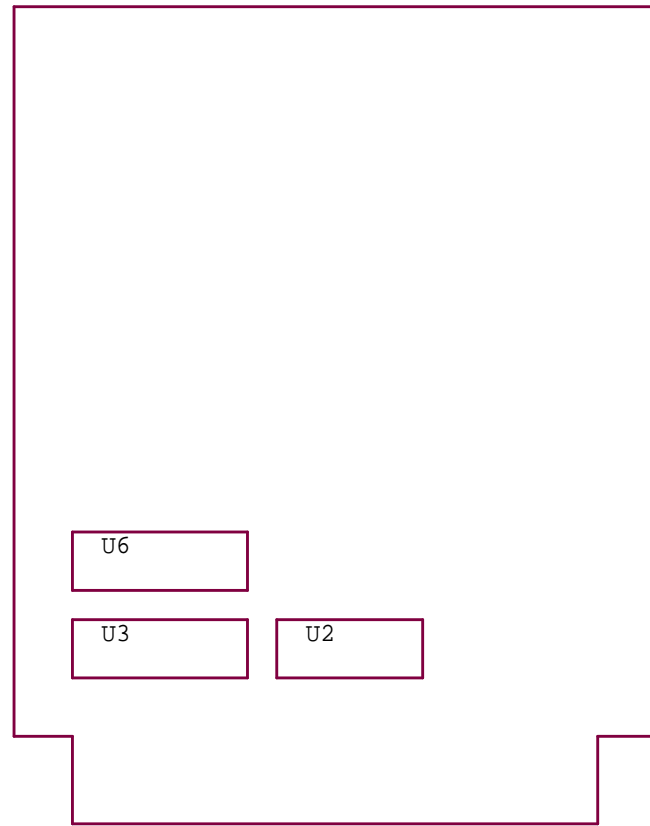
MODE SELECT  
 JUMPER IN 2-3 DOME RIGHT/LEFT  
 JUMPER IN 1-2 DOME DIRECTION

MOD 1  
 THIS MOD ALLOWS SELECTING FOR DOME MOTION WITH TWO SIGNALS ONE FOR DOME RIGHT AND ONE FOR DOME LEFT OR JUST ONE SIGNAL FOR DOME DIRECTION. BOTH MODES USE DOME ENABLE. THIS MOD IS FOR COMPATIBILITY WITH OTHER TELESCOPES.

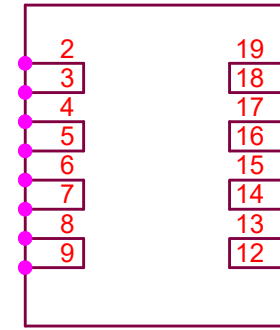
TO INTERLOCK SWITCH  
 LOCATED ON OPERATORS CONSOLE.

OPTO-ISOLATION RACK IS LOCATED IN THE LOWER RIGHT SIDE OF THE OPERATORS CONSOLE

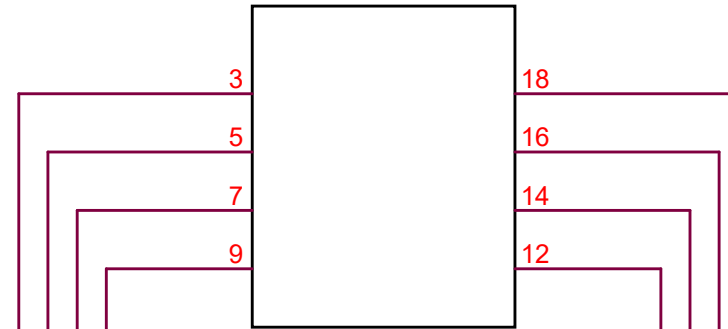
<b>STEWART OBSERVATORY KITT PEAK 90" TELESCOPE</b>		
Title <b>OPTO-ISOLATION RACK - DOME DRIVE CARD MOD 1</b>		
Size B	Document Number	Rev A
Date:	Wednesday, May 31, 2017	Sheet 2 of 9



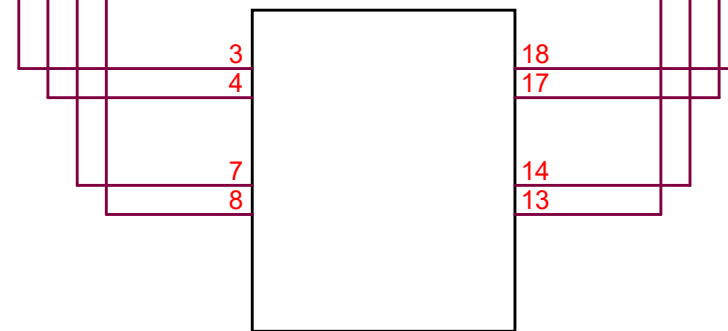
U2



U6



U3



LIMITS CARD MODIFICATION

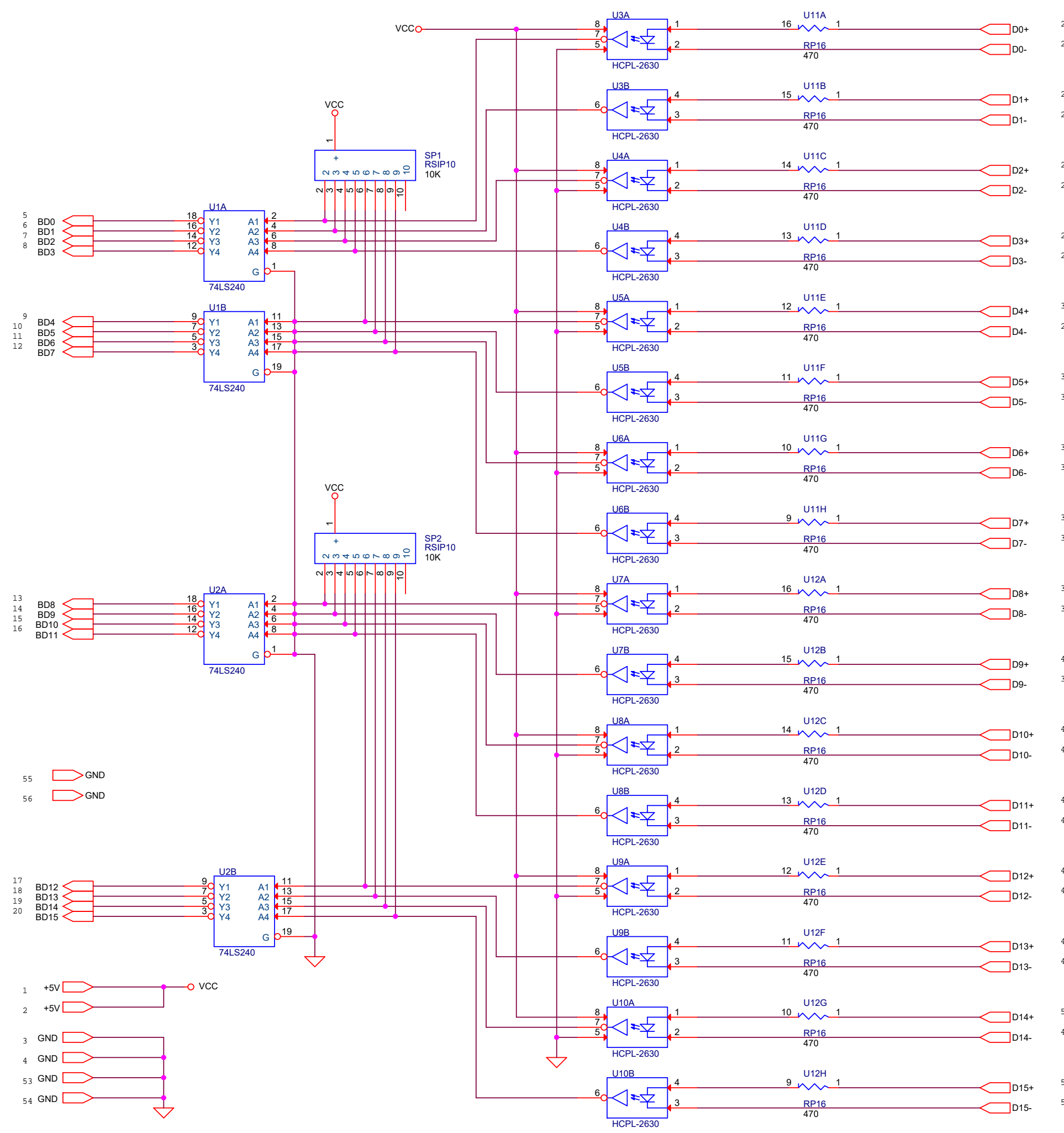
REQUIRED BEFORE INSTALLING THE LIMITS CARD  
IN THE NEW MOUNT MICRO TRANSLATOR BOX

- 1). REMOVE CHIP IN U2 (74LS374) AND REPLACE WITH HEADER
- 2). REMOVE CHIPS IN U3 (74LS373) AND U6 (74LS688)
- 3). INSTALL JUMPERS AS SHOWN

**UNIVERSITY of ARIZONA  
STEWART OBSERVATORY**

Title  
**90" LIMITS CARD MODIFICATION**

Size A Document Number Rev

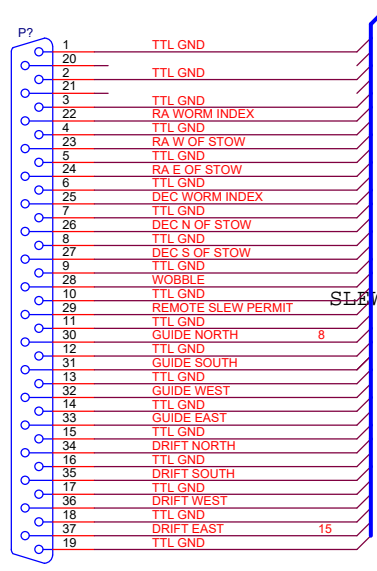


NOTE: GIVE EACH OPTO-ISOLATOR A  
.01uF CAP FROM VCC TO GROUND.

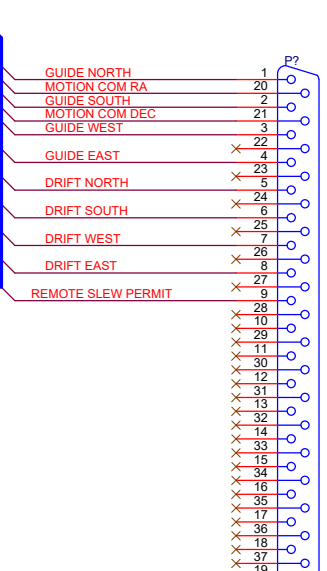
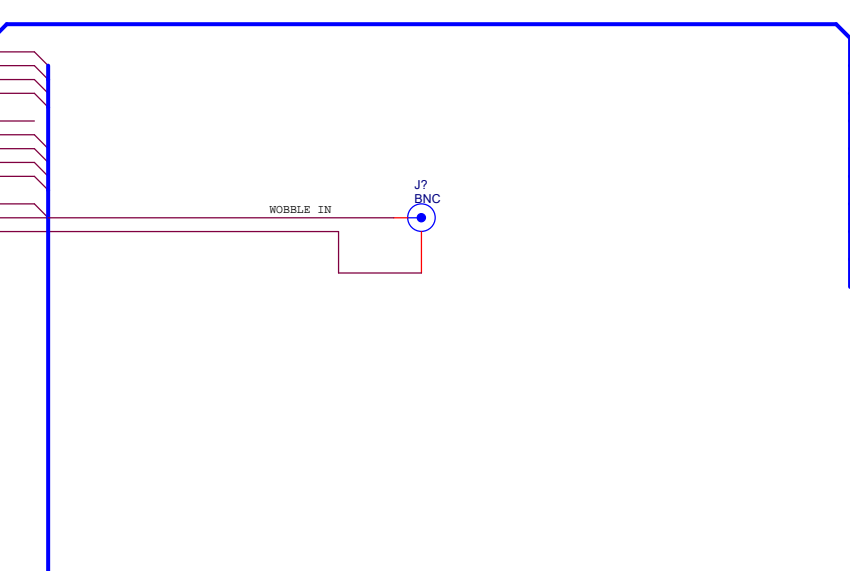
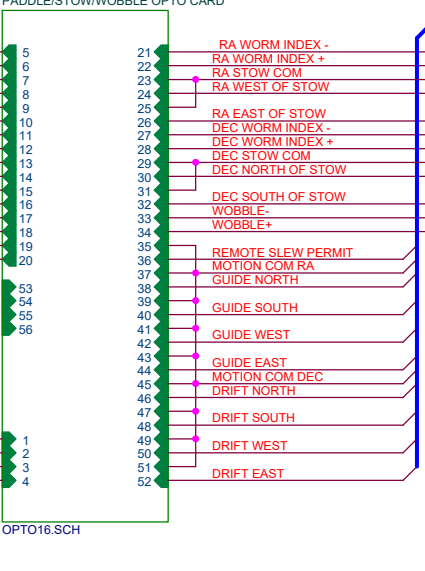
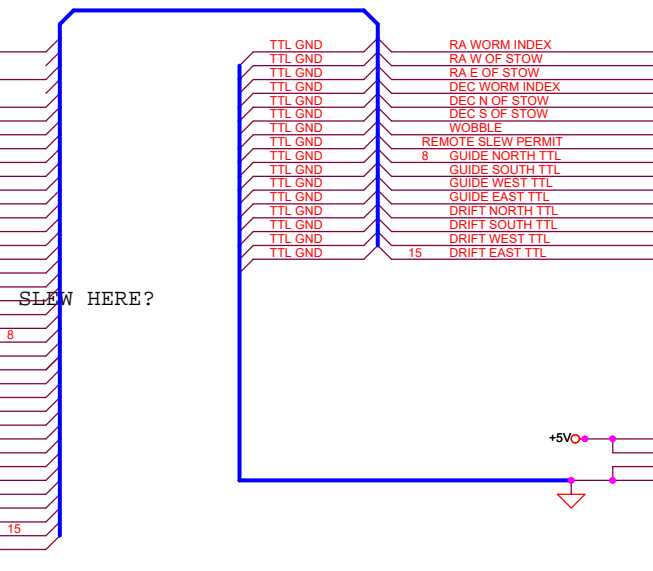
IN THE OPTO-ISOLATION RACK,  
LOCATED IN THE LOWER RIGHT SIDE  
OF THE OPERATORS CONSOLE

<b>UNIVERSITY of ARIZONA STEWART OBSERVATORY</b>		
Title OPTO-ISOLATION RACK - 16 BIT OPTICAL ISOLATION CARD		
Size B	Document Number	Rev
Date: Wednesday, May 31, 2017	Sheet 5 of 9	



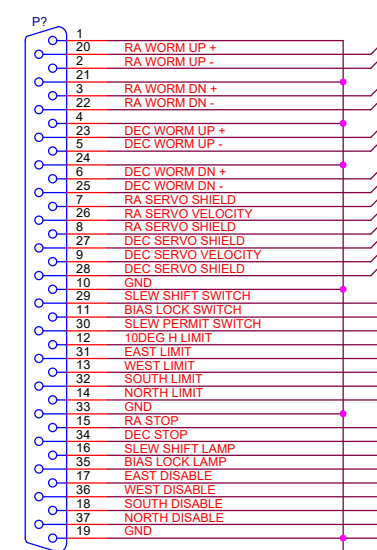


PADDLE to PC

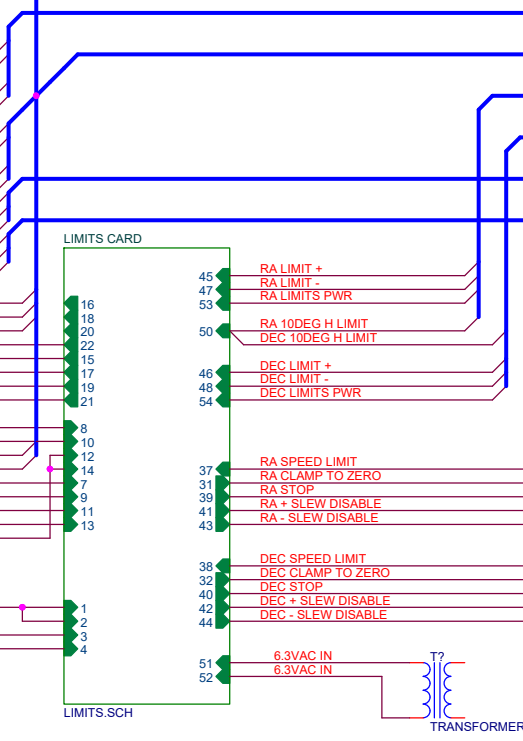


DB37 FEMALE PADDLE IN

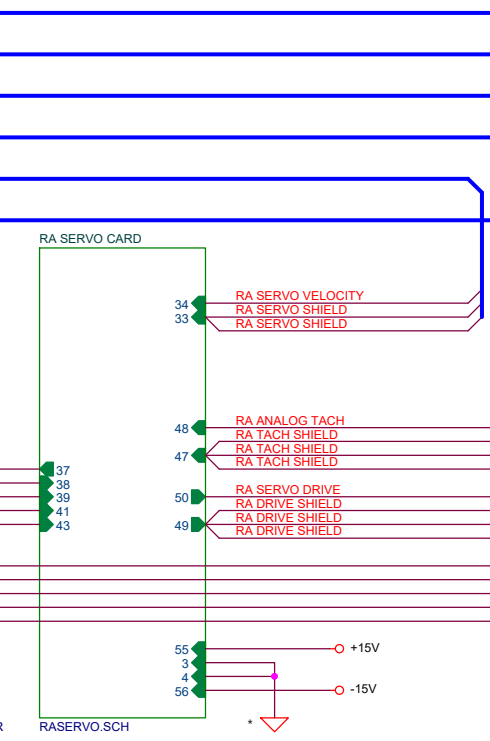
TO OPTOBOX2



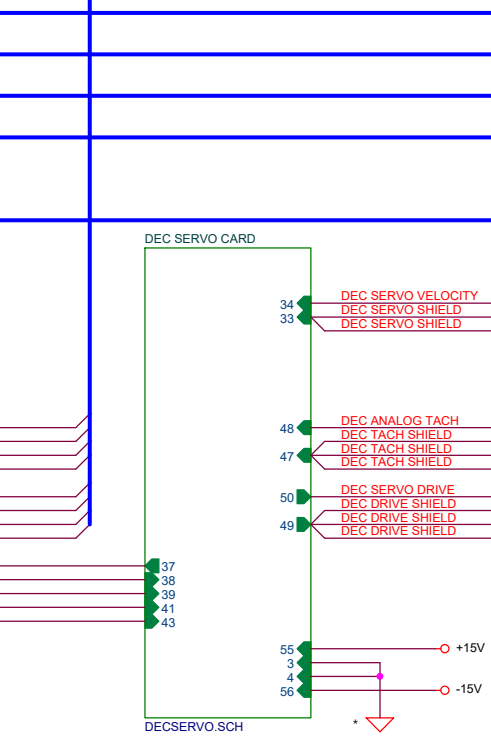
DB37 FEMALE SERVO to PC



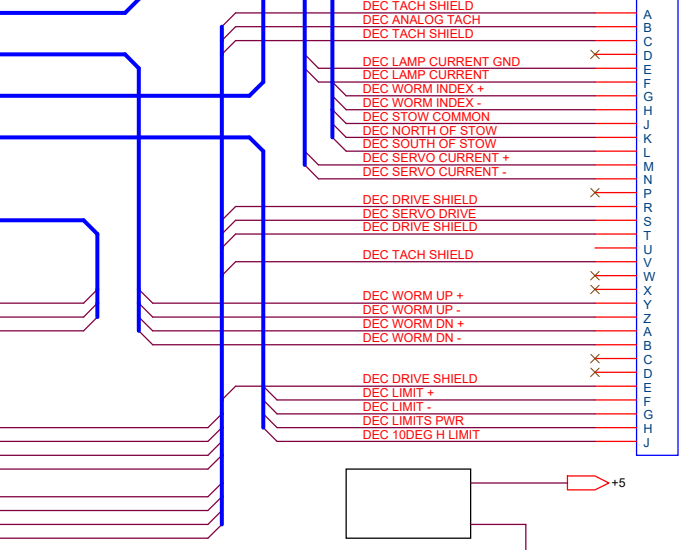
LIMITS.SCH



RASERVO.SCH



DECSERVO.SCH



**STEWART OBSERVATORY  
KITTE PEAK 90" TELESCOPE**

Title: **OPTO-ISOLATION CRATE - PART 1**

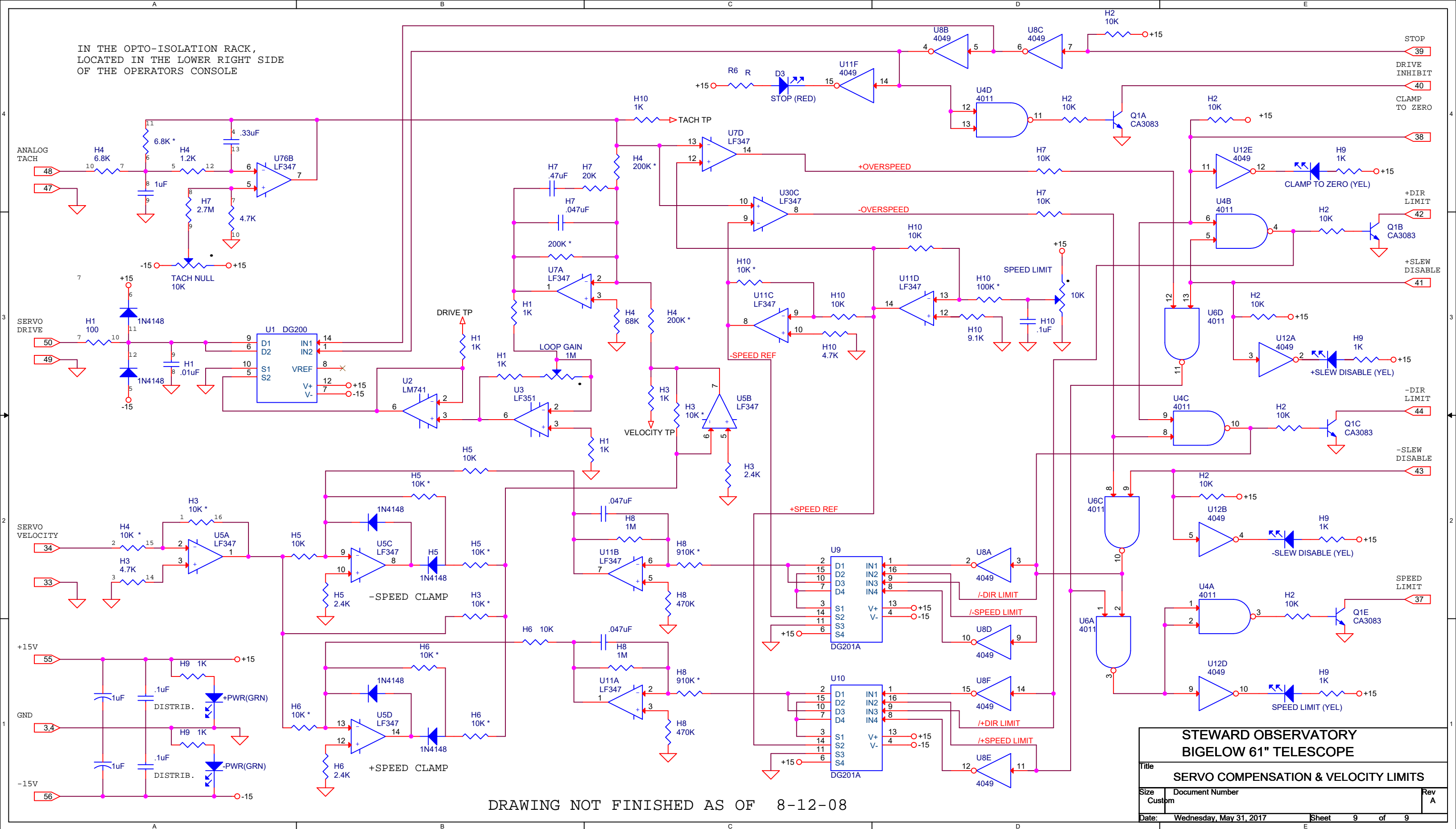
Size: C Document Number: Rev: A

Date: Wednesday, May 31, 2017 Sheet: 7 of 9

\* check for on board connection to DIG GND



IN THE OPTO-ISOLATION RACK,  
LOCATED IN THE LOWER RIGHT SIDE  
OF THE OPERATORS CONSOLE



DRAWING NOT FINISHED AS OF 8-12-08

<b>STEWART OBSERVATORY BIGELOW 61" TELESCOPE</b>		
Title		
<b>SERVO COMPENSATION &amp; VELOCITY LIMITS</b>		
Size	Document Number	Rev
Custom		A
Date:	Wednesday, May 31, 2017	Sheet 9 of 9