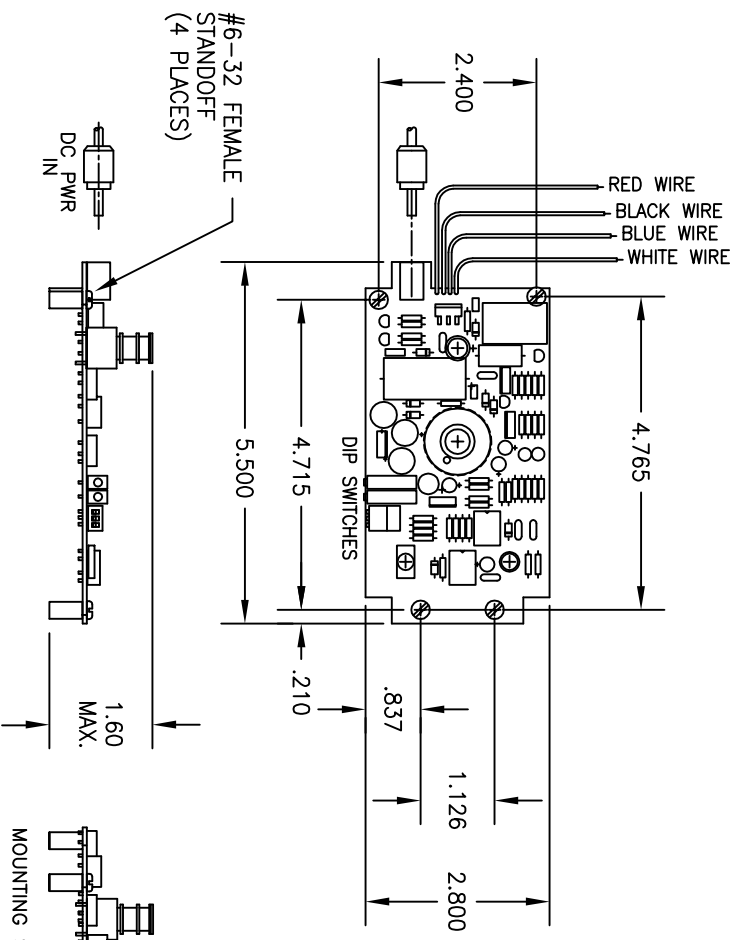


- NOTES:
- 1.0 REFERENCE DOCUMENTATION:
  - 1.1 TROUBLE SHOOTING AND SERVICE INSTRUCTIONS: 25151
  - 1.2 OPERATING INSTRUCTIONS: 25164

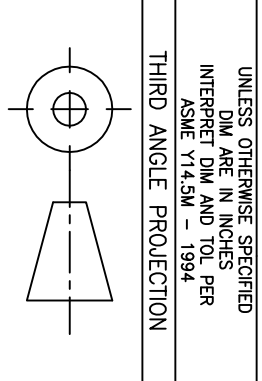
- 2.0 WIRING IDENTIFICATION:
- 2.1 RED WIRE: TTL IN (+)
- 2.2 BLACK WIRE: TTL IN (GROUND)
- 2.3 BLUE WIRE: SHUTTER (+)
- 2.4 WHITE WIRE: SHUTTER (-)

REVISION HISTORY		DATE	ECO	APP. BY	DATE
ZONE	REV	BY	DESCRIPTION		
	X1	WJ	PRELIMINARY	4/22/99	
	A	WJ	RELEASED FOR PRODUCTION	4/22/99	



GENERAL NOTES UNLESS OTHERWISE INDICATED ON DOCUMENT:

1. DIMENSIONAL LIMITS APPLY PRIOR TO CHEMICAL FINISH.
2. MAXIMUM ALLOWABLE DIMENSIONAL CHANGE DUE TO CHEMICAL FINISH IS +.0003"/-0 PER SURFACE.
3. BREAK ALL SHARP EDGES .005 x 45°
4. MAX. FILET RADII .015
5. SURFACE FINISH:  $\checkmark$



CHEMICAL FINISH		FABRICATE AND ANODIZE PER SPEC BEFORE DELIVERY		MATERIAL:	
NO SUFFIX					
-UF		NONE	REQUIRED	DRAFTER: W JOHNSON	
-AZ		ANODIZE	ONLY PER SPEC.	DATE: 4/22/99	
CHEM. ENL. SPEC.				CHECKED BY: _____	
				DATE: _____	

P. NO. TITLE:		SYSTEM DRAWING, OEM SHUTTER CONTROLLER BOARD	
SIZE	DWG. NO.		
B	25160-S		
SCALE: 2/1	PATH: J:\LEX251\25160-S.DWG	SHEET	1 OF 1