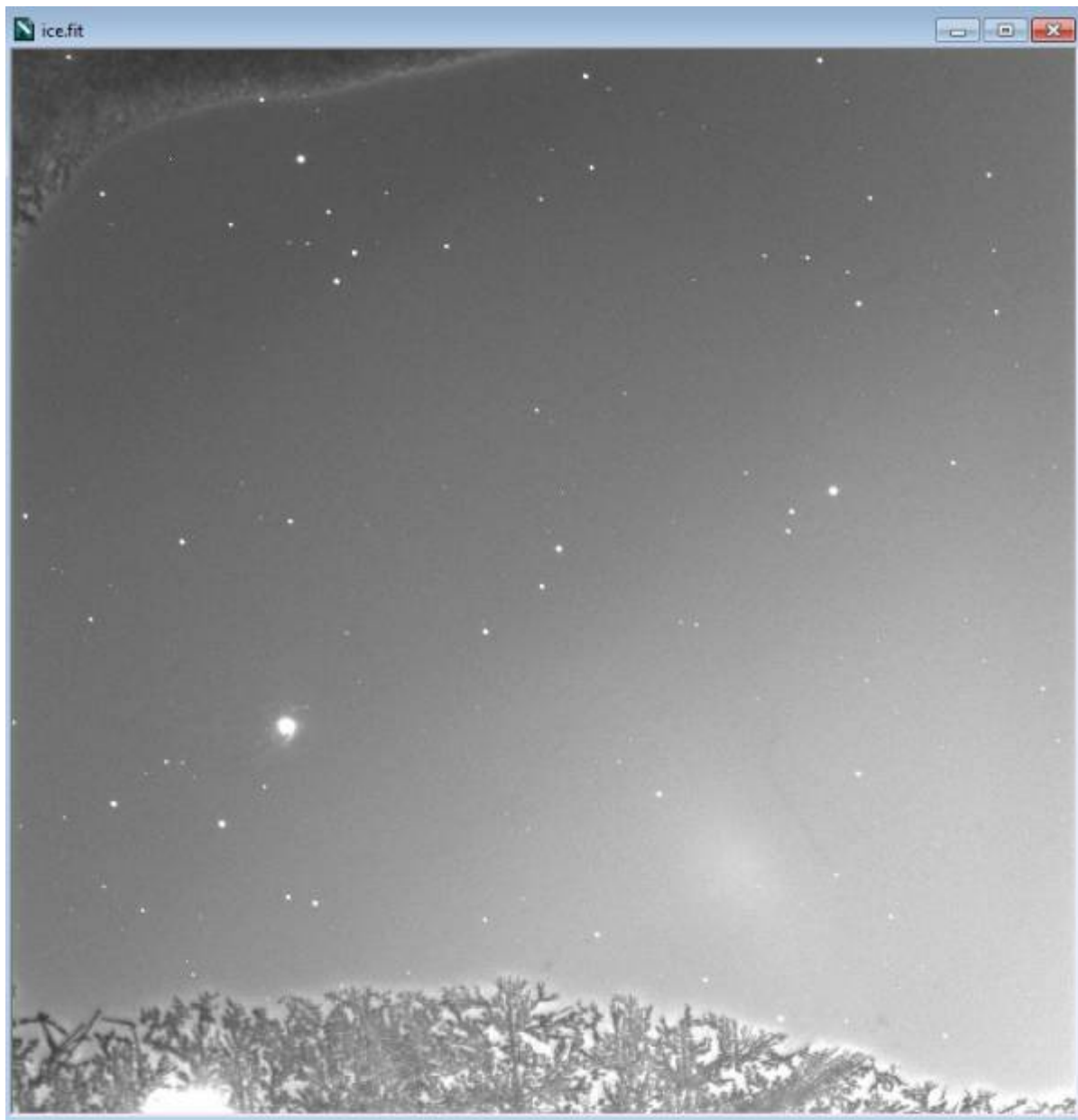


Recharging the CCD Desiccant

Amateur CCD cameras generally use a desiccant to absorb moisture that would condense on the CCD window or chip. When the chip is cooled any latent moisture crystallizes and forms ice. See the picture below:



The above clearly shows frost. However, ice usually forms a translucent (foggy) circle that changes size while the chip is cooled (and then is “locked in” once the chip reaches temperature). These are all indications the desiccant needs to be dried out. There is a plug in the camera body that stores the desiccant to be recharged.

Procedure

1. In a clean space, using electrostatic precautions, begin by opening the filter while enclosure and remove the filter wheel. (See [Cleaning the CCD Filters](#))

-
2. Remove the four bolts that surround the CCD window and attach the bottom of the filter wheel enclosure to the front face of the CCD camera body.



1.

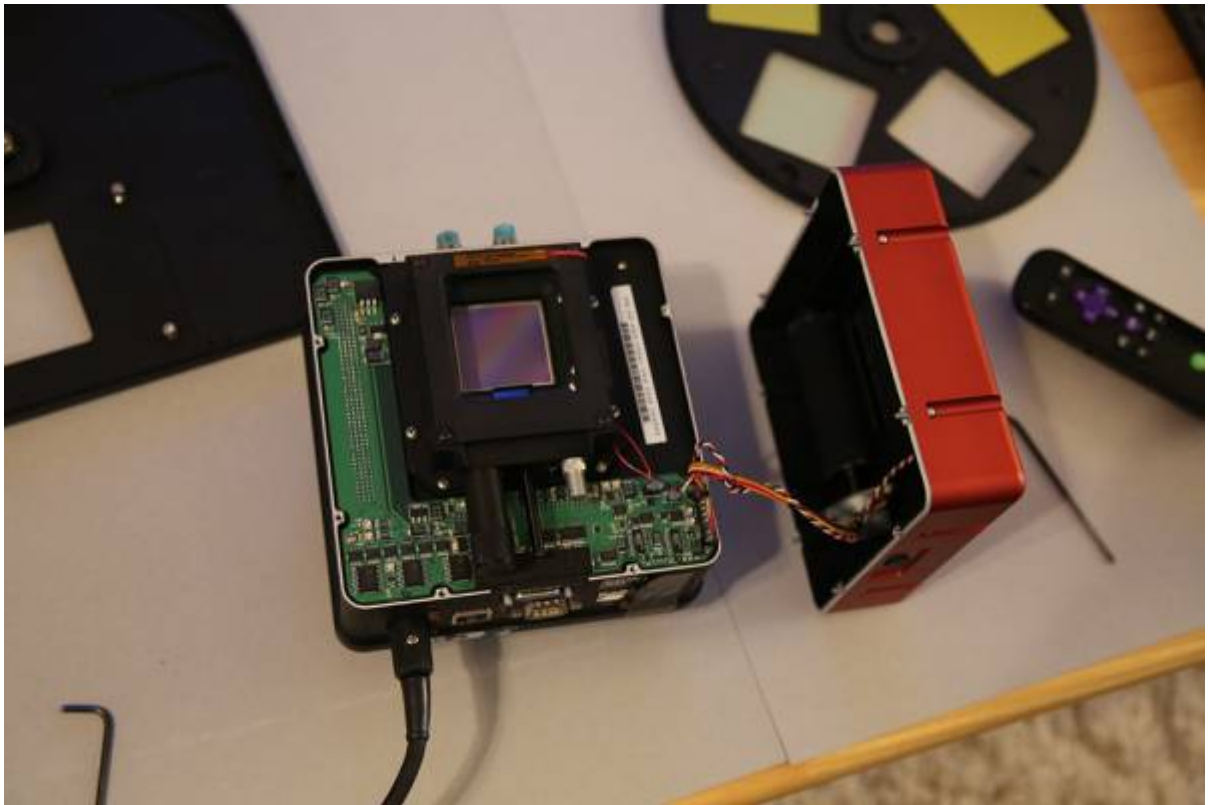
-
-
3. Now remove the 8 bolts around the middle of the camera body in order to access the internal parts.



1.

-
-
-
4. Carefully lift the upper portion without unplugging or tugging on the wires that connect to the shutter.

1.



From:
<https://lavinia.as.arizona.edu/~tscopewiki/> - **MOON**

Permanent link:
https://lavinia.as.arizona.edu/~tscopewiki/doku.php?id=recharging_the_ccd_desiccant&rev=1490327899

Last update: **2017/03/23 20:58**

