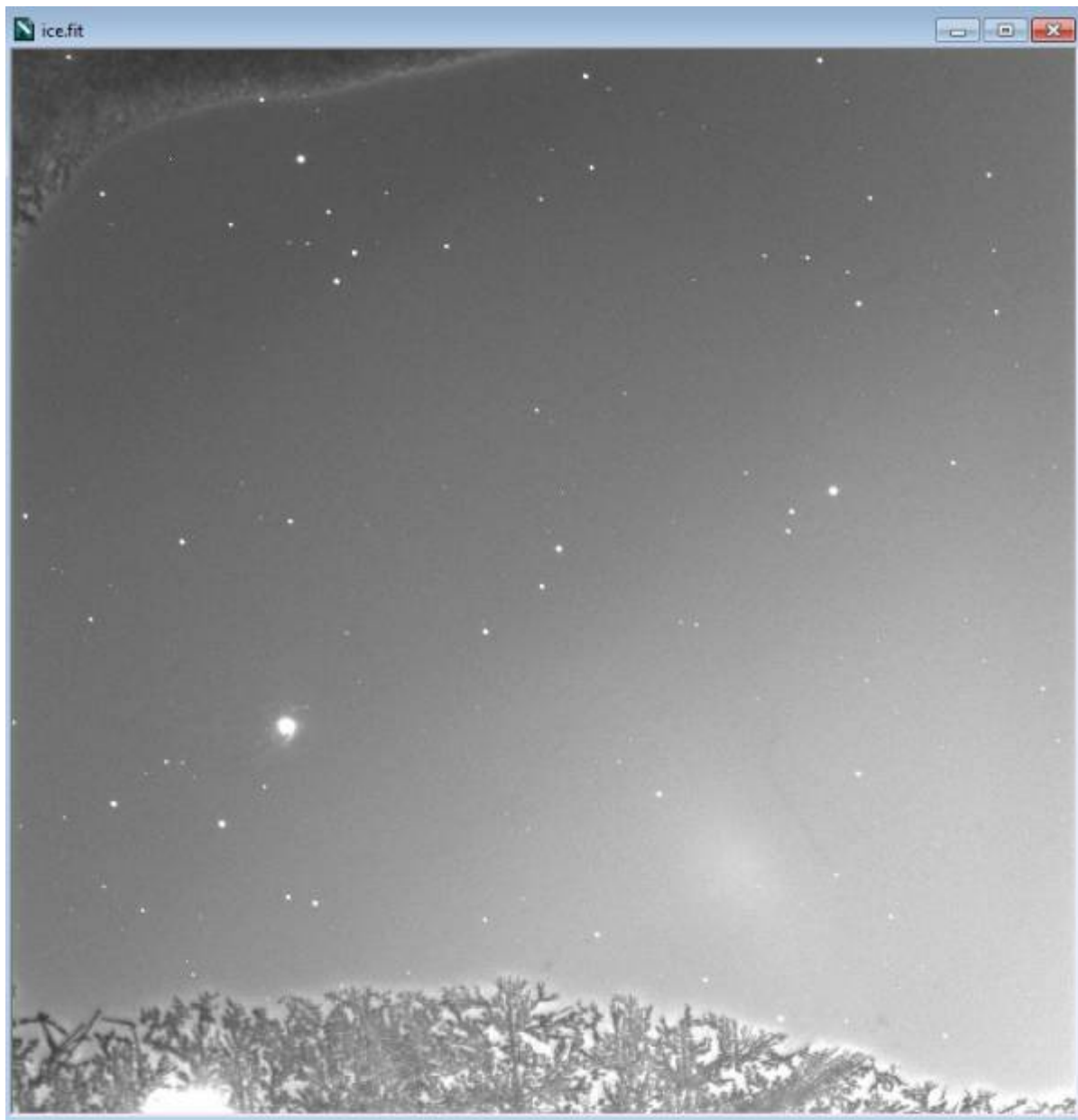


# Recharging the CCD Desiccant

Amateur CCD cameras generally use a desiccant to absorb moisture that would condense on the CCD window or chip. When the chip is cooled any latent moisture crystallizes and forms ice. See the picture below:



The above clearly shows frost. However, ice usually forms a translucent (foggy) circle that changes size while the chip is cooled (and then is “locked in” once the chip reaches temperature). These are all indications the desiccant needs to be dried out. There is a plug in the camera body that stores the desiccant to be recharged.

## Procedure

1. In a clean space, using electrostatic precautions, begin by opening the filter while enclosure and remove the filter wheel. (See

Last  
update: 2017/03/23 20:38 recharging\_the\_ccd\_desiccant [https://lavinia.as.arizona.edu/~tscopewiki/doku.php?id=recharging\\_the\\_ccd\\_desiccant&rev=1490326687](https://lavinia.as.arizona.edu/~tscopewiki/doku.php?id=recharging_the_ccd_desiccant&rev=1490326687)

---

From:  
<https://lavinia.as.arizona.edu/~tscopewiki/> - **MOON**

Permanent link:  
[https://lavinia.as.arizona.edu/~tscopewiki/doku.php?id=recharging\\_the\\_ccd\\_desiccant&rev=1490326687](https://lavinia.as.arizona.edu/~tscopewiki/doku.php?id=recharging_the_ccd_desiccant&rev=1490326687)

Last update: **2017/03/23 20:38**

