

# Schulman Telescope Shutdown Procedure

The steps to shutdown the telescope are somewhat the reverse of the [Startup](#) process- but greatly simplified. Knowledge of the Startup process as well as [using the LCOGT GUI and moving the telescope](#) are assumed in the steps below.

## Telescope and Dome

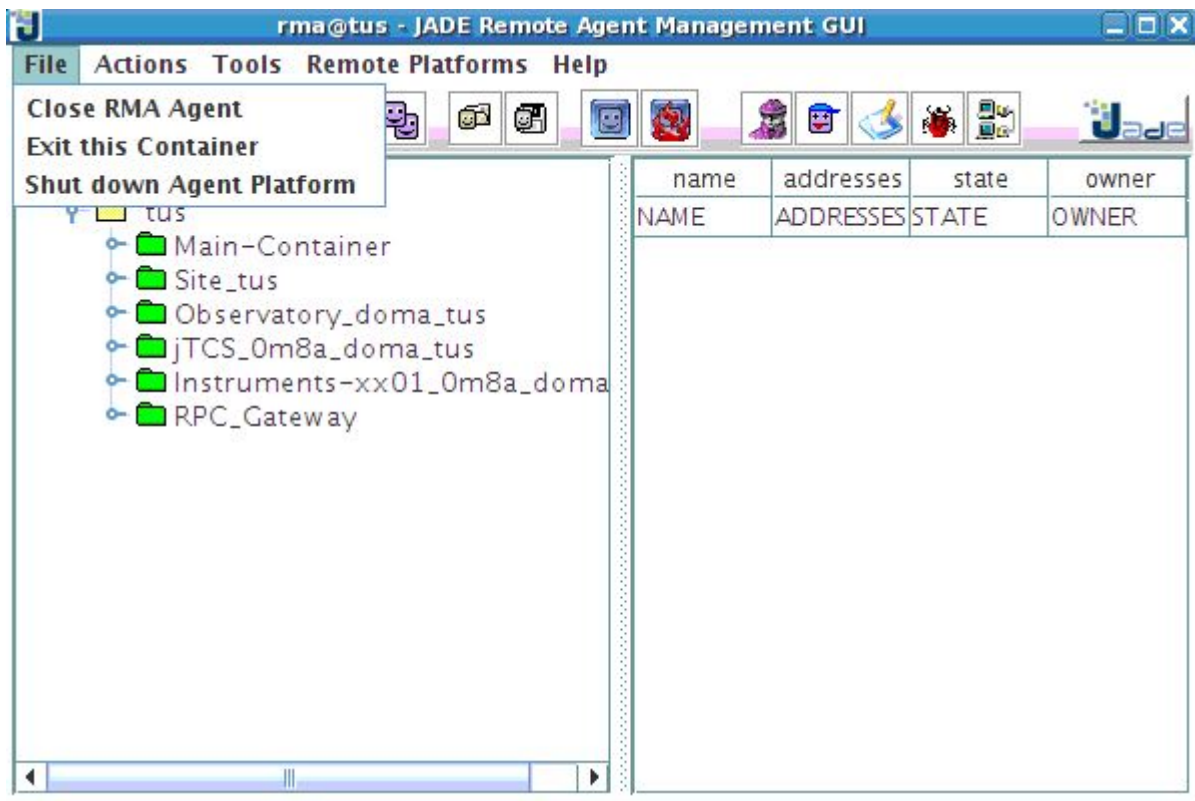
1. Close the telescope Mirror Covers.
2. Close observatory Dome (if not already closed).
3. Park the telescope (or move it to the park position and turn the tracking off). Make certain telescope is not tracking.
4. Make sure to leave the telescope in a balanced state. This means either with the camera on or Eyepiece and weights.
5. Rotate Dome (any method) to chosen safe position. Park position is currently at 59 degrees [Azimuth](#).
6. Press the red button on the [dome controller box](#) to cut power to it.

## Main Computer

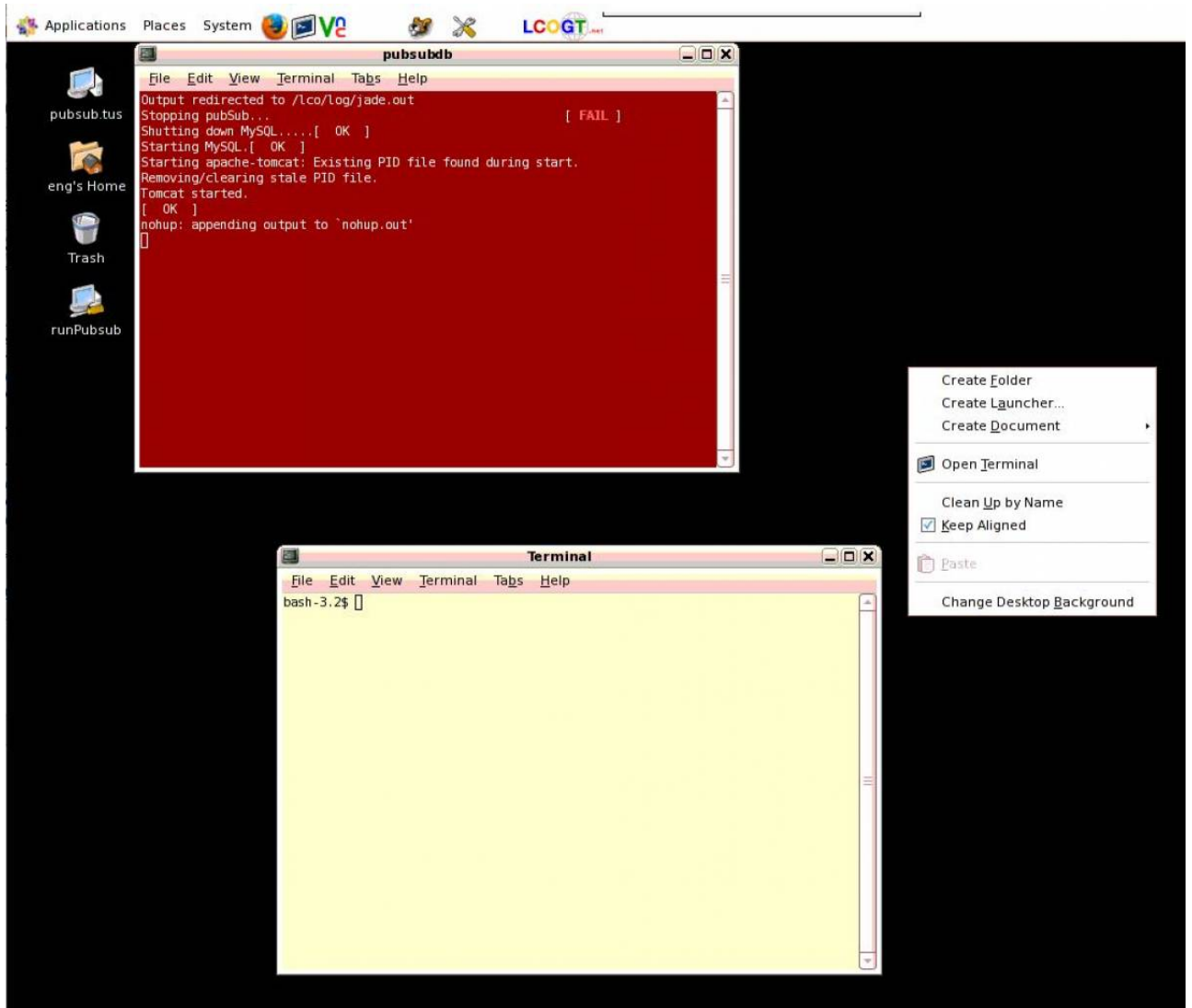
1. On the main observatory computer [disconnect the telescope via ACP](#) (if connected) and TIM unit.
2. Close any running software on the desktop. (Though do not turn it off yet)

## Controller Shutdown

1. Using VNC access PubSub.
2. Shutdown the Agent Platform:



- 3.
4. Open a terminal using either the terminal icon at the top of the desktop or by Right Clicking on the desktop as shown below:

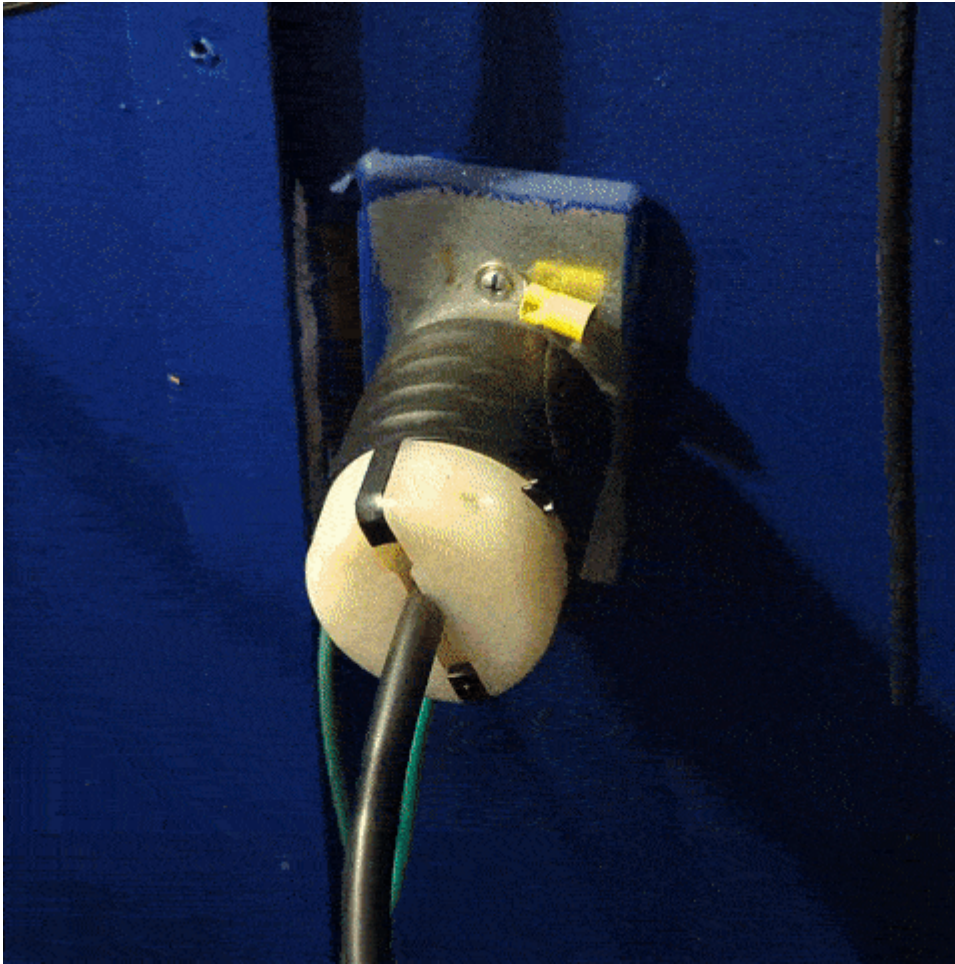


- 5.
6. At the prompt in the new terminal window type `sudo poweroff` → This will shutdown PubSub, you will know it works when the VNC screen freezes or shows “Disconnected”.
7. Using VNC access the MIC computer.
8. Open a new terminal and again execute `sudo poweroff` just as on PubSub
9. Turn the [red controller switch](#) to “Off”

## Main Computer and UPS's

Now you can turn off the Main Computer via whatever method. Make sure it's off (and not installing updates) before proceeding.

Turn off the Large UPS (for telescope controller) by pressing the “power” button. The screen indicates the instructions. Unplug the Large UPS from the wall.

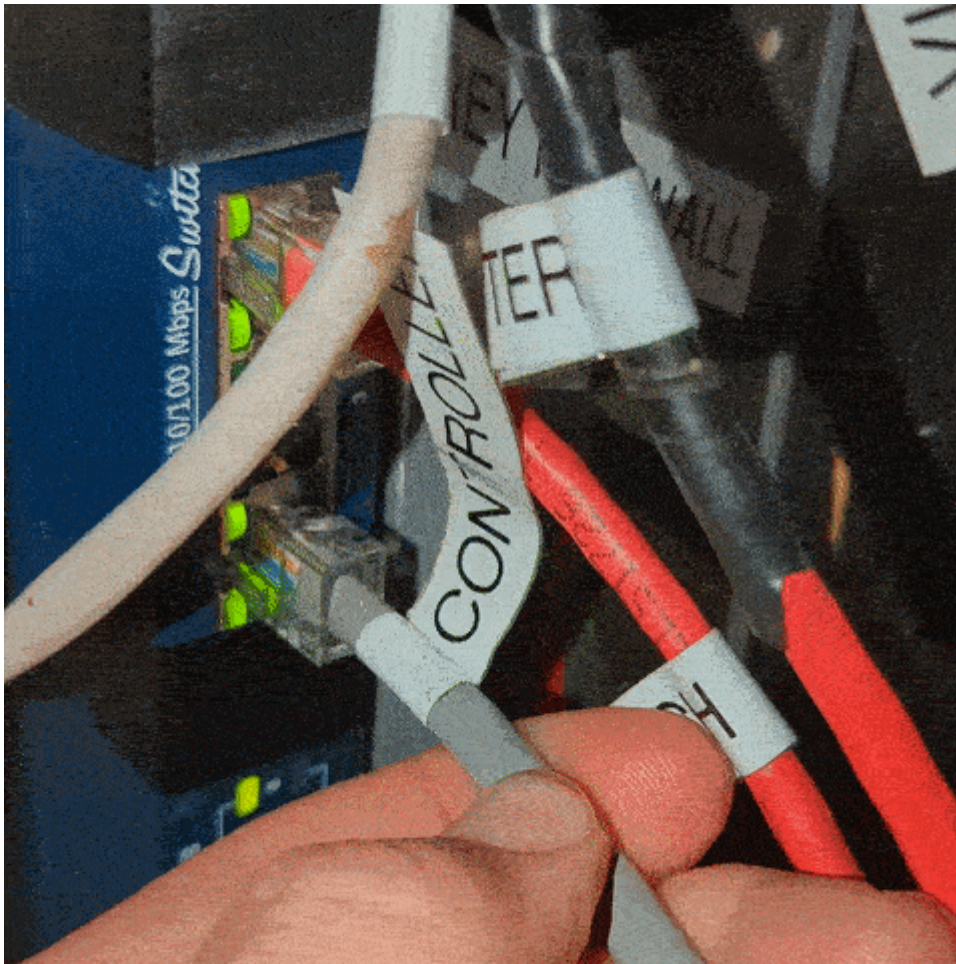


Turn off small UPS (for computer and remote power outlets). Unplug from the wall.



In Warm room unplug the CAT5 cables that give service to Controller. This is to protect it from any lightning travelling through the Ethernet cable (RIP Phillips in 2019).





Consider covering the Telescope and main computer desk with tarps. The desk should be quite easy but the telescope can be challenging. If you do not have a helper or are simply unable to do so make sure to inform mountain operations.

From: <https://lavinia.as.arizona.edu/~tscopewiki/> - MOON

Permanent link: [https://lavinia.as.arizona.edu/~tscopewiki/doku.php?id=public:catalinas:lemmon:schulman\\_32:shutdown\\_procedure&rev=1661370882](https://lavinia.as.arizona.edu/~tscopewiki/doku.php?id=public:catalinas:lemmon:schulman_32:shutdown_procedure&rev=1661370882)

Last update: 2022/08/24 12:54

