

# Normal Operating Instructions for the Schulman 0.8m Telescope

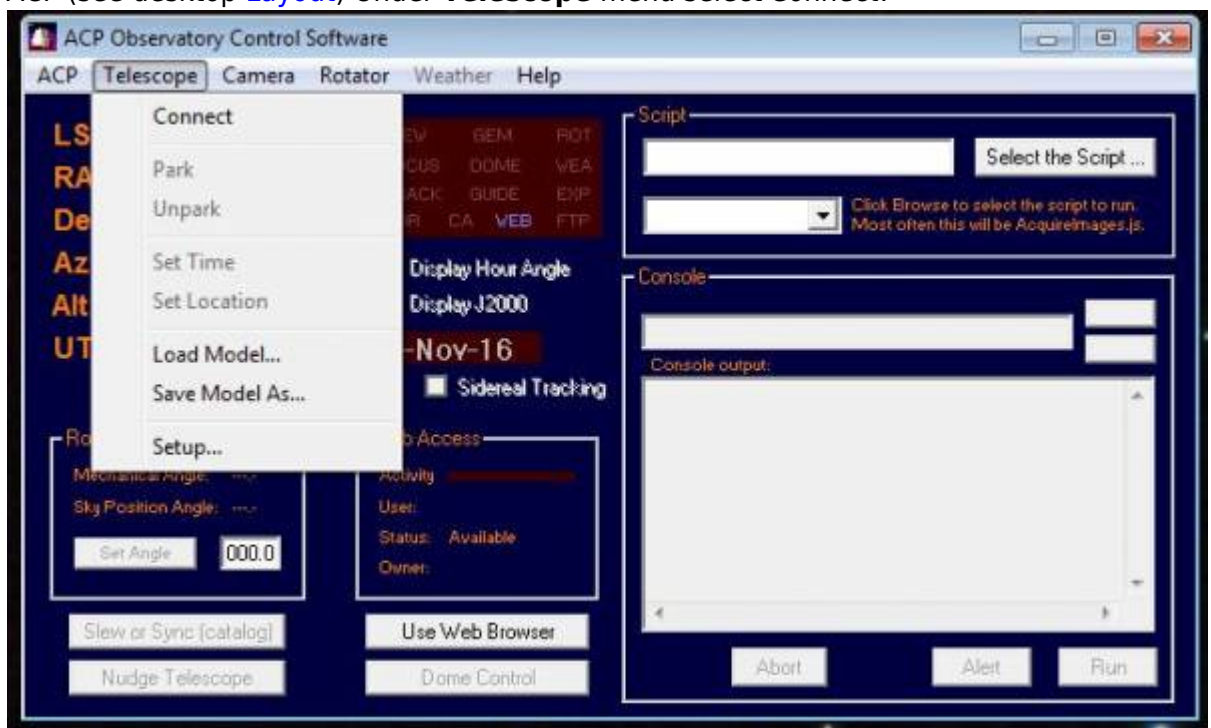
In this case “normal” basically means using the telescope for visual observing (SkyNights programs).

## Everything that follows assumes the following:

- Telescope Controller is operational and in the normal state. (Telescope servos are on and the telescope has been homed. The telescope is in the ready state to observe.)
- Dome is operational and in the normal state.
- Computer does not have other running software, scripts or connections that would interfere with normal operations.

## Starting things up

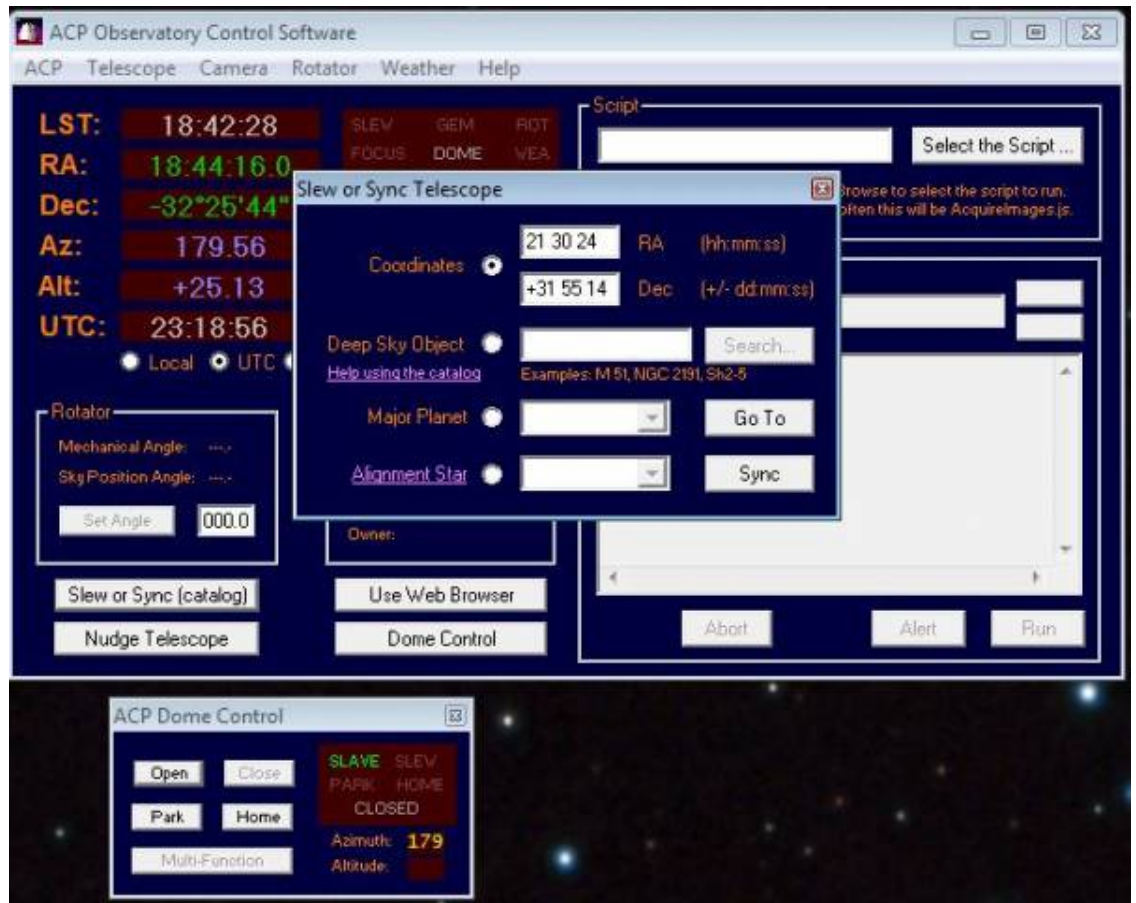
1. Open ACP (see desktop [Layout](#)) Under **Telescope** menu select *Connect*.



1. Upon connecting the heads up screen will show the coordinates of the telescope. Please verify LST and coordinates make sense.
3. If ACP complains the COM port is not available, it is likely another program is talking to the DOME or Telescope controllers. (e.g. ASCOM Dome software)
4. Also ACP is set up to command the dome to find **HOME** when first connecting. If ACP was already connected to the telescope and the dome is slaved the dome will not move.
2. Press the “Dome Control” button to reveal the dome state. It will only allow this once the dome is homed and not moving.

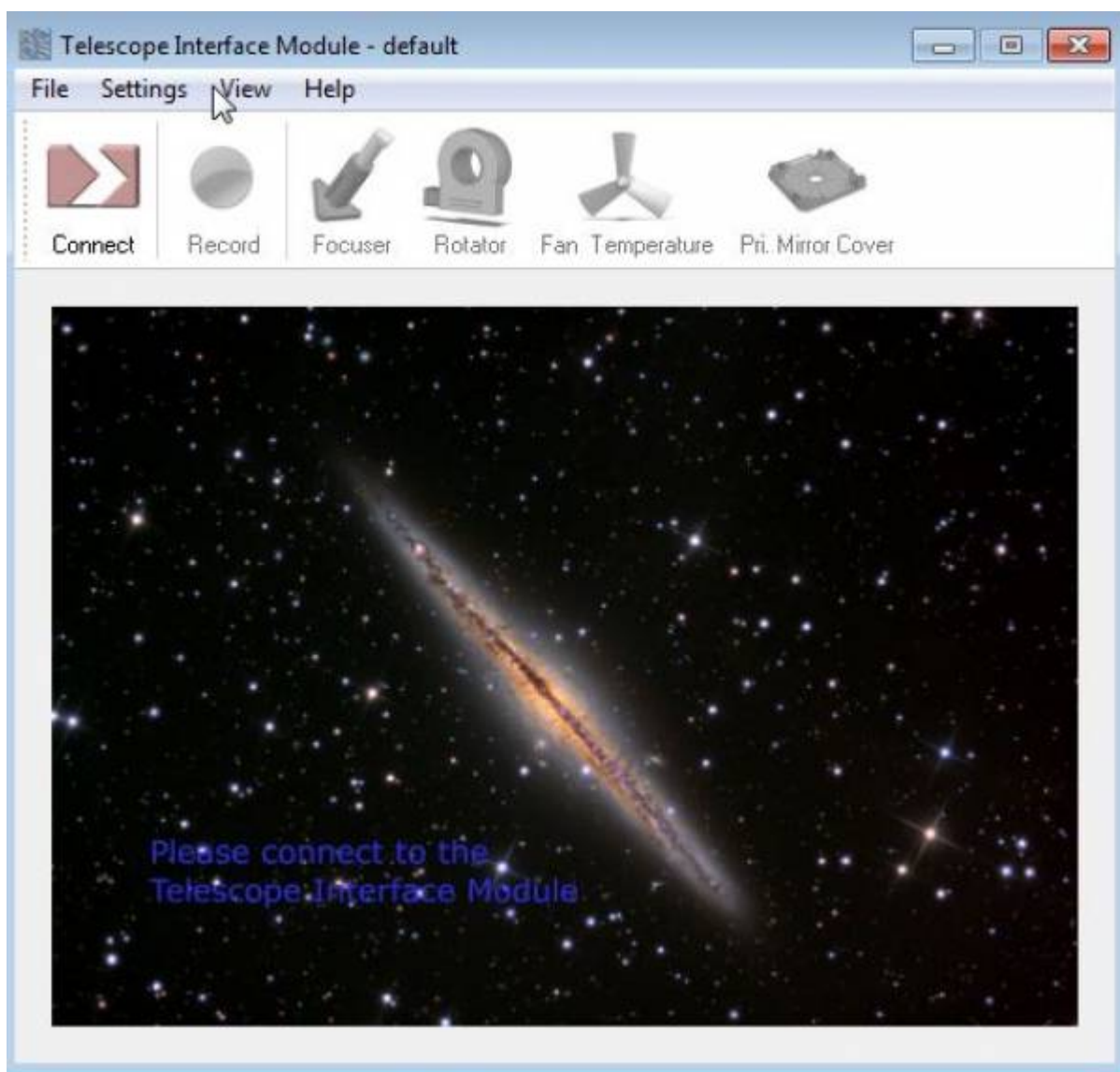


1. Seeing *Slaved* and reporting the correct Azimuth is a success.
3. Open the dome by pressing the "Open" button.
4. After the shutter is open move the telescope to the [Zenith](#) position (in order to open the mirror covers). Once there the telescope is now tracking.
  1. Press the *Slew or Synch (Catalog)* button to command the telescope to move.
  2. Select to radio button for *Coordinates* and input LST values for the RA coordinates and 32 for Declination.



1.

3. Press the *Go To* button to slew to [Zenith](#).5. Open the RCOS TIM software and *Connect*.



1.

6. *OPEN* the Mirror Covers.

7. Check the *FOCUS* tab to be certain the secondary mirror is at the Eyepiece focus position.

From:  
<https://lavinia.as.arizona.edu/~tscopewiki/> - MOON

Permanent link:  
[https://lavinia.as.arizona.edu/~tscopewiki/doku.php?id=normal\\_operating\\_instructions&rev=1478226332](https://lavinia.as.arizona.edu/~tscopewiki/doku.php?id=normal_operating_instructions&rev=1478226332)

Last update: 2016/11/03 19:25

