

# How the "Park" position works with the Schulman Telescope

On a general telescope park positions can be defined by a physical limit switch/indicator or through software by means of defining a particular telescope position. Some software programs also couple the position of “Park” with the action of moving to a park position and then turning off sidereal tracking. Not all software programs do this.

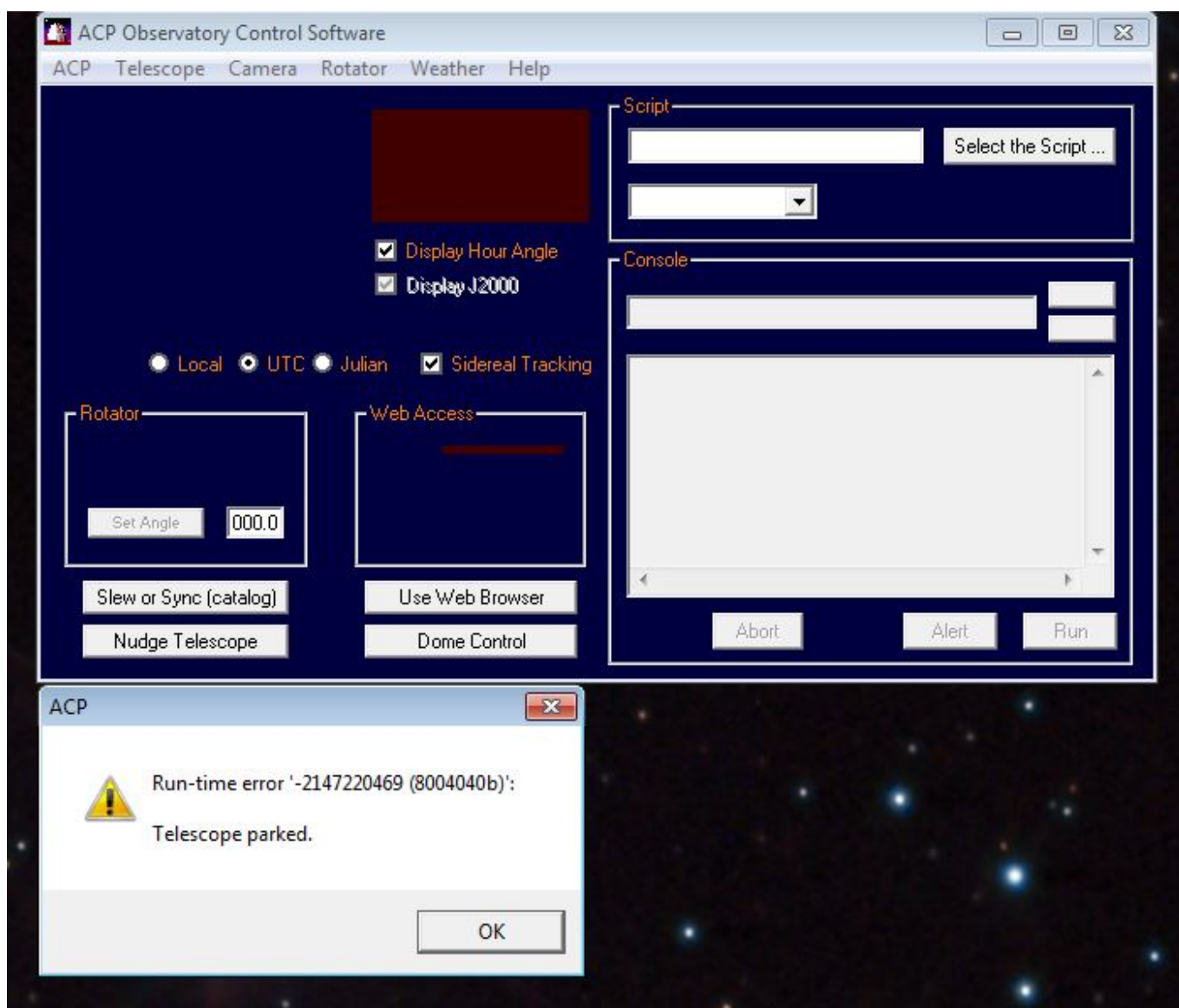
## Schulman Telescope Implementation of Park

Different software programs handle Park in different ways:

| Program   | Behavior   |
|-----------|--|
| LCOGT GUI | Park is a position only. Its state is asynchronous.  |
| ACP       | Park will set park variable (recorded by ACP and LCOGT) to “parked”, send to the defined park position and turn off tracking                 |
| TheSky    | Connects to telescope via “ASCOM Mount.” In this way, park is only a position. The behavior is like ACP if connected to a Bisque controller. |

## Fixing the problem

Below is the typical error encountered in ACP.



1. First clear the error by closing the dialog window. If ACP closes, restart ACP.
2. In ACP **Park** the telescope under the **Telescope** menu.
3. Wait approximately 10 seconds for telescope to settle and return.
4. In the **Telescope** menu select **Unpark**.
5. Point the telescope to the next target as normal.

In step **#2**, even if the telescope is already physically at the **Park** position, re-parking will synchronize the variable states of **Park** in the [LCOGT GUI](#) and ACP. Simply selecting **unpark** will not work.

## For More Information

You are welcome to see a video that explains this issue by watching the below:

<https://www.youtube.com/watch?v=v0Wx783Zc20>

From:

<https://lavinia.as.arizona.edu/~tscopewiki/> - **MOON**

Permanent link:

[https://lavinia.as.arizona.edu/~tscopewiki/doku.php?id=fixing\\_the\\_park\\_unpark\\_error&rev=1478358241](https://lavinia.as.arizona.edu/~tscopewiki/doku.php?id=fixing_the_park_unpark_error&rev=1478358241)

Last update: **2016/11/05 08:04**

