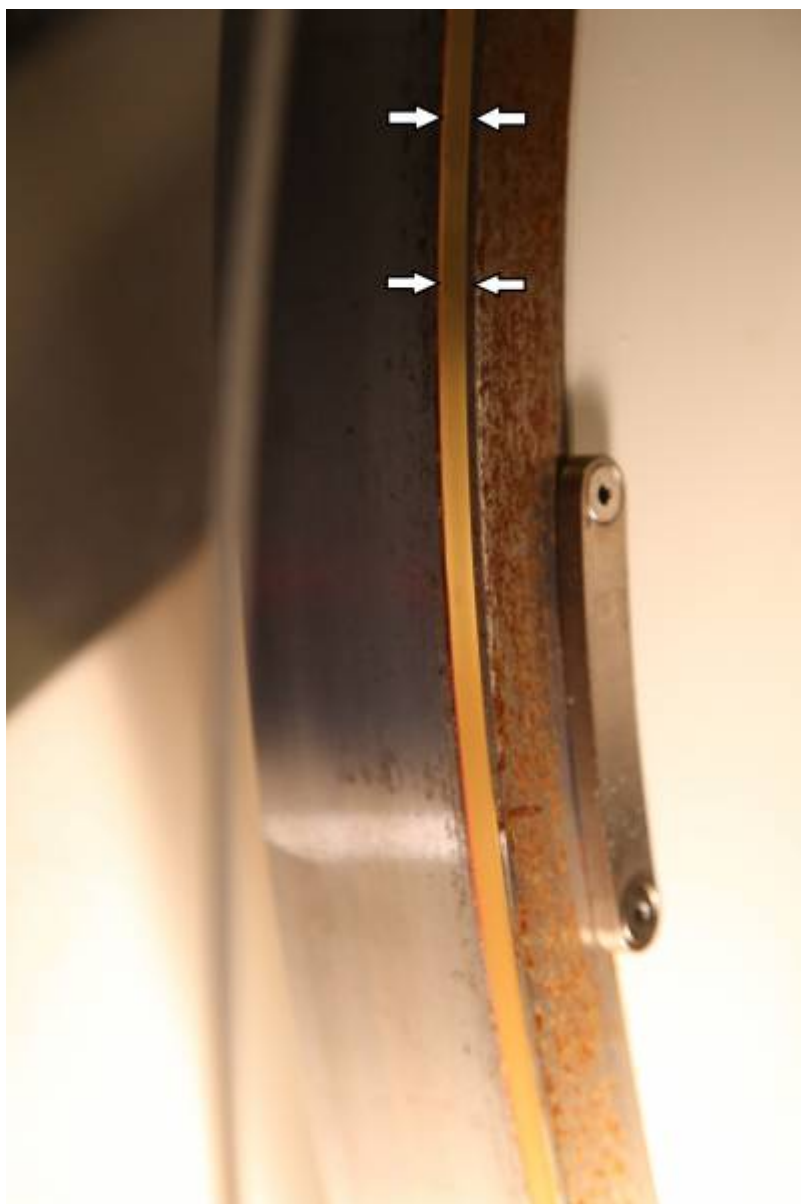


How the Optical Tape and Read Heads Work

The optical tapes on the axes of the Schulman Telescope are the most precious and delicate parts of the system. They should be protected at all times and maintained with great care. The [optical tape](#) and [read heads](#) are exposed on the RA axis for this system. A Plexiglas shield offers some protection for the tape from accidental collisions and debris. There does exist a cover designed for the RA axis; but it was determined that a darkened enclosure increases the instances of attracting moths to reside in this area and ultimately dirty the tape (Usually by their untimely demise by being pressed and extruded through the roller bearings). Leaving the tape exposed to light has minimized downtime due to moths by nearly 90%. This comes at a price. Condensation and other environmental effects do occasionally render parts of tape unreadable by the read heads.



Last update:

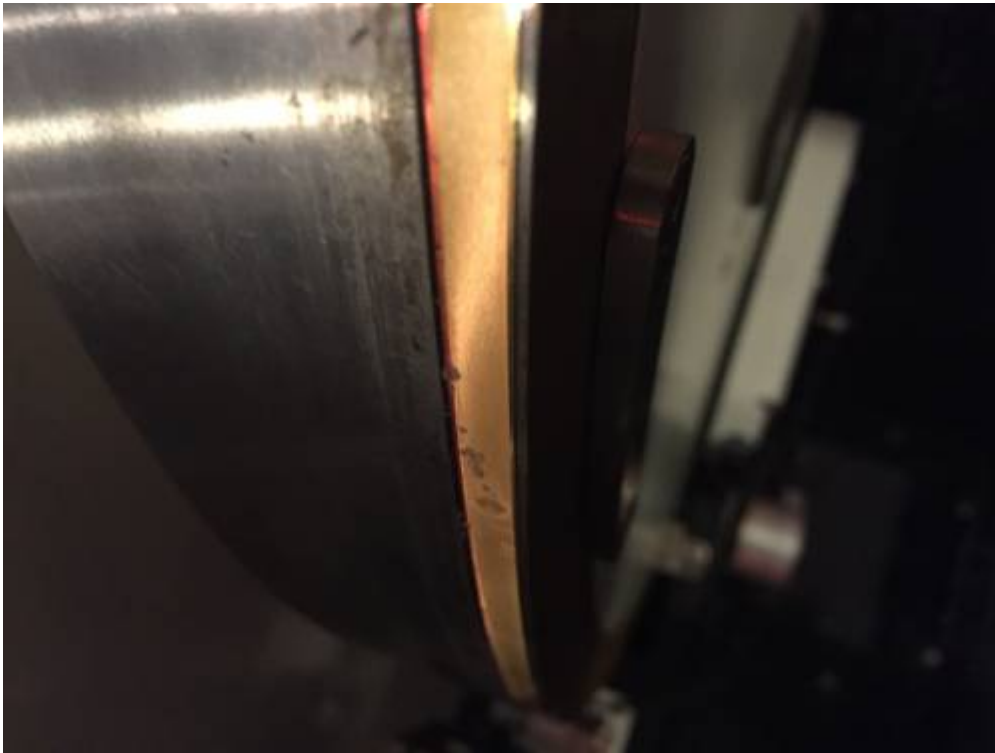
2016/11/27 cleaning_the_optical_tape https://lavinia.as.arizona.edu/~tscopewiki/doku.php?id=cleaning_the_optical_tape&rev=1480312008
22:46





The read heads for the RA axis are atop stalks that terminate very close to the surface of the optical tape. The tape needs to be both clean and aligned with the read head window in order for the reflected (IR) signal from the read head to be registered with good fidelity. There are two read heads which used to operate simultaneously in order to reduce eccentricity of the RA axis. However it was quickly determined that two operational read heads also double the failure events since either one can have an issue. In 2014 the system was converted to a single read head configuration. Currently the West read head is active. Should there be an issue with the West read head (or side of the tape) switching to the East read head is possible. Access the panel on the East side to swap the cables.

Behavior of Telescope with Optical Tape Blots



Should the read head encounter a blot or dark mark on the optical tape several different things can happen. If the mark is small (see several small blots in the picture above) the most common issue is a loss of counts. As the read head passes over the blot nothing will be recorded in terms of position. Of course the telescope has moved through the angle of the blot and so a pointing error will occur. A 1 centimeter (linear) blot can cause a pointing error of a degree or more. A 5 millimeter blot can certainly put objects out of the field of view. Thus there are a few things to note:

- If the pointing error is only in the RA axis and not Declination, a very good guess is that there is a blot on the RA optical tape.
- When moving through a blot an offset is introduced to create the pointing error. Pointing the telescope at the previous object (that was centered before the issue) and having it be centered again is another clue that the problem is with a blot on the optical tape. (The offset is zeroed out when it moves back through the blot coming from the opposite direction.)

Faults



If the blots are large enough or partially obscure the optical tape a drive fault may be triggered (see the smeared moth remains above). The drives might receive

From:

<https://lavinia.as.arizona.edu/~tscopewiki/> - **MOON**

Permanent link:

https://lavinia.as.arizona.edu/~tscopewiki/doku.php?id=cleaning_the_optical_tape&rev=1480312008

Last update: **2016/11/27 22:46**

