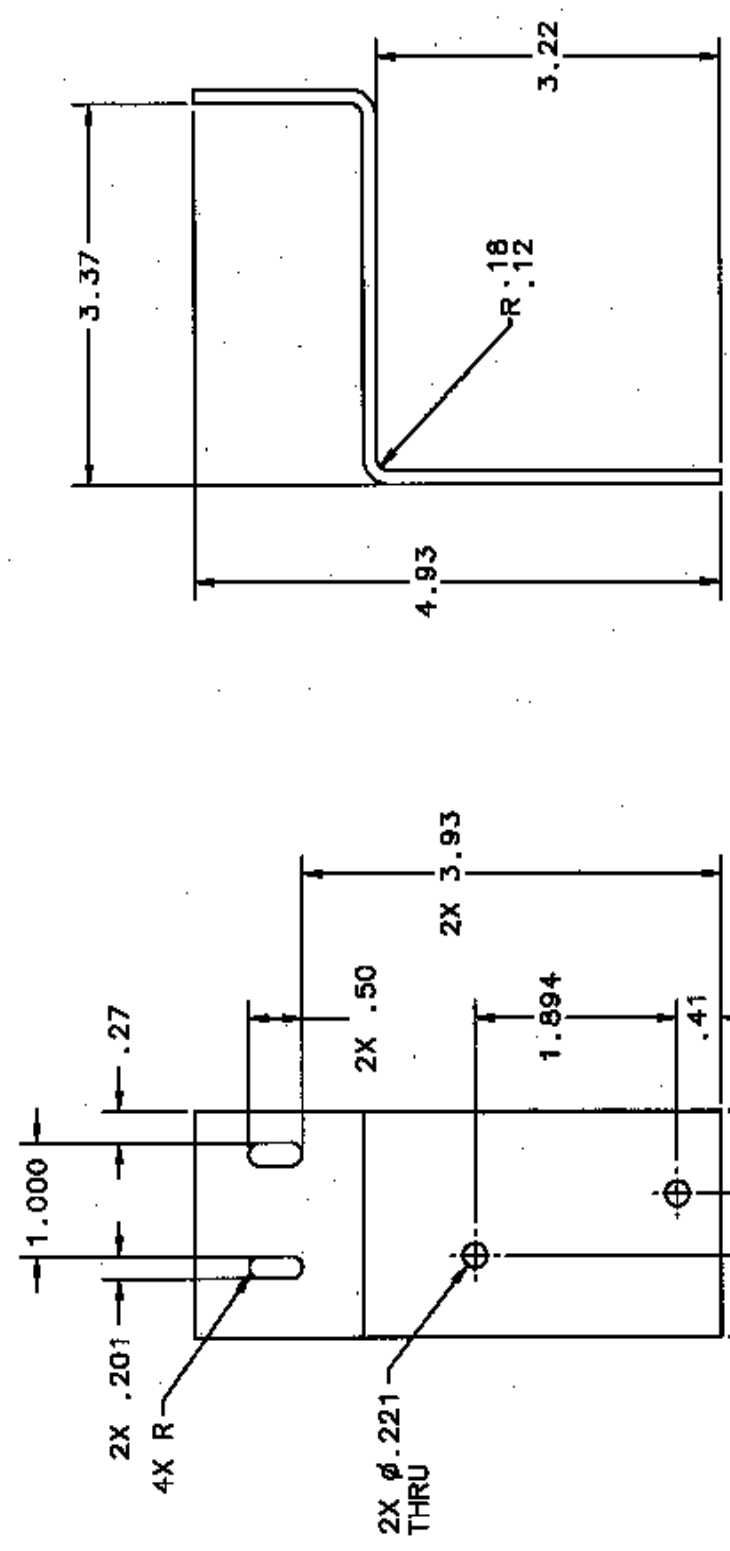
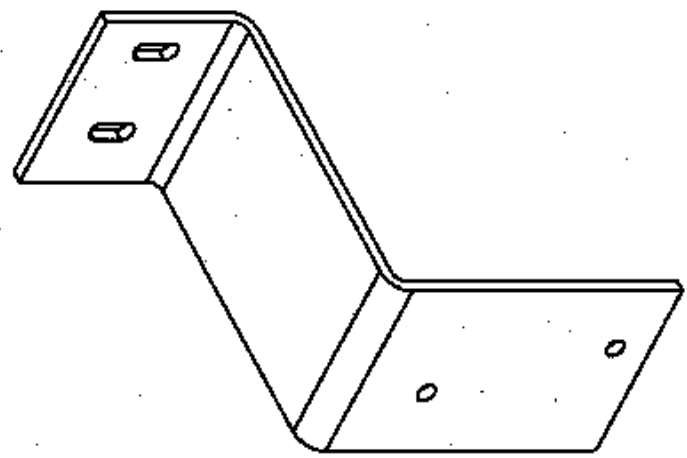


4 3 2 1

REVISIONS			
ZONE	LTR	DESCRIPTION	DATE
	1	INITIAL ISSUE	8/28/03



NOTES:

- ① MATERIAL: .12 THICK TYPE 410 OR 416 STAINLESS STEEL ANNEALED CONDITION.
- ② FINISH: VAPOR DEGREASE FOLLOWED BY PRIME AND FINISH COAT WITH:
 PRIMER: DEXTER CORPORATION 10-P4-2
 LEAD FREE EPOXY PRIMER,
 BMS10-11 TYPE 1, .005 TO .007 THICK
 FINISH COAT: DEXTER CORPORATION 463-3-B FLAT BLACK EPOXY TOP COAT TO .003 THICK.

RESERVED
 ENGINEERING DATA
 UNDER DCA CONTROL

REMOVE BURRS AND BREAK SHARP EDGES UNLESS OTHERWISE SPECIFIED DIMENSIONS ARE IN INCHES	DR. L. HORN DATE 2/28/03	CHK. DIE DATE 2/28/03	SMITHSONIAN ASTROPHYSICAL OBSERVATORY CENTRAL ENGINEERING
TOLERANCES ON DIMENSIONS Holes ± .02 Angles ± .20° FINISH: F/INI	DR. H. HORN DATE 2/28/03	CHK. DIE DATE 2/28/03	LINK, CARRIER BRACKET
UNITS: A F/INI	DR. H. HORN DATE 2/28/03	CHK. DIE DATE 2/28/03	SIZE CODE IDENT NO. DWP NO. REV
NOT ASBY WFS-600	DR. H. HORN DATE 2/28/03	CHK. DIE DATE 2/28/03	C 50944 WFS2-3031 1
	DR. H. HORN DATE 2/28/03	CHK. DIE DATE 2/28/03	SCALE 1/1 IDEAS 8m2 SHEET 1 of 1

4 3 2 1