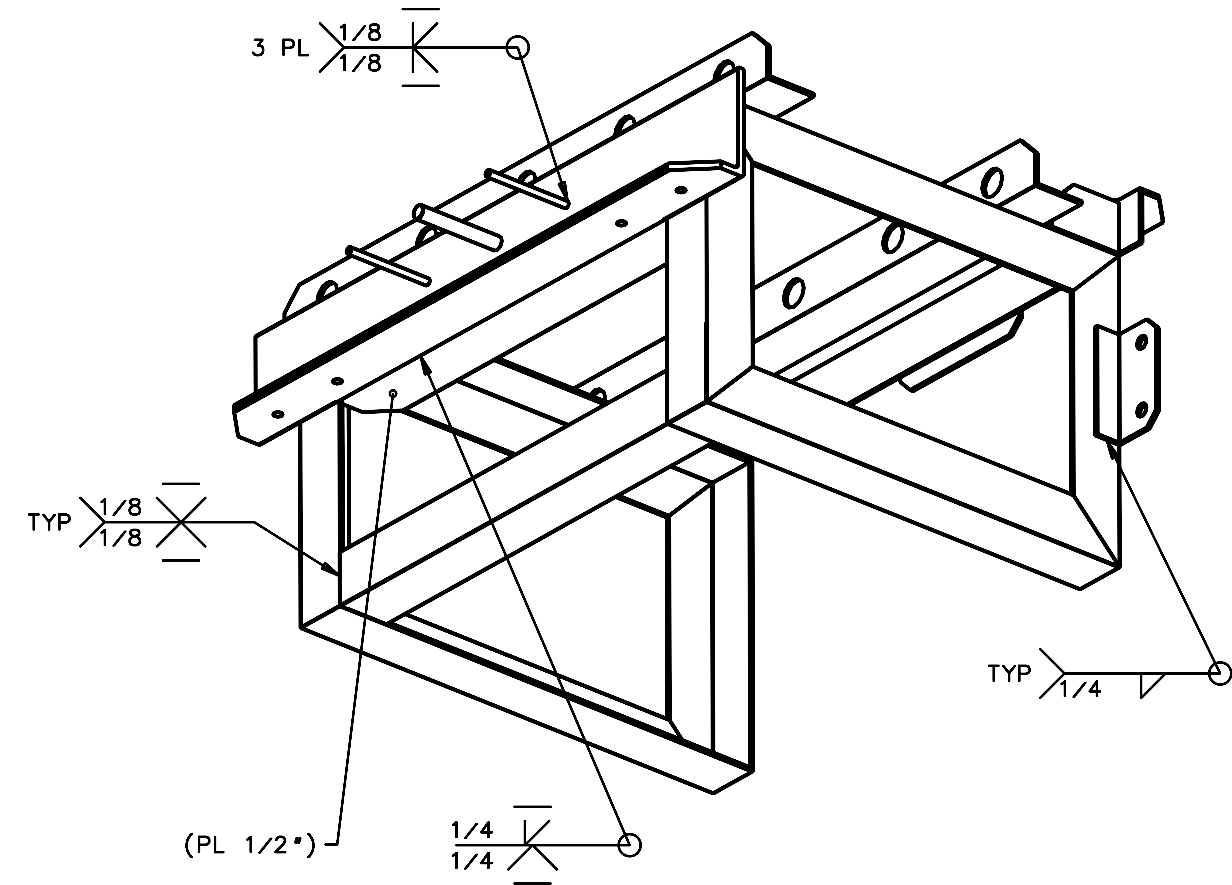
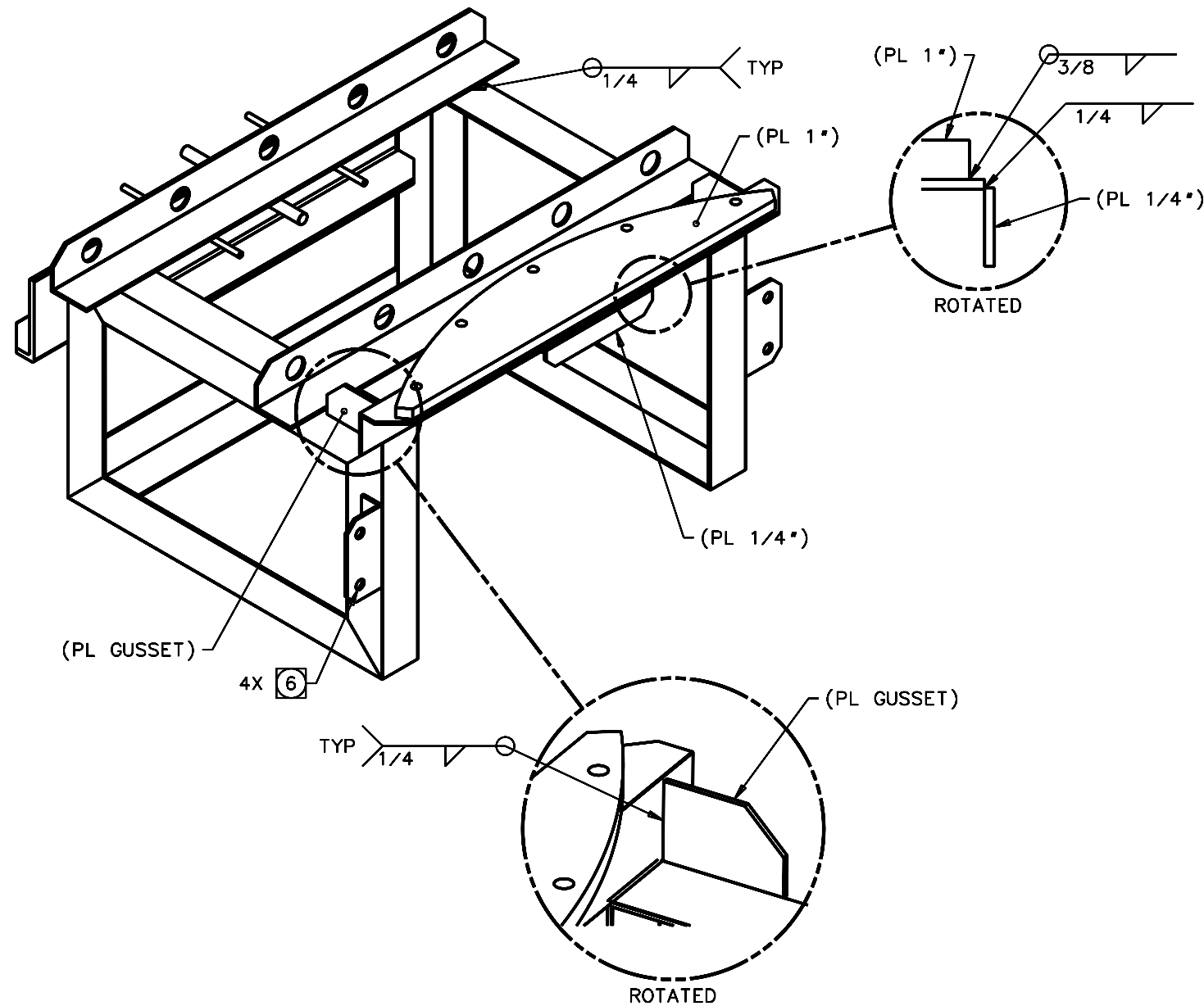


REVISIONS				
LTR	DESCRIPTION	DATE	REVISED BY	APPROVED
A	INITIAL RELEASE	4/20/05	R. NAGY	W. DAVISON



ISO VIEWS

SCALE NTS

ADDITIONAL FABRICATION VIEWS ON SHTs 2 THRU 7

NOTES:

- 1 DIMENSIONS ARE FRACTIONAL WITH A TOLERANCE OF $\pm 1/16"$.
2. BREAK SHARP EDGES & DEBURR HOLES.
3. MACHINED SURFACE FINISH TO BE 125 RMS OR BETTER.
- 4 ALL SURFACES ARE TO BE PRIMED WITH TWO (2) COATS OF RED OXIDE PRIMER (RUST-OLEUM #7669 OR EQUIVALENT) & THEN PAINTED WITH TWO (2) COATS OF ALKYD ENAMEL GLOSS WHITE (KELGARD #1700-061 OR EQUIVALENT).
- 5 IF REQUIRED AFTER PAINTING, DIE "CHASE" THREADED RODS SO A 1/2-13 NUT FREELY SCREWS ON.
- 6 NOTED HOLES WILL BE USED FOR MATCH DRILLING AS SPECIFIED ON 14522 FRAME WELDMENT & COUNTERWEIGHT ASSEMBLY, NOTE 1.

DO NOT SCALE DRAWING		THIS DRAWING CREATED IN:		Steward Observatory, University of Arizona	
INTERPRET DIMENSIONS AND TOLERANCES IN ACCORDANCE WITH ASME Y14.5M-94		ACAD <input type="checkbox"/>	MECH <input type="checkbox"/>	IDEAS <input checked="" type="checkbox"/>	933 N. Cherry Avenue, Tucson, AZ 85721 (520)621-7659
TOLERANCES UNLESS OTHERWISE SPECIFIED		DESIGNED BY: D. DEAN		DATE: 1/2/05	CATEGORY: MMT
LINEAR: .XX : 1		DRAWN BY: D. DEAN/R. NAGY		DATE: 4/8/05	PROJECT: MAESTRO
ANGULAR: .XXX : 1		CHECKED BY: T. HOPPER		DATE: 4/13/05	TITLE: CART COUNTERWEIGHT WELDMENT
DIAMETRICAL: .XXX : 1		APPROVED BY: J. BECHTOLD		DATE: 4/20/05	
SEE SPEC S-002		APPROVED BY: R. WARNER		DATE: 4/20/05	
MATERIAL: ASTM A36 STEEL		14523	MMT	APPROVED:	PLOT SIZE SCALE: D -
FINISH: 4		NEXT ASSY	USED ON	APPROVED:	DRAWING NUMBER: 14770
ASSEMBLY APPLICATION		CURRENT TIME/DATE/FILE LOCATION:		REVISION: A	
		DRAWING ARCHIVE LOCATION: http://davinci.as.arizona.edu/ccad/default.html		SHEET 1 OF 7	