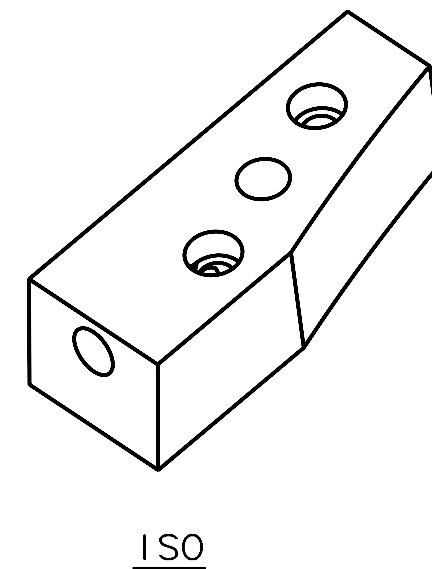
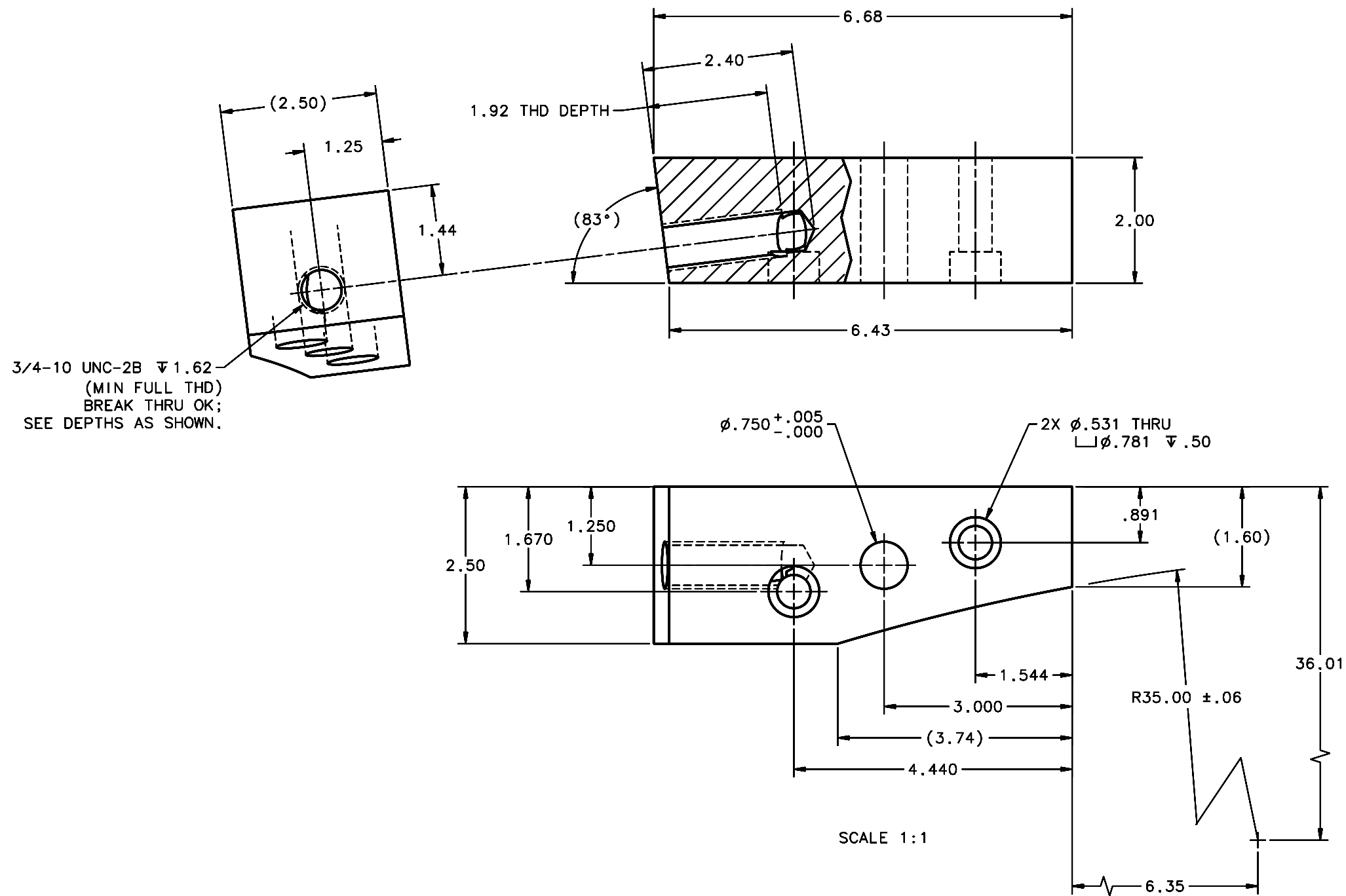


REVISIONS				
LTR	DESCRIPTION	DATE	REVISED BY	APPROVED
A	INITIAL RELEASE	11/17/05	R. NAGY	J. BECHTOLD



NOTES:

- BREAK SHARP EDGES & DEBURR.
- MACHINED SURFACE FINISH TO BE 125 RMS OR BETTER.
- MACHINED FILLETS TO BE R.015 MAX.
- ANODIZE PER MIL-A-8625, TYPE II, CLASS 2, BLACK.
- DIMENSIONS ARE BEFORE ANODIZE.
- QTY REQD: 1.

OPPOSITE HAND OF 16086

DO NOT SCALE DRAWING		THIS DRAWING CREATED IN:		Steward Observatory, University of Arizona	
INTERPRET DIMENSIONS AND TOLERANCES IN ACCORDANCE WITH ASME Y14.5M-94		ACAD <input type="checkbox"/>	MECH <input type="checkbox"/>	IDEAS <input checked="" type="checkbox"/>	933 N. Cherry Avenue, Tucson, AZ 85721 (520)621-7659
TOLERANCES UNLESS OTHERWISE SPECIFIED		DESIGNED BY: D. DEAN		DATE: 06/15/05	CATEGORY: MMT
LINEAR .XX = $\pm .02$		DRAWN BY: D. DEAN		10/17/05	PROJECT: MAESTRO
ANGULAR .XXX = $\pm .008$		CHECKED BY: R. NAGY		11/14/05	TITLE: TRUSS SPACE FRAME TO WELDMENT REAR BRACE BLOCK TYPE 2 LH
DIAMETRICAL SEE SPEC S-002		APPROVED: J. BECHTOLD		11/17/05	
MATERIAL 6061-T6 Al		16070	MMT-MAESTRO	APPROVED:	PLOT SIZE SCALE: D -
FINISH 4		NEXT ASSY	USED ON	APPROVED:	DRAWING NUMBER: 16085
ASSEMBLY APPLICATION		CURRENT TIME/DATE/FILE LOCATION:		DRAWING ARCHIVE LOCATION: <a href="http://dovinci.as.arizona.edu/ccad/default.html">http://dovinci.as.arizona.edu/ccad/default.html</a>	
					REVISION: A
					SHEET 1 OF 1