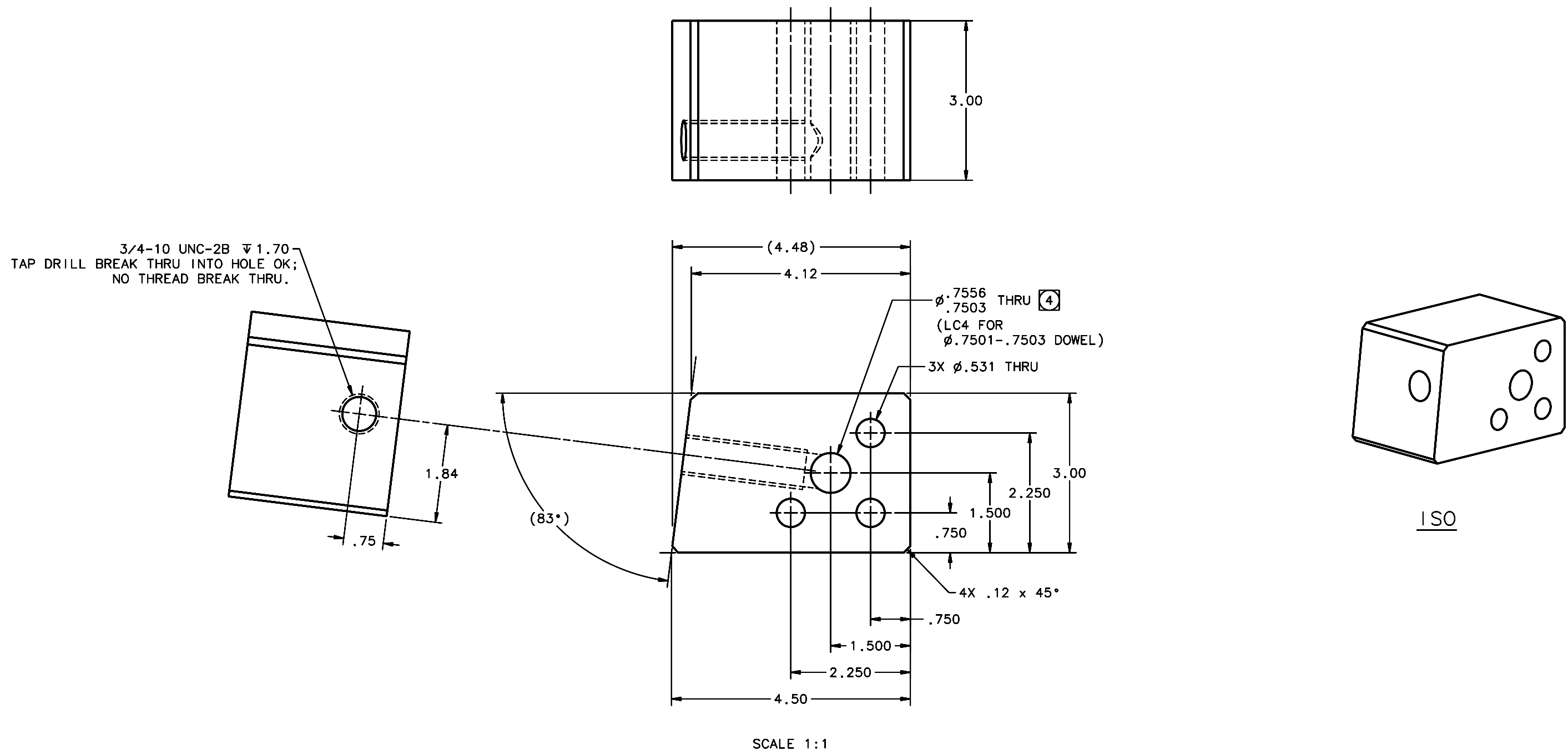


REVISIONS				
LTR	DESCRIPTION	DATE	REVISED BY	APPROVED
A	INITIAL RELEASE	11/17/05	R. NAGY	J. BECHTOLD



- NOTES:
- BREAK SHARP EDGES & DEBURR.
  - MACHINED SURFACE FINISH TO BE 125 RMS OR BETTER.
  - ANODIZE PER MIL-A-8625, TYPE II, CLASS 2, BLACK.
  - NOTED HOLE SIZE IS AFTER ANODIZE; ALL OTHER DIMENSIONS ARE BEFORE.
  - QTY REQD: 1.

OPPOSITE HAND OF 16083

DO NOT SCALE DRAWING		THIS DRAWING CREATED IN:		Steward Observatory, University of Arizona	
INTERPRET DIMENSIONS AND TOLERANCES IN ACCORDANCE WITH ASME Y14.5M-94		ACAD <input type="checkbox"/>	MECH <input type="checkbox"/>	IDEAS <input checked="" type="checkbox"/>	933 N. Cherry Avenue, Tucson, AZ 85721 (520)621-7659
TOLERANCES UNLESS OTHERWISE SPECIFIED		DESIGNED BY: D. DEAN	DATE: 08/16/05	CATEGORY: MMT	
LINEAR	ANGULAR	DRAWN BY: D. DEAN	10/19/05	PROJECT: MAESTRO	
.1 - NA	.1°	CHECKED BY: R. NAGY	11/14/05	TITLE: TRUSS SPACE FRAME TO WELDMENT REAR BRACE BLOCK TYPE 1 RH	
.1X - ±.02		APPROVED: J. BECHTOLD	11/17/05	DRAWING NUMBER: 16084	
.1XX - ±.008		APPROVED:		REVISION: A	
DIAMETRICAL SEE SPEC S-002		APPROVED:		PLOT SIZE SCALE: D -	
MATERIAL 6061-T6 Al		16070	MMT-MAESTRO	DRAWING NUMBER: 16084	
FINISH 3		NEXT ASSY	USED ON	REVISION: A	
ASSEMBLY APPLICATION		CURRENT TIME/DATE/FILE LOCATION:		SHEET 1 OF 1	
DRAWING ARCHIVE LOCATION: <a href="http://dovinci.as.arizona.edu/ccad/default.html">http://dovinci.as.arizona.edu/ccad/default.html</a>					