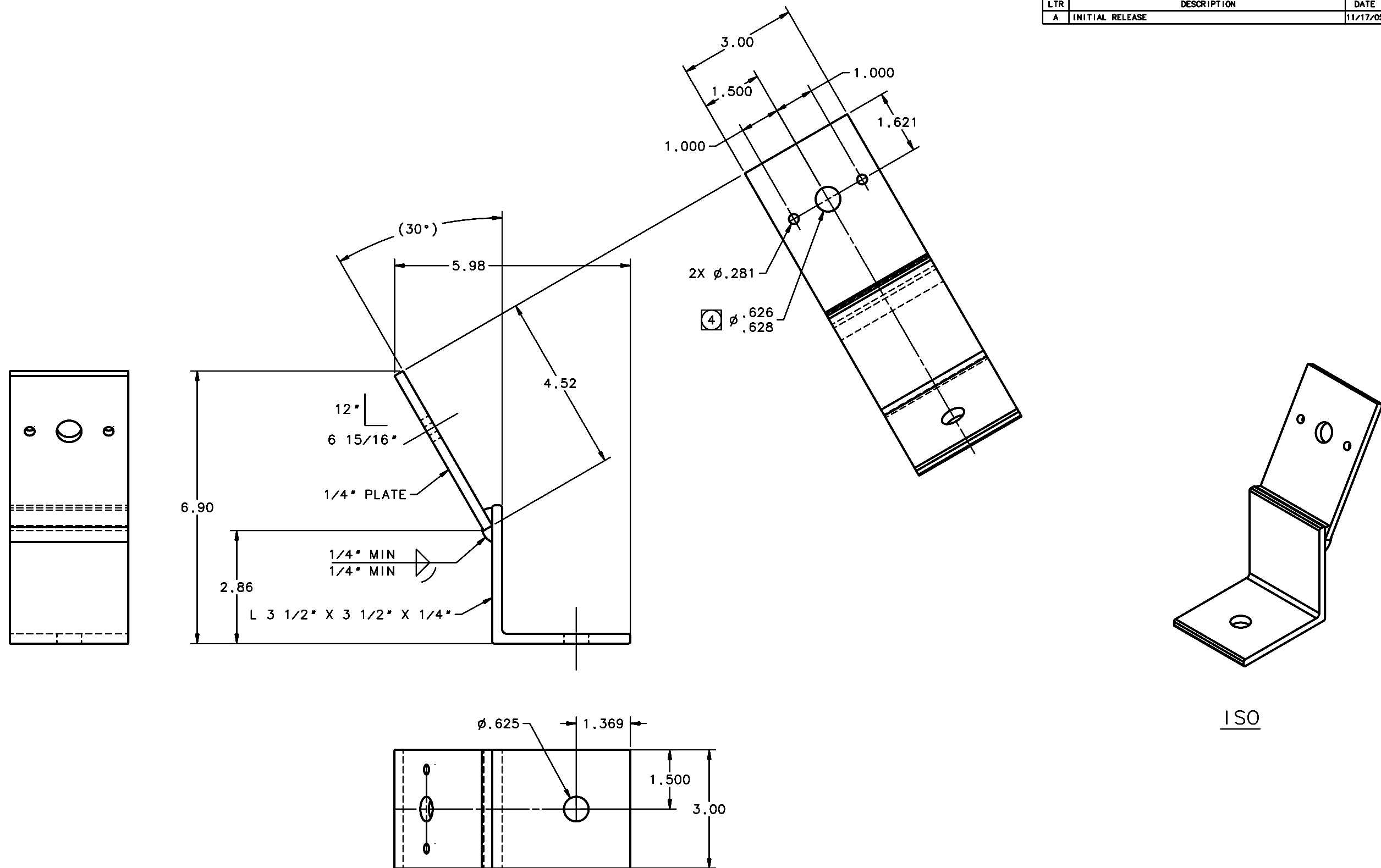


REVISIONS				
LTR	DESCRIPTION	DATE	REVISED BY	APPROVED
A	INITIAL RELEASE	11/17/05	R. NAGY	J. BECHTOLD



- NOTES:
- BREAK SHARP EDGES & DEBURR.
  - MACHINED SURFACE FINISH TO BE 125 RMS OR BETTER.
  - PRIME WITH TWO (2) COATS OF RED OXIDE PRIMER (RUST-OLEUM #7669 OR EQUIVALENT) & PAINT WITH TWO (2) COATS OF ALKYD ENAMEL GLOSS WHITE (KELGARD #1700-061 OR EQUIVALENT).
  - DO NOT PAINT NOTED HOLE.
  - QTY REQD: 8.

SCALE 3:4

DO NOT SCALE DRAWING INTERPRET DIMENSIONS AND TOLERANCES IN ACCORDANCE WITH ASME Y14.5M-94		THIS DRAWING CREATED IN: ACAD <input type="checkbox"/> MECH <input type="checkbox"/> IDEAS <input checked="" type="checkbox"/>		Steward Observatory, University of Arizona 933 N. Cherry Avenue, Tucson, AZ 85721 (520)621-7659	
TOLERANCES UNLESS OTHERWISE SPECIFIED LINEAR      ANGULAR .X      = NA      ±1° .XX      = ±.03 .XXX     = ±.008 DIAMETRICAL SEE SPEC S-002		DESIGNED BY: DAVID DEAN	DATE: 05/15/05	CATEGORY: MMT	
MATERIAL ASTM A36 STEEL		DRAWN BY: DAVID DEAN	09/27/05	PROJECT: MAESTRO	
FINISH <input checked="" type="checkbox"/>		CHECKED BY: R. NAGY	11/14/05	TITLE: TRUSS SPACE FRAME TO WELDMENT APEX FLEX CONNECTION TIE PLATE TYPE 2	
NEXT ASSY USED ON		APPROVED: J. BECHTOLD	11/17/05	PLOT SIZE SCALE: D -	
ASSEMBLY APPLICATION		APPROVED:		DRAWING NUMBER: 16061	REVISION: A
CURRENT TIME/DATE/FILE LOCATION: DRAWING ARCHIVE LOCATION: <a href="http://devinci.os.arizona.edu/acad/default.html">http://devinci.os.arizona.edu/acad/default.html</a>					