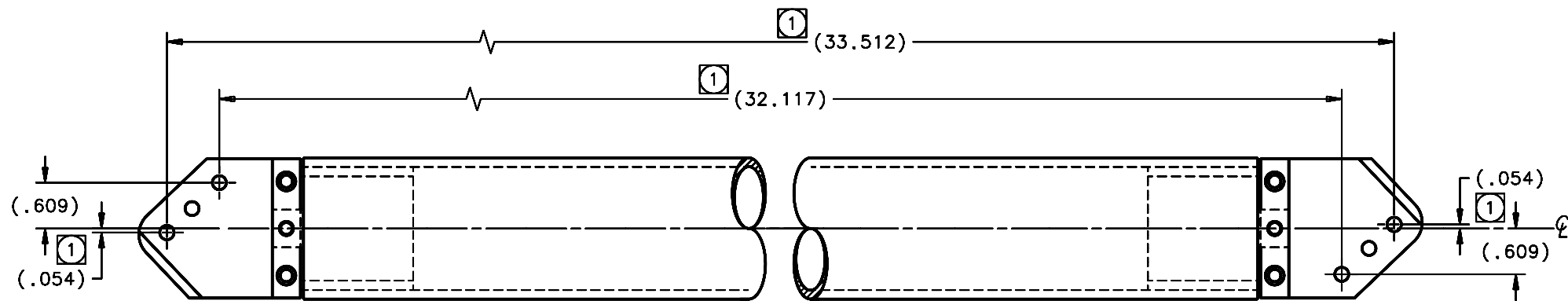
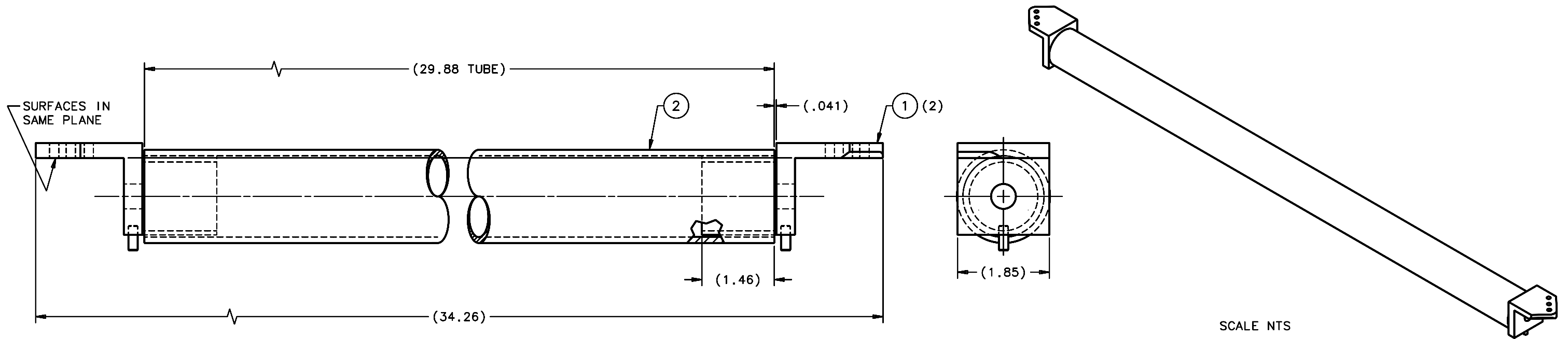


REVISIONS				
LTR	DESCRIPTION	DATE	REVISED BY	APPROVED
A	INITIAL RELEASE	12/7/05	R. NAGY	J. BECHTOLD



QTY PER ASSY	PART NUMBER	PART DESCRIPTION	MANUFACTURER of MAT'L SPEC	ITEM NO.
-3	-2	-1		
	AR	TBD	ADHESIVE	4
				3
1	13276-2	26.88" DIAGONAL BRACE TUBE		2
2	13243	*RL* END FITTING		1

LIST OF MATERIALS

Steward Observatory, University of Arizona
933 N. Cherry Avenue, Tucson, AZ 85721 (520)621-7659

DESIGNED BY: D. DEAN/R. NAGY	DATE: 9/16/05	CATEGORY: MMT
DRAWN BY: R. NAGY	DATE: 9/28/05	PROJECT: MAESTRO
CHECKED BY: J. BECHTOLD	DATE: 10/19/05	TITLE: TRUSS FRAME
APPROVED: J. BECHTOLD	DATE: 12/7/05	*RL* DIAGONAL BRACE
APPROVED: R. WARNER	DATE: 12/7/05	

DO NOT SCALE DRAWING	THIS DRAWING CREATED IN:
INTERPRET DIMENSIONS AND TOLERANCES IN ACCORDANCE WITH ASME Y14.5M-94	ACAD <input type="checkbox"/> MECH <input type="checkbox"/> IDEAS <input checked="" type="checkbox"/>
TOLERANCES UNLESS OTHERWISE SPECIFIED	
LINEAR	ANGULAR
.X - NA	NA
.XX - NA	
.XXX - NA	
DIAMETRICAL	
SEE SPEC S-002	
CHAMFER ARE IN ANGLES / DIMENSIONS IN 1:1 ARE METRIC	
MATERIAL	13234 MMT-MAESTRO
	NEXT ASSY USED ON
FINISH	ASSEMBLY APPLICATION

APPROVED:	PLOT SIZE SCALE:	DRAWING NUMBER:	REVISION:
	D -	16008	A
CURRENT TIME/DATE/FILE LOCATION:	DRAWING ARCHIVE LOCATION: http://dovinc1.es.arizona.edu/ccod/default.html		

NOTES:
 1 BOND ITEMS 1 & 2 TOGETHER USING ITEM 4 ADHESIVE AS REQUIRED. FIXTURE AS REQUIRED TO HOLD IN PLACE DURING CURING.
 2. QTY REQD: 1.