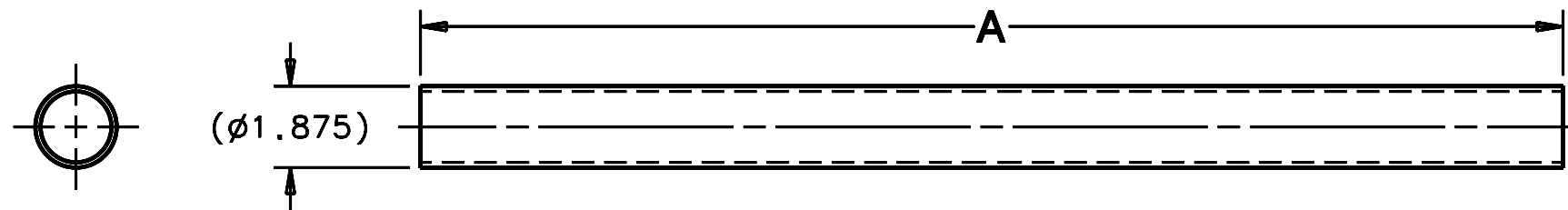


REVISIONS				
LTR	DESCRIPTION	DATE	REVISED BY	APPROVED
A	INITIAL RELEASE	10/19/05	R. NAGY	J. BECHTOLD



**-1 SHOWN**  
SCALE 1:4

DASH NO.	A
-1	26.38 26.25
-2	29.88 29.76

NOTES:

- 1 MATERIAL: HYBRID/FIBERGLASS CARBON/EPOXY TUBING, 1.875 (+.000/-.015) O.D. x 1.635 (+.000/-.005) I.D. (.1125-.1225 W), ADVANCE COMPOSITES, INC. #TUBE 1.875x.
2. BREAK SHARP EDGES & DEBURR.
3. QTY REQUIRED:  
-1: 8.  
-2: 2.

	13276-2	29.88" DIAGONAL BRACE TUBE
	13276-1	26.38" DIAGONAL BRACE TUBE
-3	-2	-1
QTY PER ASSY	PART NUMBER	PART DESCRIPTION
LIST OF MATERIALS		
DO NOT SCALE DRAWING		
INTERPRET DIMENSIONS AND TOLERANCES IN ACCORDANCE WITH ASME Y14.5M-94		
ACAD <input type="checkbox"/>	MECH <input type="checkbox"/>	IDEAS <input checked="" type="checkbox"/>
TOLERANCES UNLESS OTHERWISE SPECIFIED LINEAR                      ANGULAR .1       = NA                      ± 1° .XX      = ±.06 .XXX     = NA DIAMETRICAL SEE SPEC S-002		
THIS DRAWING CREATED IN: ACAD <input type="checkbox"/> MECH <input type="checkbox"/> IDEAS <input checked="" type="checkbox"/>		
Steward Observatory, University of Arizona 933 N. Cherry Avenue, Tucson, AZ 85721 (520)621-7659		
DESIGNED BY: D. DEAN	DATE: 9/3/03	CATEGORY: MMT
DRAWN BY: R. NAGY	10/13/03	PROJECT: MAESTRO
CHECKED BY: J. BECHTOLD	10/19/05	TITLE: TRUSS SPACE FRAME DIAGONAL BRACE TUBE
APPROVED: J. BECHTOLD	10/19/05	
APPROVED: R. WARNER	10/19/05	
APPROVED:		
APPROVED:		
MATERIAL		
<b>1</b>		
FINISH		
NONE		
ASSEMBLY APPLICATION		
CURRENT TIME/DATE/FILE LOCATION:		
DRAWING ARCHIVE LOCATION: <a href="http://davinci.es.orizona.edu/ecad/default.html">http://davinci.es.orizona.edu/ecad/default.html</a>		
PLOT SIZE	SCALE:	DRAWING NUMBER:
B	-	13276
REVISION:		
A		
SHEET 1 OF 1		