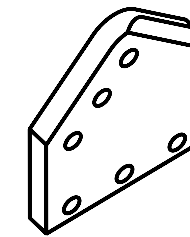
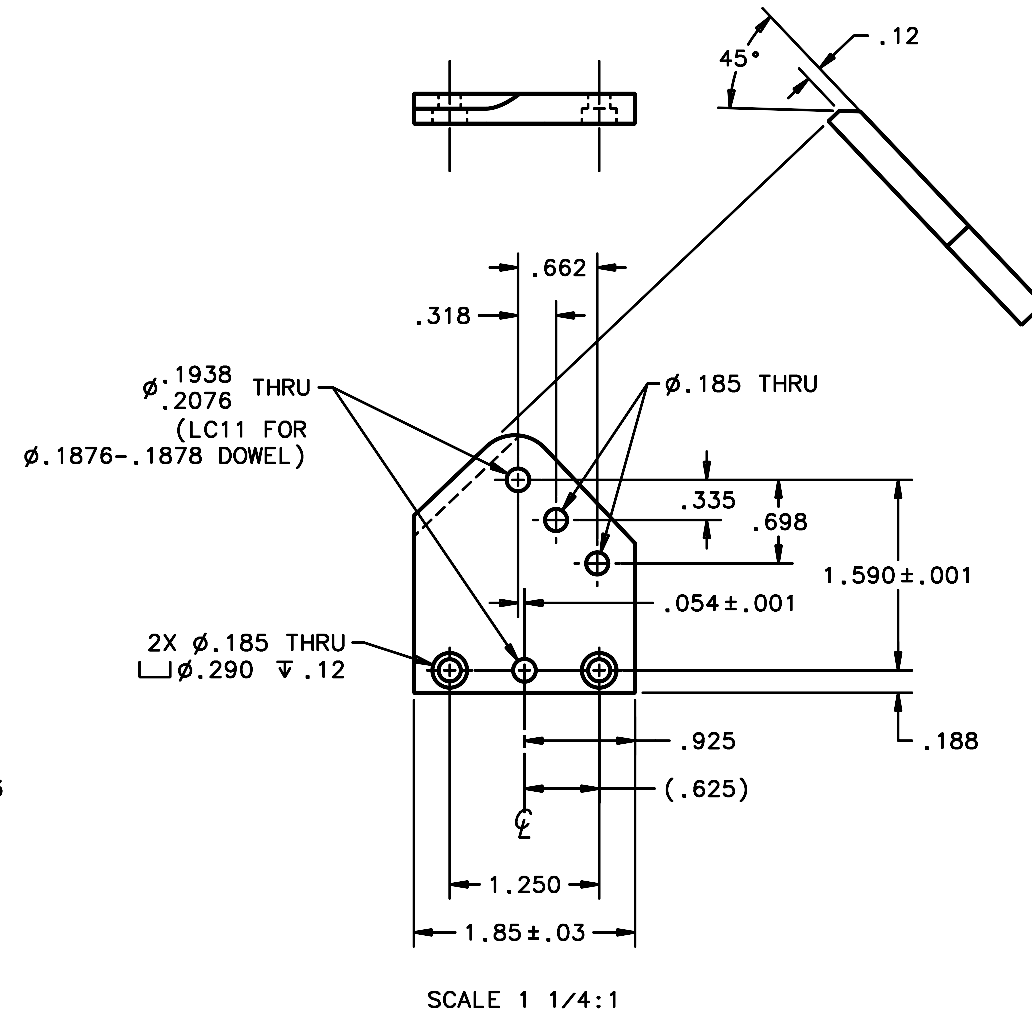
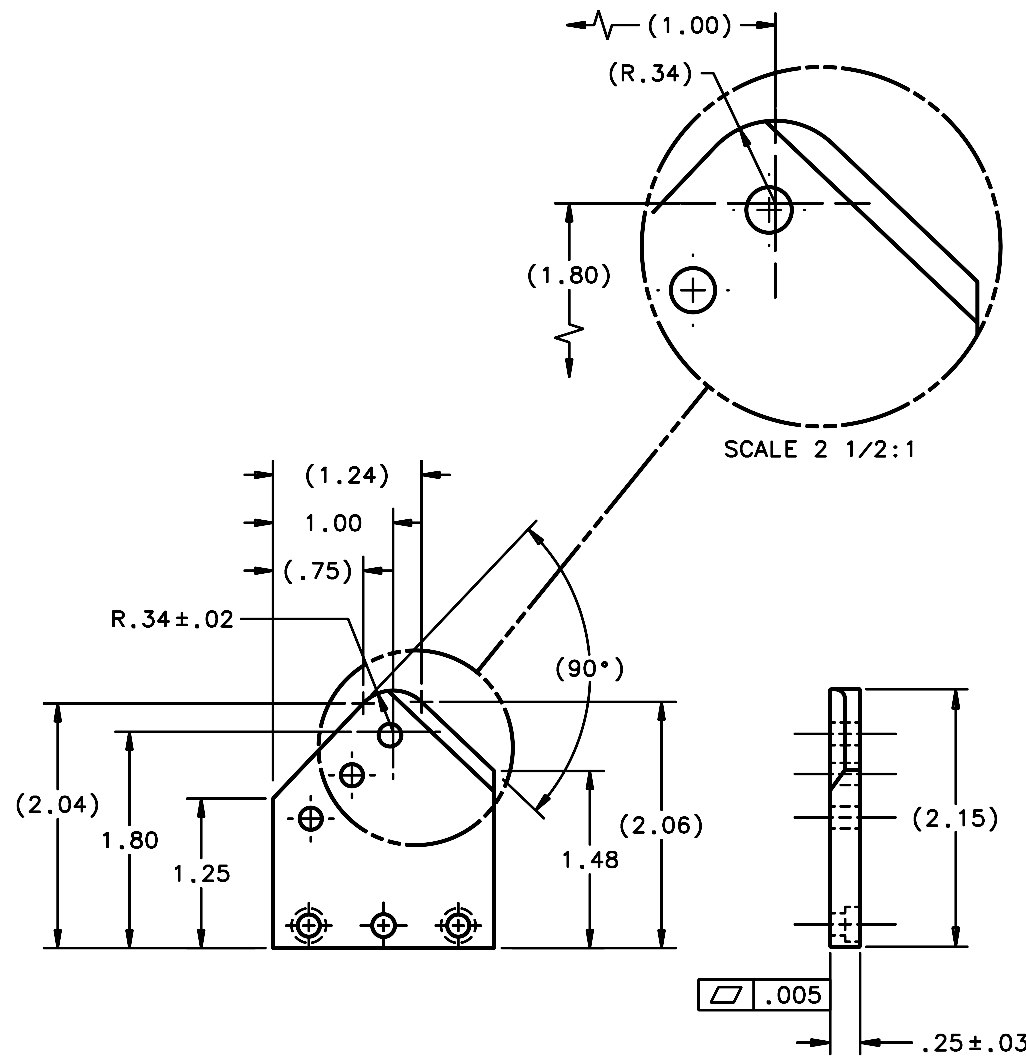


REVISIONS				
LTR	DESCRIPTION	DATE	REVISED BY	APPROVED
A	INITIAL RELEASE	10/19/05	R. NAGY	J. BECHTOLD



SCALE NTS

NOTES:

- BREAK SHARP EDGES & DEBURR.
- MACHINED SURFACE FINISH TO BE 125 RMS OR BETTER.
- MACHINED FILLETS TO BE .015 MAX.
- ANODIZE PER MIL-A-8625, TYPE II, CLASS 2, BLACK.
- DIMENSIONS ARE BEFORE ANODIZING.
- QTY REQD: 2.

OPPOSITE HAND OF 13242

DO NOT SCALE DRAWING INTERPRET DIMENSIONS AND TOLERANCES IN ACCORDANCE WITH ASME Y14.5M-94		THIS DRAWING CREATED IN: ACAD <input type="checkbox"/> MECH <input type="checkbox"/> IDEAS <input checked="" type="checkbox"/>		Steward Observatory, University of Arizona 933 N. Cherry Avenue, Tucson, AZ 85721 (520)621-7659	
TOLERANCES UNLESS OTHERWISE SPECIFIED LINEAR .X = NA .XX = ±.01 .XXX = ±.005 ANGULAR ±1° DIAMETRICAL SEE SPEC S-002		DESIGNED BY: D. DEAN	DATE: 9/3/03	CATEGORY: MMT	
DIMENSIONS ARE IN INCHES / DIMENSIONS IN 1:1 ARE METRIC		DRAWN BY: R. NAGY	7/28/05	PROJECT: MAESTRO	
MATERIAL 6061-T6 AI		CHECKED BY: J. BECHTOLD	10/19/05	TITLE: TRUSS SPACE FRAME DIAGONAL BRACE "RL" END FITTING PLATE	
FINISH 4		APPROVED: R. WARNER	10/19/05	PLOT SIZE SCALE: D -	
ASSEMBLY APPLICATION		APPROVED:		DRAWING NUMBER: 13244	REVISION: A
CURRENT TIME/DATE/FILE LOCATION:				SHEET 1 OF 1	
DRAWING ARCHIVE LOCATION: http://dovinci.as.arizona.edu/ocod/default.html					