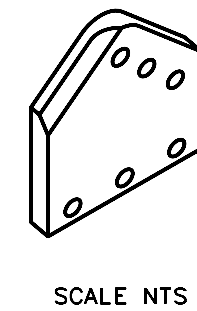
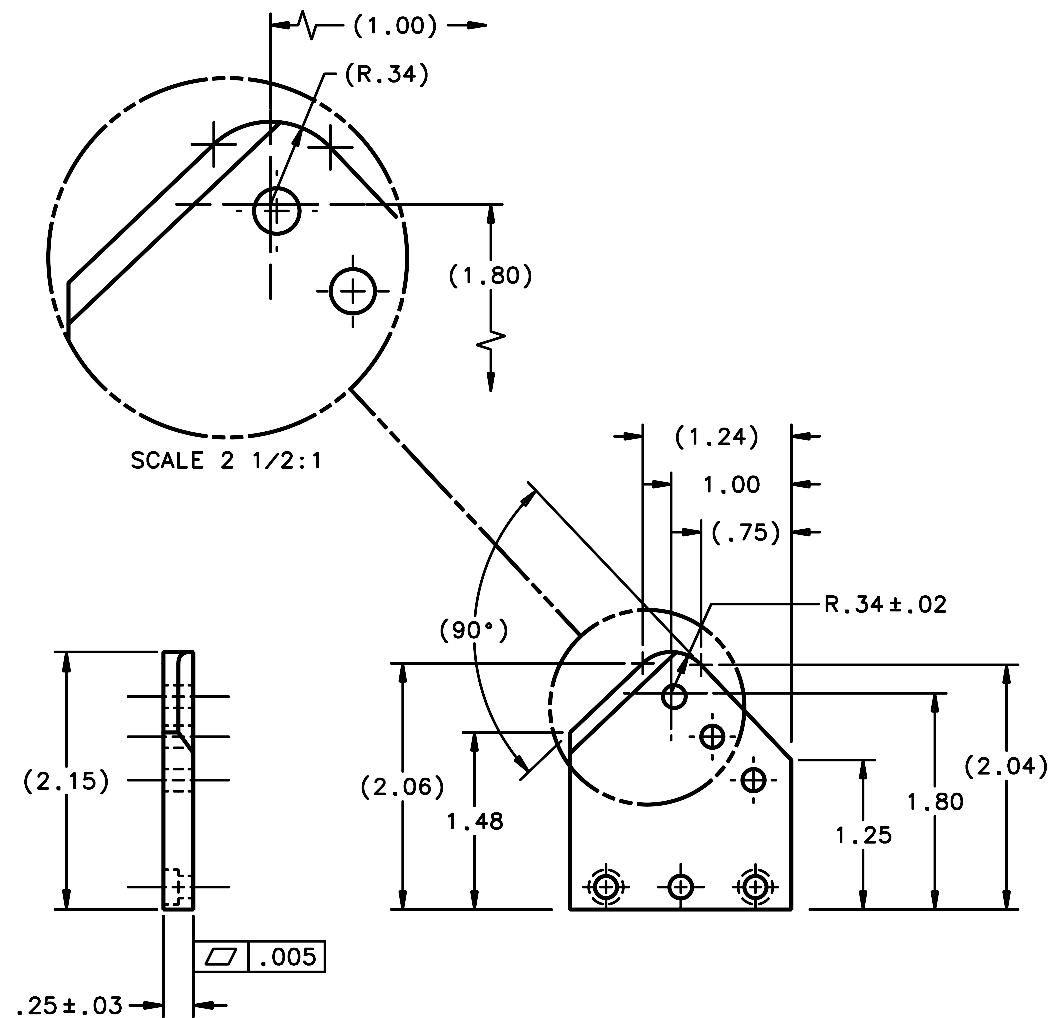
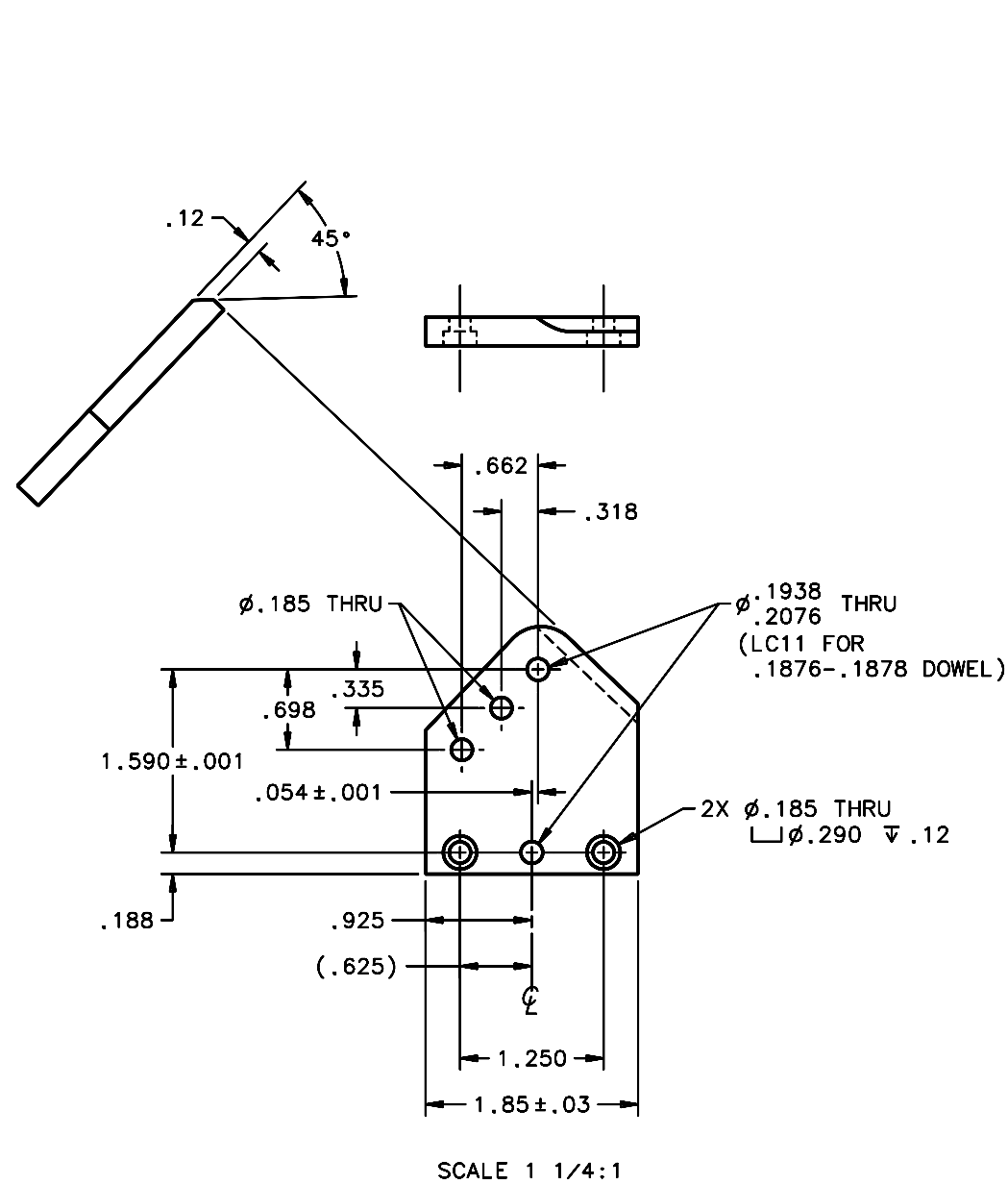


| REVISIONS |                 |          |            |             |
|-----------|-----------------|----------|------------|-------------|
| LTR       | DESCRIPTION     | DATE     | REVISED BY | APPROVED    |
| A         | INITIAL RELEASE | 10/19/05 | R. NAGY    | J. BECHTOLD |



NOTES:

- BREAK SHARP EDGES & DEBURR.
- MACHINED SURFACE FINISH TO BE 125 RMS OR BETTER.
- MACHUNED FILLETS TO BE .015 MAX.
- ANODIZE PER MIL-A-8625, TYPE II, CLASS 2, BLACK.
- DIMENSIONS ARE BEFORE ANODIZING.
- QTY REQD: 2.

OPPOSITE HAND OF 13244

|   |  |   |  |  |  |
|---|--|---|--|--|--|
| DO NOT SCALE DRAWING<br>INTERPRET DIMENSIONS AND TOLERANCES IN ACCORDANCE WITH ASME Y14.5M-94                                 |  | THIS DRAWING CREATED IN:<br>ACAD <input type="checkbox"/> MECH <input type="checkbox"/> IDEAS <input checked="" type="checkbox"/> |  | Steward Observatory, University of Arizona<br>933 N. Cherry Avenue, Tucson, AZ 85721 (520)621-7659 |  |
| TOLERANCES UNLESS OTHERWISE SPECIFIED<br>LINEAR .X = NA .XX = ±.01 .XXX = ±.005<br>ANGULAR ± 1°<br>DIAMETRICAL SEE SPEC S-002 |  | DESIGNED BY: D. DEAN<br>DATE: 9/3/03<br>CATEGORY: MMT   |  | DRAWN BY: R. NAGY<br>DATE: 7/28/05<br>PROJECT: MAESTRO   |  |
| MATERIAL<br>6061-T6 Al  |  | CHECKED BY: J. BECHTOLD<br>DATE: 10/19/05<br>TITLED: TRUSS SPACE FRAME<br>DIAGONAL BRACE<br>"LL" END FITTING PLATE                |  | APPROVED BY: J. BECHTOLD<br>DATE: 10/19/05   |  |
| FINISH 4  |  | APPROVED BY: R. WARNER<br>DATE: 10/19/05  |  | APPROVED BY: [Blank]   |  |
| NEXT ASSY USED ON   |  | PLOT SIZE SCALE: D -  |  | DRAWING NUMBER: 13242  |  |
| ASSEMBLY APPLICATION  |  | CURRENT TIME/DATE/FILE LOCATION:  |  | REVISION: A  |  |
|   |  | DRAWING ARCHIVE LOCATION: http://dovinc1.es.arizona.edu/ocod/default.html   |  | SHEET 1 OF 1   |  |