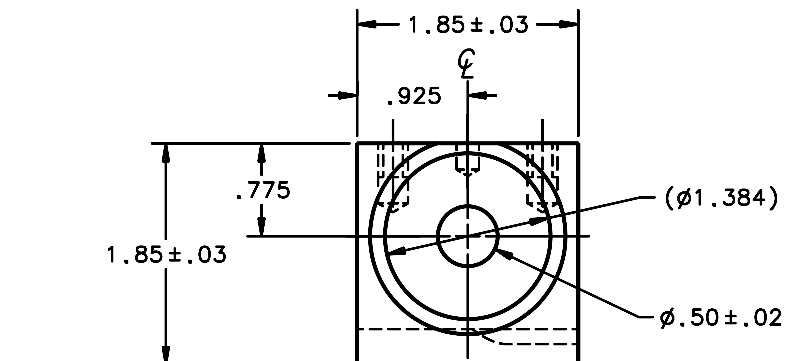
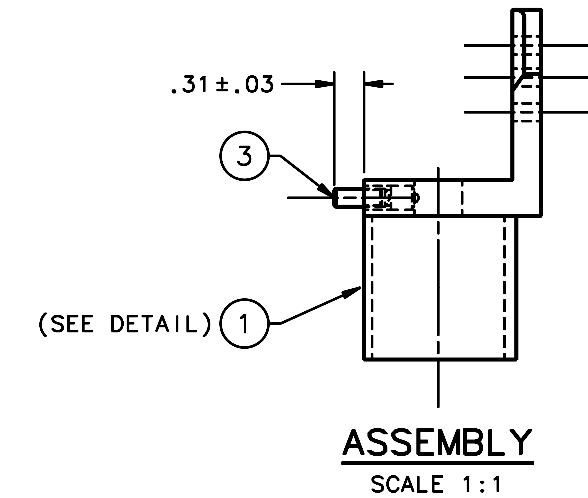
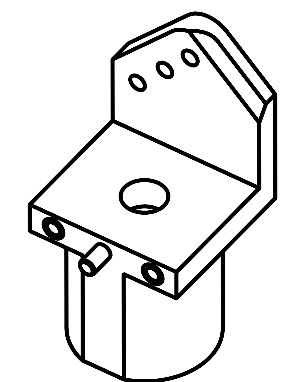
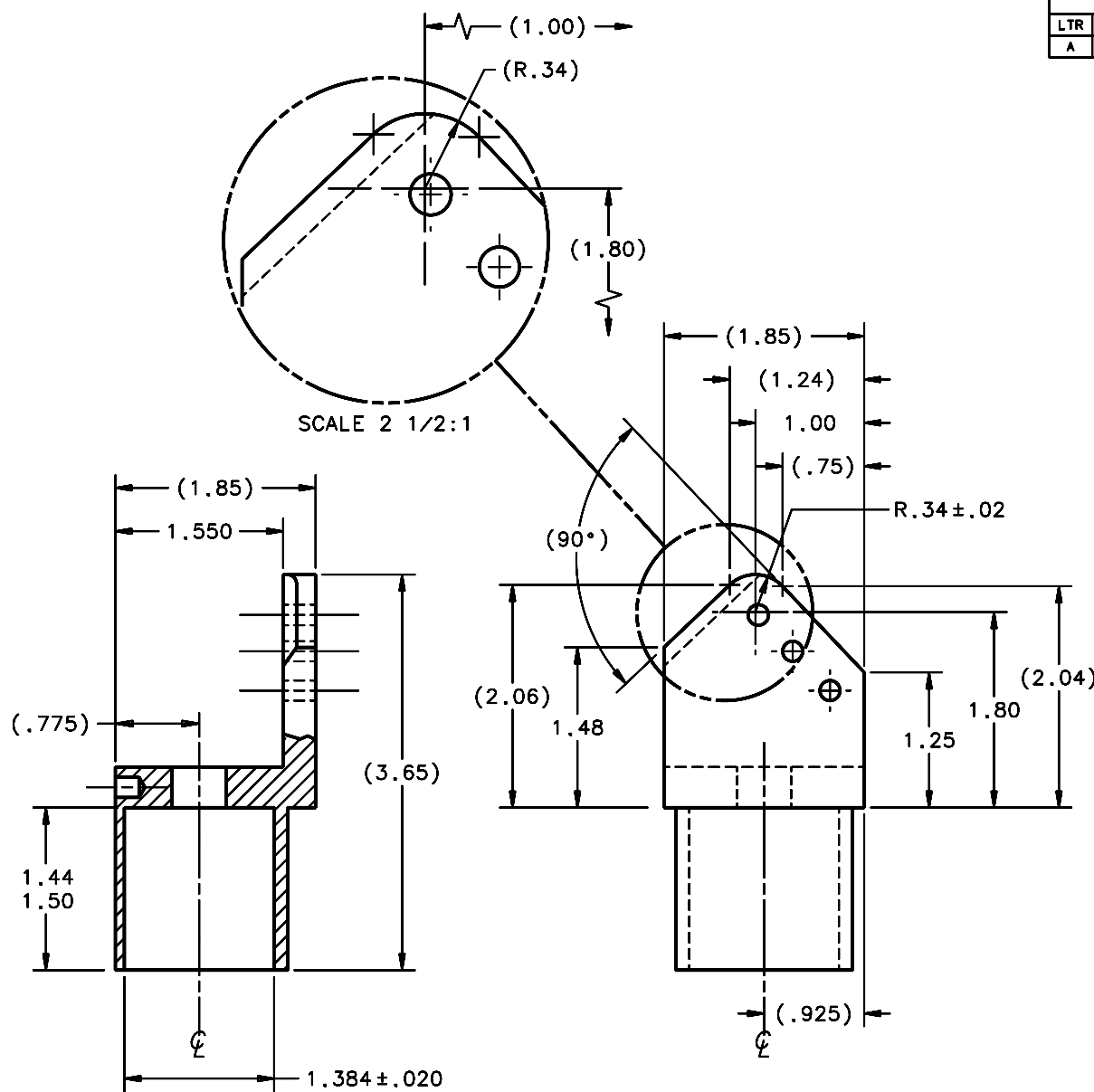
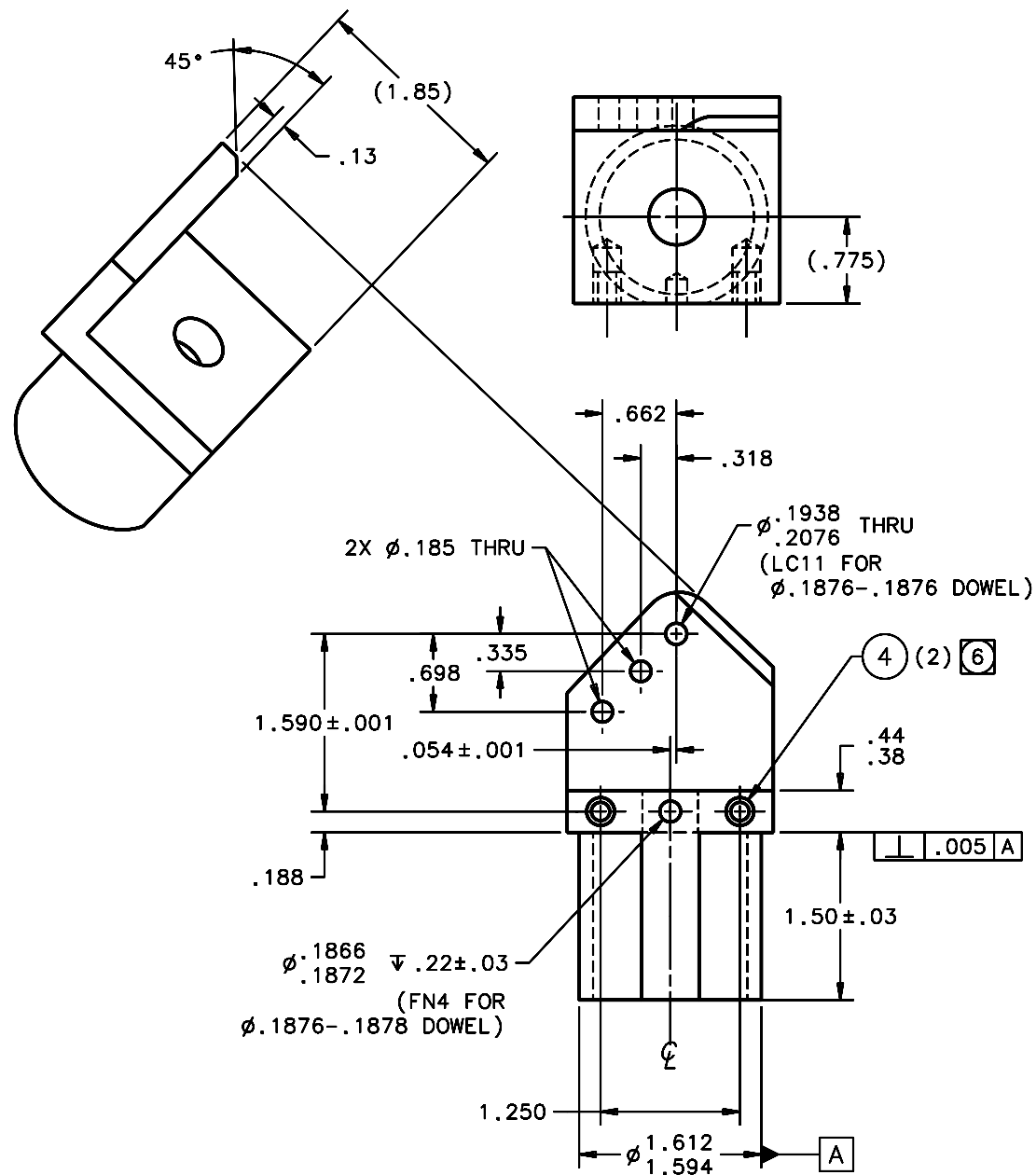


REVISIONS				
LTR	DESCRIPTION	DATE	REVISED BY	APPROVED
A	INITIAL RELEASE	10/19/05	R. NAGY	J. BECHTOLD



① "LL" END FITTING
SCALE 1 1/4:1

OPPOSITE HAND OF 13243

QTY PER ASSY	QTY PER ASSY	PART NUMBER	PART DESCRIPTION	MANUFACTURER OF MAT'L SPEC	ITEM NO.
2	94165A423	INSERT, THREADED OD (1/4-28), EXT NYLON LOCK, 8-32 x 9/32 LG, 18-8 SS	McMASTER-CARR	4	
1	90145A505	PIN, DOWEL, STANDARD, UNHARDENED, φ3/16 (.1876-.1878) x 1/2 LG, 18-8 SS	McMASTER-CARR	3	
1	13241-5	"LL" END FITTING		1	

- NOTES:
- BREAK SHARP EDGES & DEBURR.
 - MACHINED SURFACE FINISH TO BE 125 RMS OR BETTER.
 - MACHINED FILLETS TO BE .015 MAX.
 - ANODIZE PER MIL-A-8625, TYPE II, CLASS 2 - BLACK.
 - DIMENSIONS ARE BEFORE ANODIZING.
 - INSTALL INSERTS PER MANUFACTURER'S DIRECTIONS. FOR THIS APPLICATION, INSERT TAP DRILL MUST BE .50 MIN DEEP.
 - QTY REQD: 2.

DO NOT SCALE DRAWING INTERPRET DIMENSIONS AND TOLERANCES IN ACCORDANCE WITH ASME Y14.5M-94		THIS DRAWING CREATED IN: ACAD <input type="checkbox"/> MECH <input type="checkbox"/> IDEAS <input checked="" type="checkbox"/>		Steward Observatory, University of Arizona 933 N. Cherry Avenue, Tucson, AZ 85721 (520)621-7659	
TOLERANCES UNLESS OTHERWISE SPECIFIED LINEAR .XX = ±.01 .XXX = ±.005 ANGULAR ± 1° DIAMETRICAL SEE SPEC S-002		DESIGNED BY: D. DEAN	DATE: 9/3/03	CATEGORY: MMT	
DIMENSIONS ARE IN INCHES / DIMENSIONS IN 1 ARE METRIC		DRAWN BY: R. NAGY	7/26/05	PROJECT: MAESTRO	
MATERIAL 6061-T6 Al		CHECKED BY: J. BECHTOLD	10/19/05	TITLE: TRUSS SPACE FRAME DIAGONAL BRACE "LL" END FITTING	
FINISH ④		APPROVED: J. BECHTOLD	10/19/05	DRAWING NUMBER: 13241	
ASSEMBLY APPLICATION		APPROVED: R. WARNER	10/19/05	REVISION: A	
CURRENT TIME/DATE/FILE LOCATION:		DRAWING ARCHIVE LOCATION: http://dovinc1.es.arizona.edu/ocad/default.html		SHEET 1 OF 1	