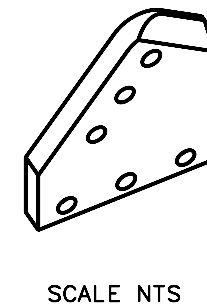
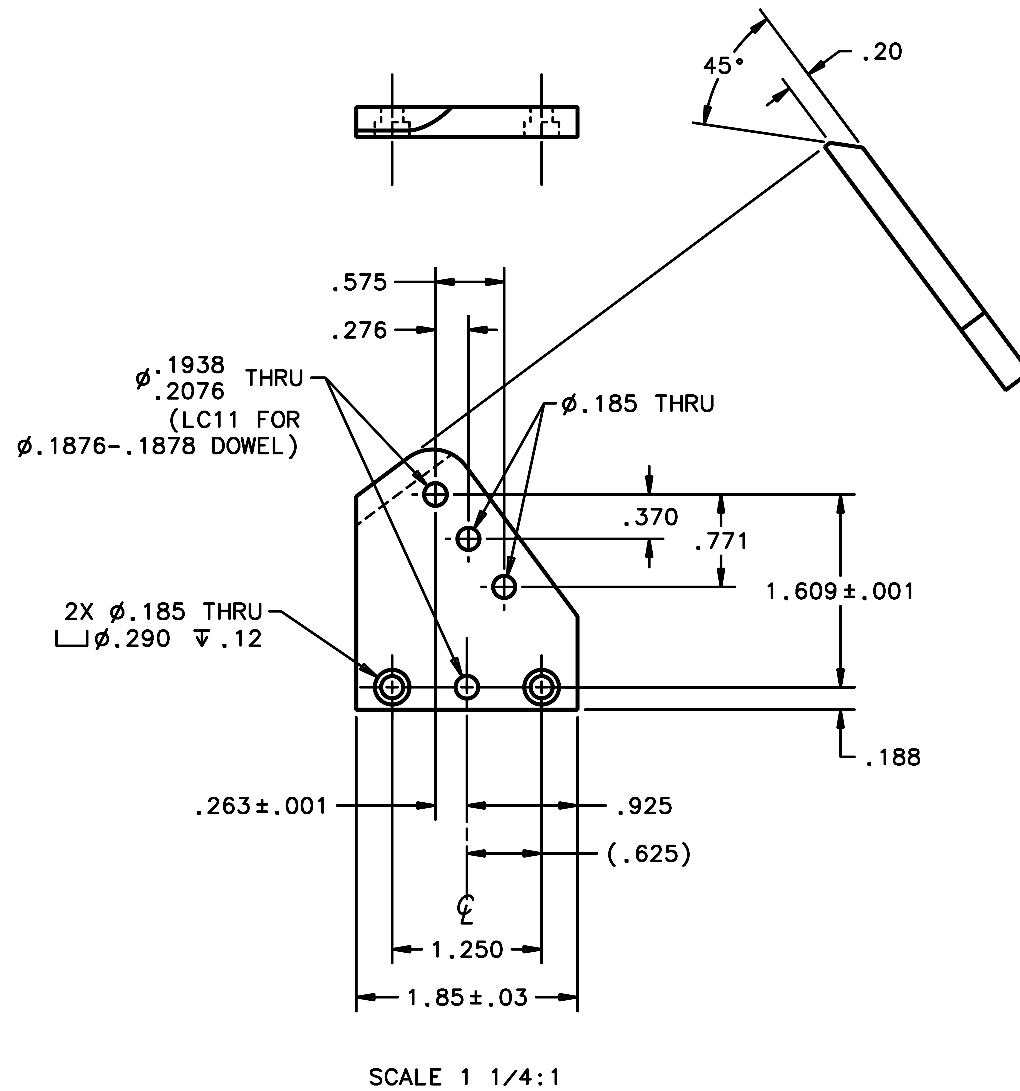
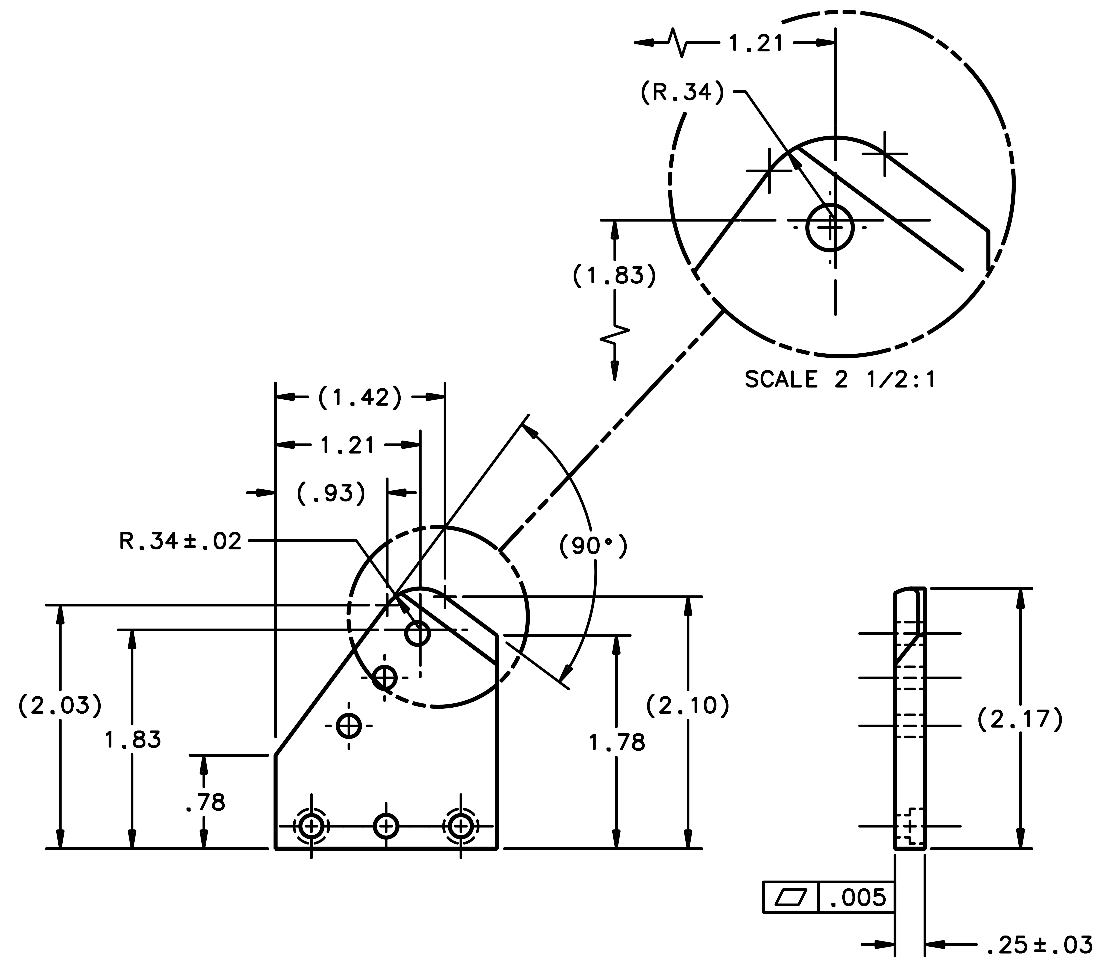


REVISIONS				
LTR	DESCRIPTION	DATE	REVISED BY	APPROVED
A	INITIAL RELEASE	10/19/05	R. NAGY	J. BECHTOLD



- NOTES:
- BREAK SHARP EDGES & DEBURR.
  - MACHINED SURFACE FINISH TO BE 125 RMS OR BETTER.
  - MACHINED FILLETS TO BE .015 MAX.
  - ANODIZE PER MIL-A-8625, TYPE II, CLASS 2, BLACK.
  - DIMENSIONS ARE BEFORE ANODIZING.
  - QTY REQD: 9.

OPPOSITE HAND OF 13238

DO NOT SCALE DRAWING INTERPRET DIMENSIONS AND TOLERANCES IN ACCORDANCE WITH ASME Y14.5M-94		THIS DRAWING CREATED IN: ACAD <input type="checkbox"/> MECH <input type="checkbox"/> IDEAS <input checked="" type="checkbox"/>		Steward Observatory, University of Arizona 933 N. Cherry Avenue, Tucson, AZ 85721 (520)621-7659	
TOLERANCES UNLESS OTHERWISE SPECIFIED LINEAR .1 = NA ± .01 .2X = ± .01 .XXX = ± .005 DIAMETRICAL SEE SPEC S-002		DESIGNED BY: D. DEAN	DATE: 9/3/03	CATEGORY: MMT	
MATERIAL 6061-T6 Al		DRAWN BY: R. NAGY	7/26/05	PROJECT: MAESTRO	
FINISH <input checked="" type="checkbox"/>		CHECKED BY: J. BECHTOLD	10/19/05	TITLE: TRUSS SPACE FRAME DIAGONAL BRACE "R" END FITTING PLATE	
ASSEMBLY APPLICATION		APPROVED BY: R. WARNER	10/19/05	PLOT SIZE SCALE: D -	DRAWING NUMBER: 13240
CURRENT TIME/DATE/FILE LOCATION: DRAWING ARCHIVE LOCATION: <a href="http://dovinci.as.arizona.edu/oced/default.html">http://dovinci.as.arizona.edu/oced/default.html</a>		APPROVED:		REVISION: A	SHEET 1 OF 1