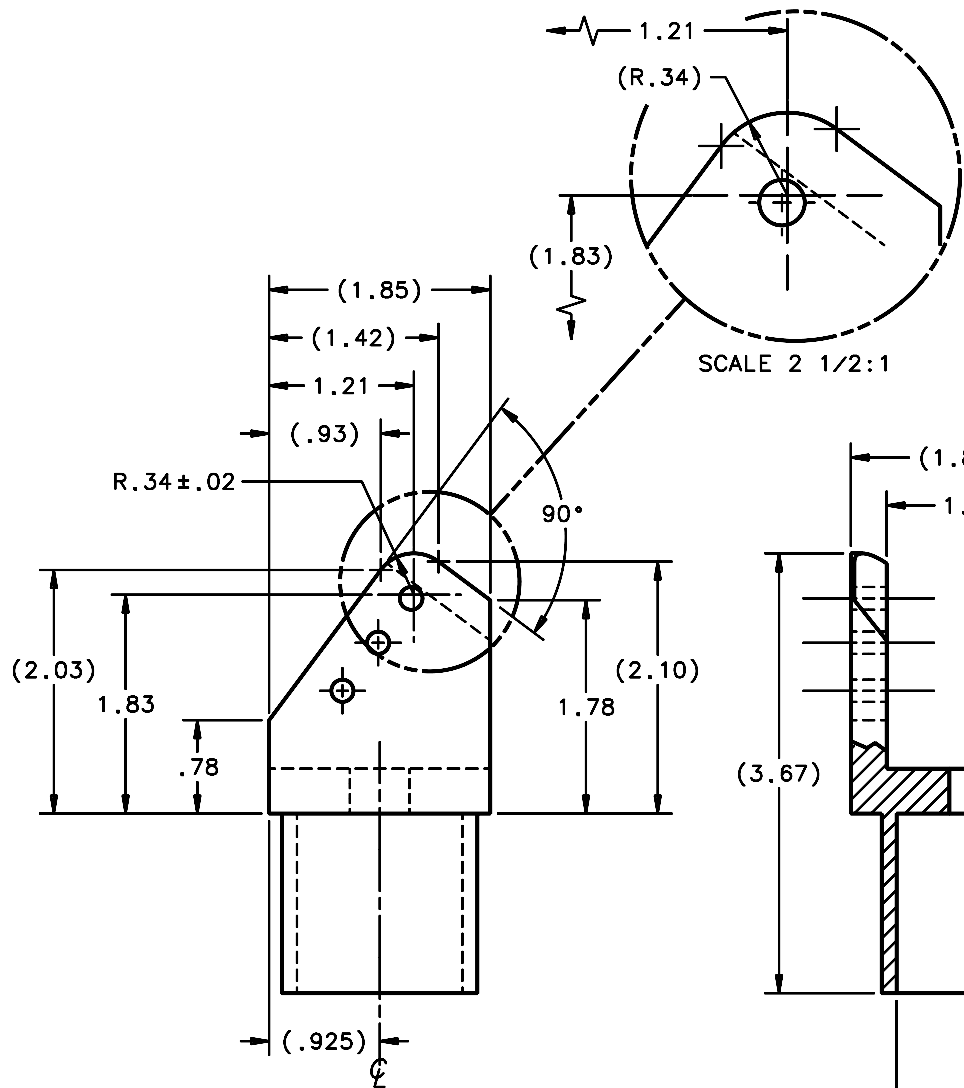
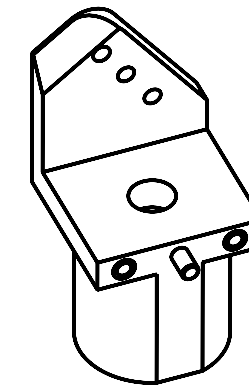
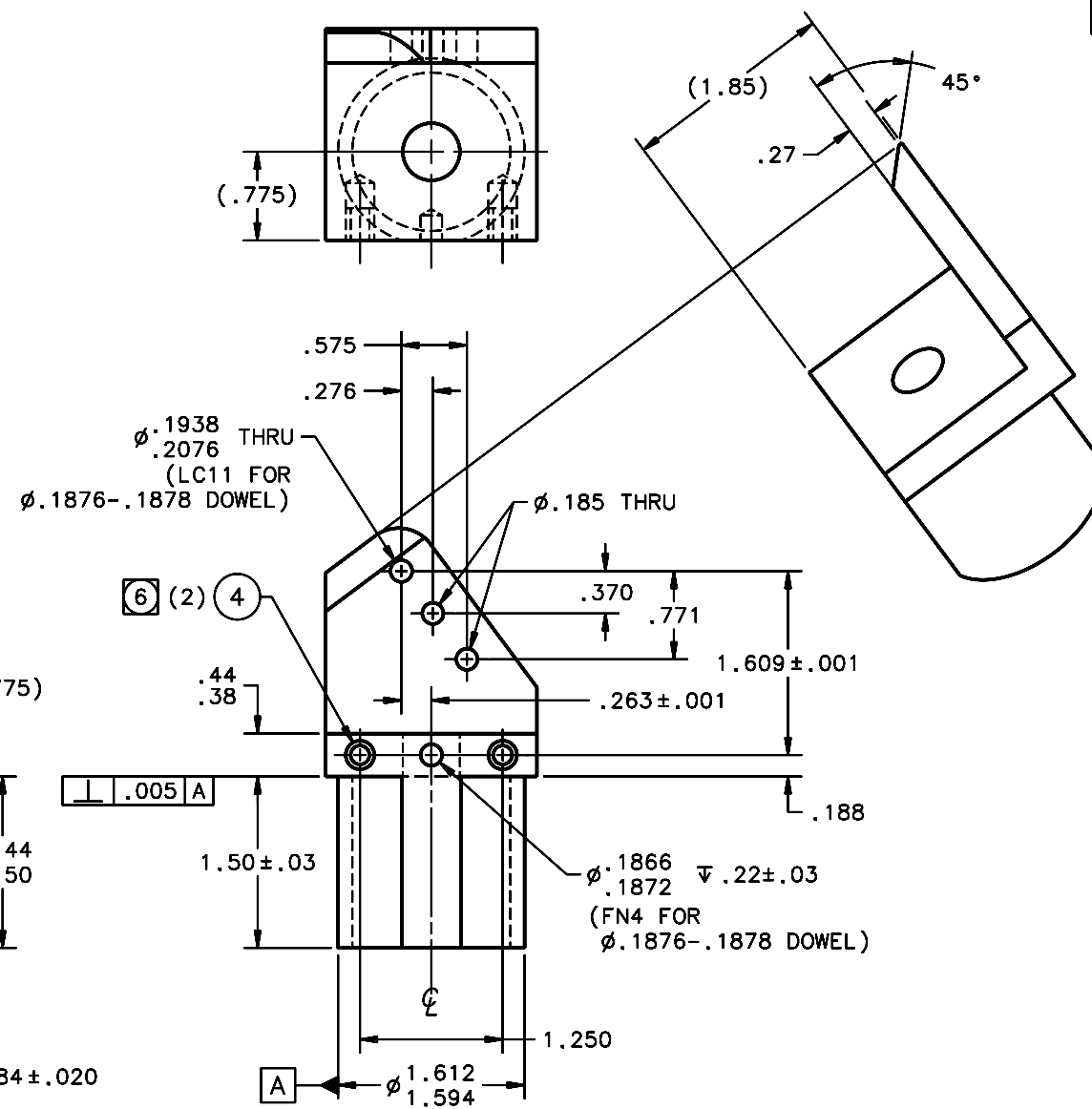


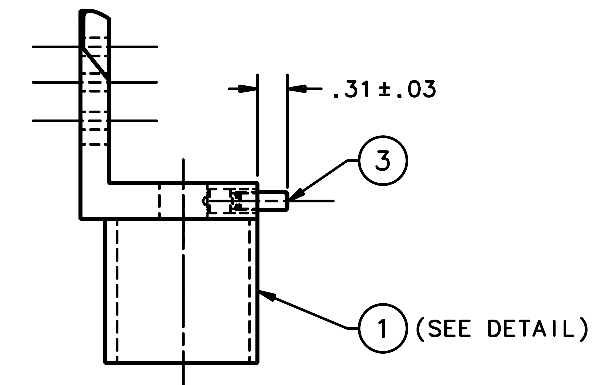
REVISIONS				
LTR	DESCRIPTION	DATE	REVISED BY	APPROVED
A	INITIAL RELEASE	10/19/05	R. NAGY	J. BECHTOLD



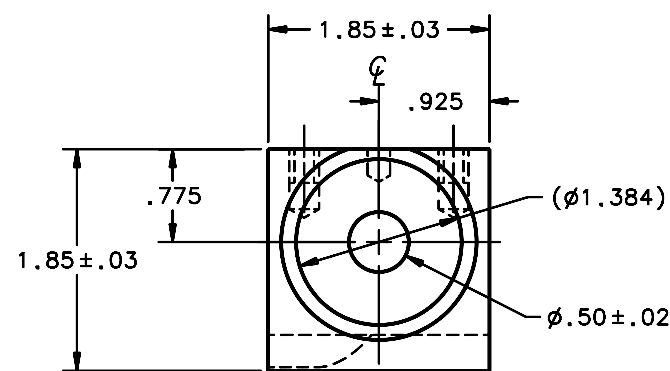
① *R* END FITTING
SCALE 1 1/4:1



SCALE NTS



ASSEMBLY
SCALE 1:1



OPPOSITE HAND OF 13237

QTY PER ASSY	PART NUMBER	PART DESCRIPTION	MANUFACTURER of MAT'L SPEC	ITEM NO.
2	94165A423	INSERT, THREADED OD (1/4-28), EXT NYLON LOCK, 8-32 x 9/32 LG, 18-8 SS	McMASTER-CARR	4
1	90145A505	PIN, DOWEL, STANDARD, UNHARDENED, Ø3/16 (.1876-.1878) x 1/2 LG, 18-8 SS	McMASTER-CARR	3
1	13239-5	*R* END FITTING		1

LIST OF MATERIALS

Steward Observatory, University of Arizona
933 N. Cherry Avenue, Tucson, AZ 85721 (520)621-7659

DESIGNED BY: D. DEAN	DATE: 9/3/03	CATEGORY: MMT
DRAWN BY: R. NAGY	7/25/05	PROJECT: MAESTRO
CHECKED BY: J. BECHTOLD	10/19/05	TITLE: TRUSS SPACE FRAME DIAGONAL BRACE *R* END FITTING
APPROVED: J. BECHTOLD	10/19/05	
APPROVED: R. WARNER	10/19/05	

16006	MMT-MAESTRO	APPROVED:	PLOT SIZE SCALE: D -	DRAWING NUMBER: 13239	REVISION: A
13234	MMT-MAESTRO	APPROVED:			
	NEXT ASSY USED ON	APPROVED:			

DO NOT SCALE DRAWING	THIS DRAWING CREATED IN:
INTERPRET DIMENSIONS AND TOLERANCES IN ACCORDANCE WITH ASME Y14.5M-94	ACAD <input type="checkbox"/> MECH <input type="checkbox"/> IDEAS <input checked="" type="checkbox"/>
TOLERANCES UNLESS OTHERWISE SPECIFIED	
LINEAR .XX = ±.01	
ANGULAR .XXX = ±.005	
DIAMETRICAL SEE SPEC S-002	
6061-T6 A1	16006 MMT-MAESTRO
FINISH ④	13234 MMT-MAESTRO
	NEXT ASSY USED ON
	ASSEMBLY APPLICATION

NOTES:

- BREAK SHARP EDGES & DEBURR.
- MACHINED SURFACE FINISH TO BE 125 RMS OR BETTER.
- MACHINED FILLETS TO BE .015 MAX.
- ANODIZE PER MIL-A-8625, TYPE II, CLASS 2 - BLACK.
- DIMENSIONS ARE BEFORE ANODIZING.
- INSTALL INSERTS PER MANUFACTURER'S DIRECTIONS. FOR THIS APPLICATION, INSERT TAP DRILL MUST BE .50 MIN DEEP.
- QTY REQD: 9.