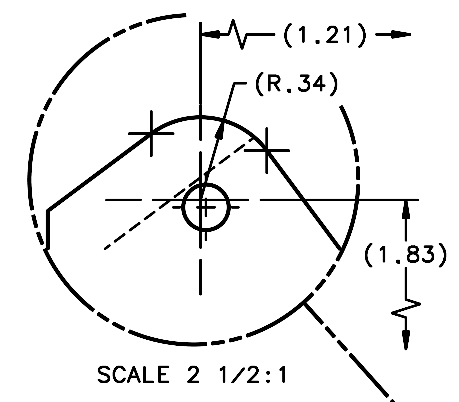
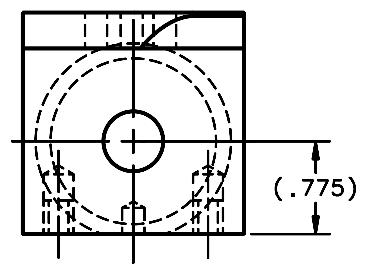
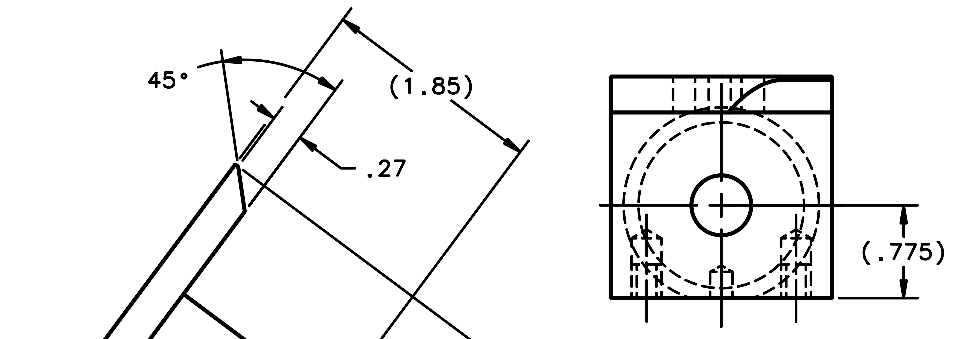
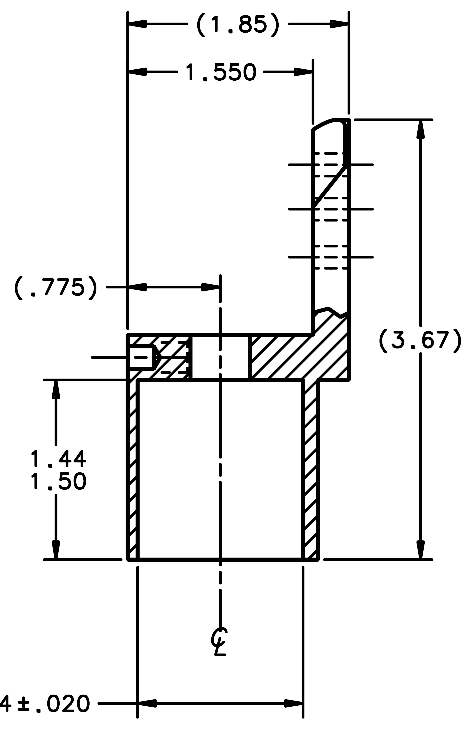
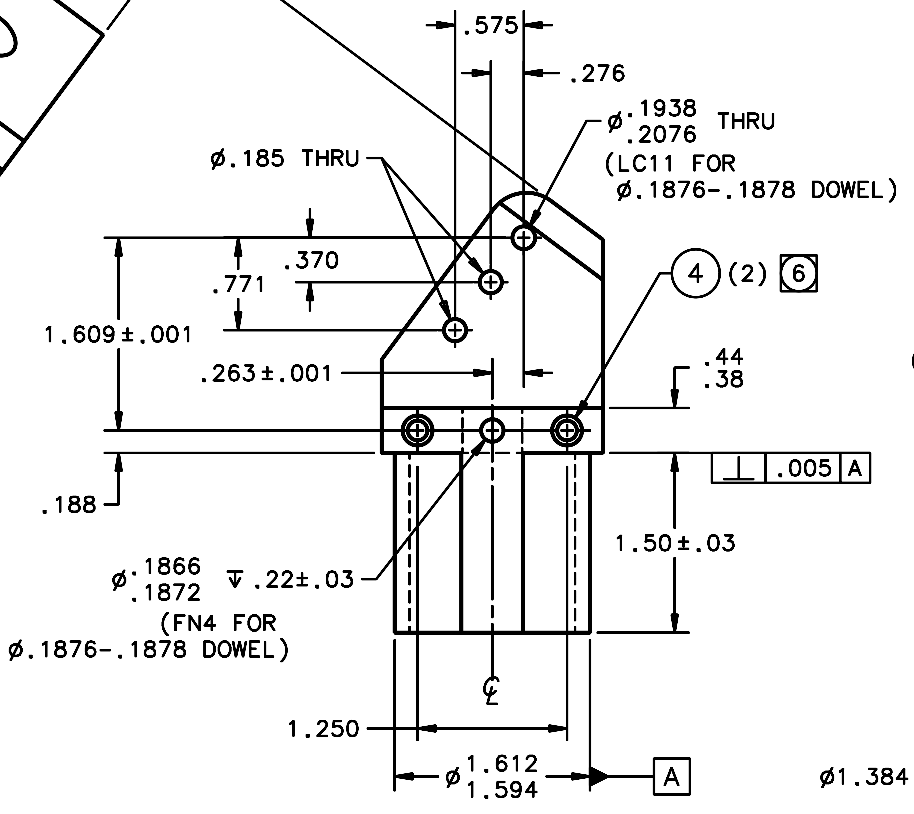


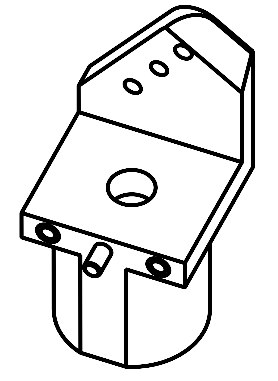
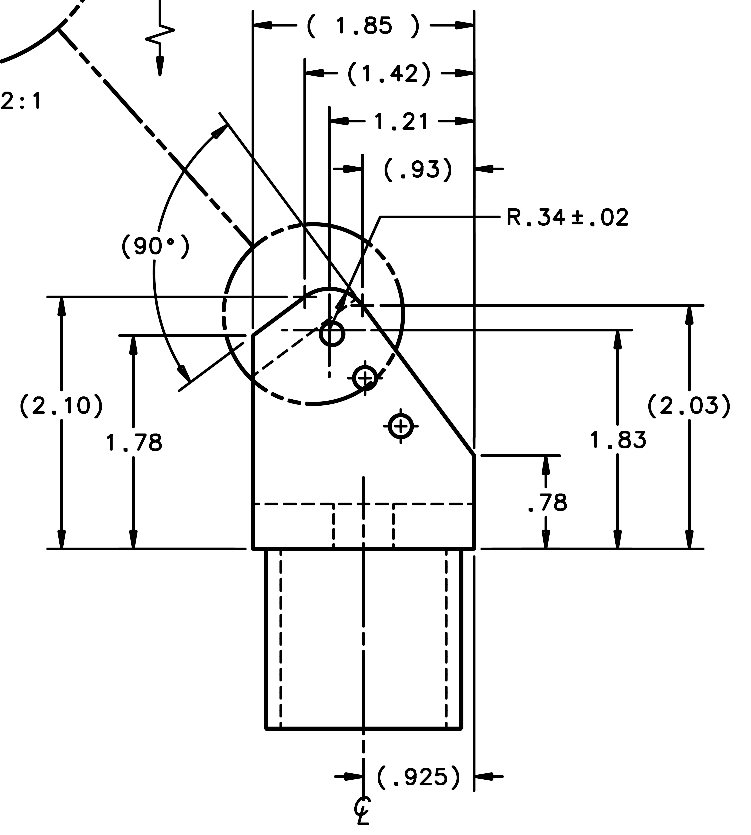
REVISIONS				
LTR	DESCRIPTION	DATE	REVISED BY	APPROVED
A	INITIAL RELEASE	10/19/05	R. NAGY	J. BECHTOLD



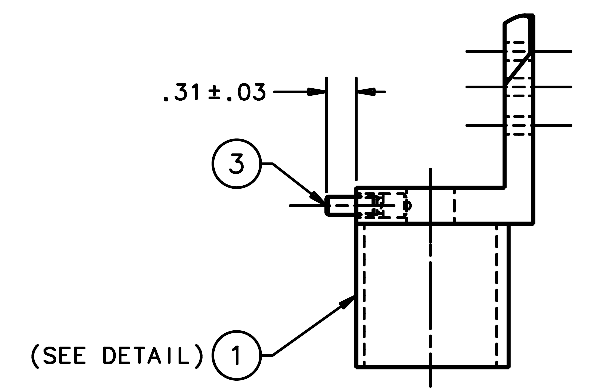
SCALE 2 1/2:1



① "L" END FITTING  
SCALE 1 1/4:1

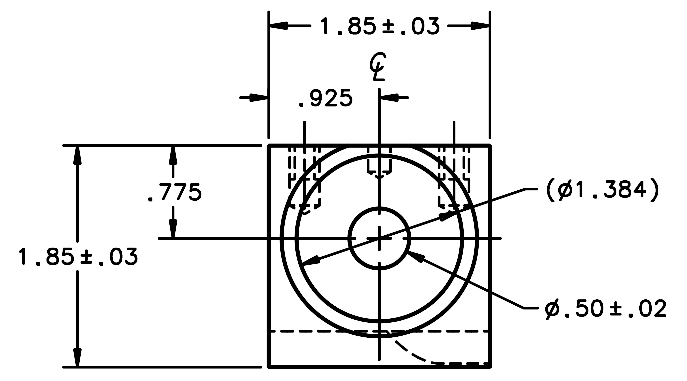


SCALE NTS



(SEE DETAIL) ①

ASSEMBLY  
SCALE 1:1



OPPOSITE HAND OF 13239

QTY PER ASSY	PART NUMBER	PART DESCRIPTION	MANUFACTURER or MAT'L SPEC	ITEM NO.
2	94165A423	INSERT, THREADED OD (1/4-28), EXT NYLON LOCK, 8-32 x 9/32 LG, 18-8 SS	McMASTER-CARR	4
1	90145A505	PIN, DOWEL, STANDARD, UNHARDENED, #3/16 (.1876-.1878) x 1/2 LG, 18-8 SS	McMASTER-CARR	3
1	13237-5	"L" END FITTING		1

LIST OF MATERIALS

DO NOT SCALE DRAWING		THIS DRAWING CREATED IN:		Steward Observatory, University of Arizona	
INTERPRET DIMENSIONS AND TOLERANCES IN ACCORDANCE WITH ASME Y14.5M-94		ACAD <input type="checkbox"/>	MECH <input type="checkbox"/>	IDEAS <input checked="" type="checkbox"/>	933 N. Cherry Avenue, Tucson, AZ 85721 (520)621-7659
TOLERANCES UNLESS OTHERWISE SPECIFIED		DESIGNED BY: D. DEAN	DATE: 9/3/03	CATEGORY: MMT	
LINEAR: .XX = ±.01, .XXX = ±.005		DRAWN BY: R. NAGY	7/19/05	PROJECT: MAESTRO	
ANGULAR: ± 1°		CHECKED BY: J. BECHTOLD	10/19/05	TITLE: TRUSS SPACE FRAME	
DIAMETRICAL: SEE SPEC S-002		APPROVED BY: J. BECHTOLD	10/19/05	DIAGONAL BRACE	
MATERIAL: 6061-T6 Al		APPROVED BY: R. WARNER	10/19/05	"L" END FITTING	
FINISH: ④		APPROVED:		PLOT SIZE: D	SCALE: -
ASSEMBLY APPLICATION		APPROVED:		DRAWING NUMBER: 13237	REVISION: A
CURRENT TIME/DATE/FILE LOCATION:					SHEET 1 OF 1
DRAWING ARCHIVE LOCATION: http://dev1ncl.es.arizona.edu/oced/default.html					

- NOTES:
- BREAK SHARP EDGES & DEBURR.
  - MACHINED SURFACE FINISH TO BE 125 RMS OR BETTER.
  - MACHINED FILLETS TO BE .015 MAX.
  - ④ ANODIZE PER MIL-A-8625, TYPE II, CLASS 2, BLACK.
  - DIMENSIONS ARE BEFORE ANODIZING.
  - ⑥ INSTALL INSERTS PER MANUFACTURER'S DIRECTIONS. FOR THIS APPLICATION, INSERT TAP DRILL MUST BE .50 MIN DEEP.
  - QTY REQD: 8.