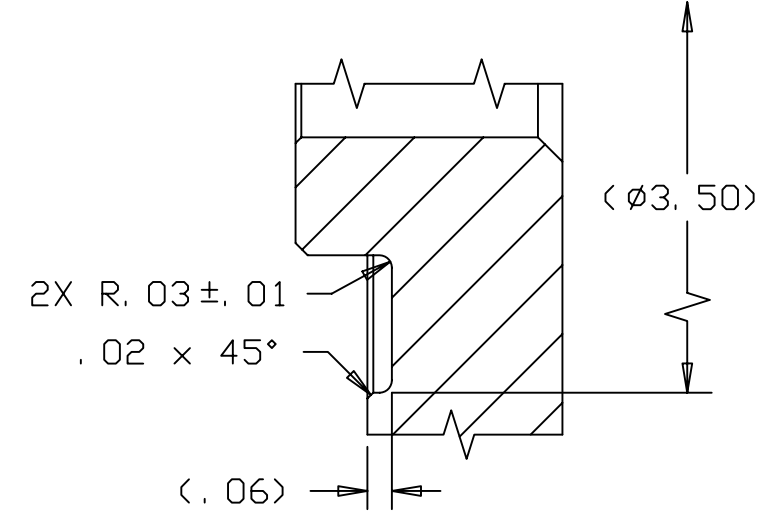
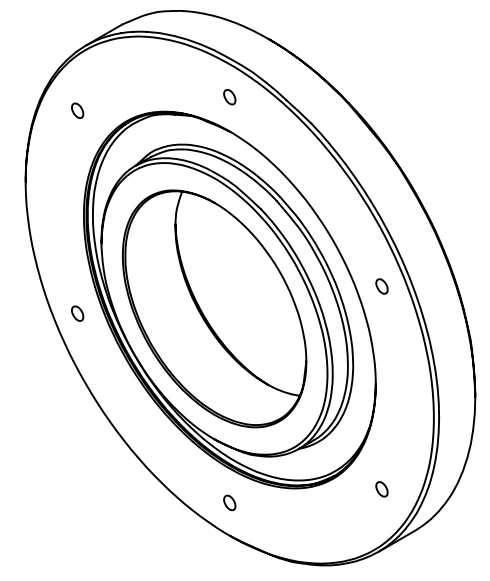
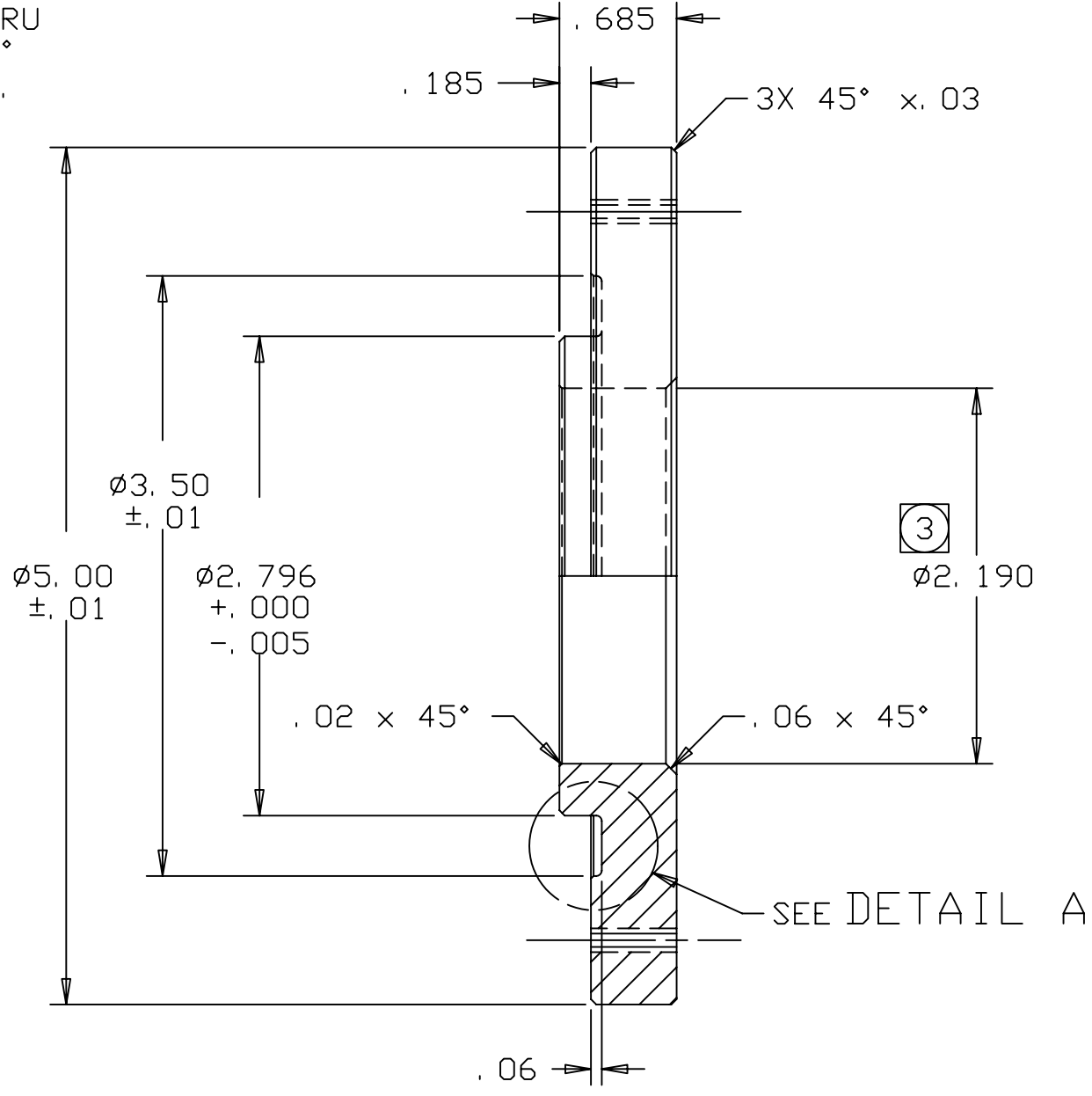
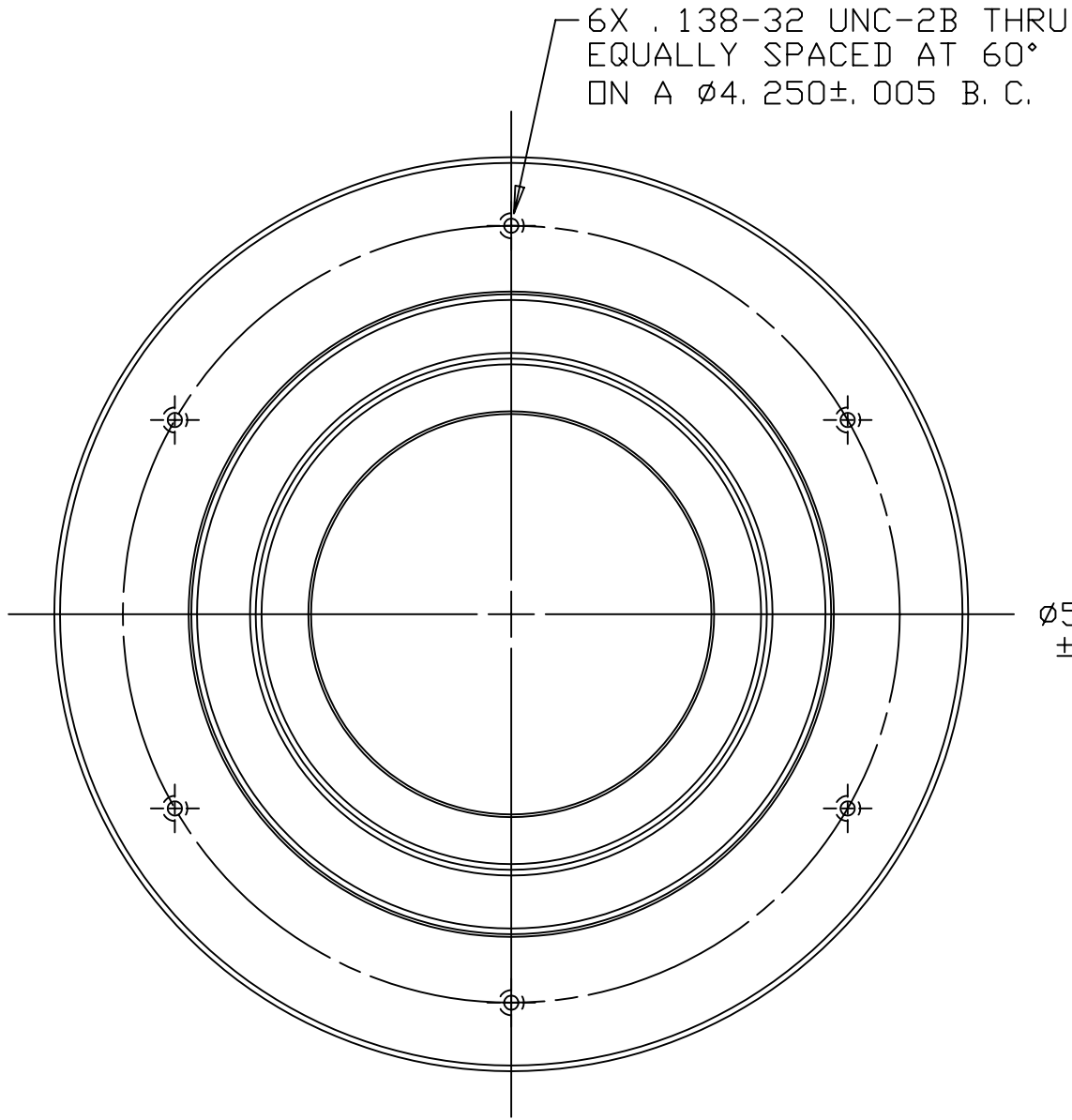


REVISIONS				
LTR	DESCRIPTION	DATE	REVISED BY	APPROVED
A	INITIAL RELEASE	2/12/04	R. NAGY	M. REED



DETAIL A
SCALE 2/1

- NOTES:
- BREAK SHARP EDGES & DEBURR.
 - MACHINED SURFACE FINISH TO BE 125 RMS.
 - SLIP-FIT WITH 13575 RISER RING.

DO NOT SCALE DRAWING INTERPRET DIMENSIONS AND TOLERANCES IN ACCORDANCE WITH ASME Y14.5M-94	THIS DRAWING CREATED IN: ACAD <input type="checkbox"/> MECH <input type="checkbox"/> IDEAS <input checked="" type="checkbox"/>	Steward Observatory, University of Arizona 933 N. Cherry Avenue, Tucson, AZ 85721 (520)621-7659		
TOLERANCES UNLESS OTHERWISE SPECIFIED LINEAR ANGULAR .X = NA ± 1° .XX = ± .01 .XXX = ± .005 DIAMETRICAL SEE SPEC S-002		DESIGNED BY: D. DEAN	DATE: 2/2/04	CATEGORY: MMT
DIMENSIONS ARE IN INCHES / DIMENSIONS IN () ARE METRIC		CHECKED BY: D. DEAN/M. REED	DATE: 2/12/04	PROJECT: MAESTRO
MATERIAL 6061-T6 Al	13573 MMT	APPROVED BY: M. REED	DATE: 2/12/04	TITLE: TEST LENS CELL-CaF2 POTTING JIG BASE
FINISH NONE	NEXT ASSY USED ON	APPROVED:		PLOT SIZE SCALE: B 1/1 & NOTED
	ASSEMBLY APPLICATION	APPROVED:		DRAWING NUMBER: 13574
		CURRENT TIME/DATE/FILE LOCATION:		REVISION: A
		DRAWING ARCHIVE LOCATION: http://davinci.as.arizona.edu/acad/default.html		SHEET 1 OF 1