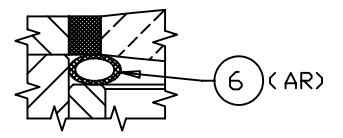
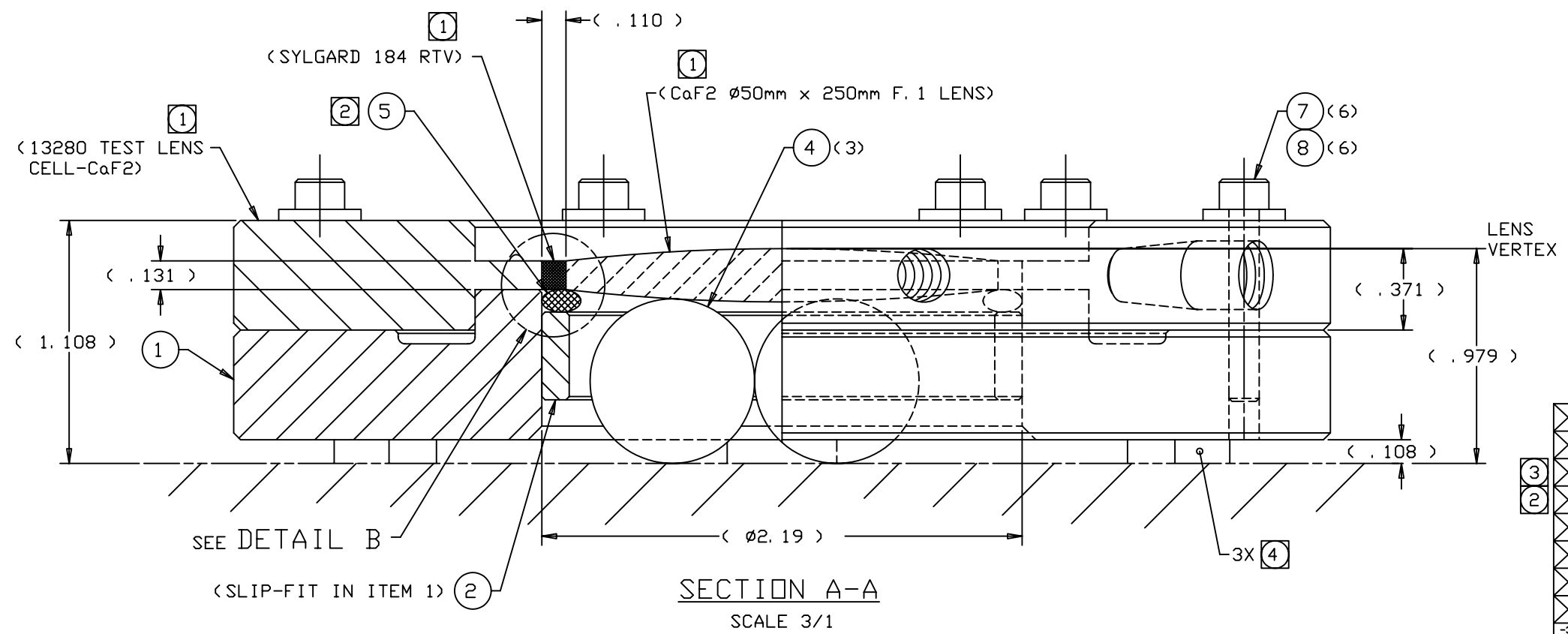
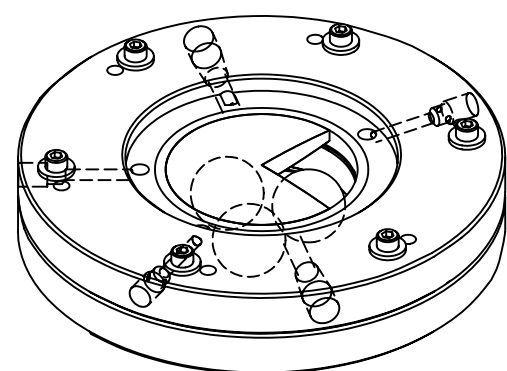
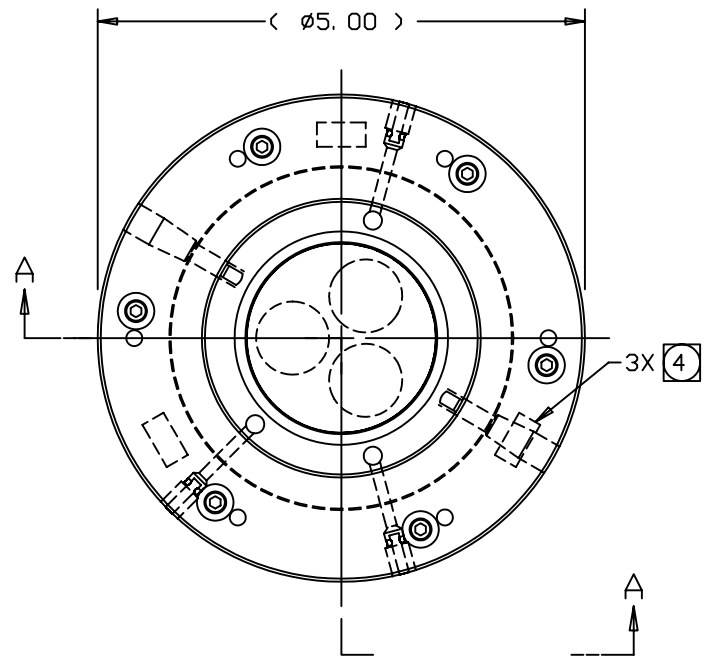


REVISIONS				
LTR	DESCRIPTION	DATE	REVISED BY	APPROVED
A	INITIAL RELEASE	2/12/04	R. NAGY	M. REED



DETAIL B
SCALE 3/1
ALTERNATE METHOD

QTY PER ASSY	PART NUMBER	PART DESCRIPTION	MANUFACTURER or MAT'L SPEC	ITEM NO.
6	90126A509	WASHER, FLAT, #6 SAE (.375 OD x .036-.065), LOW STRENGTH STL	McMASTER-CARR	8
6	91251A152	SHCS, .138-32 UNC-2A x .875 LG, HEAT-TREATED ALLOY STEEL, BLACK FINISH	McMASTER-CARR	7
AR	7132K512	HEAT SHRINK TUBING, .125 ID, MATL: PVC	McMASTER-CARR	6
1	9557K235	O-RING, 2-233 (NDM. 2.875 ID x 3.125 OD x .125 W), MATL: EDPM	McMASTER-CARR	5
3	9291K38	BEARING BALL, Ø. 75, 302 SST	McMASTER-CARR	4
				3
1	13575	RISER RING		2
1	13574	BASE		1

LIST OF MATERIALS

DO NOT SCALE DRAWING	THIS DRAWING CREATED IN:	Steward Observatory, University of Arizona 933 N. Cherry Avenue, Tucson, AZ 85721 (520)621-7659			
INTERPRET DIMENSIONS AND TOLERANCES IN ACCORDANCE WITH ASME Y14.5M-94	ACAD <input type="checkbox"/> MECH <input type="checkbox"/> IDEAS <input checked="" type="checkbox"/>	DESIGNED BY: D. DEAN	DATE: 2/2/04	CATEGORY: MMT	
TOLERANCES UNLESS OTHERWISE SPECIFIED LINEAR .X = NA .XX = NA .XXX = NA ANGULAR NA DIAMETRICAL SEE SPEC S-002		DRAWN BY: R. NAGY	DATE: 2/5/04	PROJECT: MAESTRO	
		CHECKED BY: D. DEAN/M. REED	DATE: 2/12/04	TITLE: TEST LENS CELL-CaF2 POTTING JIG ASSEMBLY	
		APPROVED: M. REED	DATE: 2/12/04		
MATERIAL		APPROVED:		PLOT SIZE	SCALE
-				D	1/1 & NOTED
FINISH		APPROVED:		DRAWING NUMBER:	REVISION:
-	ASSEMBLY APPLICATION			13573	A
		CURRENT TIME/DATE/FILE LOCATION:			
		DRAWING ARCHIVE LOCATION: http://dsv.inci.as.arizona.edu/acad/default.html	SHEET 1 OF 1		

- NOTES:
- 1 NOTED ITEMS ARE REFERENCED ON THIS ASSEMBLY TO SHOW THEIR PLACEMENT. THEY ARE CALLED OUT ON 13278 LENS TEST CELL ASSEMBLY.
 - 2 CUT & FIT OR EQUIVALENT.
 - 3 ITEM 6 HEAT SHRINK MAY BE SUBSTITUTED FOR ITEM 5 O-RING (SEE DETAIL B).
 - 4 SHIM AS REQUIRED.