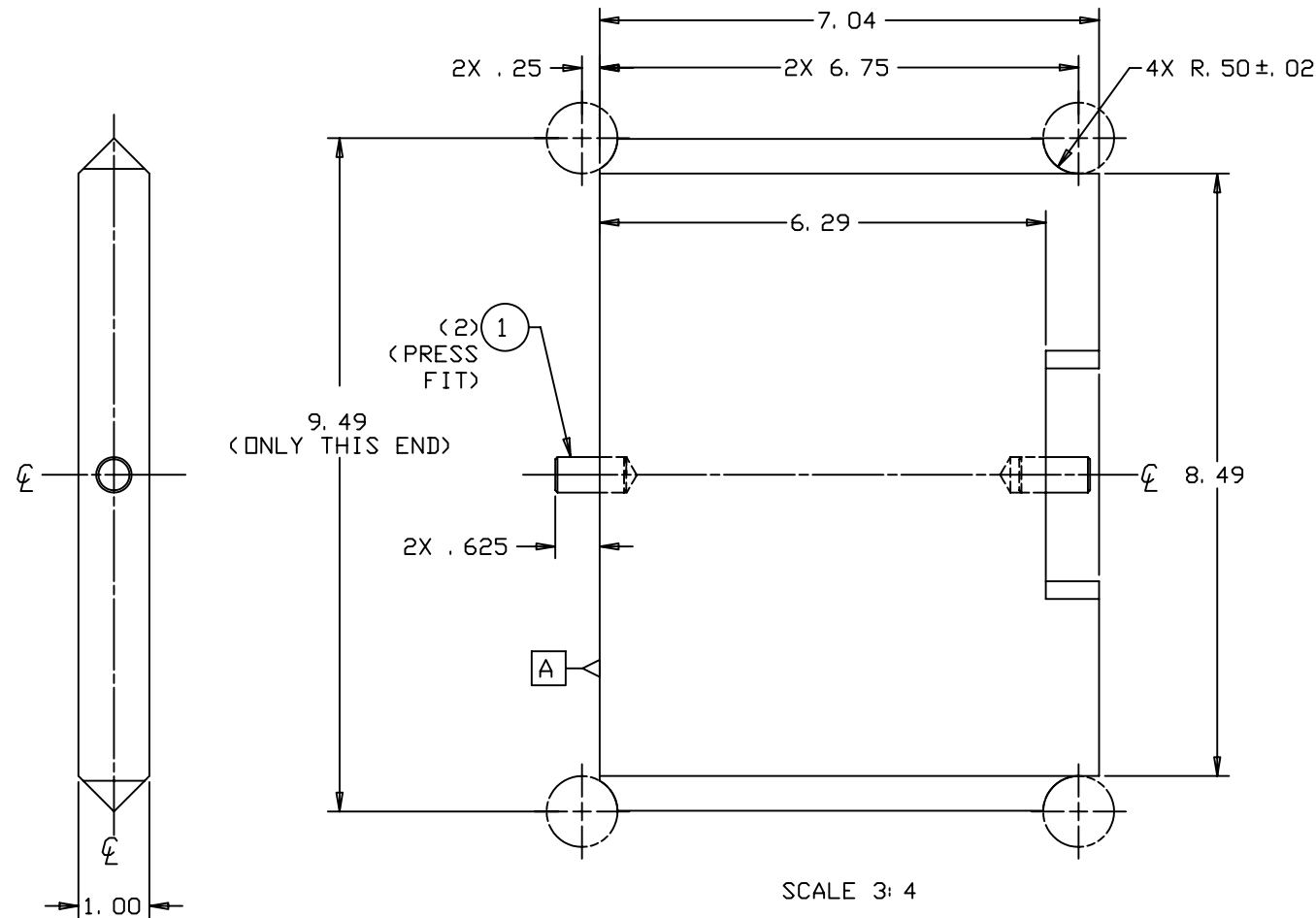
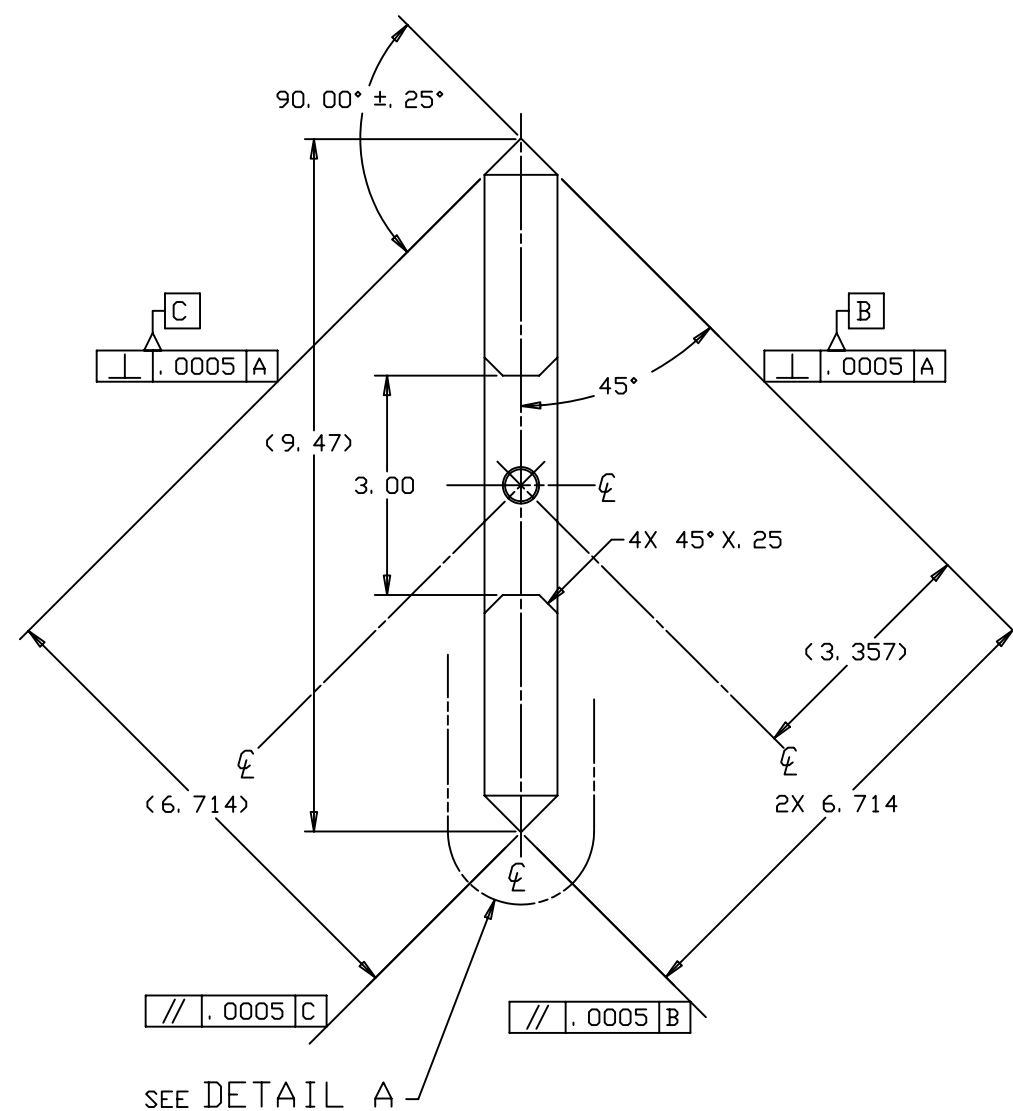


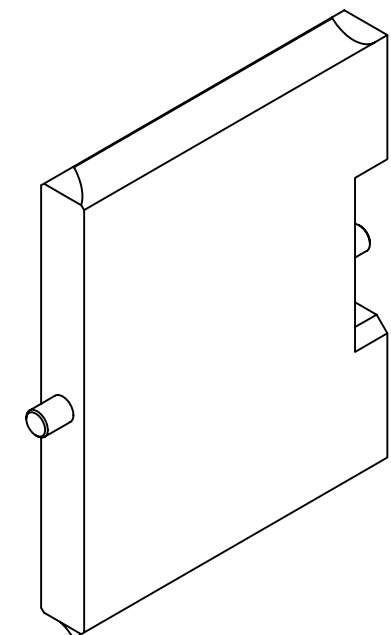
| REVISIONS | | | | |
|-----------|-----------------|---------|------------|-----------|
| LTR | DESCRIPTION | DATE | REVISED BY | APPROVED |
| A | INITIAL RELEASE | 8/17/04 | R. NAGY | G. LANDIS |



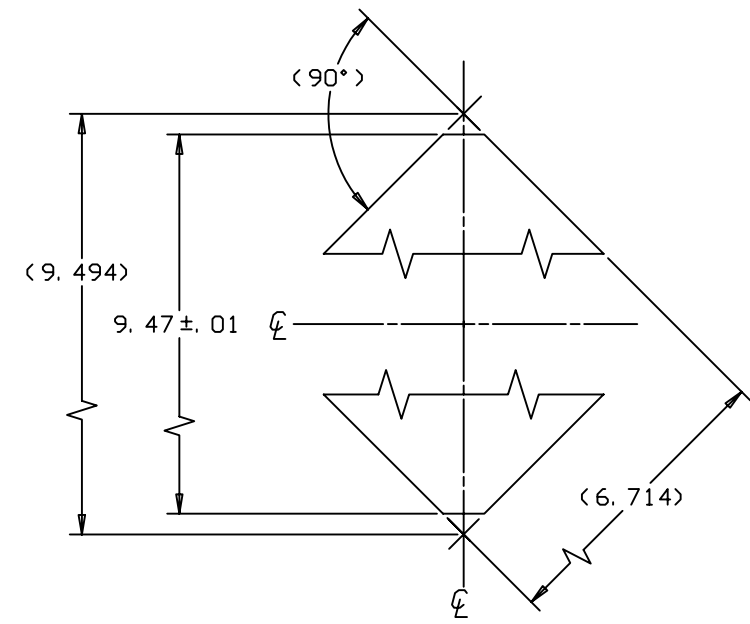
SCALE 3: 4



SEE DETAIL A



SCALE NTS



DETAIL A
SCALE 20: 1

- NOTES:
1. BREAK SHARP EDGES & DEBURR.
 2. MACHINED SURFACE FINISH TO BE 125 RMS OR BETTER.
 3. MACHINED FILLETS TO BE R. 015 MAX UNLESS OTHERWISE SPECIFIED.

| | | | |
|---|---|--|---------------|
| DO NOT SCALE DRAWING | THIS DRAWING CREATED IN: | Steward Observatory, University of Arizona 933 N. Cherry Avenue, Tucson, AZ 85721 (520)621-7659 | |
| INTERPRET DIMENSIONS AND TOLERANCES IN ACCORDANCE WITH ASME Y14.5M-94 | ACAD <input type="checkbox"/> MECH <input type="checkbox"/> IDEAS <input checked="" type="checkbox"/> | DESIGNED BY: G. L. /S. M. /D. D. | DATE: 6/8/04 |
| TOLERANCES UNLESS OTHERWISE SPECIFIED LINEAR .X = NA .XX = ±.02 .XXX = ±.005 DIAMETRICAL SEE SPEC S-002 | | DRAWN BY: R. NAGY | DATE: 6/10/04 |
| DIMENSIONS ARE IN INCHES / DIMENSIONS IN [] ARE METRIC | | CHECKED BY: G. LANDIS | DATE: 8/17/04 |
| | | APPROVED: S. MATHEWS | DATE: 8/17/04 |
| | | APPROVED: M. REED | DATE: 8/17/04 |
| MATERIAL 6061-T6 AL | 13557 MMT | APPROVED: J. BECHTOLD | DATE: 8/17/04 |
| FINISH NONE | NEXT ASSY USED ON | APPROVED: | |
| | ASSEMBLY APPLICATION | CURRENT TIME/DATE/FILE LOCATION: | |
| | | DRAWING ARCHIVE LOCATION: http://dev1nc1.as.arizona.edu/acad/default.html | |
| QTY PER ASSY 2 | | PART NUMBER 90145A712 | |
| PART DESCRIPTION PIN, DOWEL, STANDARD, Ø. 50 x 1.0 LG, 18-8 CRES | | MANUFACTURER or MAT'L SPEC McMASTER-CARR | |
| ITEM NO. 1 | | CATEGORY: MMT | |
| PROJECT: MAESTRO | | TITLE: LENS CAN-LENS 1 STAGE SHELL RAIL ALIGNMENT TOOL | |
| PLOT SIZE D | SCALE: - | DRAWING NUMBER: 13593 | REVISION: A |
| SHEET 1 OF 1 | | | |