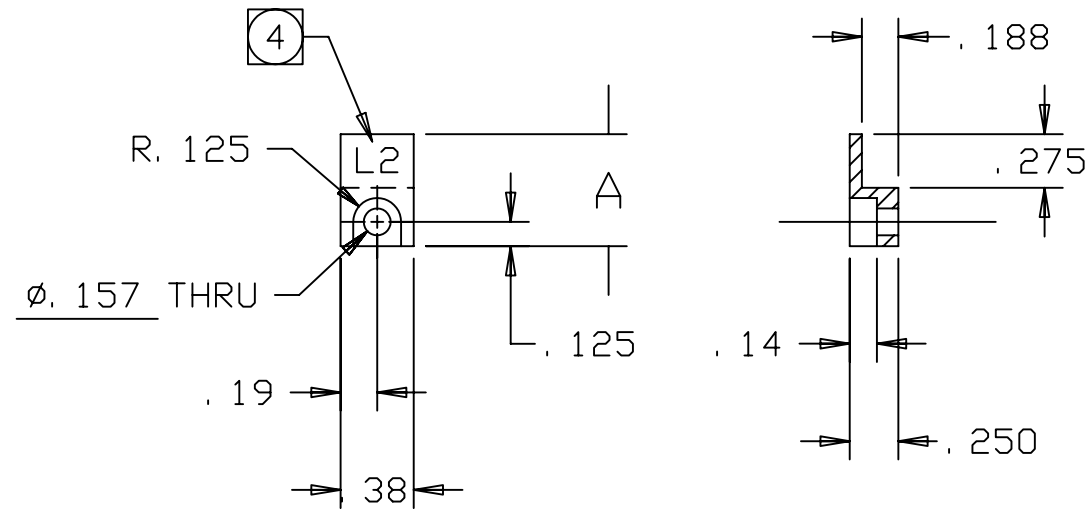


REVISIONS				
LTR	DESCRIPTION	DATE	REVISED BY	APPROVED
A	INITIAL RELEASE	4/27/04	R. NAGY	G. LANDIS



-1 SHOWN

DASH NO.	A
-1	.575
-2	.625

NOTES:

- BREAK SHARP EDGES & DEBURR.
- MACHINED SURFACE FINISH TO BE 125 RMS OR BETTER.
- MACHINED FILLETS TO BE .015 MAX.
- BEFORE ANODIZING, METAL STAMP OR ENGRAVE "L2" FOR -1, "L3" FOR -2, USING .09-.12 HIGH CHARACTERS APPROX WHERE SHOWN.
DO NOT DEFORM PART WHEN STAMPING.
- ANODIZE PER MIL-A-8625, TYPE II, CLASS 2, BLACK.
- DIMENSIONS ARE PRIOR TO ANODIZING.

13485-2		LENS 3 CLIP	
13485-1		LENS 2 CLIP	
-3	-2	-1	
QTY PER ASSY		PART NUMBER	PART DESCRIPTION
LIST OF MATERIALS			
DO NOT SCALE DRAWING		THIS DRAWING CREATED IN:	
INTERPRET DIMENSIONS AND TOLERANCES IN ACCORDANCE WITH ASME Y14.5M-94		ACAD <input type="checkbox"/>	MECH <input type="checkbox"/>
TOLERANCES UNLESS OTHERWISE SPECIFIED		IDEAS <input checked="" type="checkbox"/>	
LINEAR		ANGULAR	
.X = NA		± 1°	
.XX = ± .01			
.XXX = ± .005			
DIAMETRICAL			
SEE SPEC S-002			
DIMENSIONS ARE IN INCHES / DIMENSIONS IN () ARE METRIC			
MATERIAL	13473	MMT	
6061-T6 AL	NEXT ASSY	USED ON	
FINISH	ASSEMBLY APPLICATION		
5			
DESIGNED BY: D. DEAN		DATE: 11/18/03	CATEGORY: MMT
DRAWN BY: R. NAGY		DATE: 11/24/03	PROJECT: MAESTRO
CHECKED BY: G. LANDIS		DATE: 4/14/04	TITLE: LENS CAN-LENS 2 TO 6 LENS CLIP
APPROVED: S. MATHEWS		DATE: 4/27/04	
APPROVED: M. REED		DATE: 4/27/04	
APPROVED: J. BECHTOLD		DATE: 4/27/04	
APPROVED:			
PLOT SIZE	SCALE:	DRAWING NUMBER:	REVISION:
B	1/1	13485	A
CURRENT TIME/DATE/FILE LOCATION:			SHEET 1 OF 1
DRAWING ARCHIVE LOCATION: http://davinci.as.arizona.edu/acad/default.html			