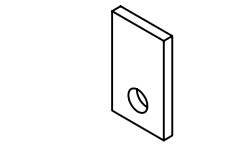
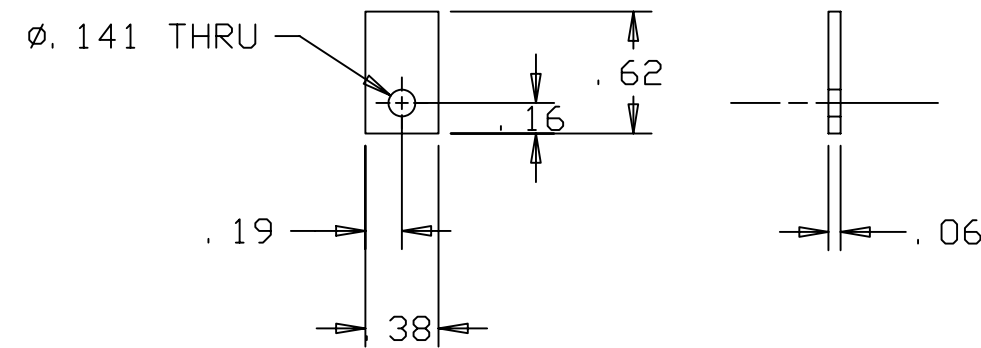


REVISIONS				
LTR	DESCRIPTION	DATE	REVISED BY	APPROVED
A	INITIAL RELEASE	8/17/04	R. NAGY	G. LANDIS



SCALE NTS

SCALE 1:1

- NOTES:
- BREAK SHARP EDGES & DEBURR.
 - MACHINED SURFACE FINISH TO BE 125 RMS OR BETTER.
 - ZINC CHROMATE PER ASTM-B-633-98, TYPE II, BLACK.
 - DIMENSIONS ARE PRIOR TO ZINC CHROMATE.

DO NOT SCALE DRAWING		THIS DRAWING CREATED IN:			Steward Observatory, University of Arizona 933 N. Cherry Avenue, Tucson, AZ 85721 (520)621-7659					
INTERPRET DIMENSIONS AND TOLERANCES IN ACCORDANCE WITH ASME Y14.5M-94		ACAD <input type="checkbox"/>	MECH <input type="checkbox"/>	IDEAS <input checked="" type="checkbox"/>	DESIGNED BY: D. DEAN	DATE: 11/18/03	CATEGORY: MMT			
TOLERANCES UNLESS OTHERWISE SPECIFIED					DRAWN BY: R. NAGY	DATE: 11/24/03	PROJECT: MAESTRO			
LINEAR ANGULAR .X = NA ± 1° .XX = ±.01 .XXX = NA					CHECKED BY: G. LANDIS	DATE: 8/17/04	TITLE: LENS CAN-LENS 1 FOCUS STAGE			
DIAMETRICAL SEE SPEC S-002					APPROVED: S. MATHEWS	DATE: 8/17/04	LENS 1 CLIP			
DIMENSIONS ARE IN INCHES / DIMENSIONS IN () ARE METRIC					APPROVED: M. REED	DATE: 8/17/04				
MATERIAL	4340 STEEL	13559	MMT		APPROVED: J. BECHTOLD	DATE: 8/17/04	PLOT SIZE	SCALE:	DRAWING NUMBER:	REVISION:
FINISH	③	NEXT ASSY	USED ON		APPROVED:		B	-	13477	A
ASSEMBLY APPLICATION					CURRENT TIME/DATE/FILE LOCATION:					
					DRAWING ARCHIVE LOCATION: http://davinci.as.arizona.edu/acad/default.html					
									SHEET 1 OF 1	