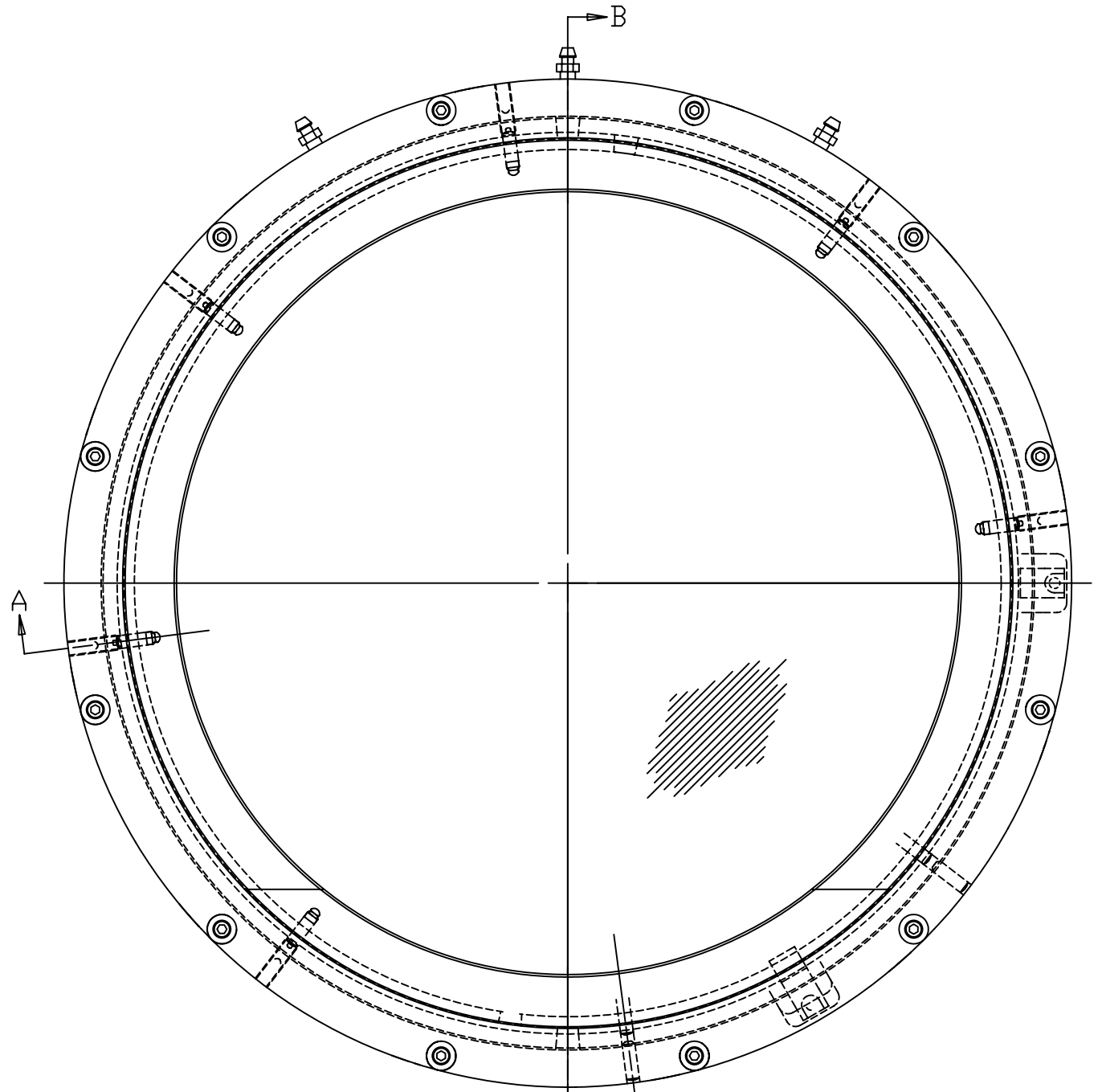
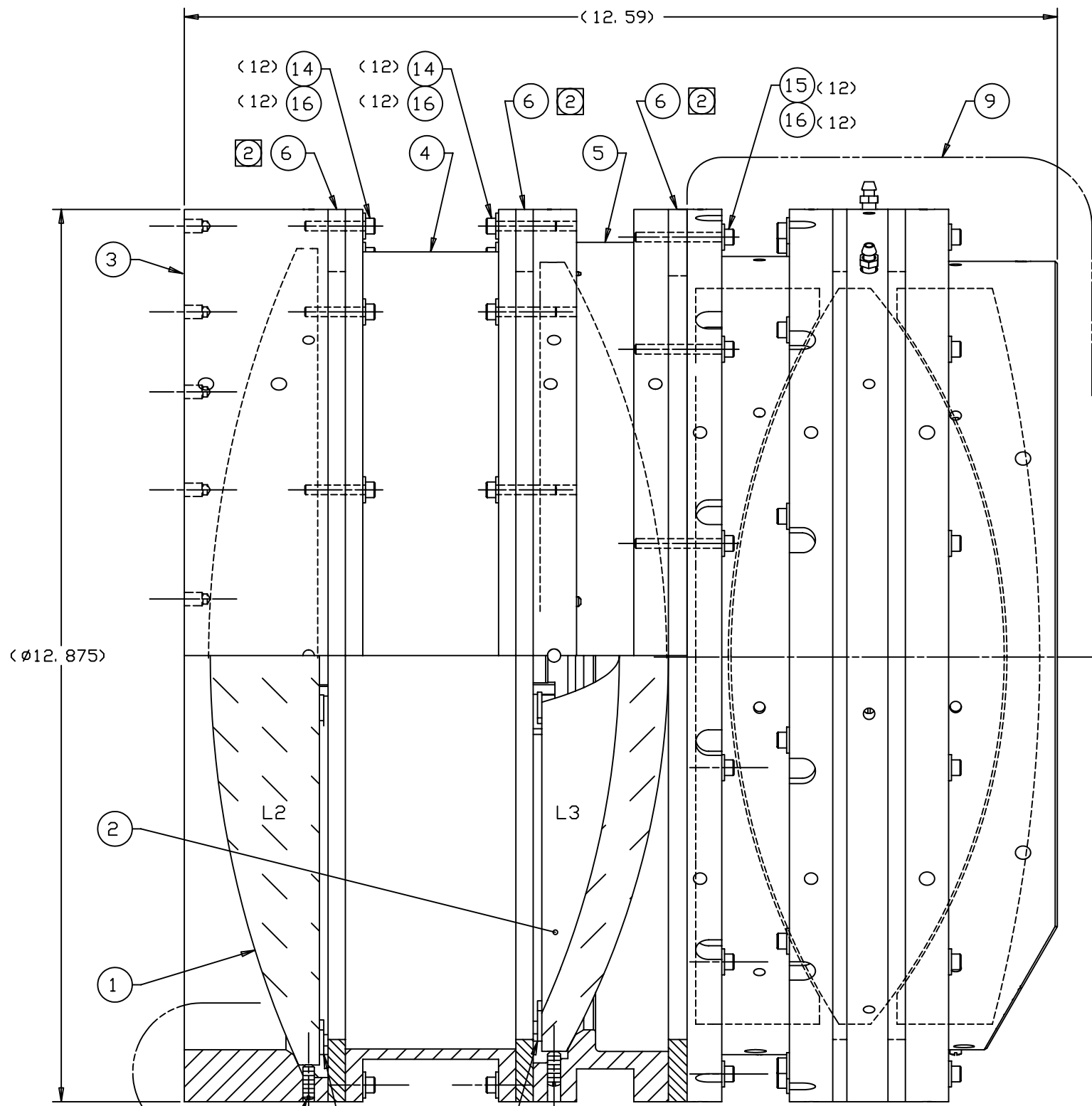


REVISIONS				
LTR	DESCRIPTION	DATE	REVISED BY	APPROVED
A	INITIAL RELEASE	4/27/04	R. NAGY	G. LANDIS
B	UPDATED TO REDESIGNED BEVELED LENS CELLS 2 & 3; REVISED NOTE 3	6/29/04	R. NAGY	M. REED



SEE DETAIL C  
(SHT 3)

(16) 17  
(6) <math>\langle \text{LENS CLIP} \rangle</math> 7

(6) 13  
SEE DETAIL D  
(SHT 3)

8 (6) <math>\langle \text{LENS CLIP} \rangle</math>  
13 (6)

SEE DETAIL D  
(SHT 3)

**SECTION A-A**  
(THIS SHT)  
SCALE 1:1  
ROTATED 7.5° CLOCKWISE;  
ITEM 9 NOT SECTIONED

SCALE 1:1  
A (THIS SHT)  
B (SHT 3)

DO NOT SCALE DRAWING		THIS DRAWING CREATED IN:		Steward Observatory, University of Arizona 933 N. Cherry Avenue, Tucson, AZ 85721 (520)621-7659			
INTERPRET DIMENSIONS AND TOLERANCES IN ACCORDANCE WITH ASME Y14.5M-94		ACAD	MECH	IDEAS	DESIGNED BY: D. DEAN	DATE: 12/2/03	CATEGORY: MMT
TOLERANCES UNLESS OTHERWISE SPECIFIED		<input type="checkbox"/>	<input type="checkbox"/>	<input checked="" type="checkbox"/>	DRAWN BY: R. NAGY	12/5/03	PROJECT: MAESTRO
LINEAR					CHECKED BY: G. LANDIS	4/14/04	TITLE: LENS CAN
ANGULAR					APPROVED: S. MATHEWS	4/27/04	LENS 2 TO 6 ASSEMBLY
.X = NA .XX = NA .XXX = NA					APPROVED: M. REED	4/27/04	
DIAMETRICAL SEE SPEC S-002					APPROVED: J. BECHTOLD	4/27/04	
DIMENSIONS ARE IN INCHES / DIMENSIONS IN [ ] ARE METRIC					APPROVED:		
MATERIAL	-	13194	MMT				PLOT SIZE SCALE: D -
FINISH	-	NEXT ASSY	USED ON				DRAWING NUMBER: 13473
ASSEMBLY APPLICATION				CURRENT TIME/DATE/FILE LOCATION: DRAWING ARCHIVE LOCATION: <a href="http://dsv.inci.as.arizona.edu/acad/default.html">http://dsv.inci.as.arizona.edu/acad/default.html</a>			
							REVISION: B
							SHEET 2 OF 3