

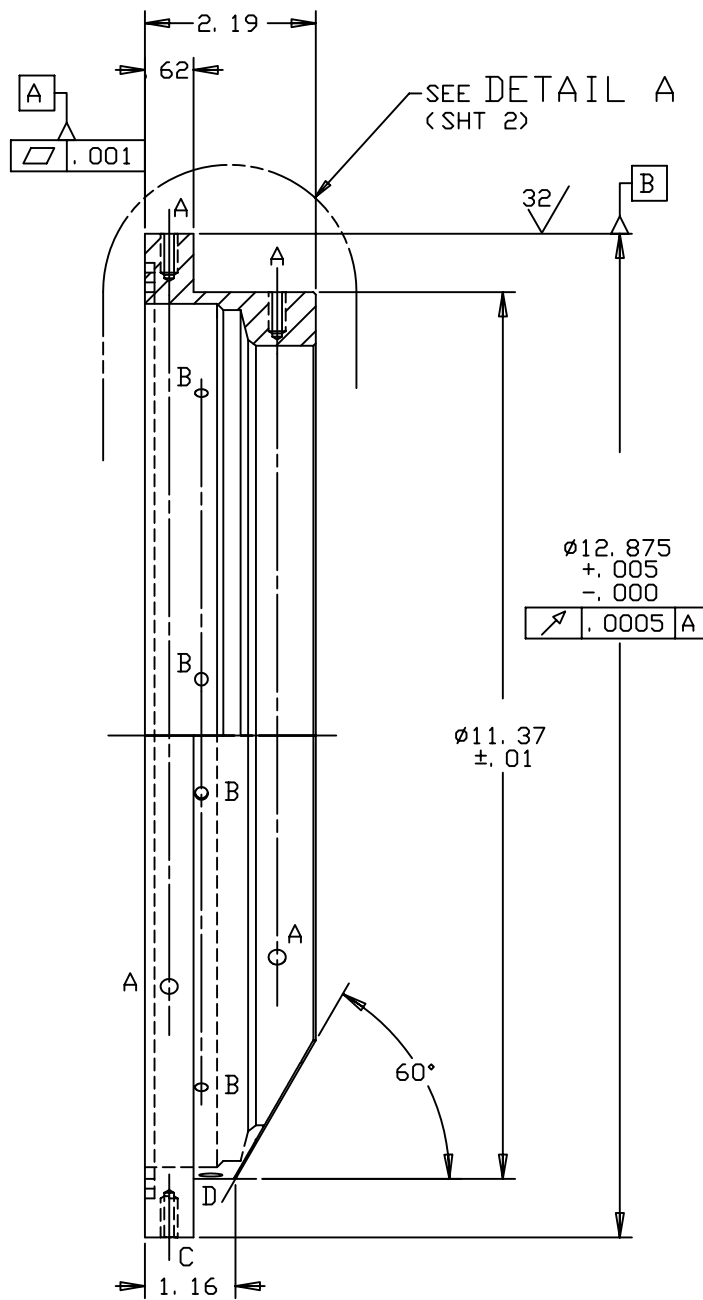
REVISIONS				
LTR	DESCRIPTION	DATE	REVISED BY	APPROVED
A	INITIAL RELEASE	4/27/04	R. NAGY	G. LANDIS
B	INCORPORATED ECD #034 (ADDED Ø10.15 x 38° BEVEL); REVISED DETAIL A & MOVED TO ADDED SHT 2	6/29/04	R. NAGY	M. REED

5X .164-32 UNC-2B ∇ .43
DO NOT BREAK THRU;
EQUALLY SPACED AT 120°;
INDICATED "C"

8X .164-32 UNC-2B
THRU INTO BORE
EQUALLY SPACED
AT 45°;
INDICATED "B"

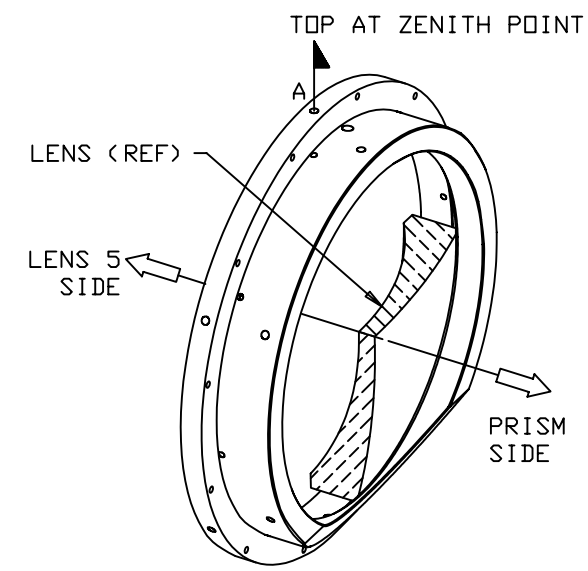
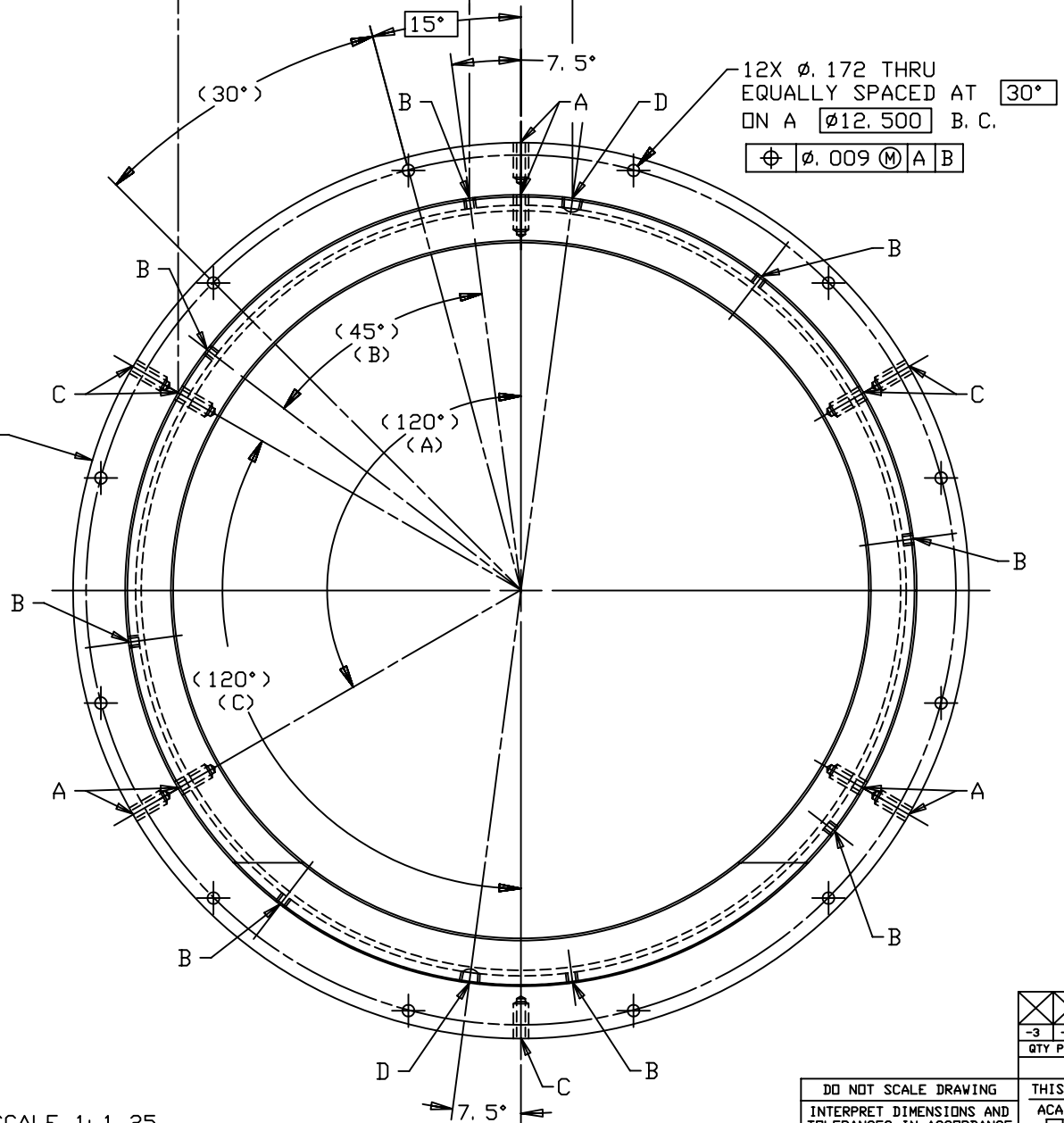
2X .062-27 NPT THRU INTO BORE
SPACED AT 180°; INDICATED "D"

DO NOT BREAK THRU;
EQUALLY SPACED AT 120°;
INDICATED "A"



Ø12.875
+.005
-.000
/ .0005 A

Ø11.37
±.01



SCALE 1:1.25

NOTES: UNLESS OTHERWISE SPECIFIED

- BREAK SHARP EDGES & DEBURR.
- MACHINED SURFACE FINISH TO BE 125 RMS OR BETTER.
- MACHINED FILLETS TO BE .015 MAX.
- INSTALL INSERTS PER MANUFACTURER'S DIRECTIONS.
- ANODIZE PER MIL-A-8625, TYPE II, CLASS 2, BLACK.
- DIMENSIONS ARE AFTER ANODIZING.
- BEFORE ANODIZING, PERMANENTLY MARK THE NUMBER "6" WITH .18-.25 HIGH CHARACTERS APPROXIMATELY WHERE SHOWN.

6	90296A112	SCREW-LOCK HELICAL INSERT, .164-32 UNC x .246 LG, SST	MCMaster-CARR OR EQUIV.	1
-3	-2	-1	PART NUMBER	ITEM NO.
QTY PER ASSY		PART DESCRIPTION		MANUFACTURER or MAT'L SPEC

LIST OF MATERIALS				
Steward Observatory, University of Arizona 933 N. Cherry Avenue, Tucson, AZ 85721 (520)621-7659				
DESIGNED BY: D. DEAN	DATE: 9/3/03	CATEGORY: MMT		
DRAWN BY: R. NAGY	DATE: 9/9/03	PROJECT: MAESTRO		
CHECKED BY: G. LANDIS	DATE: 4/14/04	TITLE: LENS CAN-LENS 2 TO 6 LENS 6 CELL		
APPROVED: S. MATHEWS	DATE: 4/27/04			
APPROVED: M. REED	DATE: 4/27/04			
APPROVED: J. BECHTOLD	DATE: 4/27/04	PLOT SIZE: D	SCALE: -	DRAWING NUMBER: 13203
APPROVED:				REVISION: B
FINISH 5		ASSEMBLY APPLICATION		CURRENT TIME/DATE/FILE LOCATION: DRAWING ARCHIVE LOCATION: http://devinci.as.arizona.edu/acad/default.html