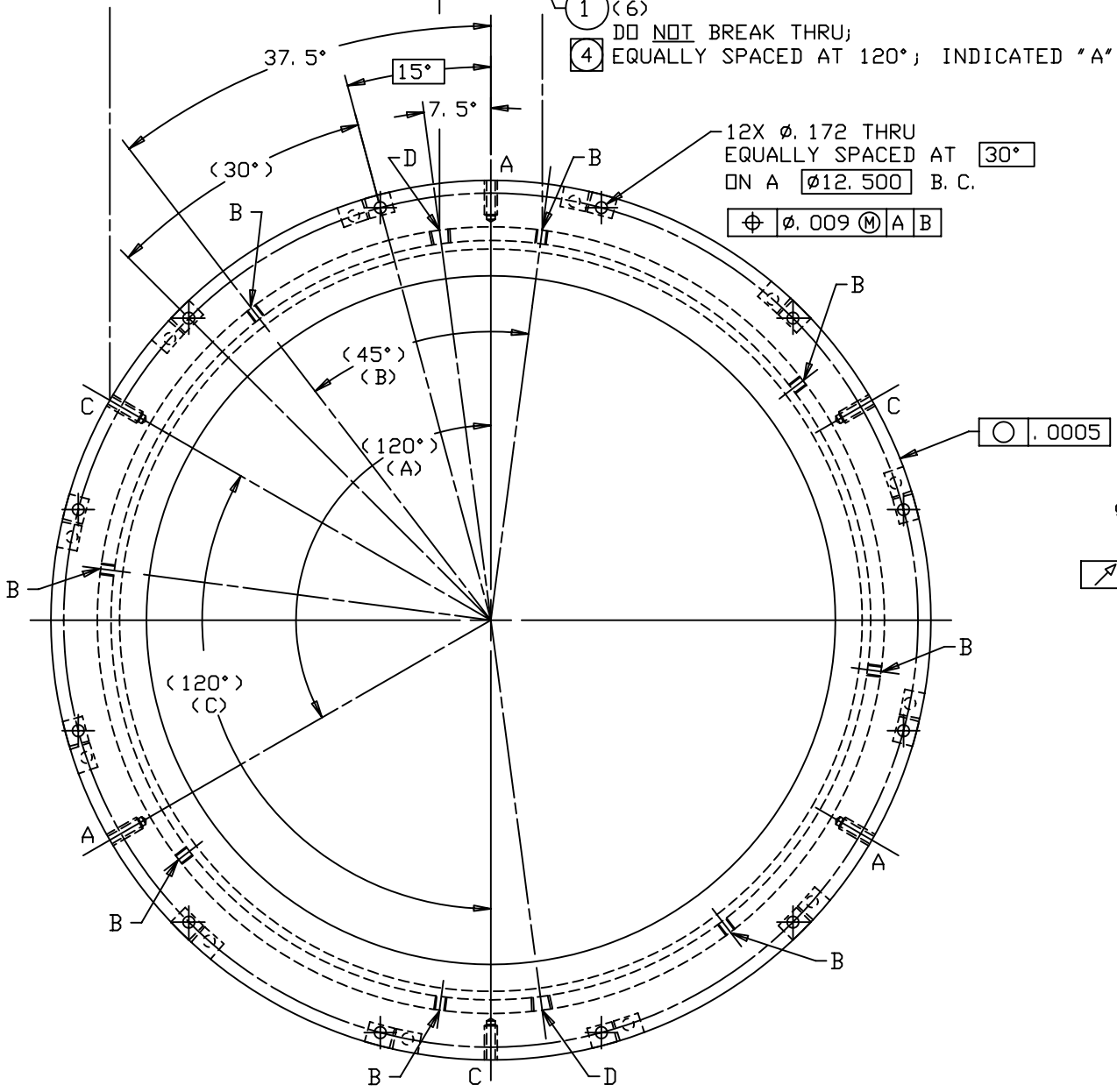
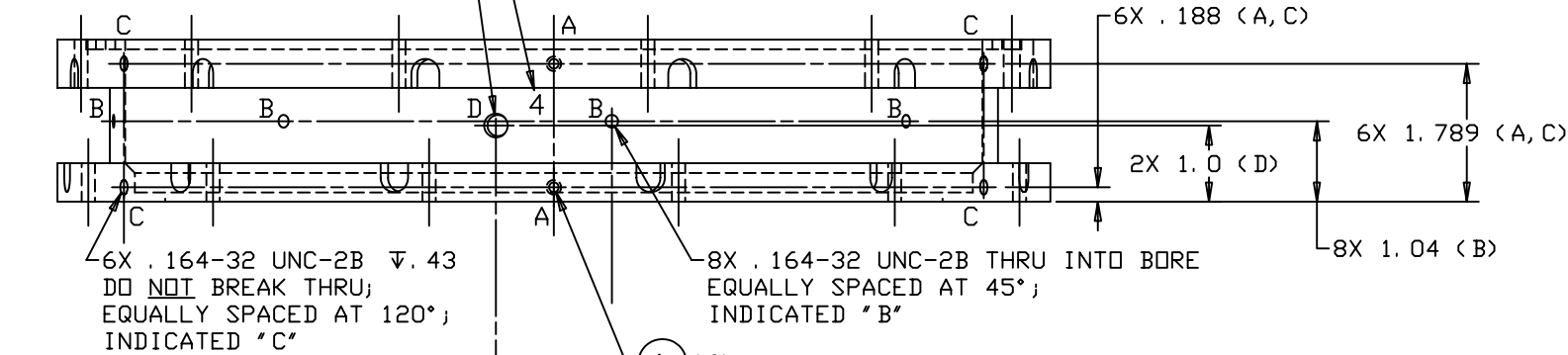
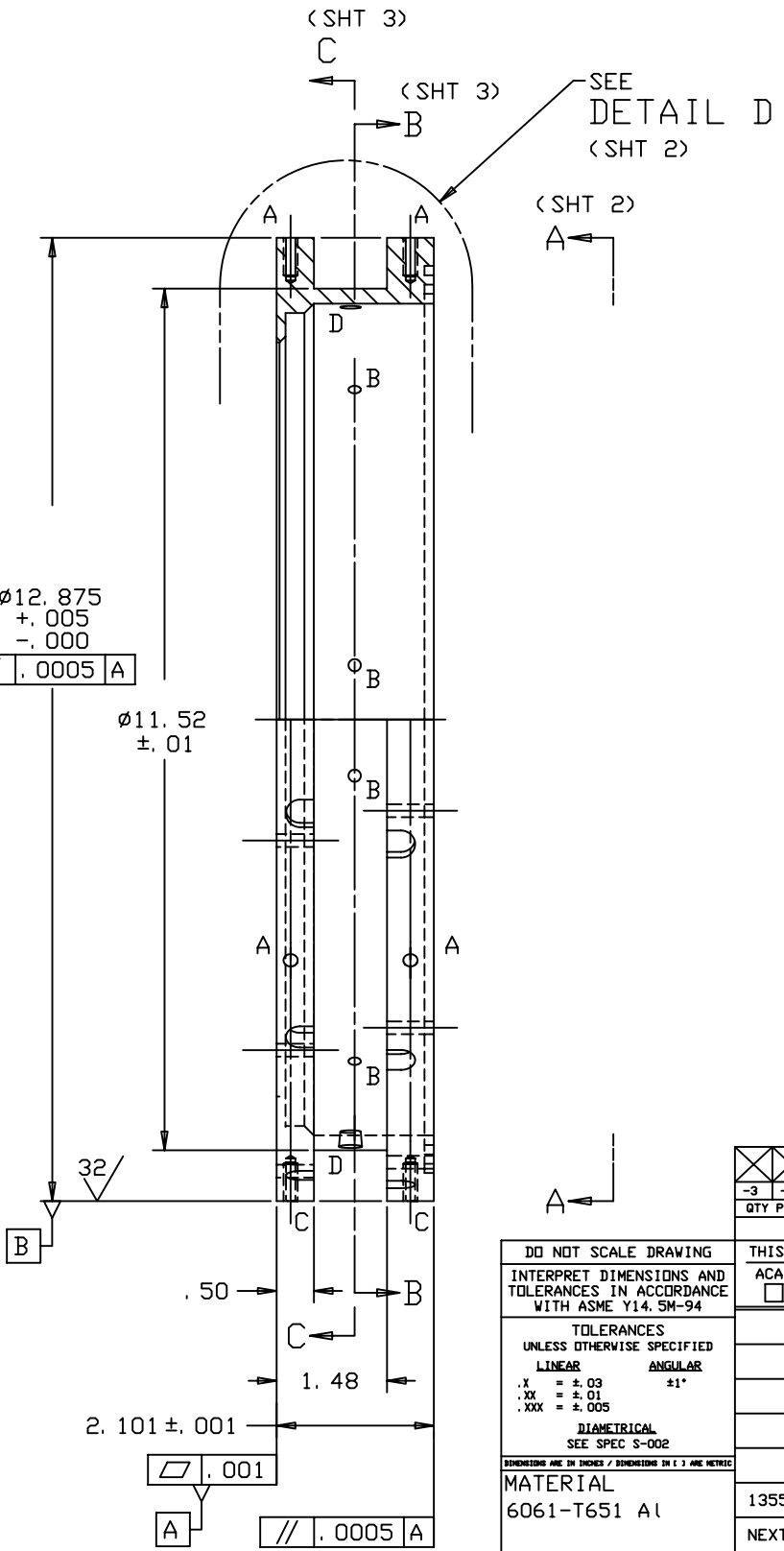


2X .062-27 NPT THRU INTO BORE
SPACED AT 180°; INDICATED "D"

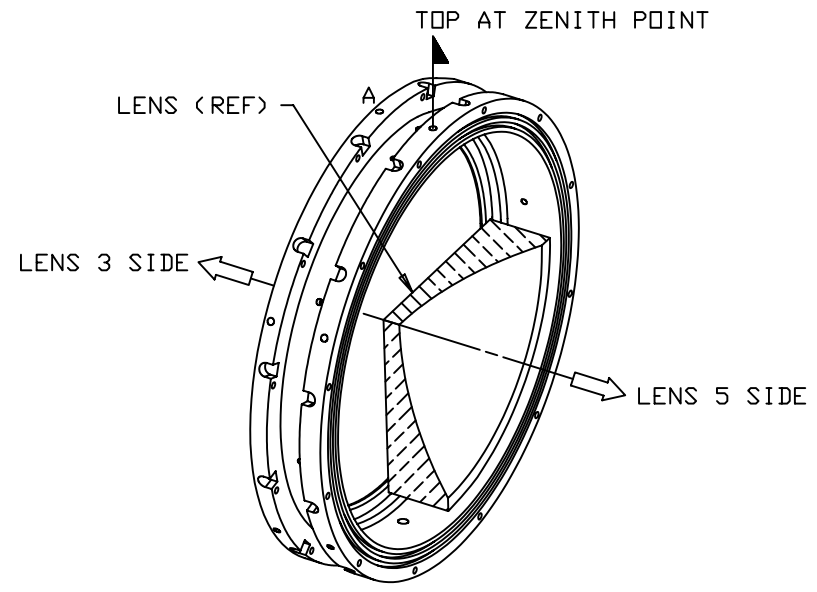


- NOTES: UNLESS OTHERWISE SPECIFIED
- BREAK SHARP EDGES & DEBURR.
 - MACHINED SURFACE FINISH TO BE 125 RMS OR BETTER.
 - MACHINED FILLETS TO BE .015 MAX.
 - INSTALL INSERTS PER MANUFACTURER'S DIRECTIONS.
 - ANODIZE PER MIL-A-8625, TYPE II, CLASS 2, BLACK.
 - DIMENSIONS ARE PRIOR TO ANODIZING.
 - BEFORE ANODIZING, PERMANENTLY MARK THE NUMBER "4" WITH .18-.25 HIGH CHARACTERS APPROXIMATELY WHERE SHOWN.

SCALE 1: 1.25



REVISIONS				
LTR	DESCRIPTION	DATE	REVISED BY	APPROVED
A	INITIAL RELEASE	4/27/04	R. NAGY	G. LANDIS
B	INCORPORATED ECD #033 (ADDED 45° x .08); REVISED DETAIL D & MOVED OTHER VIEWS TO ADDED SHT 3	6/29/04	R. NAGY	M. REED
C	SHT 1 ONLY (SHT 2 & 3 REMAIN AT REV B); ADDED "C" HOLE SIZE NOT CALLED OUT (NOT A DESIGN CHANGE)	7/7/04	R. NAGY	G. LANDIS



6	90296A112	SCREW-LOCK HELICAL INSERT, .164-32 UNC x .246 LG, SST	MCMaster-CARR OR EQUIV.	1
-3	-2	-1	PART NUMBER	PART DESCRIPTION
LIST OF MATERIALS				
DO NOT SCALE DRAWING				
INTERPRET DIMENSIONS AND TOLERANCES IN ACCORDANCE WITH ASME Y14.5M-94				
TOLERANCES UNLESS OTHERWISE SPECIFIED				
LINEAR .X = ±.03				
ANGULAR .XX = ±.01				
.XXX = ±.005				
DIAMETRICAL SEE SPEC S-002				
MATERIAL 6061-T651 A1				
FINISH 5				
THIS DRAWING CREATED IN: ACAD MECH IDEAS				
DESIGNED BY: D. DEAN DATE: 9/3/03 CATEGORY: MMT				
DRAWN BY: R. NAGY 9/10/03 PROJECT: MAESTRO				
CHECKED BY: G. LANDIS 4/14/04 TITLE: LENS CAN-LENS 2 TO 6 LENS 4 CELL				
APPROVED: S. MATHEWS 4/27/04				
APPROVED: M. REED 4/27/04				
APPROVED: J. BECHTOLD 4/27/04				
APPROVED:				
CURRENT TIME/DATE/FILE LOCATION:				
DRAWING ARCHIVE LOCATION: http://dsv1nc1.as.arizona.edu/acad/default.html				
13550	MMT	PLOT SIZE: D	SCALE: -	DRAWING NUMBER: 13201
NEXT ASSY	USED ON			REVISION: C
ASSEMBLY APPLICATION				SHEET 1 OF 3