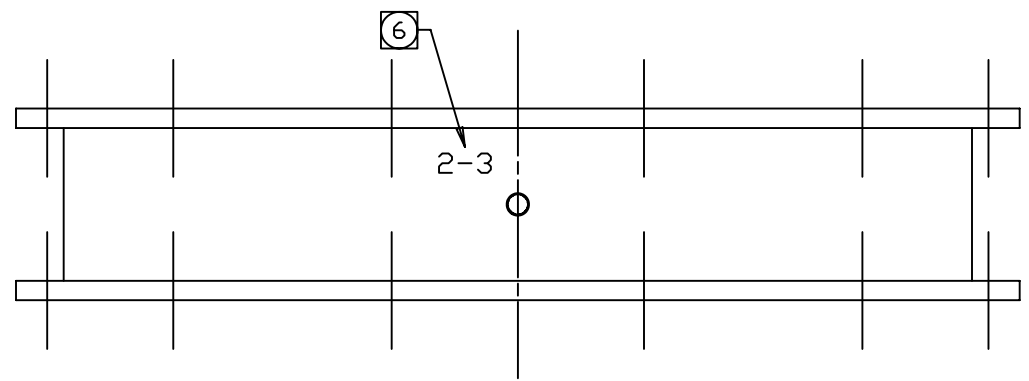
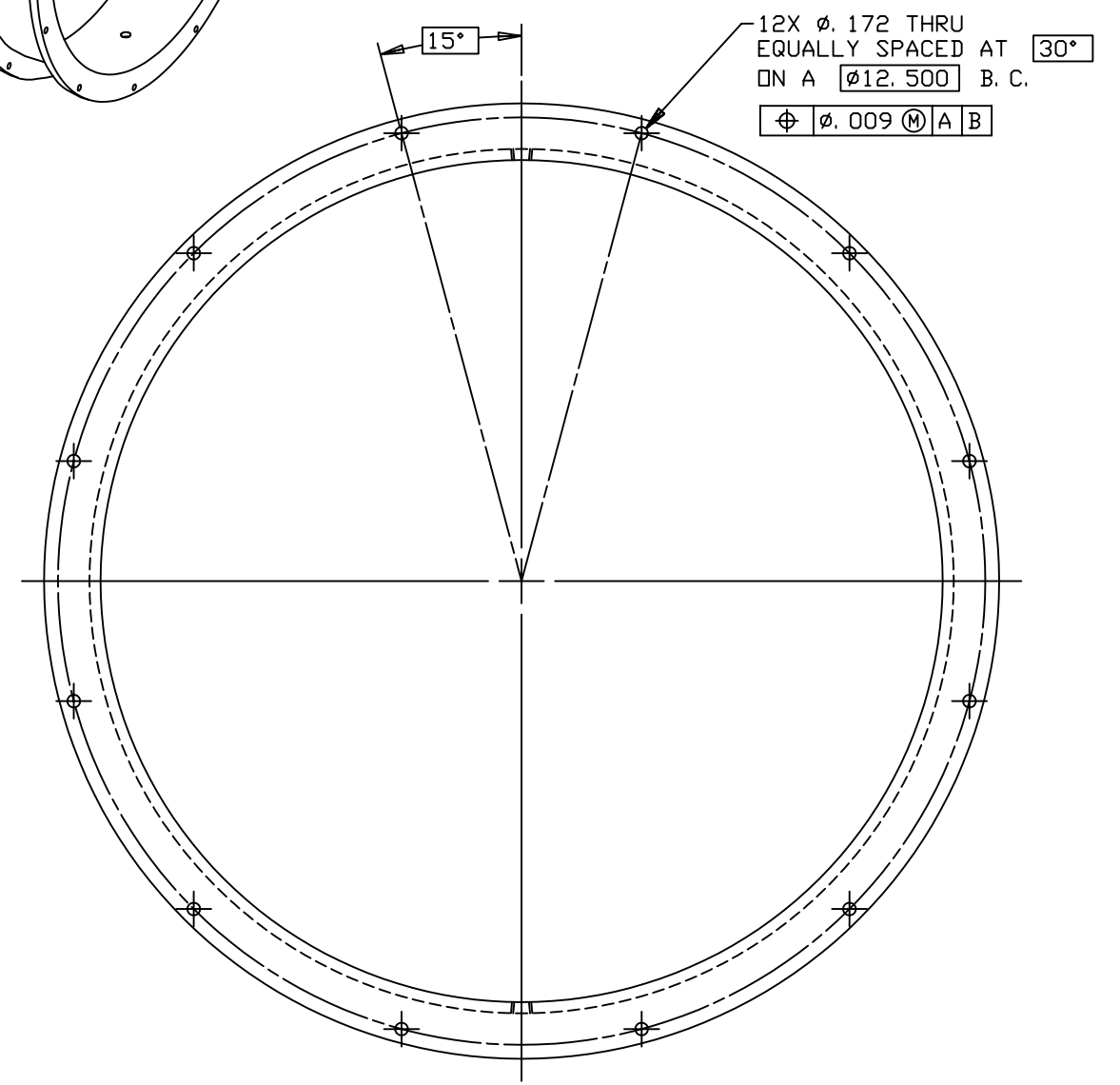
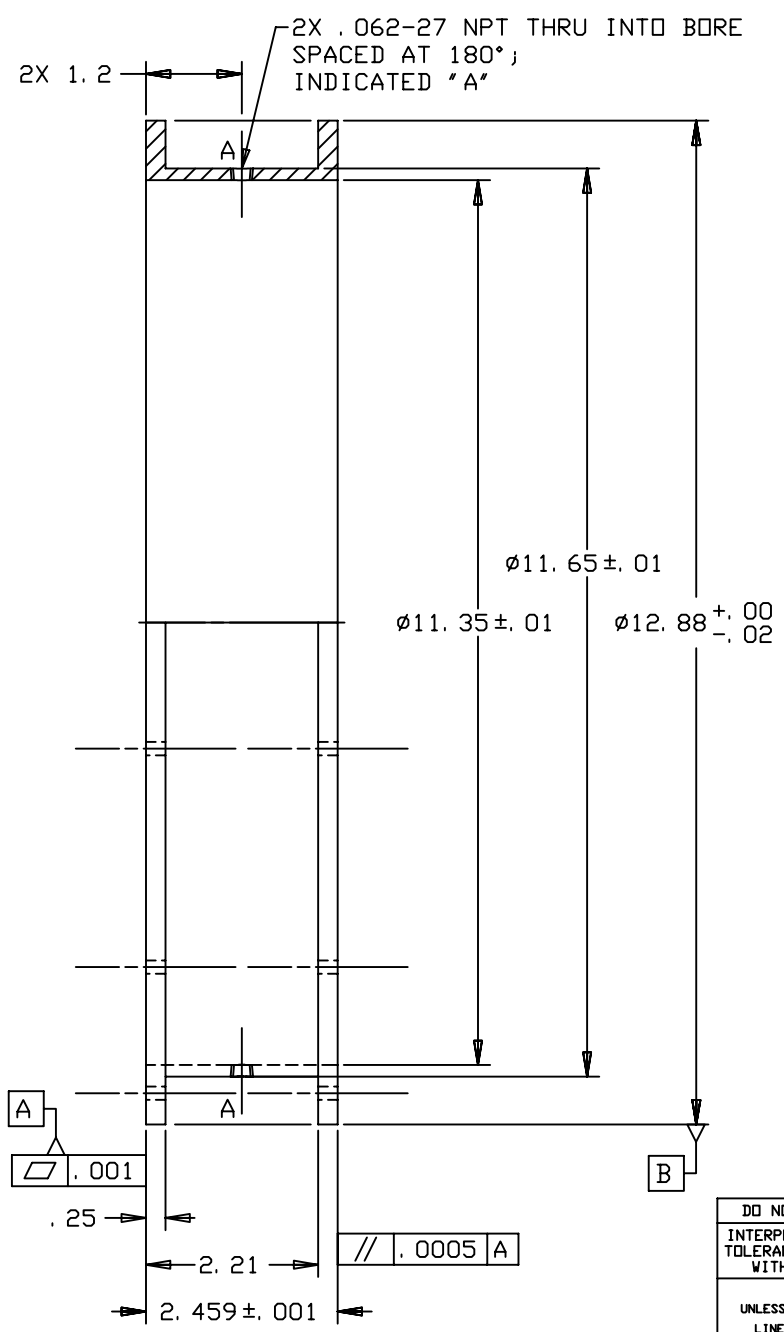
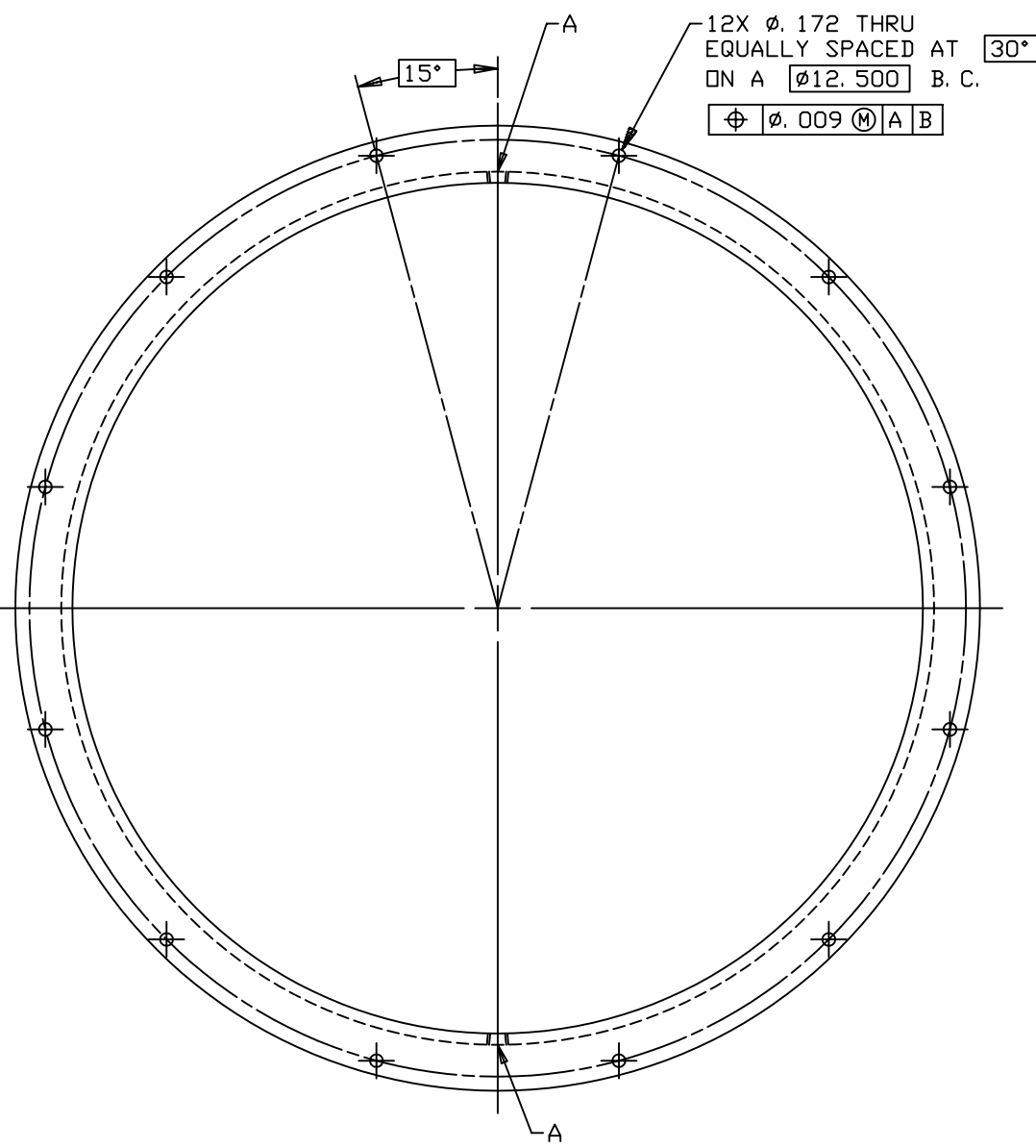
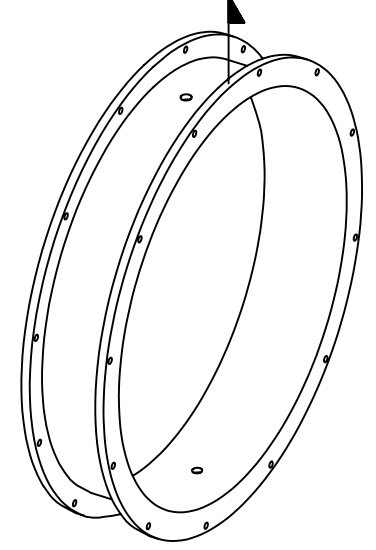


REVISIONS				
LTR	DESCRIPTION	DATE	REVISED BY	APPROVED
A	INITIAL RELEASE	4/27/04	R. NAGY	G. LANDIS



TOP AT ZENITH POINT



- NOTES:
- BREAK SHARP EDGES & DEBURR.
 - MACHINED SURFACE FINISH TO BE 125 RMS OR BETTER.
 - MACHINED FILLETS TO BE .015 MAX.
 - ANODIZE PER MIL-A-8625, TYPE II, CLASS 2, BLACK.
 - DIMENSIONS ARE PRIOR TO ANODIZING.
 - BEFORE ANODIZING, PERMANENTLY MARK "2-3" WITH .18-.25 HIGH CHARACTERS APPROXIMATELY WHERE SHOWN.

DO NOT SCALE DRAWING	THIS DRAWING CREATED IN:	Steward Observatory, University of Arizona 933 N. Cherry Avenue, Tucson, AZ 85721 (520)621-7659			
INTERPRET DIMENSIONS AND TOLERANCES IN ACCORDANCE WITH ASME Y14.5M-94	ACAD <input type="checkbox"/> MECH <input type="checkbox"/> IDEAS <input checked="" type="checkbox"/>	DESIGNED BY: D. DEAN	DATE: 9/3/03	CATEGORY: MMT	
TOLERANCES UNLESS OTHERWISE SPECIFIED: LINEAR .X = ± .03 .XX = ± .01 .XXX = ± .005 ANGULAR ± 1°		DRAWN BY: R. NAGY	9/17/03	PROJECT: MAESTRO	
DIAMETRICAL SEE SPEC S-002		CHECKED BY: G. LANDIS	4/14/04	TITLE: LENS CAN-LENS 2 TO 6 LENS CELL 2 TO 3 SPACER SPOOL	
MATERIAL 6061-T651 Al	13473 MMT	APPROVED: S. MATHEWS	4/27/04		
FINISH ϕ 4	NEXT ASSY USED ON	APPROVED: M. REED	4/27/04		
ASSEMBLY APPLICATION		APPROVED: J. BECHTOLD	4/27/04	PLOT SIZE SCALE: D 1/1.25	DRAWING NUMBER: 13199
		CURRENT TIME/DATE/FILE LOCATION: DRAWING ARCHIVE LOCATION: http://devinci.as.arizona.edu/acad/default.html			REVISION: A
					SHEET 1 OF 1