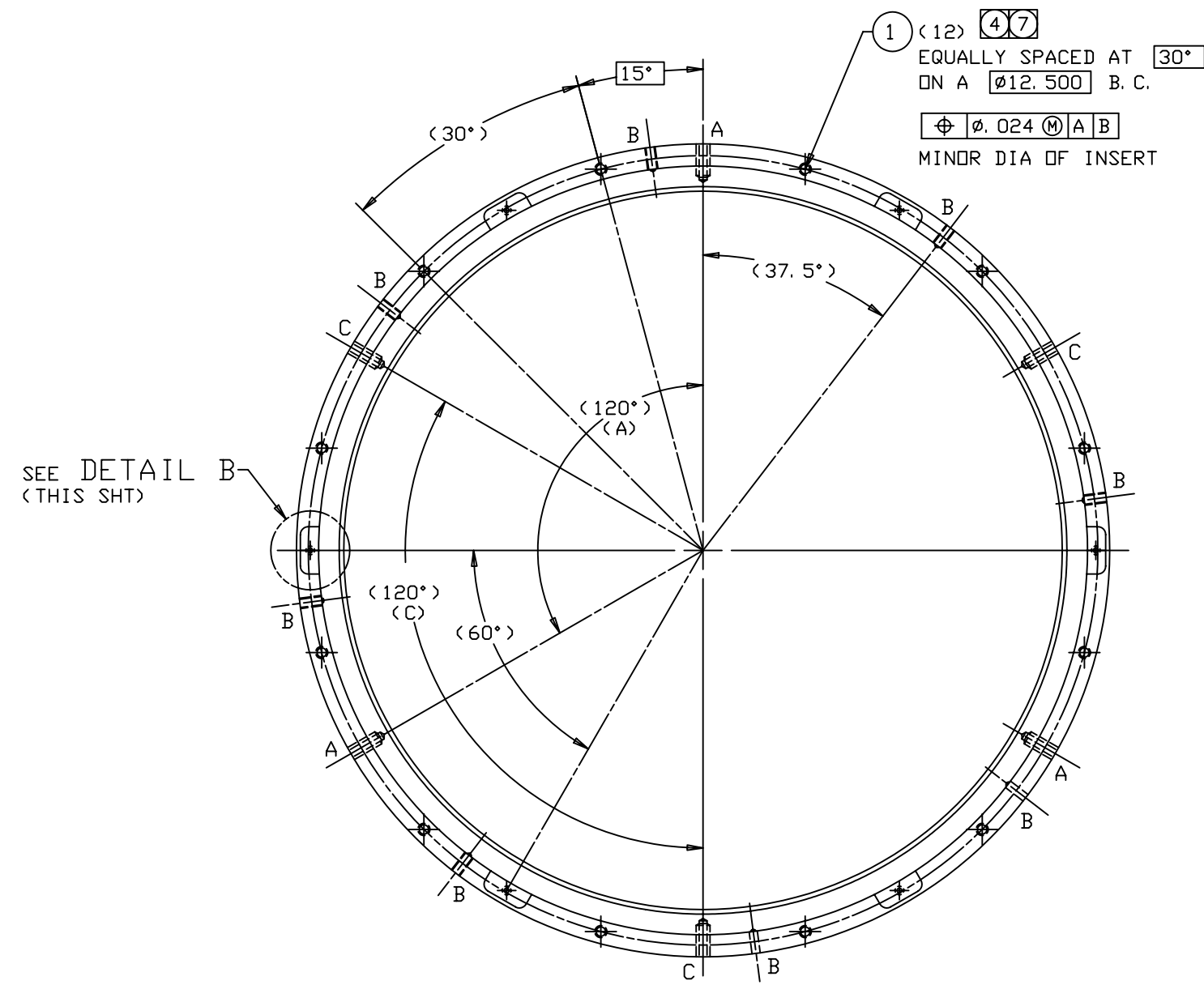
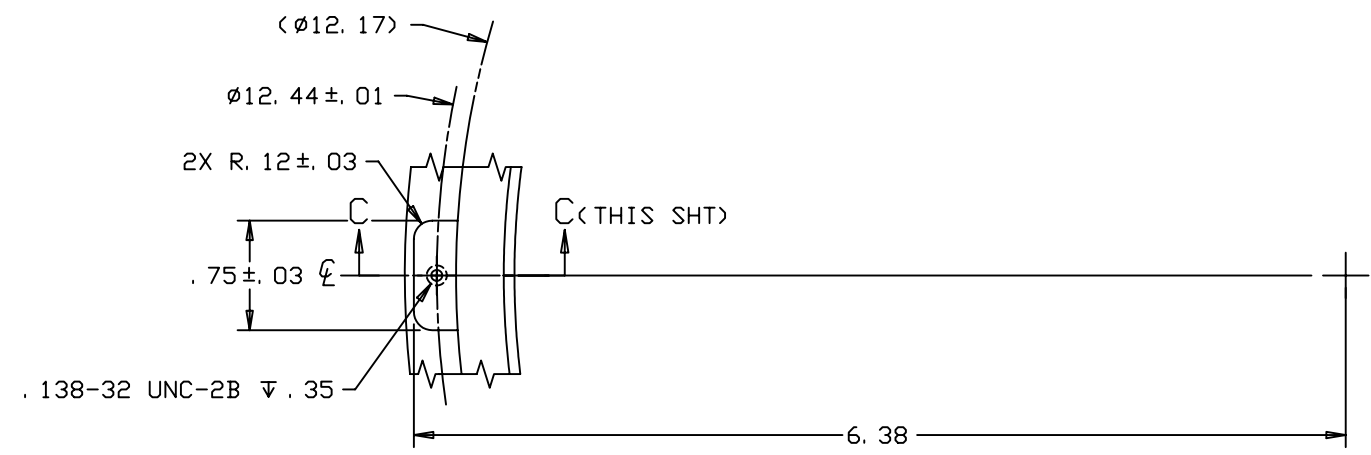


REVISIONS				
LTR	DESCRIPTION	DATE	REVISED BY	APPROVED
A	INITIAL RELEASE	4/27/04	R. NAGY	G. LANDIS
B	INCORPORATED ECO #031 (ADDED Ø11.52 x 33° BEVEL)	6/29/04	R. NAGY	M. REED

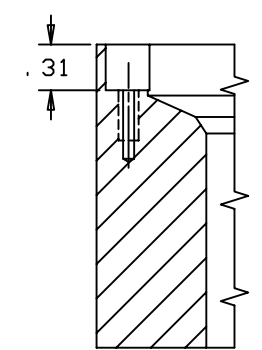


VIEW A-A  
(SHT 1)  
SCALE 1:1.25

SEE DETAIL B  
(THIS SHT)



(6X) DETAIL B  
(THIS SHT)  
SCALE 1.5:1  
NOTCH & HOLE EQUALLY SPACED AT 60°



(6X) SECTION C-C  
(THIS SHT)  
SCALE 1.5:1

DO NOT SCALE DRAWING	THIS DRAWING CREATED IN:	Steward Observatory, University of Arizona 933 N. Cherry Avenue, Tucson, AZ 85721 (520)621-7659			
INTERPRET DIMENSIONS AND TOLERANCES IN ACCORDANCE WITH ASME Y14.5M-94	ACAD <input type="checkbox"/> MECH <input type="checkbox"/> IDEAS <input checked="" type="checkbox"/>	DESIGNED BY: D. DEAN	DATE: 9/3/03	CATEGORY: MMT	
TOLERANCES UNLESS OTHERWISE SPECIFIED LINEAR .X = .01 .XX = .01 .XXX = .005 ANGULAR ± 1° DIAMETRICAL SEE SPEC S-002		DRAWN BY: R. NAGY	9/15/03	PROJECT: MAESTRO	
DIMENSIONS ARE IN INCHES / DIMENSIONS IN [ ] ARE METRIC		CHECKED BY: G. LANDIS	4/14/04	TITLE: LENS CAN-LENS 2 TO 6 LENS 2 CELL	
MATERIAL 6061-T651 Al	13473 MMT	APPROVED: S. MATHEWS	4/27/04		
FINISH (5)	NEXT ASSY USED ON	APPROVED: M. REED	4/27/04		
ASSEMBLY APPLICATION		APPROVED: J. BECHTOLD	4/27/04	PLOT SIZE SCALE: D -	DRAWING NUMBER: 13198
		CURRENT TIME/DATE/FILE LOCATION: DRAWING ARCHIVE LOCATION: <a href="http://dev1nc1.as.arizona.edu/acad/default.html">http://dev1nc1.as.arizona.edu/acad/default.html</a>			REVISION: B