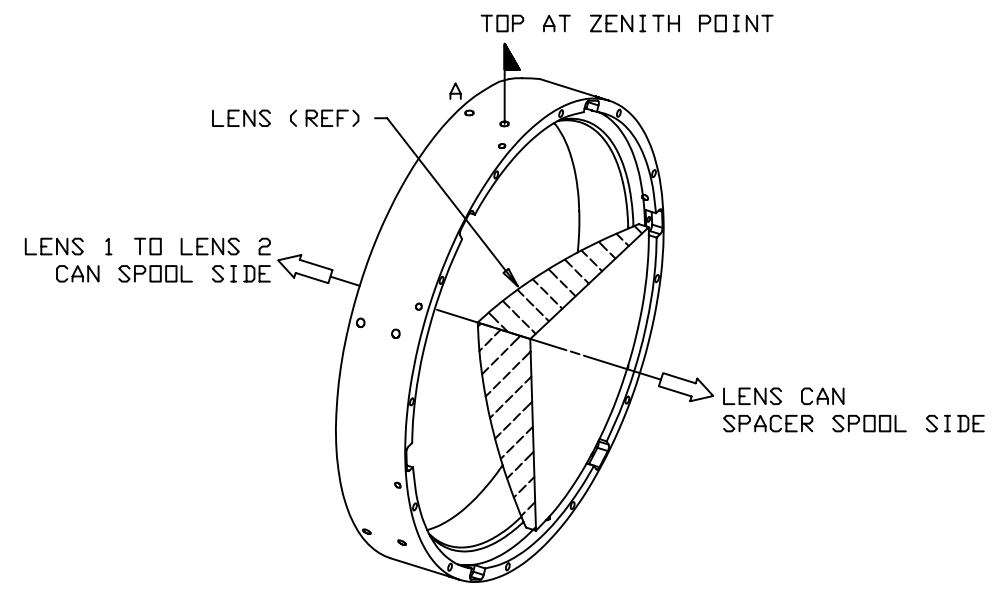
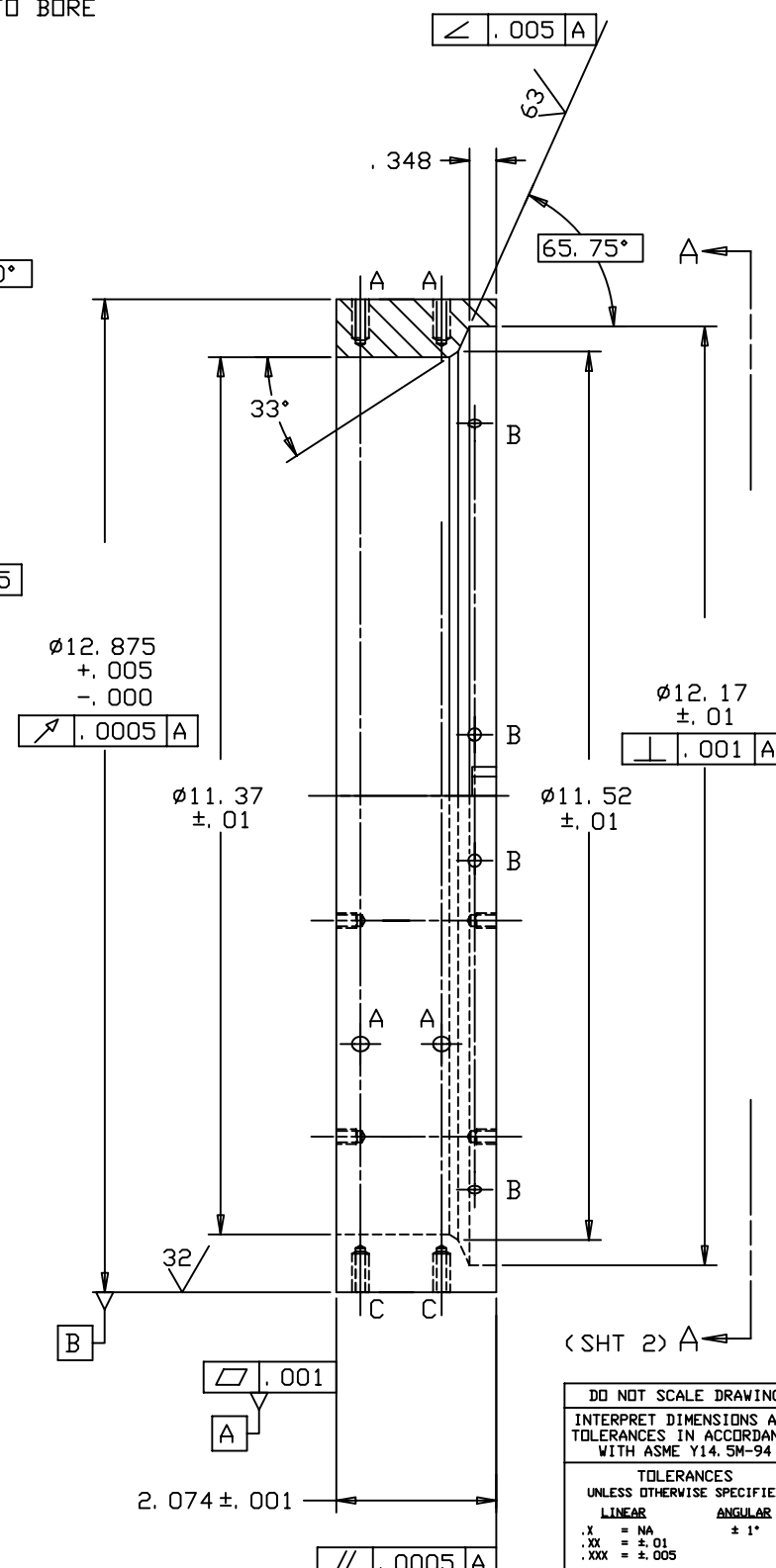
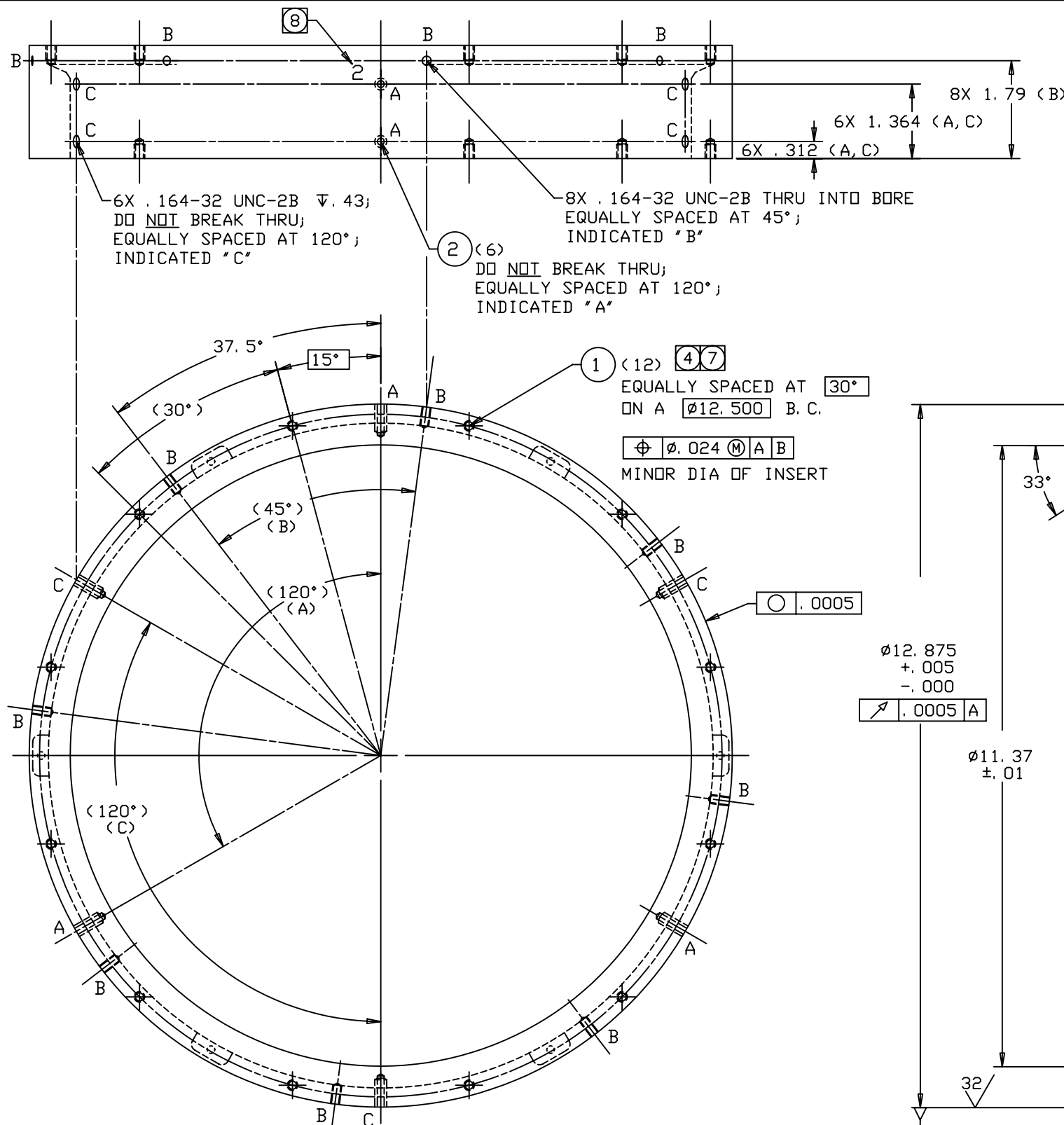


REVISIONS				
LTR	DESCRIPTION	DATE	REVISED BY	APPROVED
A	INITIAL RELEASE	4/27/04	R. NAGY	G. LANDIS
B	INCORPORATED ECD #031 (ADDED Ø11.52 x 33° BEVEL)	6/29/04	R. NAGY	M. REED



- NOTES: UNLESS OTHERWISE SPECIFIED
- BREAK SHARP EDGES & DEBURR.
 - MACHINED SURFACE FINISH TO BE 125 RMS OR BETTER.
 - MACHINED FILLETS TO BE .015 MAX.
 - INSTALL INSERTS PER MANUFACTURER'S RECOMMENDATIONS.
 - ANODIZE PER MIL-A-8625, TYPE II, CLASS 2, BLACK.
 - DIMENSIONS ARE PRIOR TO ANODIZING.
 - .46 MIN DRILL DEPTH REQUIRED FOR NOTED INSERT.
 - BEFORE ANODIZING, PERMANENTLY MARK THE NUMBER "2" WITH .18-.25 HIGH CHARACTERS APPROXIMATELY WHERE SHOWN.

QTY PER ASSY	PART NUMBER	PART DESCRIPTION	MANUFACTURER or MAT'L SPEC	ITEM NO.
6	90296A112	SCREW-LOCK HELICAL INSERT, .164-32 UNC x .246 LG, SST	MCMaster-CARR OR EQUIV.	2
24	90296A107	SCREW-LOCK HELICAL INSERT, .138-32 UNC x .207 LG, SST	MCMaster-CARR OR EQUIV.	1

DO NOT SCALE DRAWING
 INTERPRET DIMENSIONS AND TOLERANCES IN ACCORDANCE WITH ASME Y14.5M-94

THIS DRAWING CREATED IN:
 ACAD MECH IDEAS

TOLERANCES UNLESS OTHERWISE SPECIFIED:
 LINEAR: .X = NA, .XX = ±.01, .XXX = ±.005
 ANGULAR: ± 1°
 DIAMETRICAL: SEE SPEC S-002

MATERIAL: 6061-T651 A1

FINISH: 5

ASSEMBLY APPLICATION

Steward Observatory, University of Arizona
 933 N. Cherry Avenue, Tucson, AZ 85721 (520)621-7659

DESIGNED BY: D. DEAN DATE: 9/3/03 CATEGORY: MMT
 DRAWN BY: R. NAGY DATE: 9/15/03 PROJECT: MAESTRO
 CHECKED BY: G. LANDIS DATE: 4/14/04 TITLE: LENS CAN-LENS 2 TO 6 LENS 2 CELL
 APPROVED: S. MATHEWS DATE: 4/27/04
 APPROVED: M. REED DATE: 4/27/04
 APPROVED: J. BECHTOLD DATE: 4/27/04

PLOT SIZE: D SCALE: - DRAWING NUMBER: 13198 REVISION: B

CURRENT TIME/DATE/FILE LOCATION:
 DRAWING ARCHIVE LOCATION: http://devinci.as.arizona.edu/acad/default.html

SHEET 1 OF 2