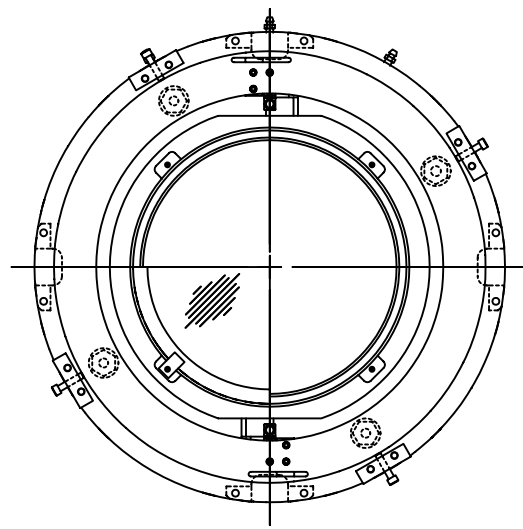
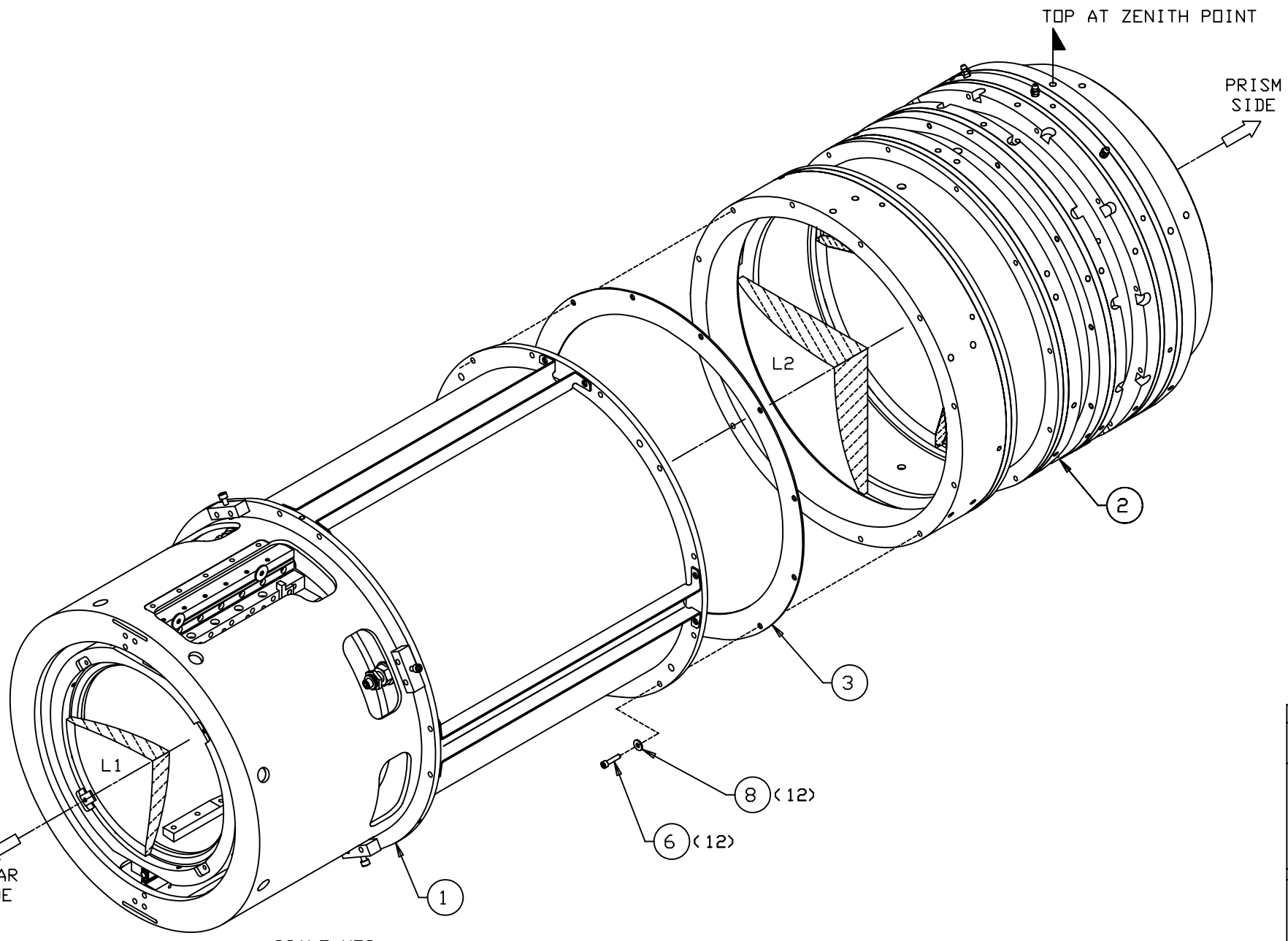
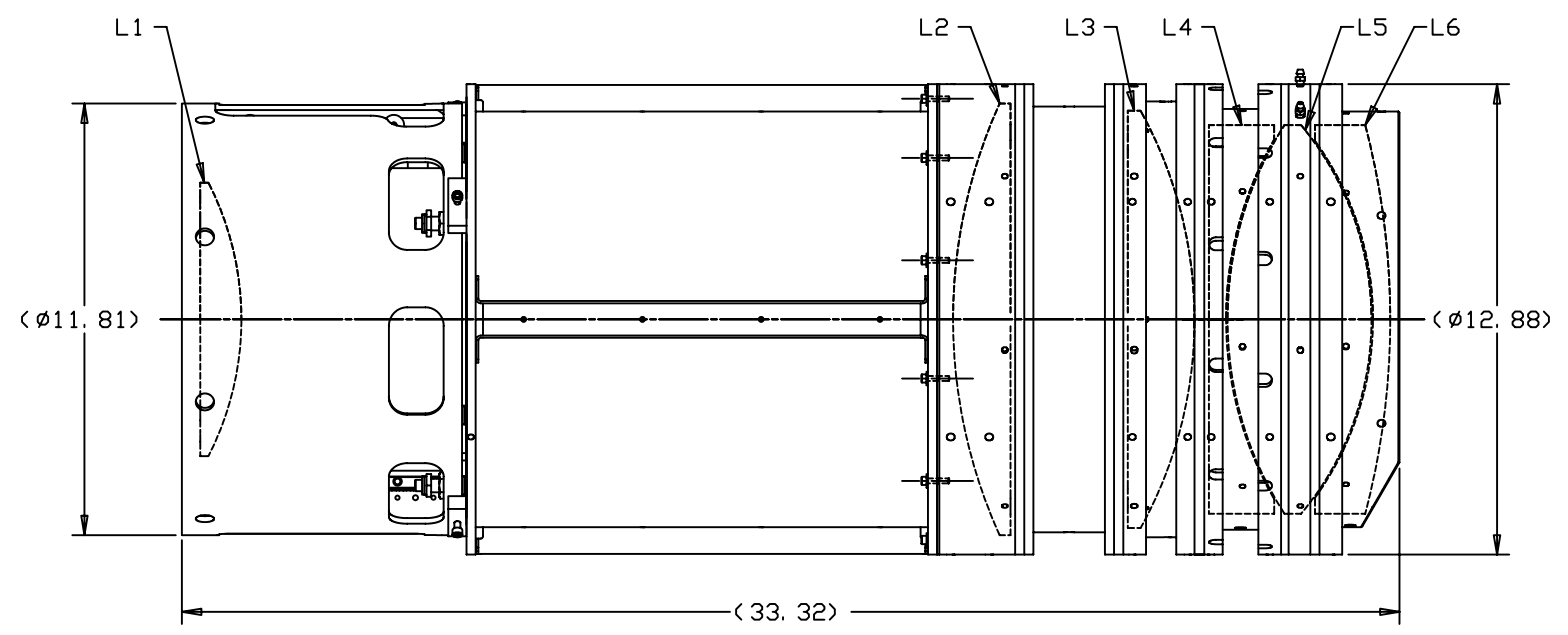


REVISIONS				
LTR	DESCRIPTION	DATE	REVISED BY	APPROVED
A	INITIAL RELEASE	9/22/04	R. NAGY	G. LANDIS



SCALE 3: 8



SCALE NTS

NOTES:

- REQUIRED DOCUMENTS:
 - 12880 OPTICAL SYSTEM DRAWING
 - SP13549 LENS CAN ALIGNMENT PROCEDURE

QTY PER ASSY	-3	-2	-1	PART NUMBER	PART DESCRIPTION	MANUFACTURER or MAT'L SPEC	ITEM NO.
				12 90126A509	WASHER, FLAT, #6 SAE (.375 OD x .036-.065), LOW-STRENGTH STL, Zn-PLT	McMASTER-CARR	8
							7
				12 91251A150	SHCS, .138-32 UNC-2A x .625 LG, ALLOY STL, BLACK OXIDE	McMASTER-CARR	6
							5
							4
				1 13486	LENS 1 TO 2 SPOOL SPACER		3
				1 13473	LENS 2 TO 6 ASSEMBLY		2
				1 13472	LENS 1 STAGE AND EXTENSION ASSEMBLY		1

LIST OF MATERIALS

DO NOT SCALE DRAWING		THIS DRAWING CREATED IN:		Steward Observatory, University of Arizona 933 N. Cherry Avenue, Tucson, AZ 85721 (520)621-7659			
INTERPRET DIMENSIONS AND TOLERANCES IN ACCORDANCE WITH ASME Y14.5M-94		ACAD	MECH	IDEAS	DESIGNED BY: D. DEAN	DATE: 1/28/04	CATEGORY: MMT
TOLERANCES UNLESS OTHERWISE SPECIFIED		<input type="checkbox"/>	<input type="checkbox"/>	<input checked="" type="checkbox"/>	DRAWN BY: R. NAGY	2/12/04	PROJECT: MAESTRO
LINEAR					CHECKED BY: G. LANDIS	9/22/04	TITLE: LENS CAN
ANGULAR					APPROVED: S. MATHEWS	9/22/04	LENS 1 TO 6 ASSEMBLY
.X = NA					APPROVED: M. REED	9/22/04	
.XX = NA					APPROVED: J. BECHTOLD	9/22/04	
.XXX = NA					APPROVED:		
DIAMETRICAL							
SEE SPEC S-002							
MATERIAL	-		MMT		PLOT SIZE	SCALE:	DRAWING NUMBER:
					D	-	13194
FINISH	-		ASSEMBLY APPLICATION		CURRENT TIME/DATE/FILE LOCATION:		REVISION:
					DRAWING ARCHIVE LOCATION: http://dsv.inci.as.arizona.edu/acad/default.html		A