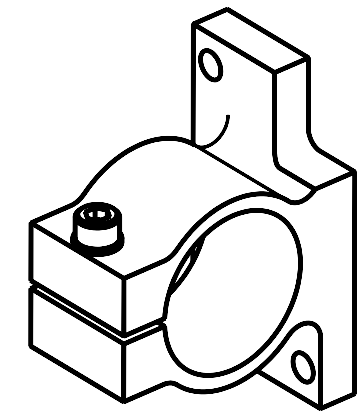
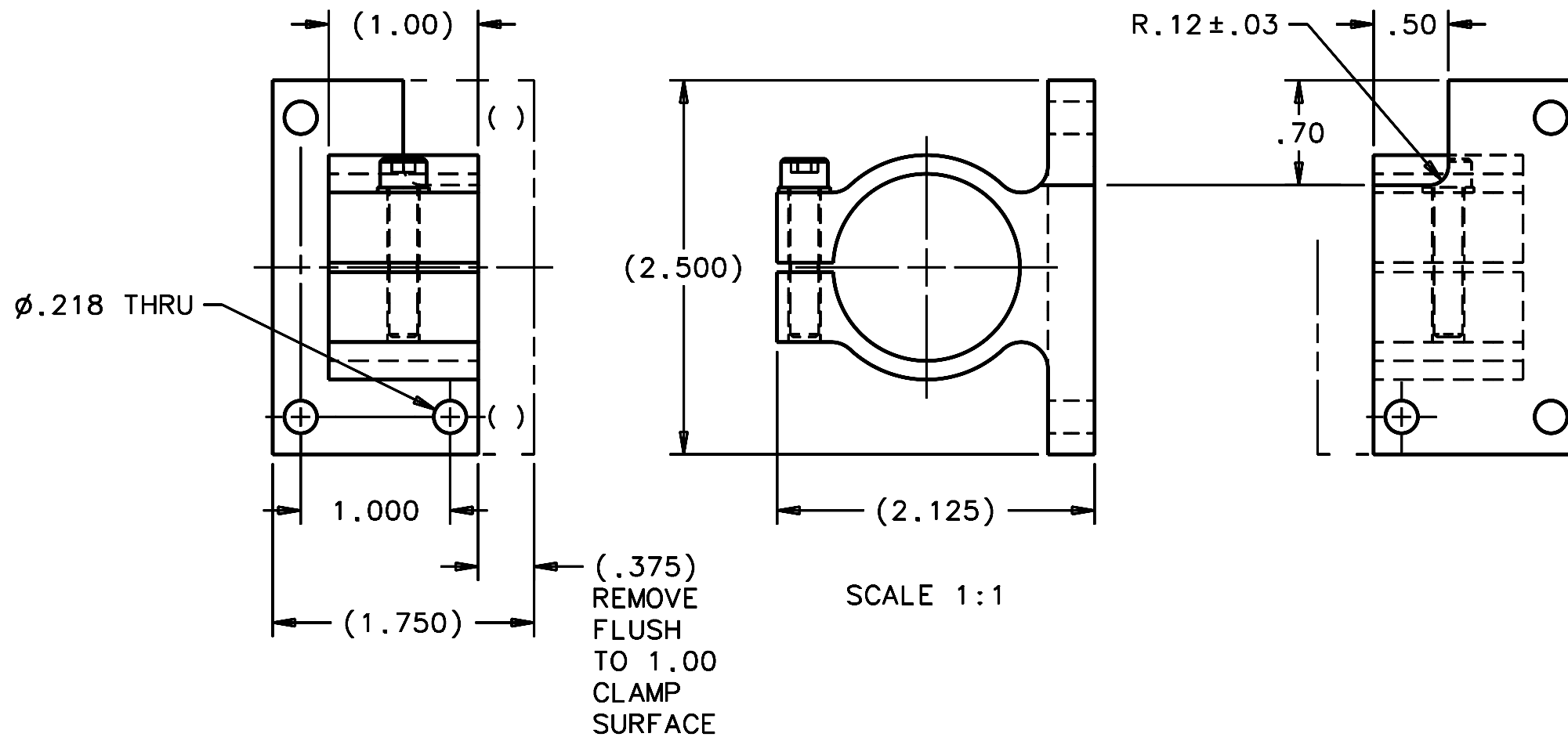


REVISIONS			
LTR	DESCRIPTION	DATE	REVISOR
A	INITIAL RELEASE	6/13/05	R. NAGY



SCALE NTS

NOTES:

1. MODIFY ULTRAMOTION, "B" (BLOCK MOUNT) TUBE MOUNT.
2. BREAK SHARP EDGES & DEBURR HOLE.
3. MACHINED SURFACE FINISH TO BE 125 RMS OR BETTER.
4. QTY REQUIRED: 1

DO NOT SCALE DRAWING INTERPRET DIMENSIONS AND TOLERANCES IN ACCORDANCE WITH ASME Y14.5M-94		THIS DRAWING CREATED IN: ACAD <input type="checkbox"/> MECH <input type="checkbox"/> IDEAS <input checked="" type="checkbox"/>		Steward Observatory, University of Arizona 933 N. Cherry Avenue, Tucson, AZ 85721 (520)621-7659			
TOLERANCES UNLESS OTHERWISE SPECIFIED LINEAR .XX - .03 .XXX - .010 ANGULAR ±1° DIAMETRICAL SEE SPEC S-002		DESIGNED BY: D. DEAN/R. NAGY DATE: 5/12/05		CATEGORY: MMT		PROJECT: MAESTRO	
MATERIAL 1		DRAWN BY: R. NAGY DATE: 5/16/05		CHECKED BY: J. BRENNAN DATE: 6/8/05		TITLE: LENS CAN SUPPORT-LENS 1 STAGE MODIFIED FOCUS MOTOR TUBE MOUNT	
FINISH -		APPROVED BY: J. BECHTOLD DATE: 6/13/05		APPROVED BY: R. WARNER DATE: 6/13/05		DRAWING NUMBER: 14845	
NEXT ASSY USED ON		APPROVED:		APPROVED:		REVISION: A	
ASSEMBLY APPLICATION		CURRENT TIME/DATE/FILE LOCATION:		DRAWING ARCHIVE LOCATION: <a href="http://devinci.cs.arizona.edu/ocod/default.html">http://devinci.cs.arizona.edu/ocod/default.html</a>		SHEET 1 OF 1	