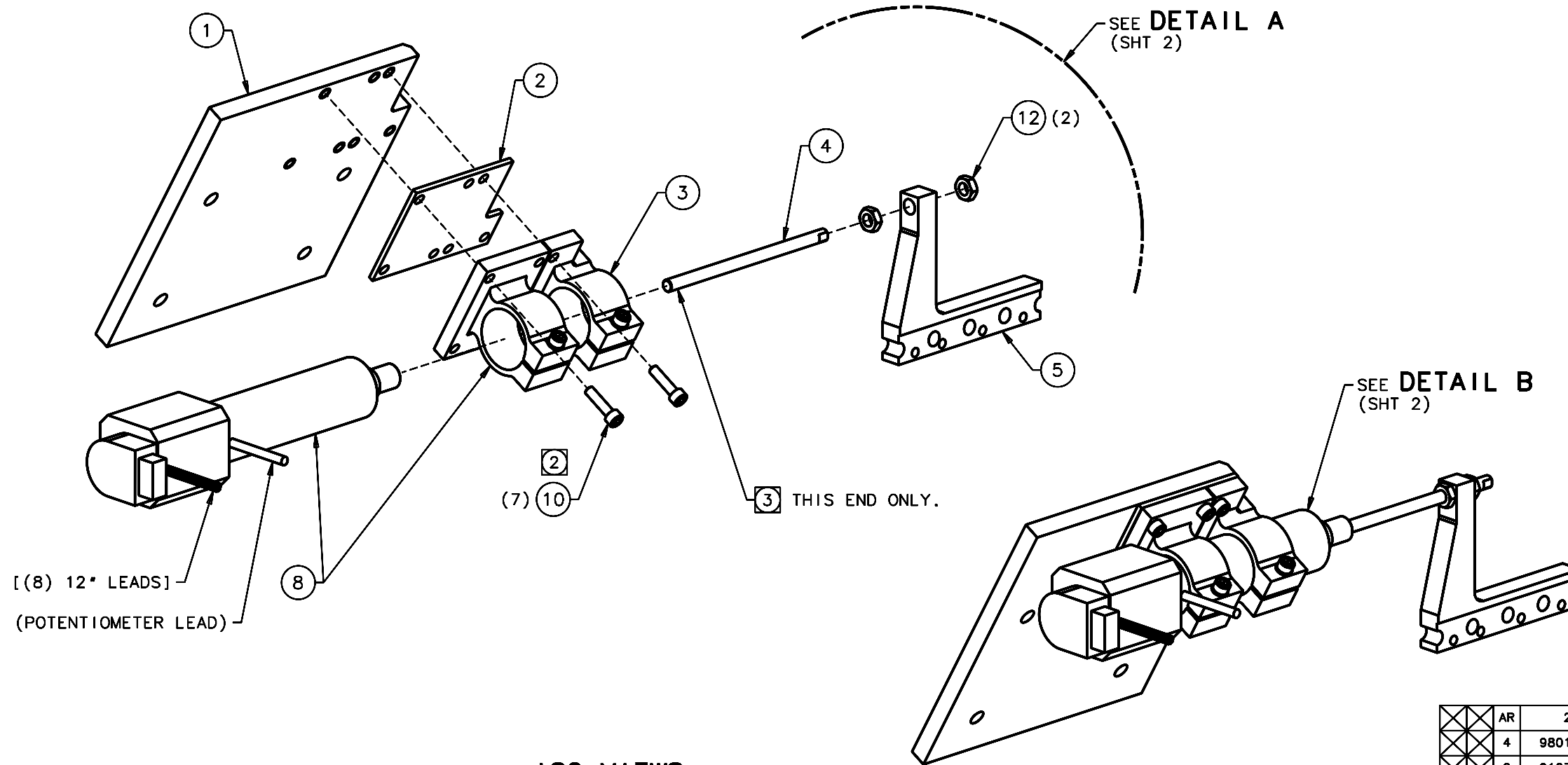


REVISIONS				
LTR	DESCRIPTION	DATE	REVISED BY	APPROVED
A	INITIAL RELEASE	6/13/05	R. NAGY	W. DAVISON



ISO VIEWS
SCALE NTS
ADDITIONAL ASSEMBLY VIEWS ON SHT 2

QTY PER ASSY	AR	222	THREADLOCKER	LOCTITE	14	
	4	98019A333	WASHER, FLAT, #10 x .500 OD x .036-.065, 18-8 SS	McMASTER-CARR	13	
	2	91078A205	NUT, HEX, THIN (JAM), .250-28 UNF x .15 H, CR 2 STL, Zn PLT	McMASTER-CARR	12	
					11	
	11	90128A945	SHCS, .190-32 UNF x .750 LG, STL, Zn-PLT	McMASTER-CARR	10	
	4	90128A197	SHCS, .164-32 UNF x .750 LG, STL, Zn-PLT	McMASTER-CARR	9	
	1	D-A.083AB-HT17E5-2-2NO-P-B/4	STEPPER MOTOR, NEMA 17, ANTI-BACKLASH, .0833*/REV, 2" STROKE	ULTRAMOTION	8	
					7	
					6	
	1	14847	DRIVE PLATE		5	
	1	14846	FOCUS MOTOR TO DRIVE PLATE ROD		4	
	1	14845	MODIFIED FOCUS MOTOR TUBE MOUNT		3	
	1	14844	FOCUS MOTOR TUBE MOUNT SPACER PLATE		2	
	1	14843	FOCUS MOTOR MOUNT		1	
-3	-2	-1	PART NUMBER	PART DESCRIPTION	MANUFACTURER or MAT'L SPEC	ITEM NO.

NOTES:

- 1 NOTED DIMENSIONS & ARE REF ONLY FOR INITIAL SETUP: THEY MAY CHANGE WITH ADJUSTMENTS AND/OR DISASSEMBLY AS REQUIRED AT NEXT ASSEMBLIES.
- 2 APPLY ITEM 14 LOCTITE 222 TO NOTED FASTENERS AS REQUIRED.
- 3 APPLY A COMPATIBLE ANTI-SEIZE COMPOUND IF REQUIRED.
4. QTY TO ASSEMBLY: 1

DO NOT SCALE DRAWING INTERPRET DIMENSIONS AND TOLERANCES IN ACCORDANCE WITH ASME Y14.5M-94		THIS DRAWING CREATED IN: ACAD <input type="checkbox"/> MECH <input type="checkbox"/> IDEAS <input checked="" type="checkbox"/>		Steward Observatory, University of Arizona 933 N. Cherry Avenue, Tucson, AZ 85721 (520)621-7659	
TOLERANCES UNLESS OTHERWISE SPECIFIED LINEAR .XX - NA .XXX - NA ANGULAR NA DIAMETRICAL SEE SPEC S-002		DESIGNED BY: D. DEAN	DATE: 1/27/05	CATEGORY: MMT	
MATERIAL -		DRAWN BY: R. NAGY	5/20/05	PROJECT: MAESTRO	
FINISH -		CHECKED BY: J. BRENNAN	6/8/05	TITLE: LENS CAN SUPPORT-LENS 1 STAGE FOCUS ASSEMBLY	
ASSEMBLY APPLICATION		APPROVED BY: J. BECHTOLD	6/13/05	PLOT SIZE SCALE: D -	
CURRENT TIME/DATE/FILE LOCATION:		APPROVED BY: R. WARNER	6/13/05	DRAWING NUMBER: 13432	
DRAWING ARCHIVE LOCATION: http://davinci.as.arizona.edu/ccad/default.html		APPROVED:		REVISION: A	