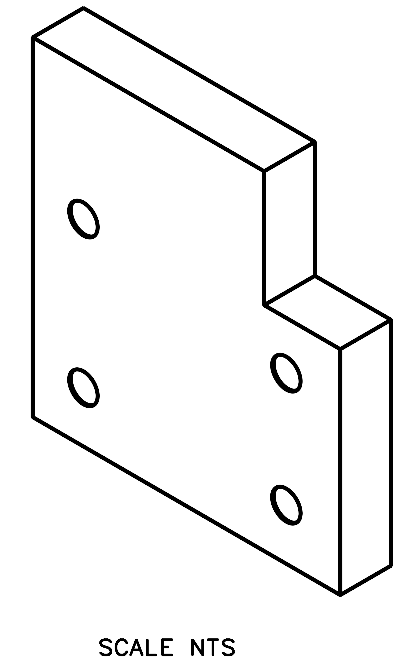
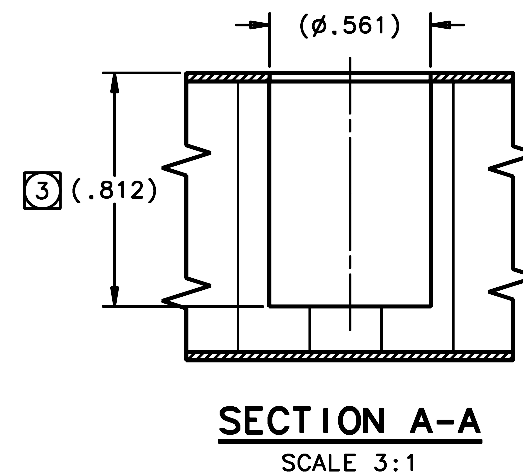
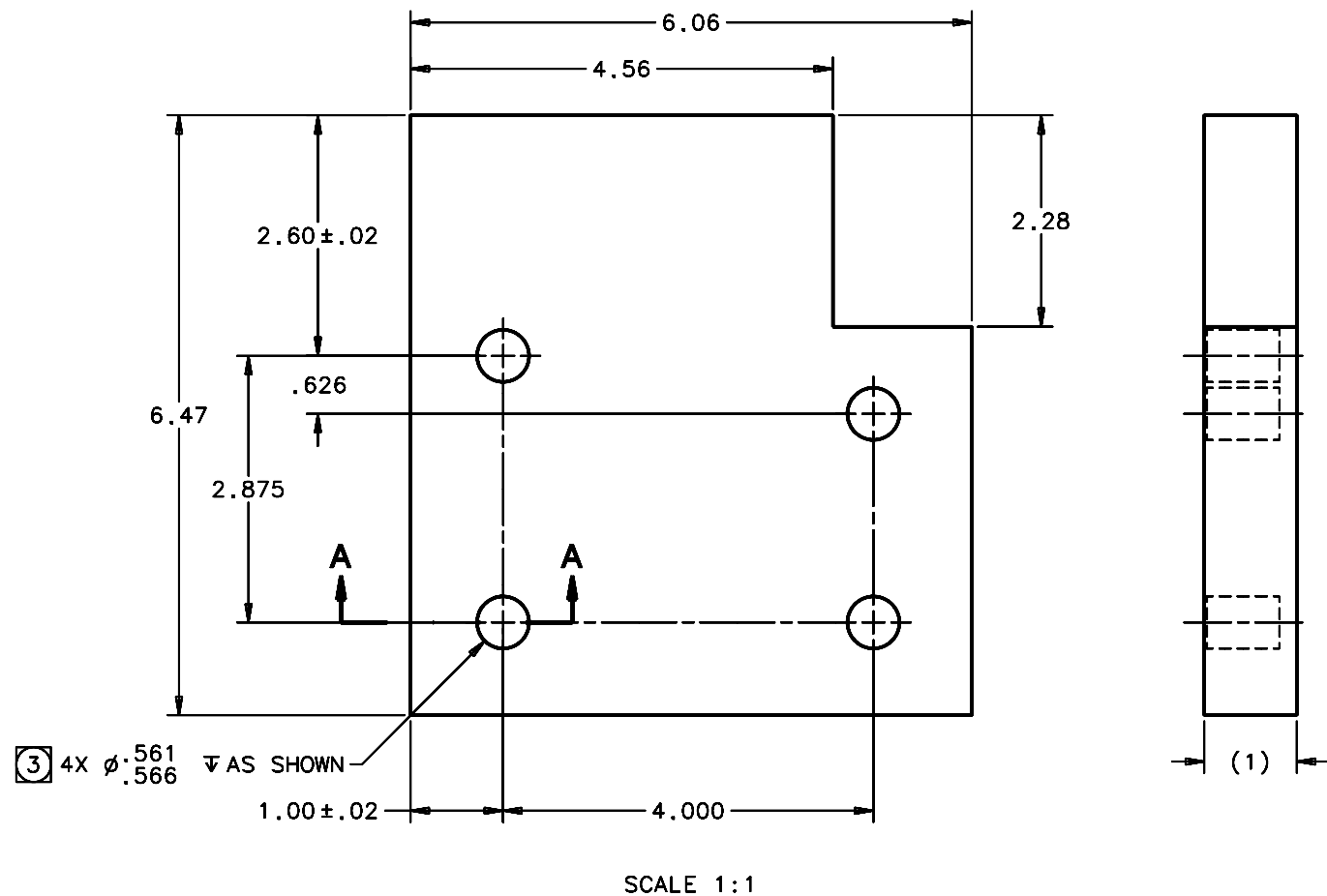


REVISIONS				
LTR	DESCRIPTION	DATE	REVISED BY	APPROVED
A	INITIAL RELEASE	3/7/06	R. NAGY	J. BECHTOLD
B	DRAWING LOG BOOK NUMBERING ERROR; WAS 16166	5/16/06	R. NAGY	R. WARNER



NOTES:

- 1 MATERIAL: MAKE FROM BLANK AS CUT FROM 13594 COMPOSITE PANEL PART LAYOUT.
  2. BREAK SHARP EDGES & DEBURR HOLES.
  - 3 NOTED HOLE IS FOR A NAS1832-3N6 MOLDED-IN INSERT AS SPECIFIED PER NEXT ASSEMBLY. ALSO SEE DOCUMENT NO. SP14038 FOR ADDITIONAL HOLE PREPARATION DATA.
3. QTY REQUIRED: 1

DO NOT SCALE DRAWING		THIS DRAWING CREATED IN:		Steward Observatory, University of Arizona	
INTERPRET DIMENSIONS AND TOLERANCES IN ACCORDANCE WITH ASME Y14.5M-94		ACAD <input type="checkbox"/>	MECH <input type="checkbox"/>	IDEAS <input checked="" type="checkbox"/>	933 N. Cherry Avenue, Tucson, AZ 85721 (520)621-7659
TOLERANCES UNLESS OTHERWISE SPECIFIED		DESIGNED BY: D. DEAN/R. NAGY	DATE: 3/17/05	CATEGORY: MMT	
LINEAR .XX = ±.03		DRAWN BY: R. NAGY	6/10/05	PROJECT: MAESTRO	
ANGULAR .XXX = ±.010		CHECKED BY: W. DAVISON	2/28/06	TITLE: LENS CAN SUPPORT-LENS 1 SIDE FOCUS MOTOR MOUNT PANEL (W/O INSERTS)	
DIAMETRICAL SEE SPEC S-002		APPROVED: J. BECHTOLD	3/7/06	PLOT SIZE SCALE: D -	
MATERIAL 1		APPROVED:		DRAWING NUMBER: 17087	
FINISH NONE		ASSEMBLY APPLICATION	CURRENT TIME/DATE/FILE LOCATION:	REVISION: B	
			DRAWING ARCHIVE LOCATION: <a href="http://davincl.as.arizona.edu/ccad/default.html">http://davincl.as.arizona.edu/ccad/default.html</a>	SHEET 1 OF 1	