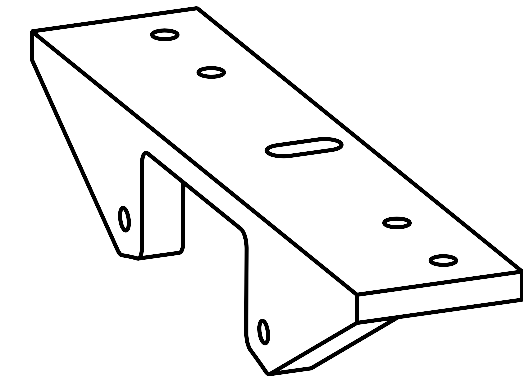
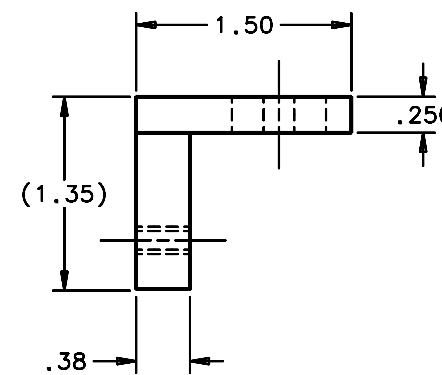
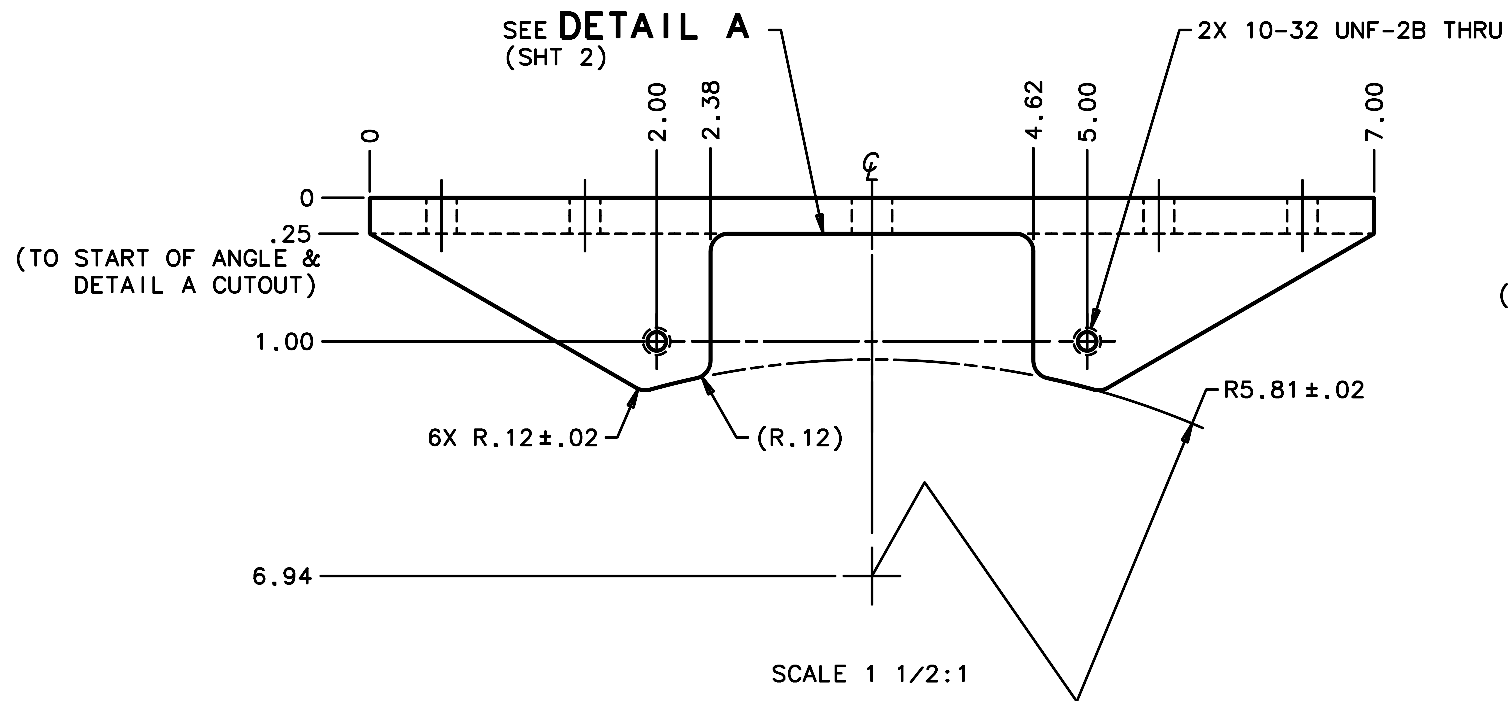
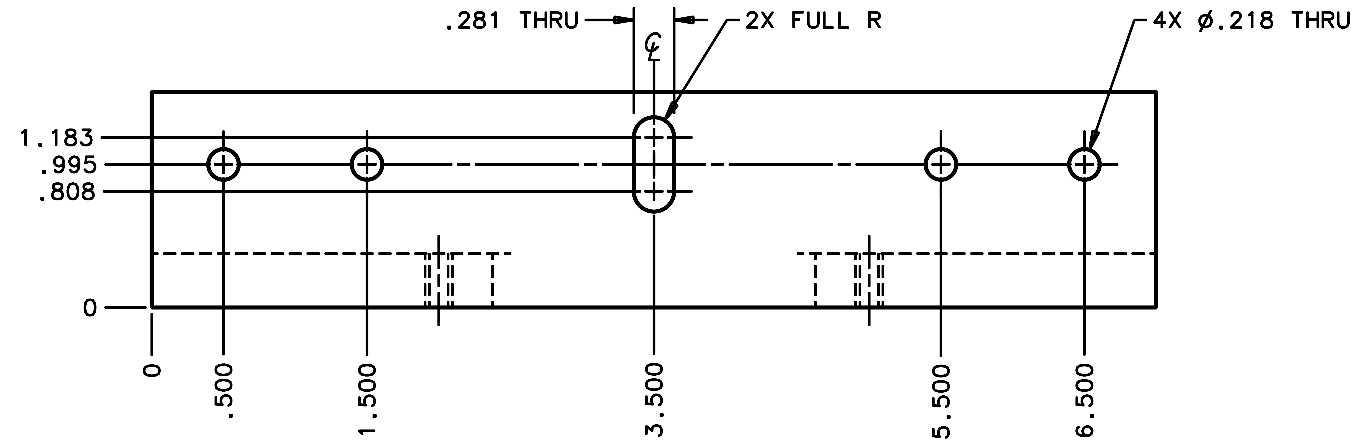


REVISIONS				
LTR	DESCRIPTION	DATE	REVISED BY	APPROVED
A	INITIAL RELEASE	3/10/06	R. NAGY	J. BECHTOLD
B	DRAWING LOG BOOK NUMBERING SEQUENCE ERROR; WAS 16155	4/15/06	R. NAGY	R. WARNER



SCALE NTS

NOTES:

- 1 FABRICATE TO SIZE & SHAPE SHOWN USING:
 - A. BAR STOCK -OR-
 - B. STRUCTURAL STEEL ANGLE
2. BREAK SHARP EDGES & DEBURR.
3. MACHINED SURFACE FINISH TO BE 125 RMS OR BETTER.
4. MACHINED FILLETS TO BE R.03 MAX.
- 5 ZINC CHROMATE PER ASTM-B-633-98, TYPE II, GOLD.
6. DIMENSIONS ARE PRIOR TO ZINC CHROMATE.
7. QTY REQD: 3.

DO NOT SCALE DRAWING	THIS DRAWING CREATED IN:			Steward Observatory, University of Arizona			
INTERPRET DIMENSIONS AND TOLERANCES IN ACCORDANCE WITH ASME Y14.5M-94	ACAD	MECH	IDEAS	933 N. Cherry Avenue, Tucson, AZ 85721 (520)621-7659			
TOLERANCES UNLESS OTHERWISE SPECIFIED	<input type="checkbox"/>	<input type="checkbox"/>	<input checked="" type="checkbox"/>	DESIGNED BY:	DATE:	CATEGORY:	
LINEAR				D. DEAN	11/3/05	MMT	
ANGULAR				DRAWN BY:		PROJECT:	MAESTRO
.1 = .02				R. NAGY	1/13/06	TITLE:	LENS CAN SUPPORT
.XX = .010				CHECKED BY:			LENS CAN 6 SIDE
.XXX = .010				W. DAVISON	3/10/06		ADJUSTMENT BRACKET
DIAMETRICAL SEE SPEC S-002				APPROVED:			
				J. BECHTOLD	3/10/06		
				APPROVED:			
MATERIAL	13424	MMT-MAESTRO		APPROVED:		PLOT SIZE SCALE:	DRAWING NUMBER:
1006/1018 STL 1						D -	17078
FINISH 5				APPROVED:			REVISION:
							B
				ASSEMBLY APPLICATION	CURRENT TIME/DATE/FILE LOCATION:		SHEET 1 OF 2
					DRAWING ARCHIVE LOCATION: http://davinci.as.arizona.edu/ccad/default.html		