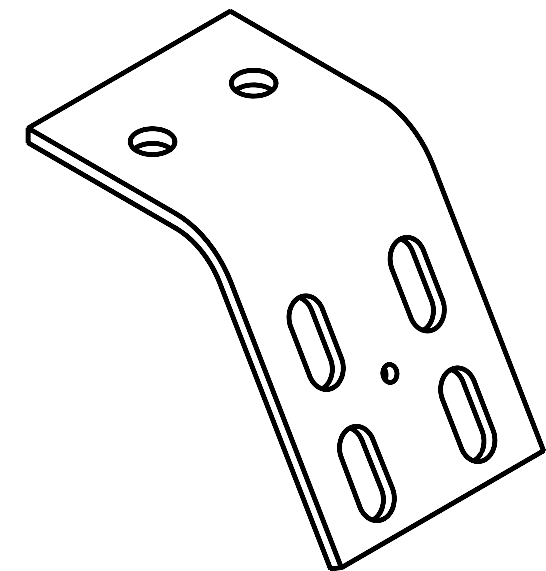
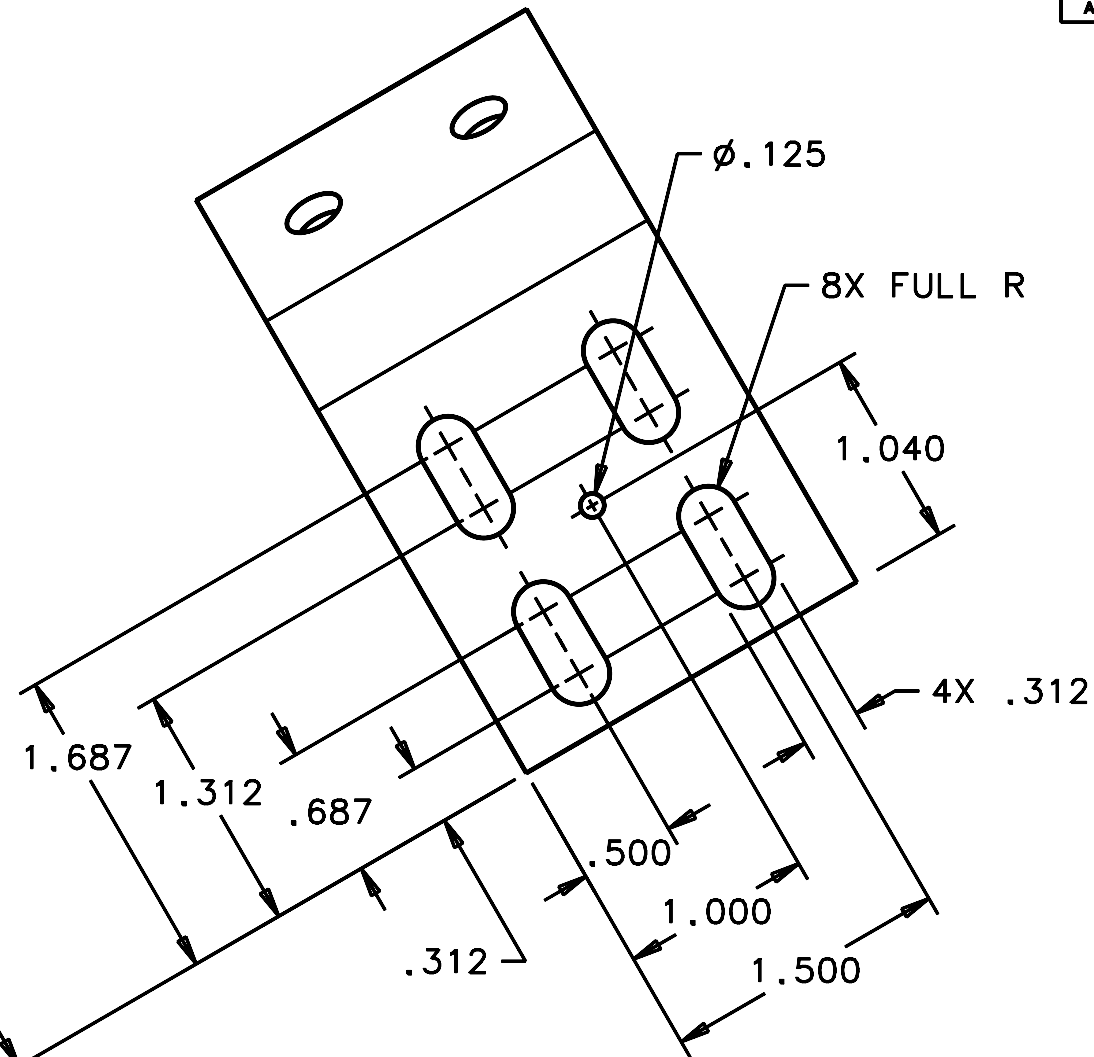
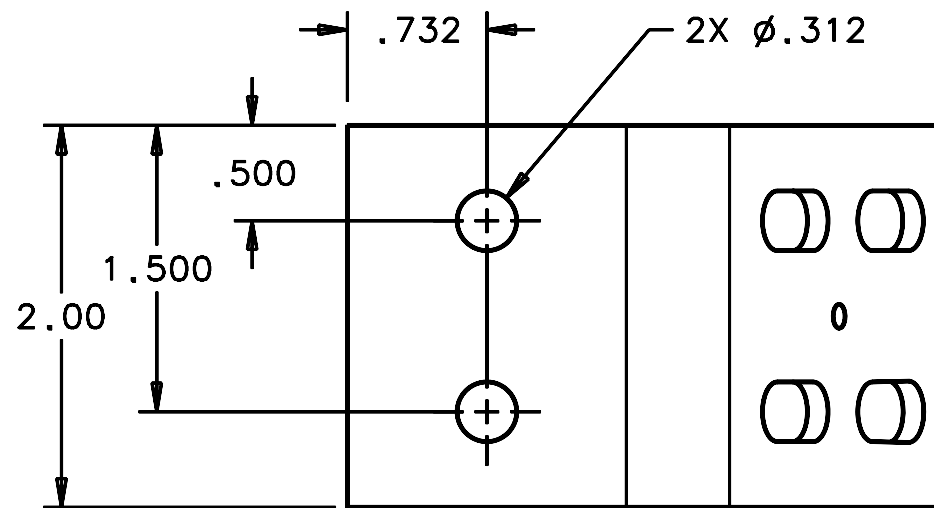
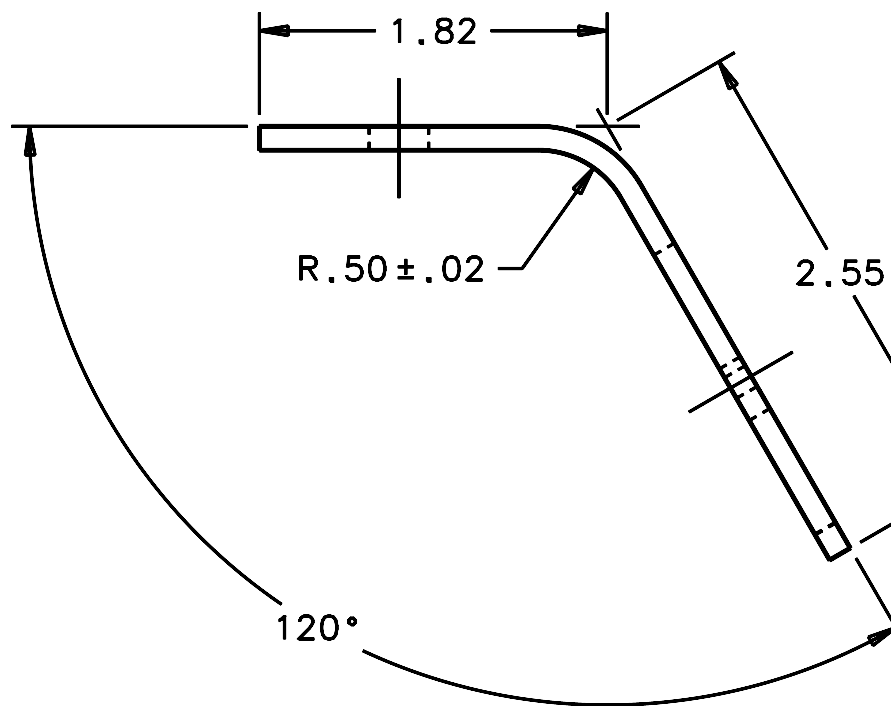


REVISIONS				
LTR	DESCRIPTION	DATE	REVISED BY	APPROVED
A	INITIAL RELEASE	3/7/06	R. NAGY	J. BECHTOLD



SCALE NTS



SCALE 1:1

NOTES:

1. BREAK SHARP EDGES & DEBURR.
2. MACHINED SURFACE FINISH TO BE 125 RMS OR BETTER.
3. ZINC CHROMATE PER ASTM-B-633-98, TYPE II, GOLD.
4. DIMENSIONS ARE PRIOR TO ZINC CHROMATE.
5. QTY REQD: 24.

DO NOT SCALE DRAWING INTERPRET DIMENSIONS AND TOLERANCES IN ACCORDANCE WITH ASME Y14.5M-94		THIS DRAWING CREATED IN: ACAD <input type="checkbox"/> MECH <input type="checkbox"/> IDEAS <input checked="" type="checkbox"/>		Steward Observatory, University of Arizona 933 N. Cherry Avenue, Tucson, AZ 85721 (520)621-7659					
TOLERANCES UNLESS OTHERWISE SPECIFIED LINEAR ANGULAR .X - NA .XX - 2.03 .XXX - 2.010 DIAMETRICAL SEE SPEC S-002				DESIGNED BY: D. DEAN	DATE: 1/20/06	CATEGORY: MMT			
				DRAWN BY: R. NAGY	1/21/06	PROJECT: MAESTRO			
				CHECKED BY: W. DAVISON	2/28/06	TITLE: LENS CAN SUPPORT LENS CAN MOUNT SIDE STRINGER			
				APPROVED: J. BECHTOLD	3/7/06				
MATERIAL 1006/1018 STL, 11 GA (.1196)		13424	MMT-MAESTRO	APPROVED:		PLOT SIZE B	SCALE: -	DRAWING NUMBER: 16164	REVISION: A
FINISH 3		NEXT ASSY USED ON		CURRENT TIME/DATE/FILE LOCATION:				SHEET 1 OF 1	
		ASSEMBLY APPLICATION		DRAWING ARCHIVE LOCATION: http://devinci.es.arizona.edu/ocod/default.html					