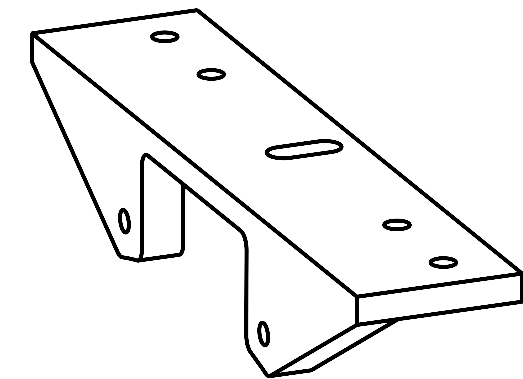
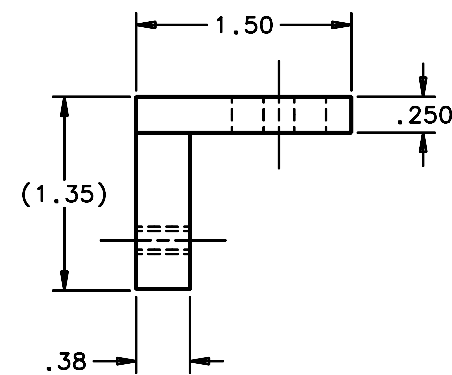
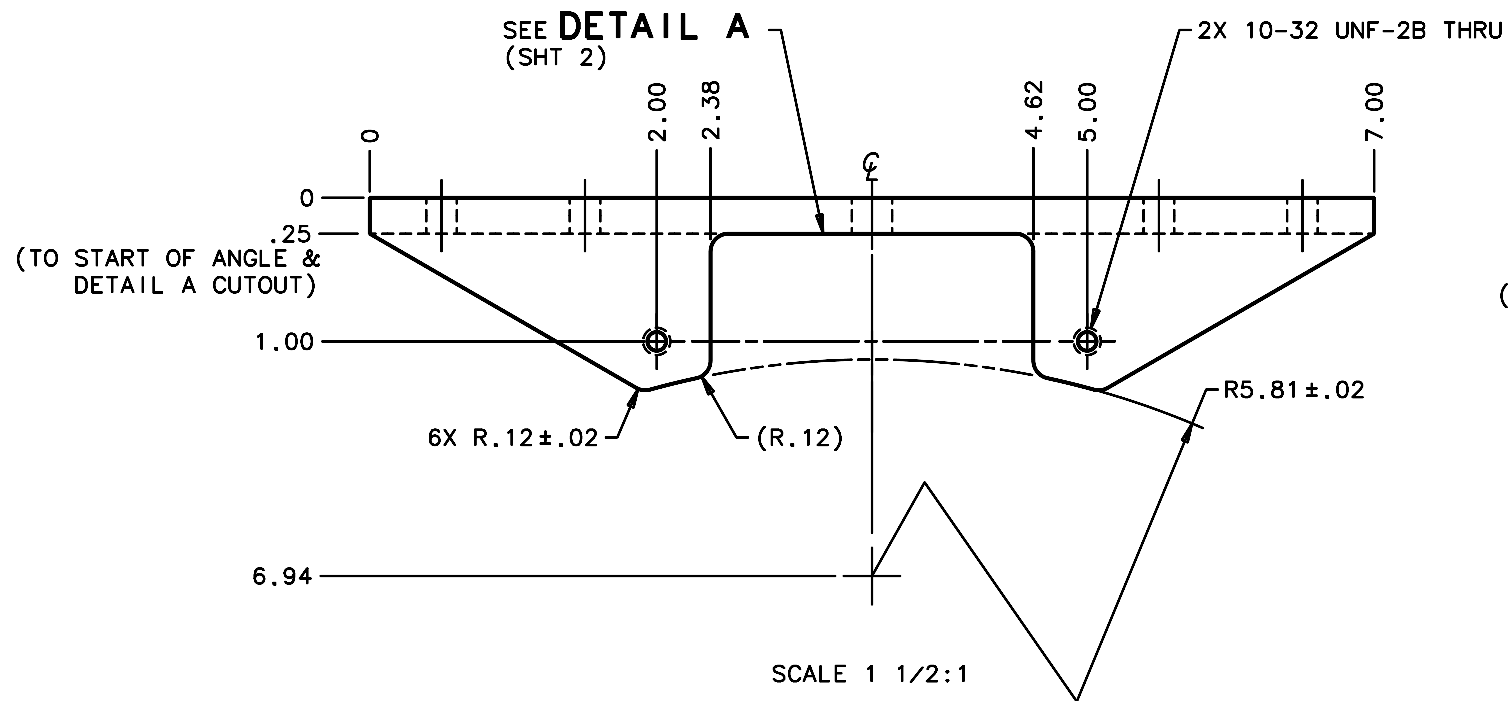
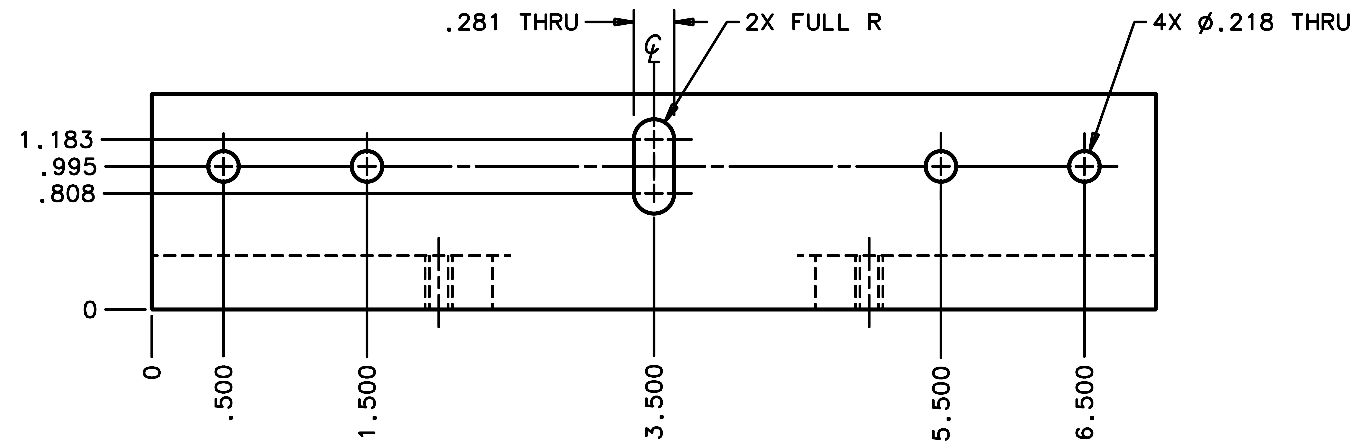


| REVISIONS | | | | |
|-----------|-----------------|---------|------------|-------------|
| LTR | DESCRIPTION | DATE | REVISED BY | APPROVED |
| A | INITIAL RELEASE | 3/10/06 | R. NAGY | J. BECHTOLD |



SCALE NTS

NOTES:

- 1 FABRICATE TO SIZE & SHAPE SHOWN USING:
 - A. BAR STOCK -OR-
 - B. STRUCTURAL STEEL ANGLE
2. BREAK SHARP EDGES & DEBURR.
3. MACHINED SURFACE FINISH TO BE 125 RMS OR BETTER.
4. MACHINED FILLETS TO BE R.03 MAX.
- 5 ZINC CHROMATE PER ASTM-B-633-98, TYPE II, GOLD.
6. DIMENSIONS ARE PRIOR TO ZINC CHROMATE.
7. QTY REQD: 3.

| | | | | | |
|---|--|---|-------------------------------|--|--|
| DO NOT SCALE DRAWING | | THIS DRAWING CREATED IN: | | Steward Observatory, University of Arizona | |
| INTERPRET DIMENSIONS AND TOLERANCES IN ACCORDANCE WITH ASME Y14.5M-94 | | ACAD <input type="checkbox"/> | MECH <input type="checkbox"/> | IDEAS <input checked="" type="checkbox"/> | 933 N. Cherry Avenue, Tucson, AZ 85721 (520)621-7659 |
| TOLERANCES UNLESS OTHERWISE SPECIFIED | | DESIGNED BY: D. DEAN | | DATE: 11/3/05 | CATEGORY: MMT |
| LINEAR .XX = ±.02 | | DRAWN BY: R. NAGY | | 1/13/06 | PROJECT: MAESTRO |
| ANGULAR .XXX = ±.010 | | CHECKED BY: W. DAVISON | | 3/10/06 | TITLE: LENS CAN SUPPORT LENS CAN 6 SIDE ADJUSTMENT BRACKET |
| DIAMETRICAL SEE SPEC S-002 | | APPROVED: J. BECHTOLD | | 3/10/06 | |
| MATERIAL 1006/1018 STL 1 | | 13424 | MMT-MAESTRO | APPROVED: | PLOT SIZE SCALE: D - |
| FINISH 5 | | NEXT ASSY | USED ON | APPROVED: | DRAWING NUMBER: 16155 |
| ASSEMBLY APPLICATION | | CURRENT TIME/DATE/FILE LOCATION: | | | REVISION: A |
| | | DRAWING ARCHIVE LOCATION: http://davincl.as.arizona.edu/ccad/default.html | | | SHEET 1 OF 2 |