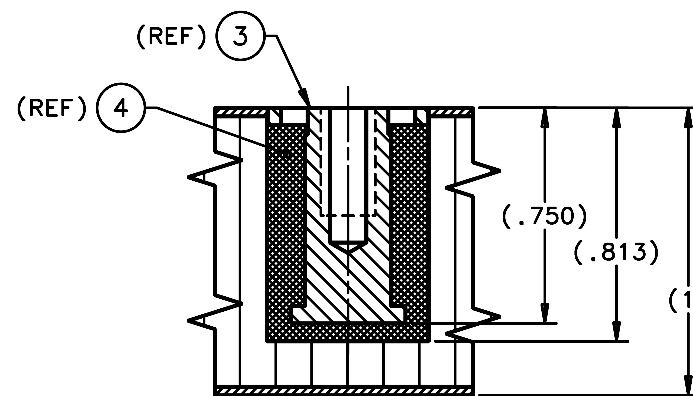
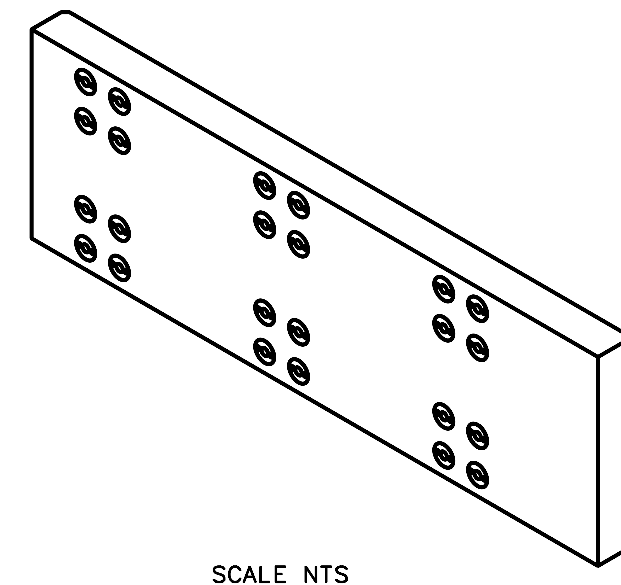
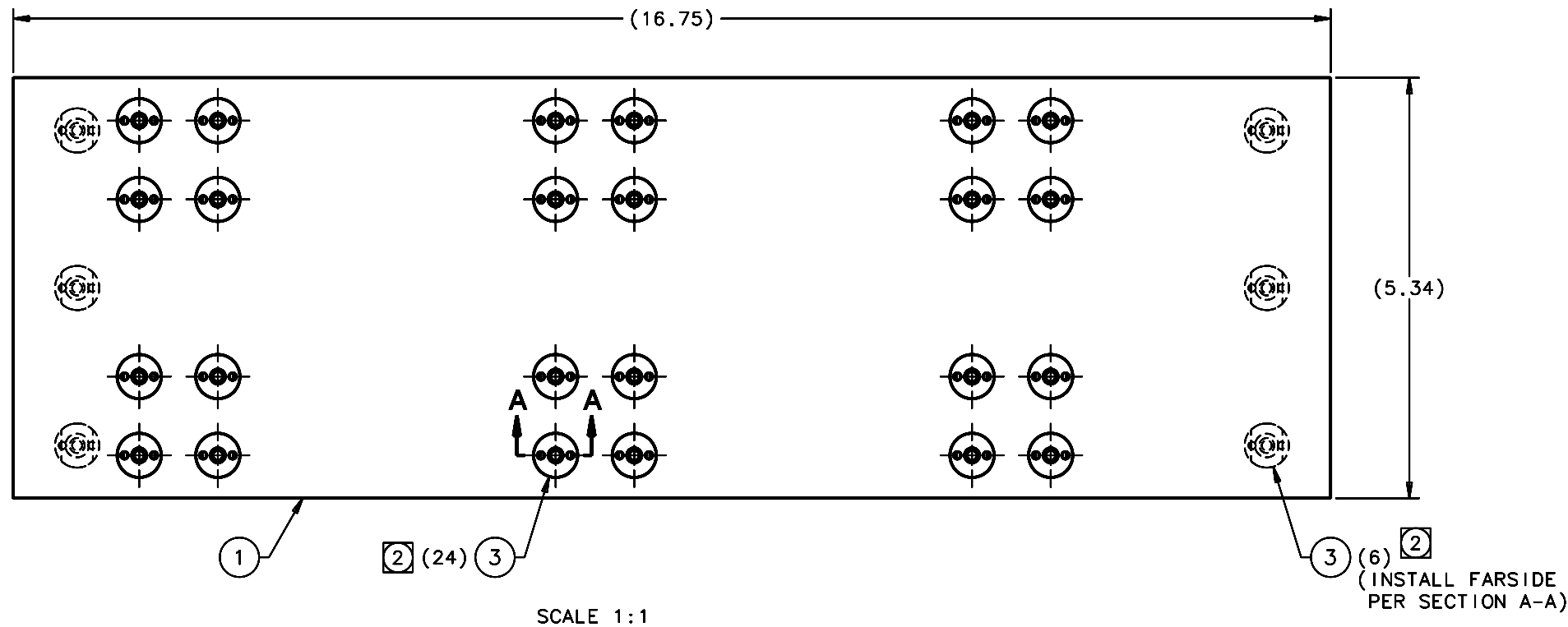


REVISIONS				
LTR	DESCRIPTION	DATE	REVISED BY	APPROVED
A	INITIAL RELEASE	3/10/06	R. NAGY	J. BECHTOLD



(30X) SECTION A-A
SCALE 3:1

NOTES:

- REQUIRED DOCUMENTS:
 - SP14038 INSERT SPECIFICATION/INSTALLATION FOR MAESTRO COMPOSITE PANEL.
- POT INSERTS IN PLACE USING ITEM 4 ADHESIVE.
- INSERTS INCLUDE AN ADHESIVE-BACKED NAS1837 INSTALLATION TAB.
- QTY REQD: 3.

QTY PER ASSY	-3	-2	-1	PART NUMBER	PART DESCRIPTION	MANUFACTURER or MAT'L SPEC	ITEM NO.
				AR 8280	INDUSTRO-WELD [2-PART COLD WELD COMPOUND (STEEL/EPOXY RESIN)]	J-B WELD CO.	4
				30 NAS1832-3N6	INSERT, MOLDED IN, BLIND THD, NON-LOCK, .190-32 x .750 LG, STL, CAD PLT	OR EQUIVALENT	3
							2
				1 14860	TEE INNER FLANGE PANEL		1

(3)

DO NOT SCALE DRAWING		THIS DRAWING CREATED IN:		LIST OF MATERIALS			
INTERPRET DIMENSIONS AND TOLERANCES IN ACCORDANCE WITH ASME Y14.5M-94	ACAD	MECH	IDEAS	Steward Observatory, University of Arizona 933 N. Cherry Avenue, Tucson, AZ 85721 (520)621-7659			
TOLERANCES UNLESS OTHERWISE SPECIFIED LINEAR .XX - NA .XXX - NA ANGULAR NA DIAMETRICAL SEE SPEC S-002	<input type="checkbox"/>	<input type="checkbox"/>	<input checked="" type="checkbox"/>	DESIGNED BY: D. DEAN/R. NAGY	DATE: 1/23/06	CATEGORY: MMT	
				DRAWN BY: R. NAGY	DATE: 1/23/06	PROJECT: MAESTRO	
				CHECKED BY: W. DAVISON	DATE: 3/10/06	TITLE: LENS CAN SUPPORT LENS 2 TO 6 SIDE TEE INNER FLANGE (W/INSERTS)	
				APPROVED: J. BECHTOLD	DATE: 3/10/06	PLOT SIZE SCALE: D -	
MATERIAL	14852	MMT-MAESTRO		APPROVED:		DRAWING NUMBER: 14853	REVISION: A
FINISH				APPROVED:			
	NEXT ASSY	USED ON		CURRENT TIME/DATE/FILE LOCATION: DRAWING ARCHIVE LOCATION: http://davincl.as.arizona.edu/ccad/default.html			