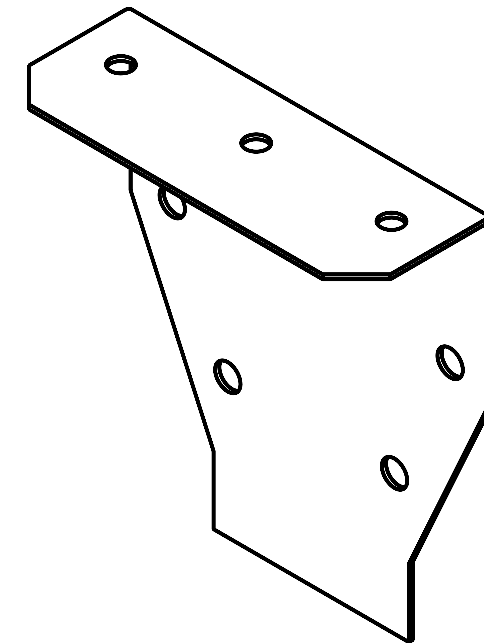
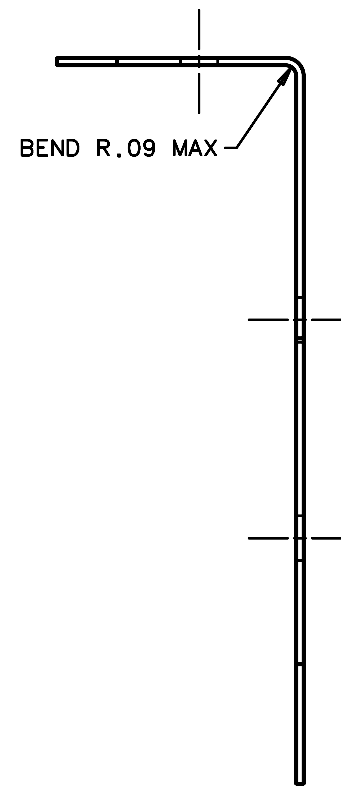
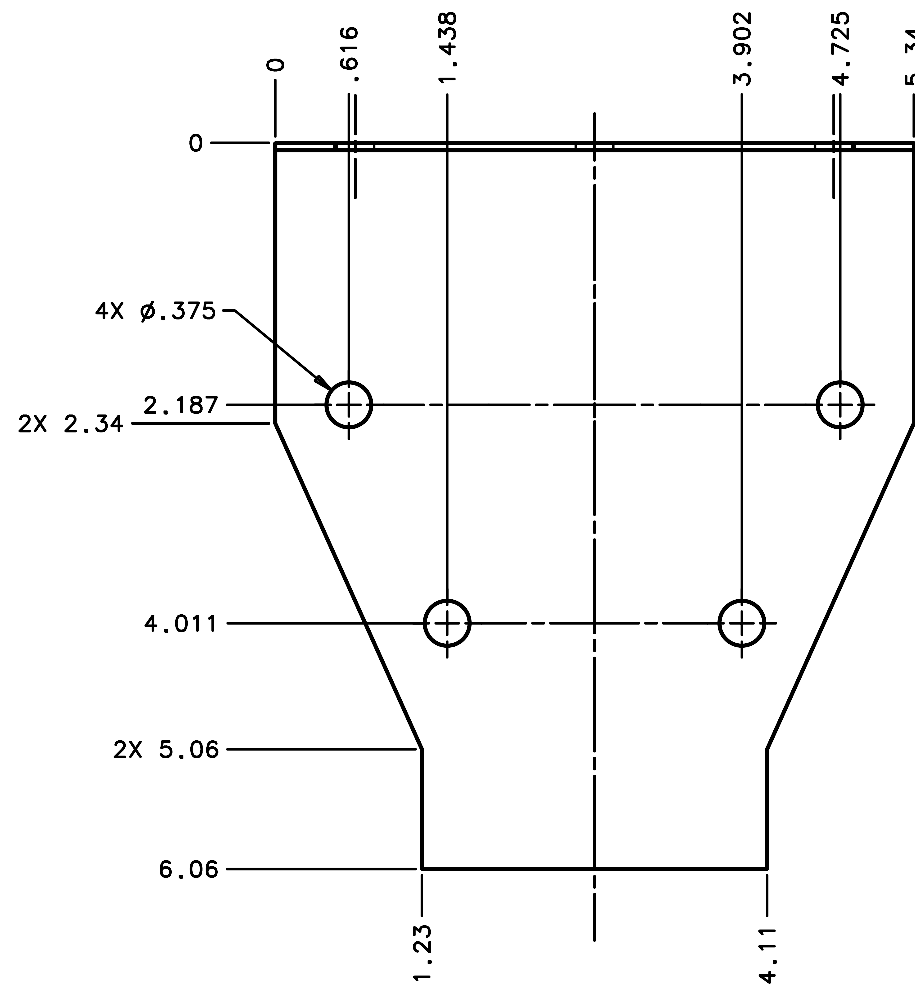
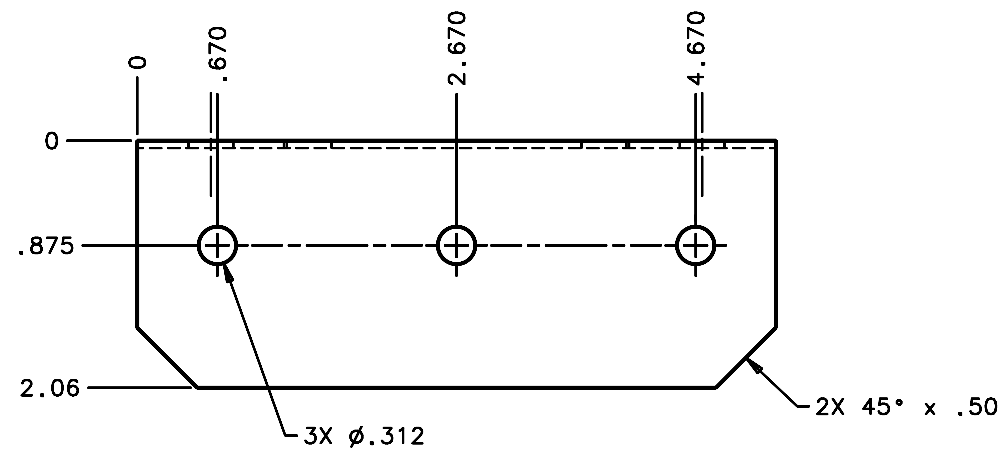


REVISIONS				
LTR	DESCRIPTION	DATE	REVISED BY	APPROVED
A	INITIAL RELEASE	3/10/06	R. NAGY	J. BECHTOLD



SCALE NTS

SCALE 1 1/4:1

NOTES:

- BREAK SHARP EDGES & DEBURR HOLES.
- ZINC CHROMATE PER ASTM-B-633-98, TYPE II, GOLD.
- DIMENSIONS ARE PRIOR TO ZINC CHROMATE.
- QTY REQD: 11.

SAME AS 16180 EXCEPT W/O NOTCH

DO NOT SCALE DRAWING INTERPRET DIMENSIONS AND TOLERANCES IN ACCORDANCE WITH ASME Y14.5M-94	THIS DRAWING CREATED IN:			Steward Observatory, University of Arizona 933 N. Cherry Avenue, Tucson, AZ 85721 (520)621-7659		
	ACAD <input type="checkbox"/>	MECH <input type="checkbox"/>	IDEAS <input checked="" type="checkbox"/>	DESIGNED BY: D. DEAN	DATE: 9/27/04	CATEGORY: MMT
TOLERANCES UNLESS OTHERWISE SPECIFIED LINEAR ANGULAR .X = NA ± 1° .XX = ±.03 .XXX = ±.010 DIAMETRICAL SEE SPEC S-002	14858	MMT-MAESTRO	14855	MMT-MAESTRO	14852	MMT-MAESTRO
	NEXT ASSY USED ON			APPROVED:	APPROVED:	APPROVED:
MATERIAL 1006/1018 STL, 16 GA (.0598)	FINISH <input checked="" type="checkbox"/>			CURRENT TIME/DATE/FILE LOCATION:		DRAWING NUMBER: 13451
ASSEMBLY APPLICATION				DRAWING ARCHIVE LOCATION: http://dovinc1.es.arizona.edu/ccad/default.html		REVISION: A