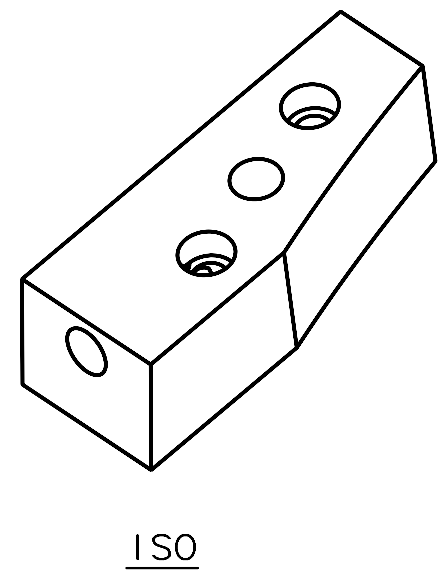
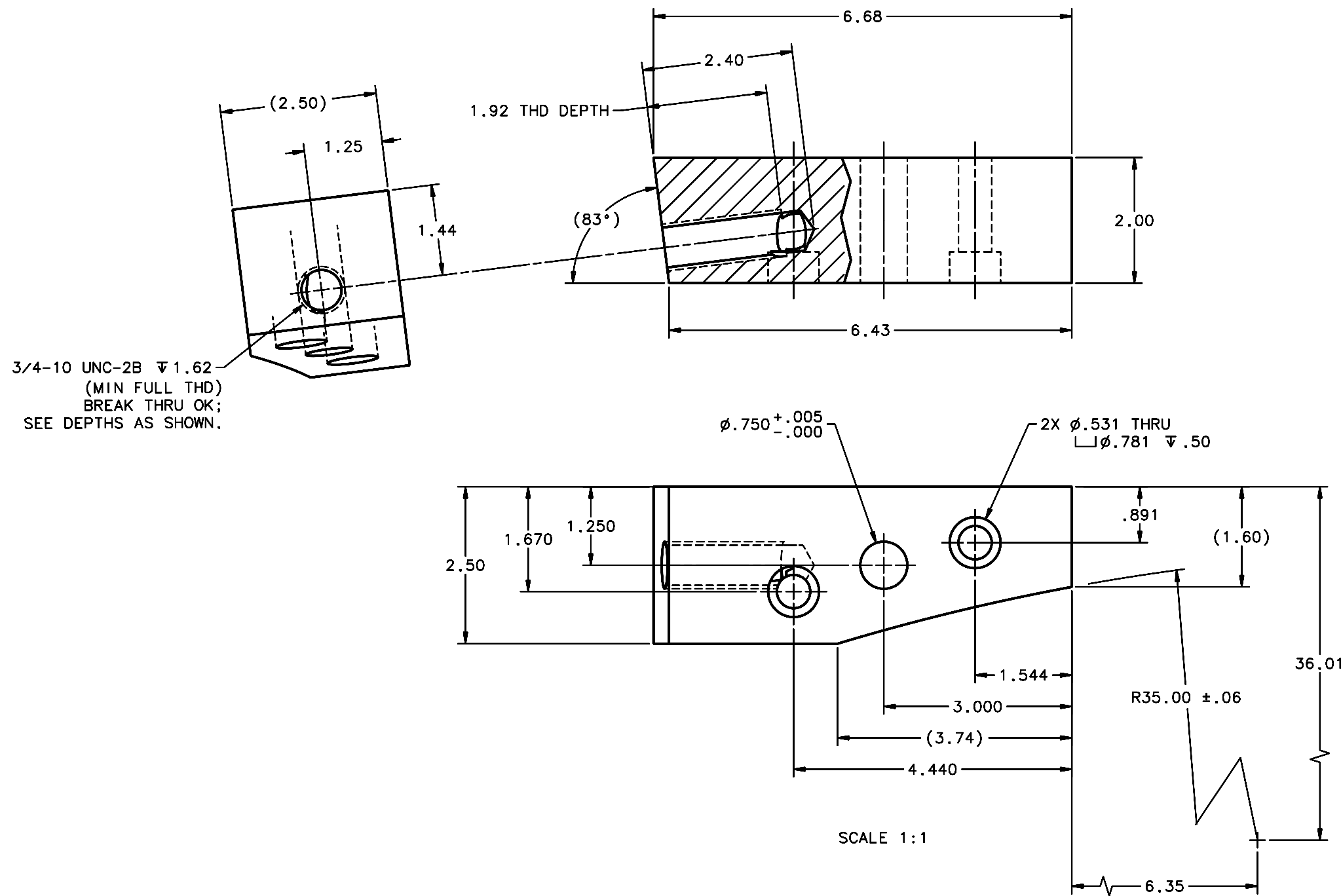


REVISIONS				
LTR	DESCRIPTION	DATE	REVISED BY	APPROVED
A	INITIAL RELEASE	11/17/05	R. NAGY	J. BECHTOLD



- NOTES:
- BREAK SHARP EDGES & DEBURR.
  - MACHINED SURFACE FINISH TO BE 125 RMS OR BETTER.
  - MACHINED FILLETS TO BE R.015 MAX.
  - ANODIZE PER MIL-A-8625, TYPE II, CLASS 2, BLACK.
  - DIMENSIONS ARE BEFORE ANODIZE.
  - QTY REQD: 1.

OPPOSITE HAND OF 16086

DO NOT SCALE DRAWING INTERPRET DIMENSIONS AND TOLERANCES IN ACCORDANCE WITH ASME Y14.5M-94		THIS DRAWING CREATED IN: ACAD <input type="checkbox"/> MECH <input type="checkbox"/> IDEAS <input checked="" type="checkbox"/>		Steward Observatory, University of Arizona 933 N. Cherry Avenue, Tucson, AZ 85721 (520)621-7659	
TOLERANCES UNLESS OTHERWISE SPECIFIED LINEAR .XX = ±.02 .XXX = ±.008 ANGULAR ±1° DIAMETRICAL SEE SPEC S-002		DESIGNED BY: D. DEAN	DATE: 06/15/05	CATEGORY: MMT	
MATERIAL 6061-T6 Al		DRAWN BY: D. DEAN	10/17/05	PROJECT: MAESTRO	
FINISH 4		CHECKED BY: R. NAGY	11/14/05	TITLE: TRUSS SPACE FRAME TO WELDMENT REAR BRACE BLOCK TYPE 2 LH	
ASSEMBLY APPLICATION		APPROVED: J. BECHTOLD	11/17/05	DRAWING NUMBER: 16085	
CURRENT TIME/DATE/FILE LOCATION:		DRAWING ARCHIVE LOCATION: <a href="http://dovinci.as.arizona.edu/ccad/default.html">http://dovinci.as.arizona.edu/ccad/default.html</a>		SHEET 1 OF 1	