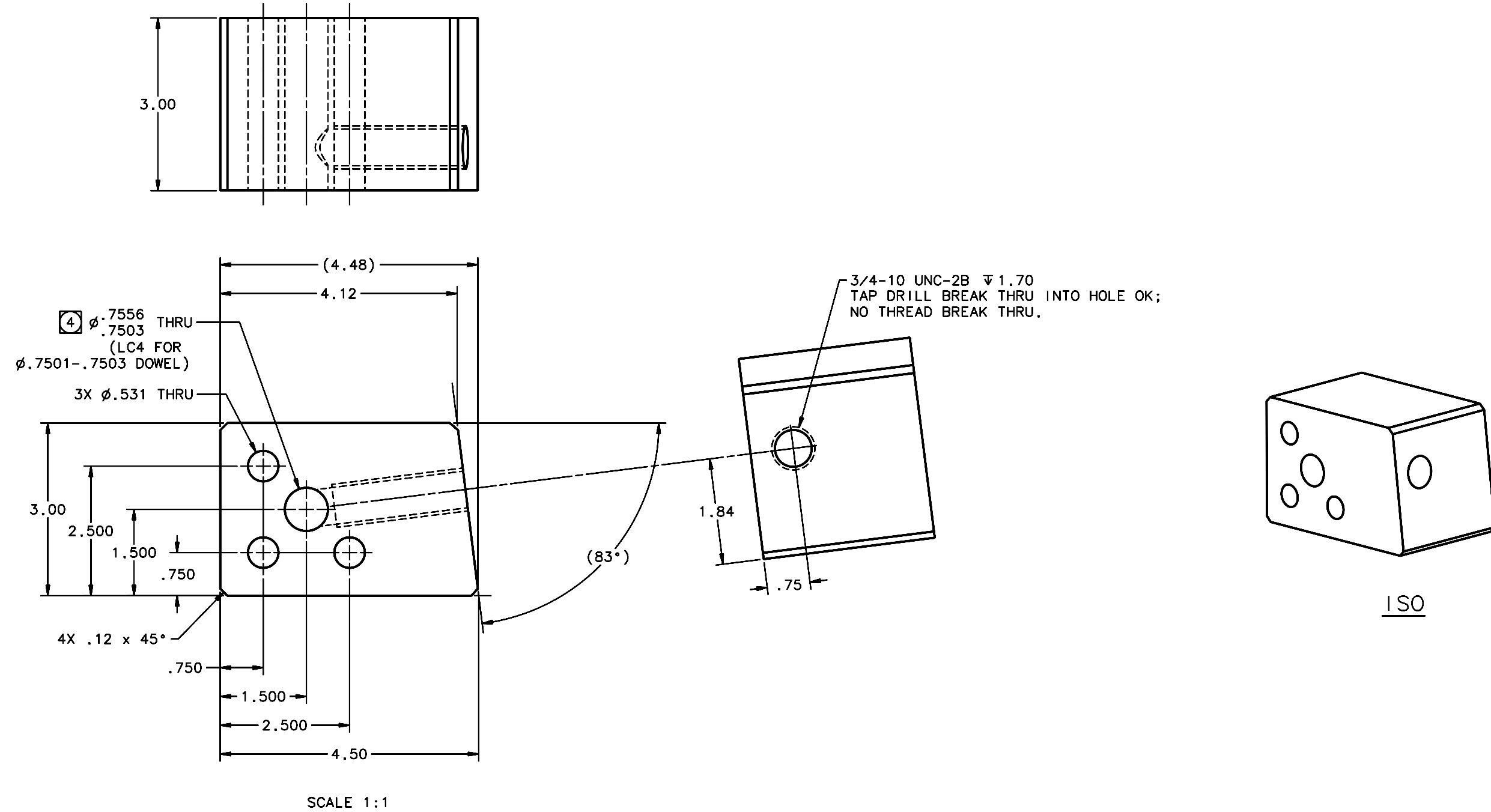


REVISIONS				
LTR	DESCRIPTION	DATE	REVISED BY	APPROVED
A	INITIAL RELEASE	11/17/05	R. NAGY	J. BECHTOLD



NOTES:

- BREAK SHARP EDGES & DEBURR.
- MACHINED SURFACE FINISH TO BE 125 RMS OR BETTER.
- ANODIZE PER MIL-A-8625, TYPE II, CLASS 2, BLACK.
- NOTED HOLE SIZE IS AFTER ANODIZE;
ALL OTHER DIMENSIONS ARE BEFORE.
- QTY REQD: 1.

OPPOSITE HAND OF 16084

DO NOT SCALE DRAWING		THIS DRAWING CREATED IN:		Steward Observatory, University of Arizona	
INTERPRET DIMENSIONS AND TOLERANCES IN ACCORDANCE WITH ASME Y14.5M-94		ACAD <input type="checkbox"/>	MECH <input type="checkbox"/>	IDEAS <input checked="" type="checkbox"/>	933 N. Cherry Avenue, Tucson, AZ 85721 (520)621-7659
TOLERANCES UNLESS OTHERWISE SPECIFIED		DESIGNED BY: D. DEAN		DATE: 08/16/05	CATEGORY: MMT
LINEAR		DRAWN BY: D. DEAN		10/19/05	PROJECT: MAESTRO
ANGULAR		CHECKED BY: R. NAGY		11/14/05	TITLE: TRUSS SPACE FRAME TO WELDEMENT REAR BRACE BLOCK TYPE 1 LH
.1 = .001		APPROVED: J. BECHTOLD		11/17/05	
.05 = .002		APPROVED:			
.02 = .001		APPROVED:			
DIAMETRICAL SEE SPEC S-002		APPROVED:			
MATERIAL 6061-T6 Al		16070	MMT-MAESTRO	APPROVED:	
FINISH ③		NEXT ASSY	USED ON	APPROVED:	
ASSEMBLY APPLICATION		CURRENT TIME/DATE/FILE LOCATION:		PLOT SIZE SCALE: D -	DRAWING NUMBER: 16083
DRAWING ARCHIVE LOCATION: http://dovinci.as.arizona.edu/ccad/default.html		REVISION: A		SHEET 1 OF 1	