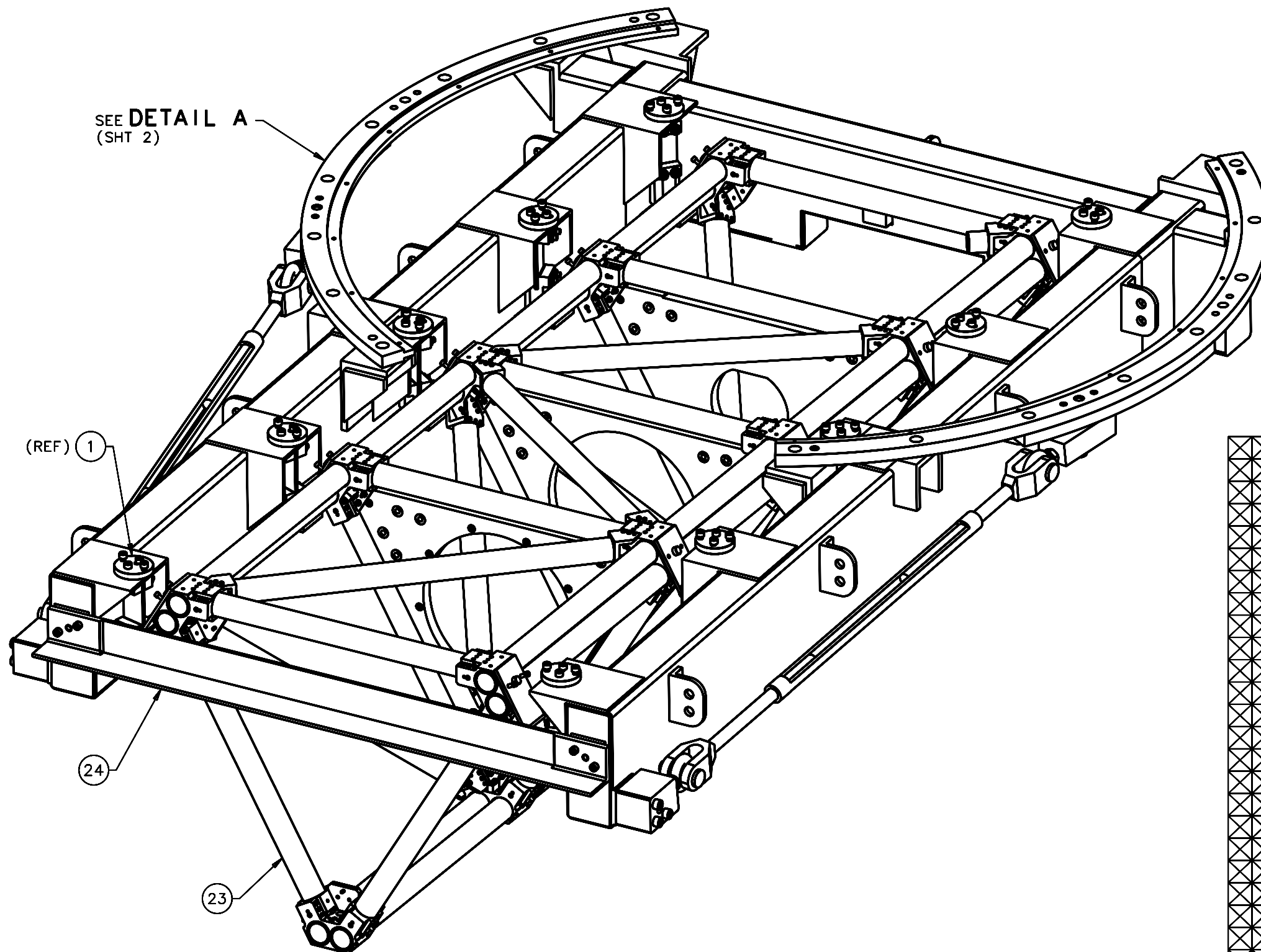


REVISIONS				
LTR	DESCRIPTION	DATE	REVISED BY	APPROVED
A	INITIAL RELEASE	1/6/06	R. NAGY	J. BECHTOLD



ISO VIEW

SCALE NTS

SEE SHTS 2 THRU 4 FOR ADDITIONAL ASSEMBLY VIEWS

NOTES:

- INSTALL THREE (3) ITEM 15 GUIDE PINS IN TELESCOPE DEROTATOR RING FOR ALIGNMENT OF THIS ASSEMBLY IN POSITIONS SHOWN (DETAL A, SHT 2).
AFTER ALIGNMENT, REMOVE GUIDE GUIDE PINS AND INSTALL ITEM 17 SOCKET HEAD CAP SCREWS.
MARK GUIDE PIN ALIGNMENT LOCATIONS FOR FUTURE USE.
- QTY REQD: 1.

QTY PER ASSY	-3	-2	-1	PART NUMBER	PART DESCRIPTION	MANUFACTURER or MAT'L SPEC	ITEM NO.
1				14775	MAIN SUPPORT FRAME WELDMENT		24
1				13234	TRUSS SPACE FRAME ASSEMBLY		23
4				91078A238	HEX NUT 3/4-10 X 27/64" H, GRADE 2 Zn PLT	McMASTER-CARR	22
2				90126A036	WASHER 13/16" I.D. 1-15/32" O.D. .108" THICK Zn PLT	McMASTER-CARR	21
2				91251A301	SOCKET HEAD CAP SCREW 3/4-16 X 4" LONG BLACK OXIDE	McMASTER-CARR	20
4				90128A724	SOCKET HEAD CAP SCREW 1/2-13 X 3" LONG Zn PLT	McMASTER-CARR	19
6				91251A048	SOCKET HEAD CAP SCREW 3/4-16 X 3" LONG BLACK OXIDE	McMASTER-CARR	18
8				91251A046	SOCKET HEAD CAP SCREW 3/4-16 X 2 1/2" LONG BLACK OXIDE	McMASTER-CARR	17
2				91251A044	SOCKET HEAD CAP SCREW 3/4-16 X 2" LONG BLACK OXIDE	McMASTER-CARR	16
3				14945	DEROTATOR GUIDE PIN		15
2				14654	DEROTATOR RING ARC PLATE		14
2				14653	DEROTATOR RING SEGMENT		13
4				3014T255	EYEBOLT 3/4-10 X 2" LONG STEEL Zn PLT	McMASTER-CARR	12
2				3001T71	FORGED STEEL GALVANIZED STEEL TRUNBUCKLE	McMASTER-CARR	11
1				16086	REAR BRACE BLOCK TYPE 2 RH		10
1				16085	REAR BRACE BLOCK TYPE 2 LH		9
1				16084	REAR BRACE BLOCK TYPE 1 RH		8
1				16083	REAR BRACE BLOCK TYPE 1 LH		7
2				16057	FLEX PLATE ASSEMBLY TYPE 5		6
2				16056	FLEX PLATE ASSEMBLY TYPE 4		5
2				16055	FLEX PLATE ASSEMBLY TYPE 3		4
2				16054	FLEX PLATE ASSEMBLY TYPE 2		3
1				16058	FLEX PLATE ASSEMBLY TYPE 1 LH		2
1				16059	FLEX PLATE ASSEMBLY TYPE 1 RH		1

DO NOT SCALE DRAWING INTERPRET DIMENSIONS AND TOLERANCES IN ACCORDANCE WITH ASME Y14.5M-94		THIS DRAWING CREATED IN: ACAD <input type="checkbox"/> MECH <input type="checkbox"/> IDEAS <input checked="" type="checkbox"/>		Steward Observatory, University of Arizona 933 N. Cherry Avenue, Tucson, AZ 85721 (520)621-7659	
TOLERANCES UNLESS OTHERWISE SPECIFIED LINEAR ANGULAR .1 - NA .05 - NA .02 - NA DIAMETRICAL SEE SPEC S-002		DESIGNED BY: D. DEAN	DATE: 5/15/05	CATEGORY: MMT	
MATERIAL		DRAWN BY: D. DEAN/R. NAGY	1/6/06	PROJECT: MAESTRO	
FINISH		CHECKED BY: R. NAGY	1/6/06	TITLE: TRUSS SPACE FRAME TO WELDMENT HARDWARE ASSEMBLY	
NEXT ASSY		APPROVED: J. BECHTOLD	1/6/06	PLOT SIZE SCALE: D -	
ASSEMBLY APPLICATION		APPROVED:		DRAWING NUMBER: 16070	REVISION: A
CURRENT TIME/DATE/FILE LOCATION:		DRAWING ARCHIVE LOCATION: http://devinci.as.arizona.edu/cccd/default.html		SHEET 1 OF 4	