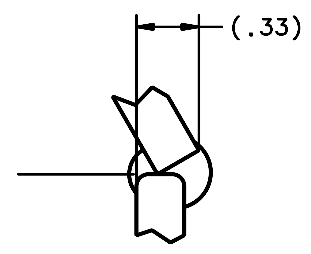
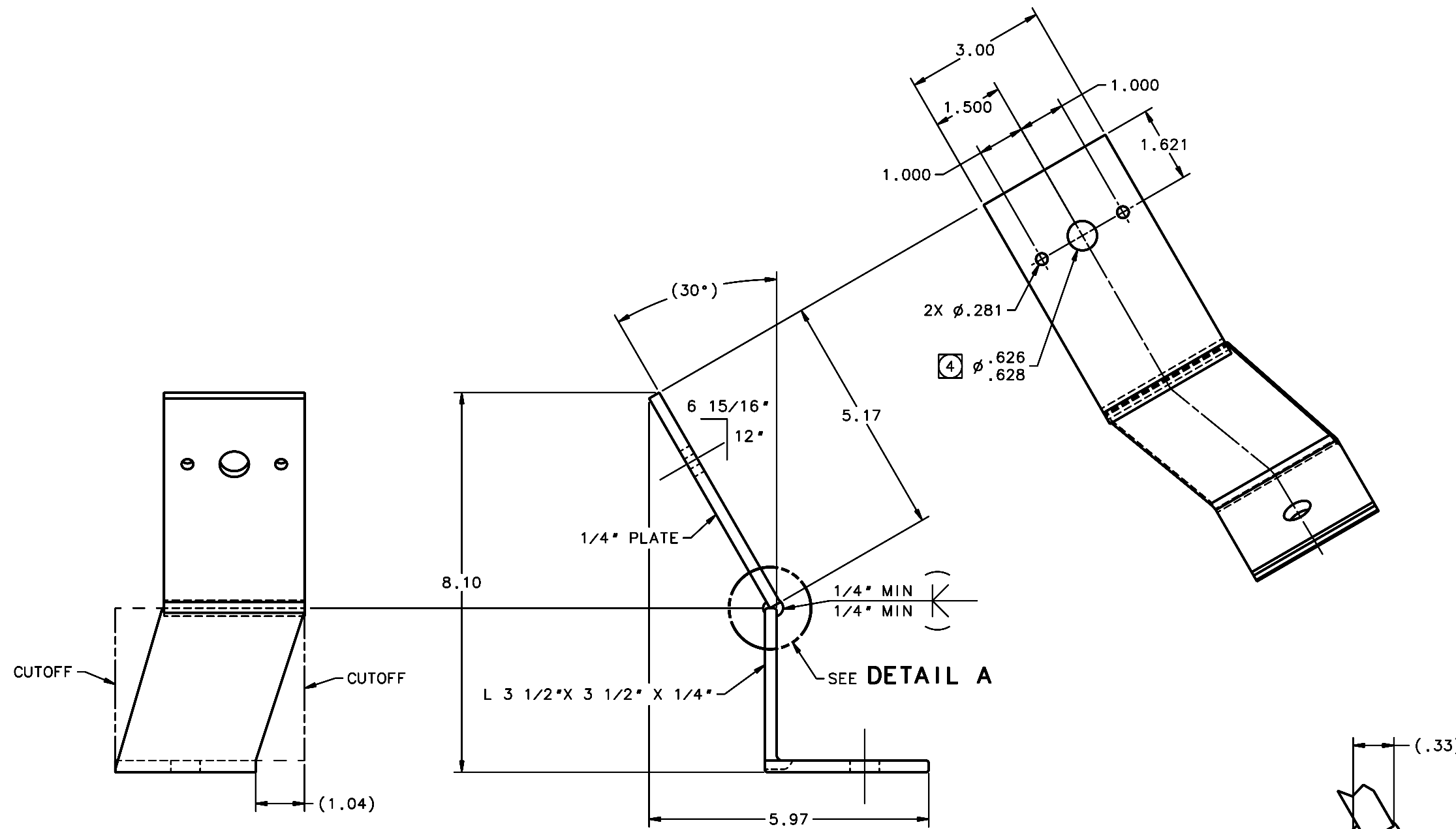
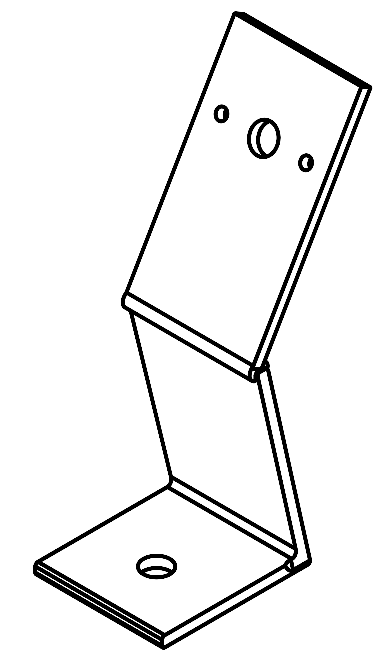


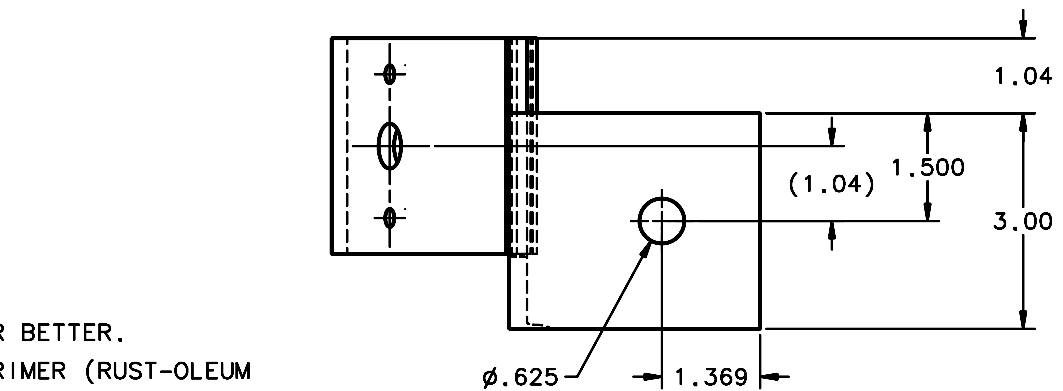
REVISIONS				
LTR	DESCRIPTION	DATE	REVISED BY	APPROVED
A	INITIAL RELEASE	11/17/05	R. NAGY	J. BECHTOLD



**DETAIL A**  
SCALE 2:1



ISO



SCALE 3:4

- NOTES:
- BREAK SHARP EDGES & DEBURR.
  - MACHINED SURFACE FINISH TO BE 125 RMS OR BETTER.
  - PRIME WITH TWO (2) COATS OF RED OXIDE PRIMER (RUST-OLEUM #7669 OR EQUIVALENT) & PAINT WITH TWO (2) COATS OF ALKYD ENAMEL GLOSS WHITE (KELGARD #1700-061 OR EQUIVALENT).
  - DO NOT PAINT NOTED HOLES.
  - QTY REQD: 1.

OPPOSITE HAND OF 16062

DO NOT SCALE DRAWING		THIS DRAWING CREATED IN:		Steward Observatory, University of Arizona 933 N. Cherry Avenue, Tucson, AZ 85721 (520)621-7659			
INTERPRET DIMENSIONS AND TOLERANCES IN ACCORDANCE WITH ASME Y14.5M-94		ACAD	MECH	IDEAS	DESIGNED BY: DAVID DEAN	DATE: 05/15/05	CATEGORY: MMT
TOLERANCES UNLESS OTHERWISE SPECIFIED		<input type="checkbox"/>	<input type="checkbox"/>	<input checked="" type="checkbox"/>	DRAWN BY: DAVID DEAN	09/28/05	PROJECT: MAESTRO
LINEAR					CHECKED BY: R. NAGY	11/14/05	TITLE: TRUSS SPACE FRAME TO WELDMENT APEX FLEX CONNECTION TIE PLATE TYPE 1 LH
ANGULAR					APPROVED: J. BECHTOLD	11/17/05	
.1 = .005					APPROVED:		
.05 = .003					APPROVED:		
.02 = .001					APPROVED:		
DIAMETRICAL SEE SPEC S-002					APPROVED:		
MATERIAL		16058	MMT-MAESTRO		APPROVED:		PLOT SIZE SCALE: D -
ASTM A36 STEEL		NEXT ASSY	USED ON		APPROVED:		DRAWING NUMBER: 16063
FINISH ③		ASSEMBLY APPLICATION		CURRENT TIME/DATE/FILE LOCATION:			REVISION: A
				DRAWING ARCHIVE LOCATION: <a href="http://dovinci.as.arizona.edu/ccad/default.html">http://dovinci.as.arizona.edu/ccad/default.html</a>			SHEET 1 OF 1