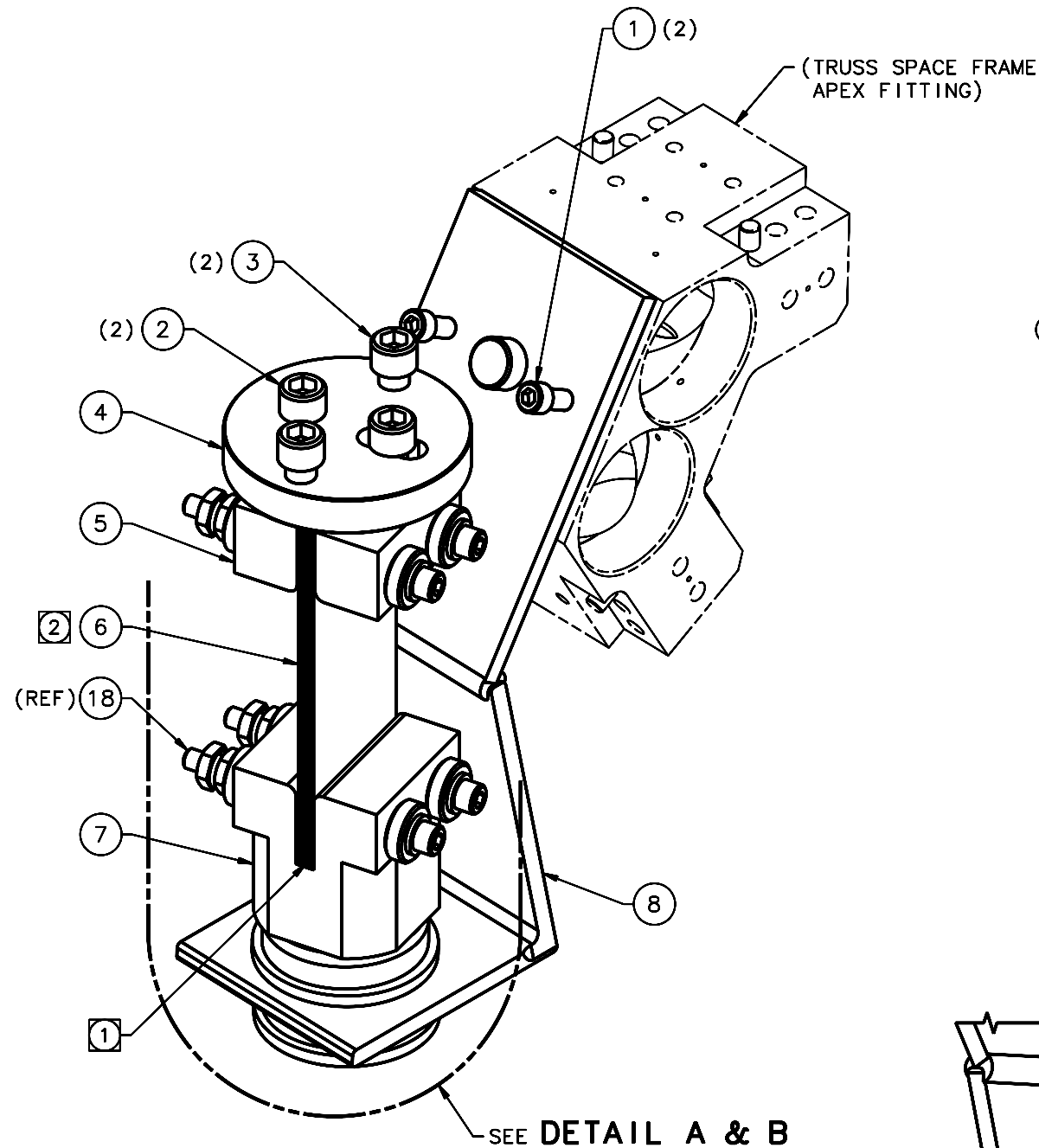
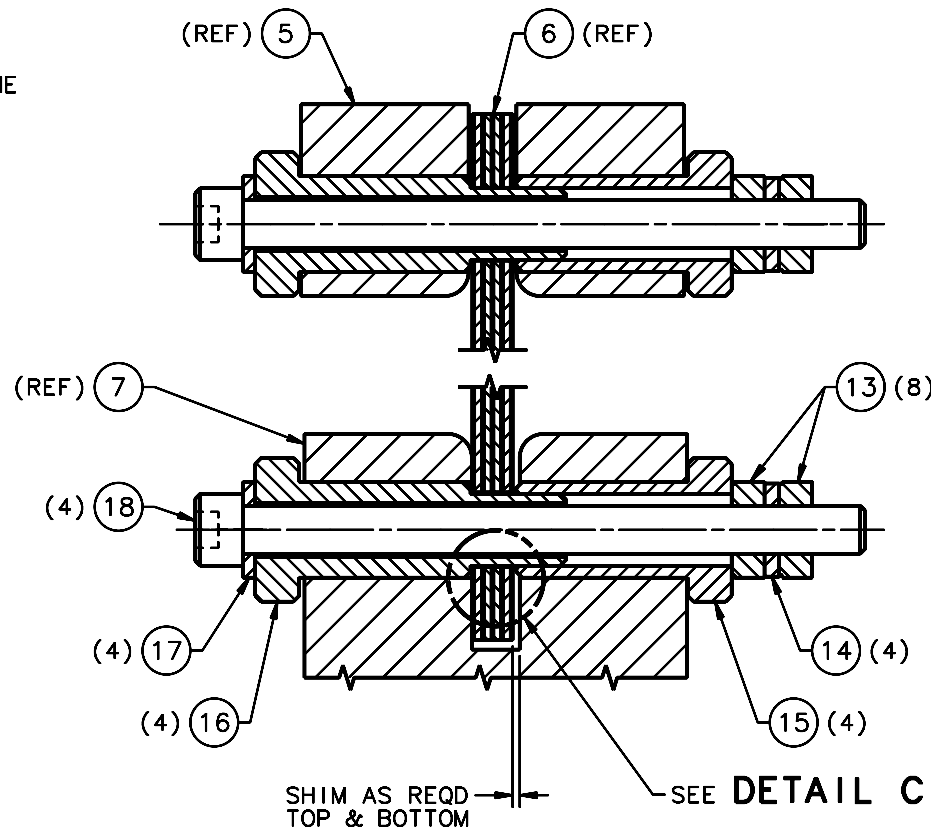


| REVISIONS | | | | |
|-----------|-----------------|---------|------------|-------------|
| LTR | DESCRIPTION | DATE | REVISED BY | APPROVED |
| A | INITIAL RELEASE | 12/2/05 | R. NAGY | J. BECHTOLD |



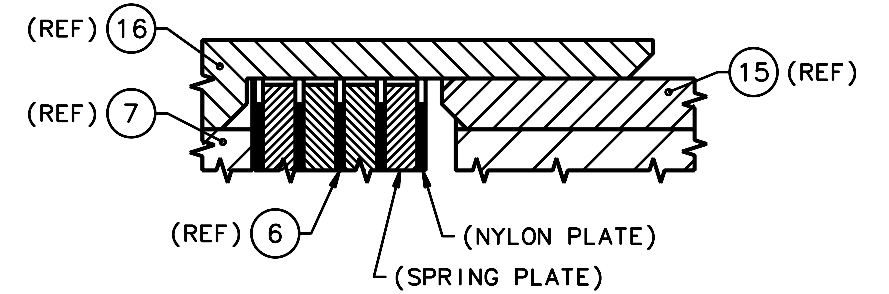
ISO VIEW
SCALE NTS

- NOTES:
- ITEM 6 SPRING PLATE "ORIENTATION CHAMFERS" (PER DWG NO. 16068) IN BUNDLED ASSEMBLY CAN BE TO ANY CORNER, BUT THEY MUST BE IN SAME POSITION TO EACH OTHER.
 - FACE ITEM 6 SPRING PACK TO OPTICAL TELESCOPE CENTER LINE. SEE DWG NO. 16070 FOR "MAPPING."
 - QTY REQD: 1.

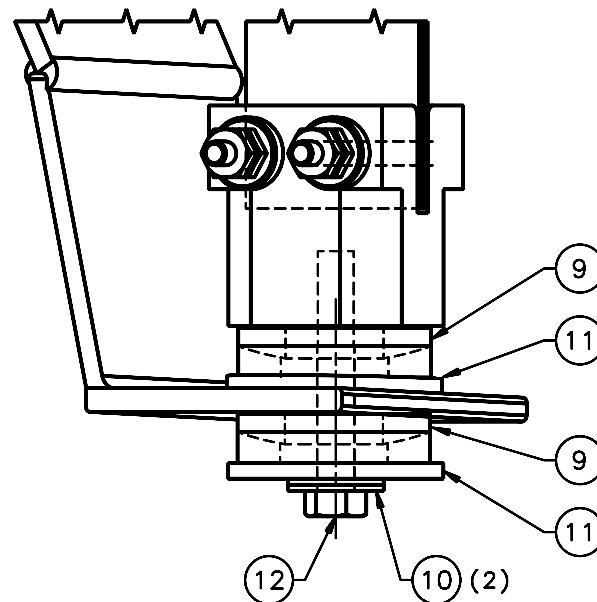


DETAIL B

SCALE 2:1
ITEMS 5, 6, & 7 ATTACHMENT



DETAIL C
SCALE 8 1/2:1



DETAIL A

SCALE 1:1
ROTATED

| QTY PER ASSY | -3 | -2 | -1 | PART NUMBER | PART DESCRIPTION | MANUFACTURER or MAT'L SPEC | ITEM NO. |
|--------------|----|----|----|-------------|------------------|---|------------------|
| | | | | 4 | 92196A555 | SOCKET HEAD CAP SCREW, 1/4-20 UNC x 3-1/4" LG, 18-8 SS | McMASTER-CARR 18 |
| | | | | 4 | 91090A105 | 1/4" FLAT WASHER, 1/2" OD x .042-.052 THK, STEEL, Zn PLT | McMASTER-CARR 17 |
| | | | | 4 | 16066 | FLEX BLOCK PIN MALE | 16 |
| | | | | 4 | 16065 | FLEX BLOCK PIN FEMALE | 15 |
| | | | | 4 | 91102A750 | 1/4" LOCK WASHER, .487 OD x .062 THK, STL, Zn PLT | McMASTER-CARR 14 |
| | | | | 8 | 91078A029 | HEX JAM NUT, 1/4-20 UNC x 5/32" H, GR 2 STL, Zn PLT | McMASTER-CARR 13 |
| | | | | 1 | 91236A634 | HEX HEAD BOLT, 3/8-16 UNC x 2-1/2", STL, Zn PLT | McMASTER-CARR 12 |
| | | | | 2 | 90108A037 | USS 7/8 FLAT WASHER, 2-1/4" OD x .136-.192 THK, STL, Zn PLT | McMASTER-CARR 11 |
| | | | | 2 | 90108A417 | USS 3/8 FLAT WASHER, 1" OD x .064-.104 THK, STL, Zn PLT | McMASTER-CARR 10 |
| | | | | 2 | 91944A032 | SPHERICAL WASHER SET, 1" SCREW x 2" OD x 1/2" THK, 18-8 SS | McMASTER-CARR 9 |
| | | | | 1 | 16063 | APEX FLEX CONNECTION TIE PLATE TYPE 1 LH | 8 |
| | | | | 1 | 13303 | FLEX CONNECTION BLOCK TYPE 1 | 7 |
| | | | | 1 | 16060 | SPRING PACK ASSEMBLY | 6 |
| | | | | 1 | 16069 | APEX TOP DISK BLOCK | 5 |
| | | | | 1 | 16064 | FLEX PLATE BLOCK CAP | 4 |
| | | | | 2 | 91296A357 | SOCKET CAP SCREW, 3/8-24 UNF x 3/4" LG, 18-8 SS | McMASTER-CARR 3 |
| | | | | 2 | 92196A363 | SOCKET CAP SCREW, 3/8-24 UNF x 1-1/2" LG, 18-8 SS | McMASTER-CARR 2 |
| | | | | 2 | 90128A243 | SOCKET CAP SCREW, 1/4-20 UNC x 5/8" LG, STL, Zn PLT | McMASTER-CARR 1 |

LIST OF MATERIALS

| | | | | | |
|--|--|---|-------------------|--|--|
| DO NOT SCALE DRAWING INTERPRET DIMENSIONS AND TOLERANCES IN ACCORDANCE WITH ASME Y14.5M-94 | | THIS DRAWING CREATED IN: ACAD <input type="checkbox"/> MECH <input type="checkbox"/> IDEAS <input checked="" type="checkbox"/> | | Steward Observatory, University of Arizona 933 N. Cherry Avenue, Tucson, AZ 85721 (520)621-7659 | |
| TOLERANCES UNLESS OTHERWISE SPECIFIED LINEAR .1 .XX .XXX ANGULAR NA .XX .XXX DIAMETRICAL SEE SPEC S-002 | | DESIGNED BY: D. DEAN | DATE: 10/17/05 | CATEGORY: MMT | |
| MATERIAL - NEXT ASSY USED ON | | DRAWN BY: D. DEAN/R. NAGY | 11/30/05 | PROJECT: MAESTRTO | |
| FINISH - | | CHECKED BY: R. NAGY | 11/30/05 | TITLE: TRUSS SPACE FRAME TO WELDMENT FLEX PLATE ASSEMBLY TYPE 1 LH | |
| ASSEMBLY APPLICATION | | APPROVED BY: J. BECHTOLD | 12/2/05 | PLOT SIZE SCALE: D - | |
| CURRENT TIME/DATE/FILE LOCATION: | | DRAWING NUMBER: 16058 | | REVISION: A | |
| DRAWING ARCHIVE LOCATION: http://devinci.as.arizona.edu/ccad/default.html | | ASSEMBLY APPLICATION | | SHEET 1 OF 1 | |